

**Historic Park City Improvement Plan
Project Summary**

Immediate Needs ("Low Hanging Fruit")

	Budget	CY12/FY13	CY13/FY14	CY14/FY15	CY15/FY16	CY16/FY17	CY17/FY18
1 Swede/Heber Crosswalks	\$77,790	\$77,790					
2 Swede/Transit Center Crosswalk	\$48,253	\$48,253					
3 Swede/Terigo/Parking Structure Crosswalk	\$45,476	\$45,476					
4 Swede/Egyptian Crosswalk	\$41,735	\$41,735					
C Egyptian Pass Through	\$75,000	\$75,000					
K Historic Wall	\$150,000	\$150,000					
Design Fees for 5 Year Streetscape Package	\$200,000	\$200,000					
Subtotal Streetscape Projects	\$638,253	\$638,253	\$0	\$0	\$0	\$0	\$0

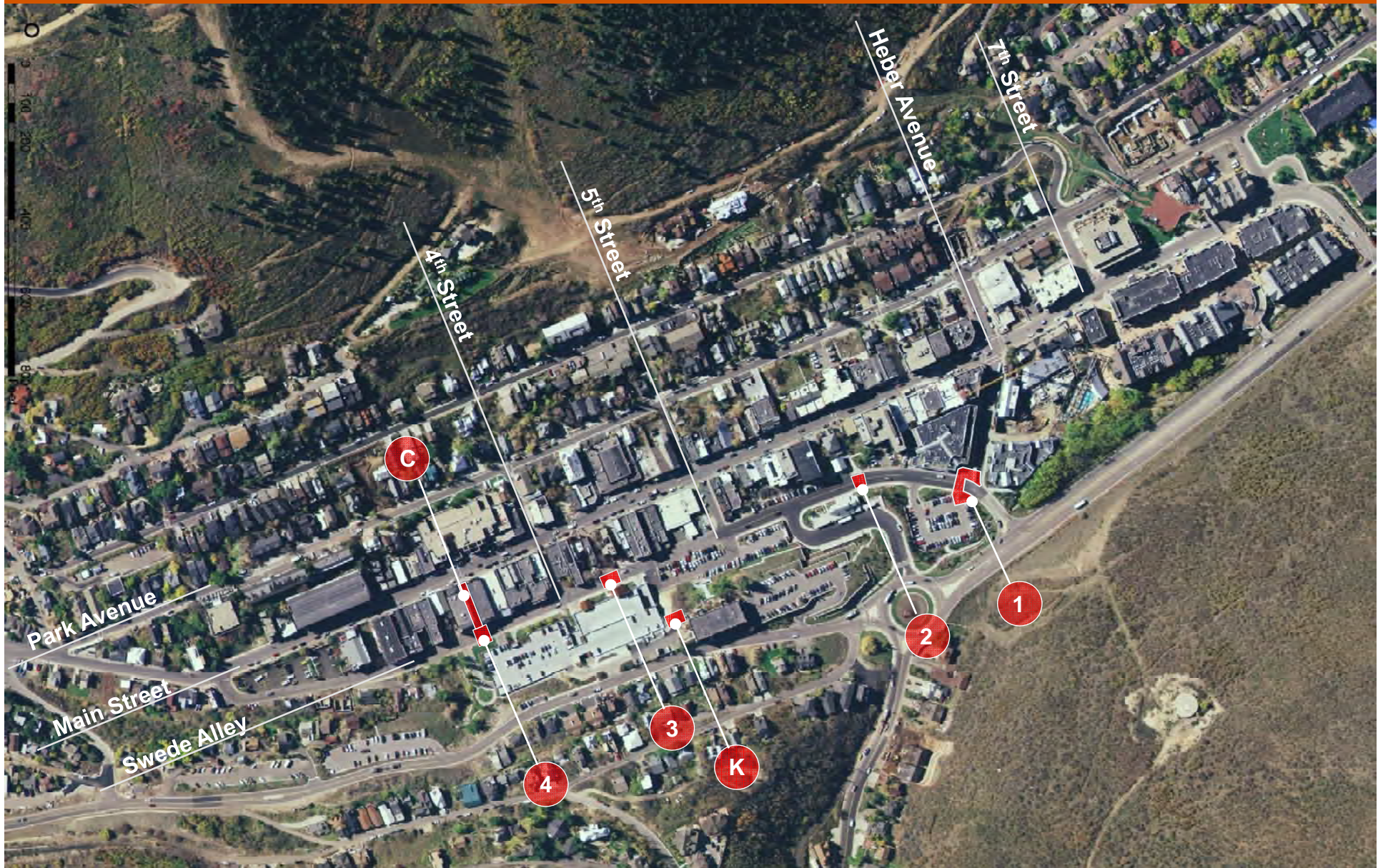
Short Term Needs (1-5 years)

Streetscape Projects		Budget					
1	Main - 4th Street to 5th Street West Side	\$190,510		\$130,000			\$60,510
2	Main - 4th Street to 5th Street East Side	\$181,528	\$181,528				
3	4th Street Conversion	\$237,260			\$237,260		
4	5th Street Conversion	\$20,000			\$20,000		
5	Main - Bear Bench to Heber Ave West Side	\$352,840		\$352,840			
6	Main - Bear Bench to Heber Ave East Side	\$347,530			\$347,530		
7	Main - Town Lift On-Street Parking	\$103,119			\$103,119		
8	7th Street - Main Street to Park Ave	\$349,066	\$349,066				
9	Main - 5th Street to Bear Bench West Side	\$238,873	\$238,873				
10	Main - 5th Street to Bear Bench East Side	\$223,919		\$223,919			
11	Main - 7th Street to Deer Valley Drive East Side	\$426,255				\$426,255	
12	Main - 7th Street to 9th Street West Side	\$234,176			\$234,176		
29	9th Street - Main Street to Park Ave South Side	\$100,000				\$100,000	
30	Main/Egyptian Crosswalk	\$99,210		\$99,210			
5	Swede Sidewalk - Egyptian to Brew Pub Lot	\$66,979		\$66,979			
6	Swede Dumpster - Ciseros	\$25,000		\$25,000			
	Subtotal Streetscape Projects	\$3,196,265		\$769,466	\$897,948	\$942,085	\$526,255
	Inflation Adjustment (3% per year)			\$23,084	\$53,877	\$84,788	\$63,151
	Subtotal Streetscape Projects Adjusted			\$792,550	\$951,825	\$1,026,873	\$589,406
Plaza/Pass Through Projects							
B	Terigo Pass Through	\$229,591	\$229,591				
D	Brew Pub Plaza	\$3,671,579		\$3,671,579			
E	Coalition Trailhead Park	\$772,485				\$772,485	
G	City Hall Plaza	\$495,229		\$495,229			
	Design fees for Brew Pub Plaza	\$180,000	\$180,000				
	Design fees for City Hall Plaza	\$27,000	\$27,000				
	Design fees for Bear Bench/Transit Center Pass Through	\$20,000	\$20,000				
	Subtotal Plaza/Pass Through Projects	\$5,395,884	\$456,591	\$4,166,808	\$0	\$772,485	\$0
	Inflation Adjustment (3% per year)		\$13,698	\$250,008	\$0	\$92,698	\$0
	Subtotal Streetscape Projects Adjusted		\$470,288	\$4,416,816	\$0	\$865,184	\$0
	Total Short Term Needs	\$8,592,149					

Long Term Needs (5-10 years)

Streetscape Projects		Budget					
13	Main - Swede to 4th Street West Side	\$543,996		\$181,151			\$362,845
14	Main - Brew Pub to 4th Street East Side	\$323,599			\$323,599		
15	Park Ave - 7th to 9th East Side	\$94,022					
16	Park Ave - 7th to 8th West Side	\$66,075					
17	Swede - Egyptian to Post Office West Side	\$53,963		\$53,963			
18	Swede - Egyptian to Liquor Store East Side	\$148,262					
19	Swede - Bear Bench to Heber West Side	\$51,298					
20	Main - Heber to 7th Street East Side	\$203,375					
21	Main - Heber to 7th Street West Side (KAC dependent)	\$156,271					
22	Heber - Swede to Main North Side	\$71,500					
23	Heber - Swede to Main South Side	\$41,085					
24	Park Ave - Heber to 7th Street West Side	\$67,129					
25	Park Ave - Heber to 7th Street East Side (KAC dependent)	\$27,788					
26	Heber - Main to Park Ave South Side	\$40,687					
27	Heber - Main to Park Ave North Side (KAC dependent)	\$11,563					
28	Swede - 5th Street to Bear Bench West Side	\$57,817					
	Subtotal Streetscape Projects	\$1,958,430	\$0	\$235,113	\$323,599	\$0	\$362,845
	Inflation Adjustment (3% per year)		\$0	\$14,107	\$29,124	\$0	\$54,427
	Subtotal Streetscape Projects Adjusted		\$0	\$249,220	\$352,723	\$0	\$417,272
Plaza/ Pass Through Projects							
A	Miners Plaza Renovation	\$528,336					\$528,336
F	Bear Bench/Transit Center Pass Through	\$411,672		\$411,672			
H	Schreurs Centennial Plaza Renovation	\$265,000					
I	Poison Creek Park	\$95,000					
J	China Bridge Restrooms	\$50,000				\$50,000	
	Subtotal Plaza/Pass Through Projects	\$1,350,008	\$0	\$411,672	\$0	\$50,000	\$528,336
	Inflation Adjustment (3% per year)		\$0	\$24,700	\$0	\$6,000	\$79,250
	Subtotal Streetscape Projects Adjusted		\$0	\$436,372	\$0	\$56,000	\$607,587
	Total Long Term Needs	\$3,308,438					
	Proposed Phasing Totals	\$12,538,841	\$638,253	\$1,262,839	\$6,054,233	\$1,379,596	\$1,510,589
							\$1,094,446
							\$11,939,956

CY2012/FY2013 Construction Projects



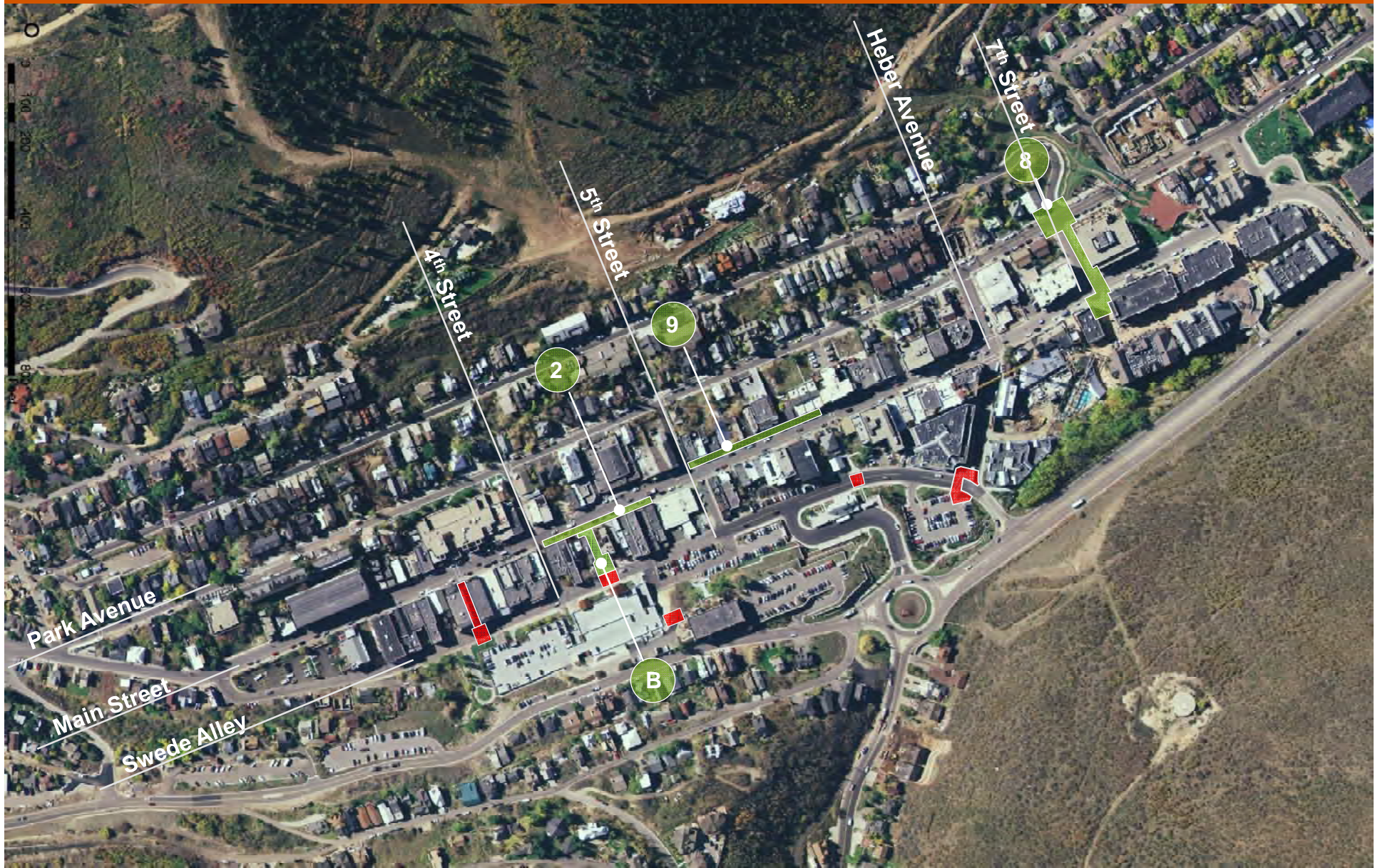
Historic Park City Enhancement Plan
Park City, UT



General Presentation
June 2012



CY2013/FY2014 Construction Projects



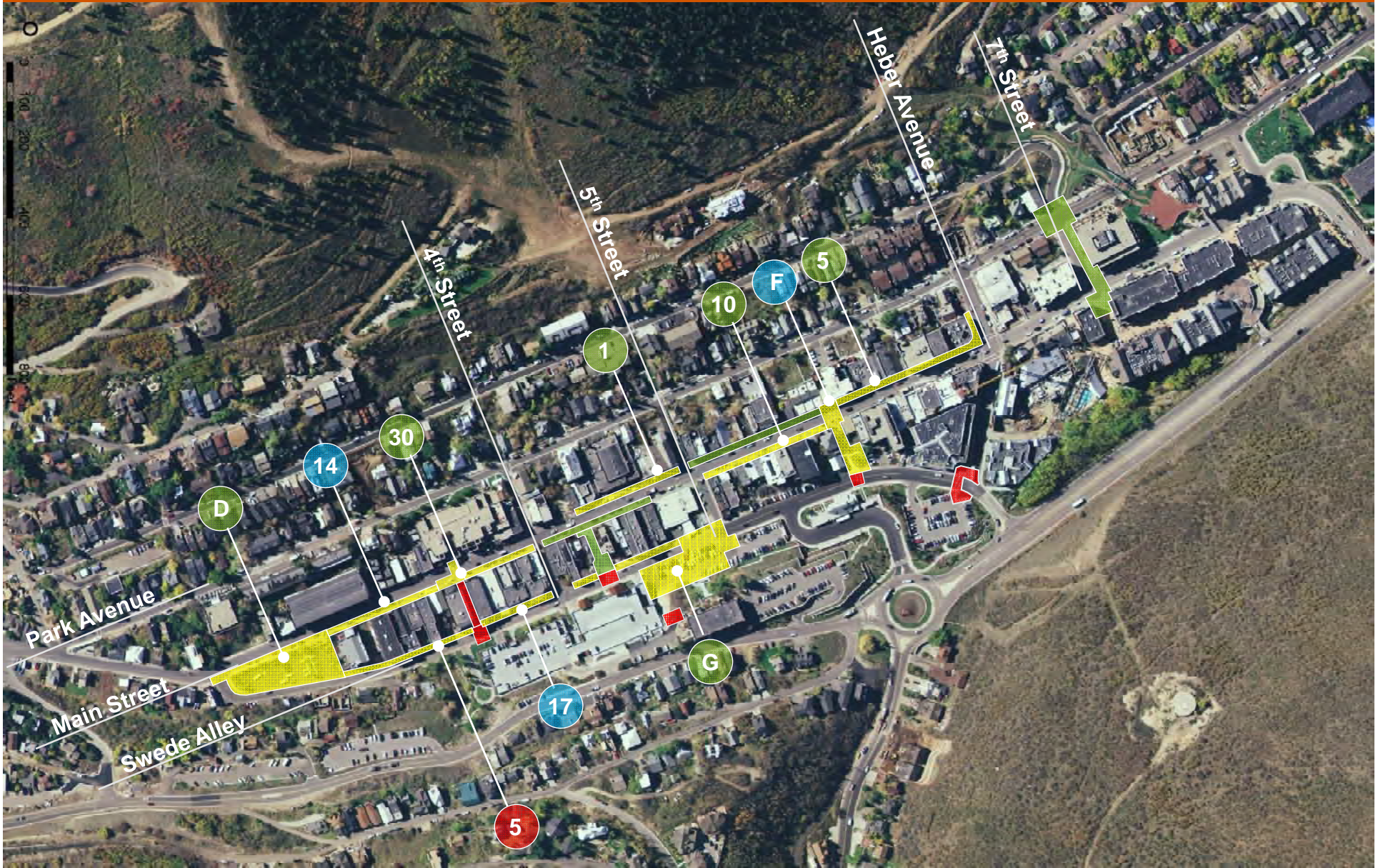
Historic Park City Enhancement Plan
Park City, UT



General Presentation
June 2012



CY2014/FY2015 Construction Projects



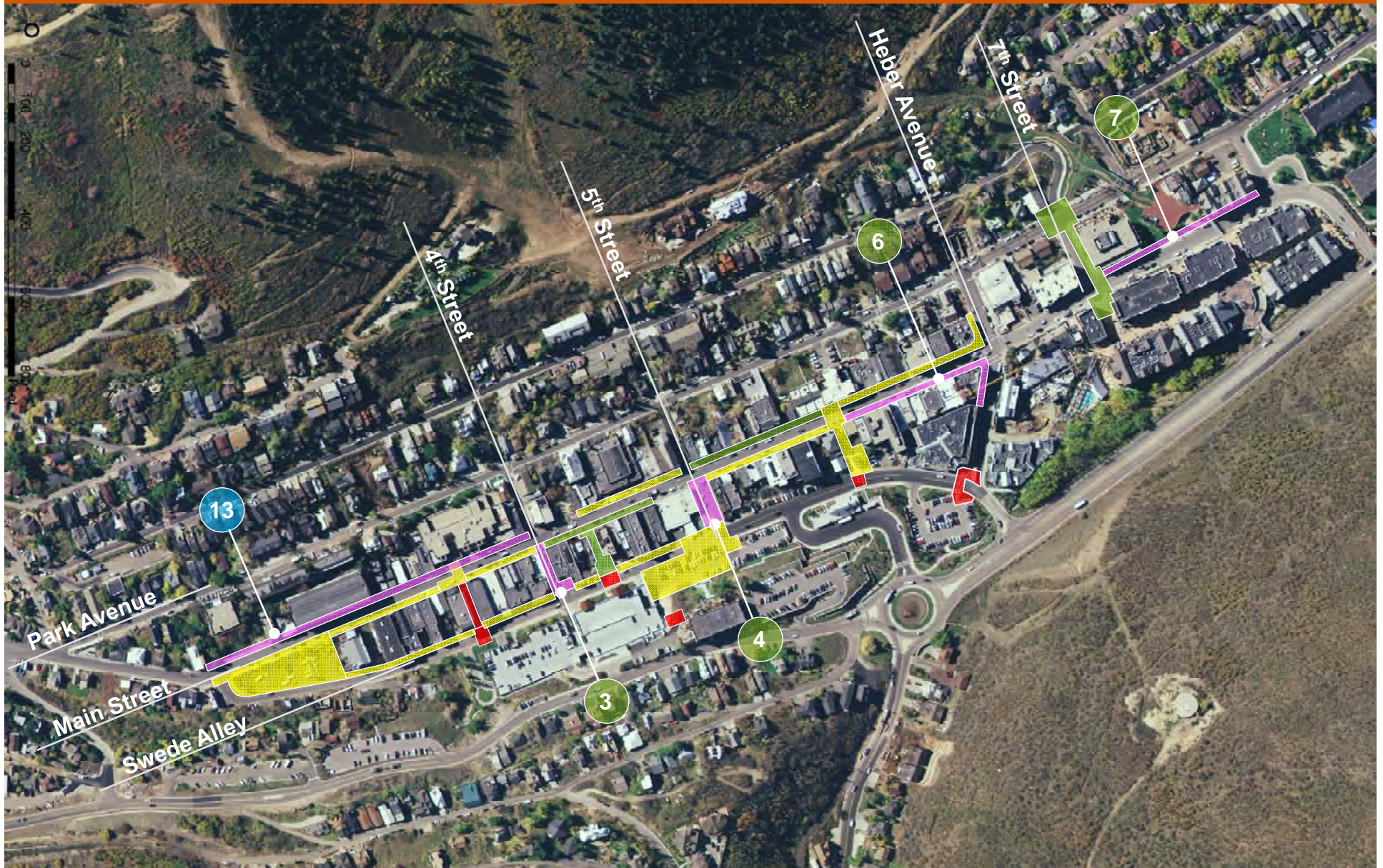
Historic Park City Enhancement Plan
Park City, UT



General Presentation
June 2012



CY2015/FY2016 Construction Projects



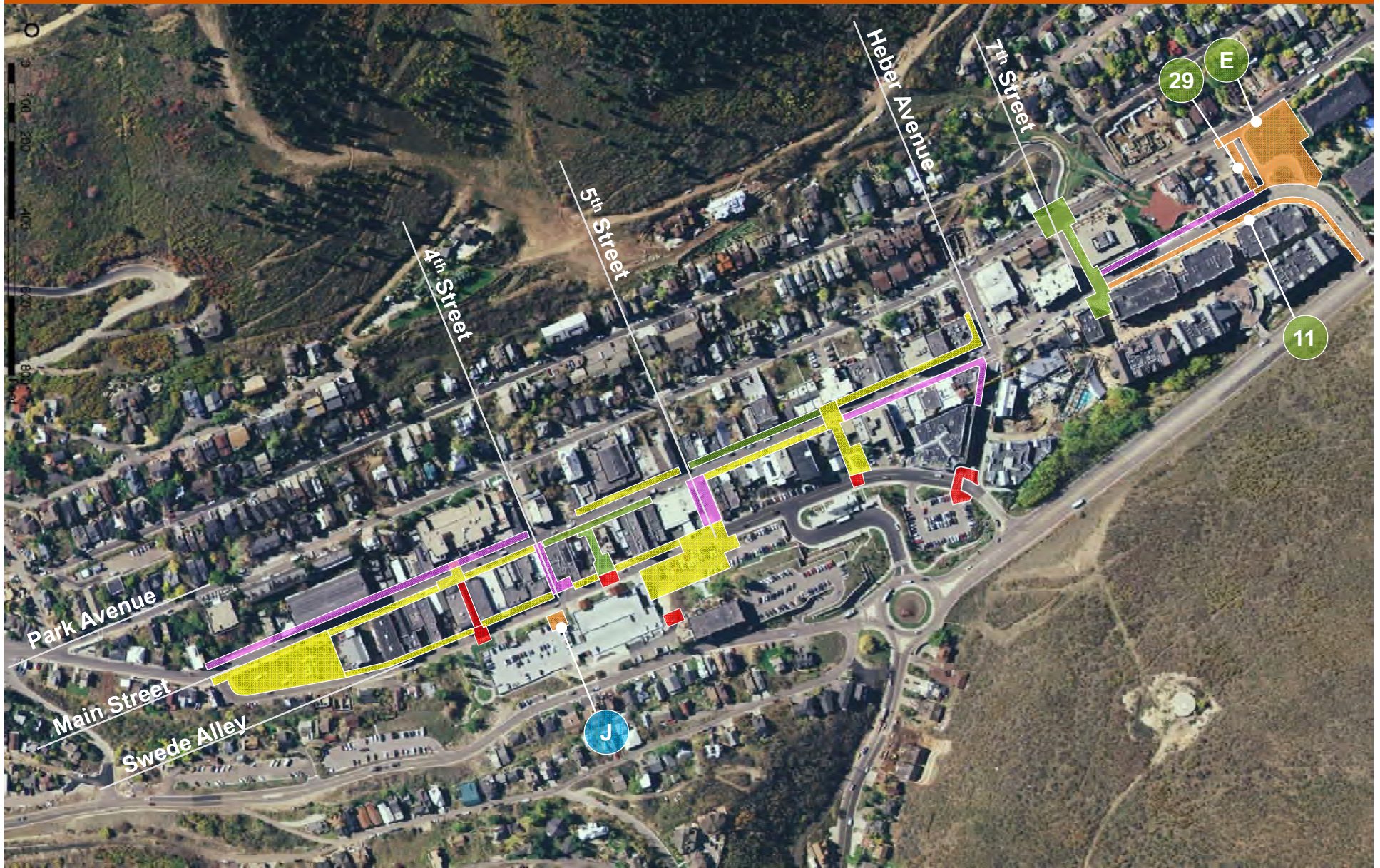
Historic Park City Enhancement Plan
Park City, UT



General Presentation
June 2012



CY2016/FY2017 Construction Projects



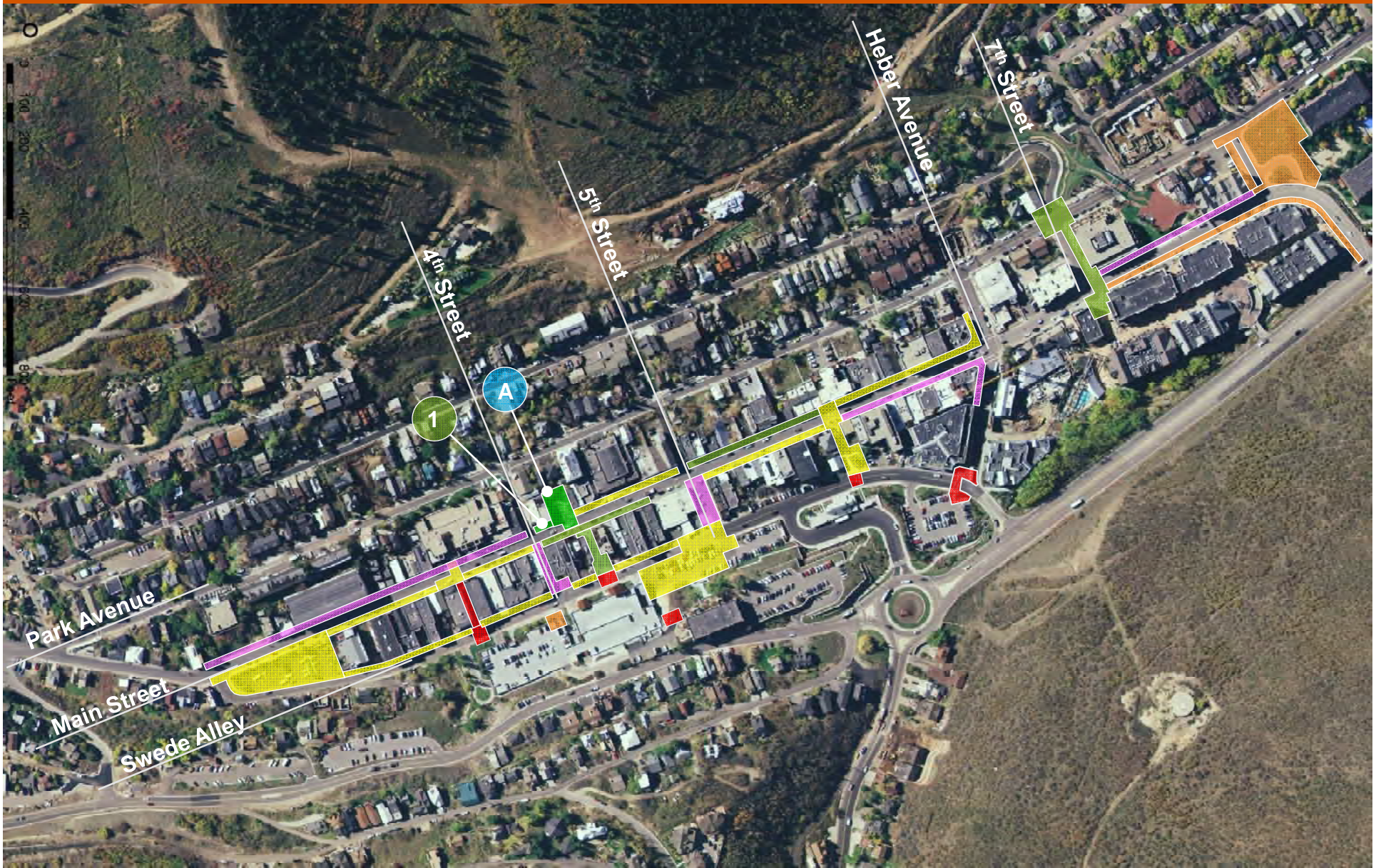
Historic Park City Enhancement Plan
Park City, UT



General Presentation
June 2012



CY2017/FY2018 Construction Projects



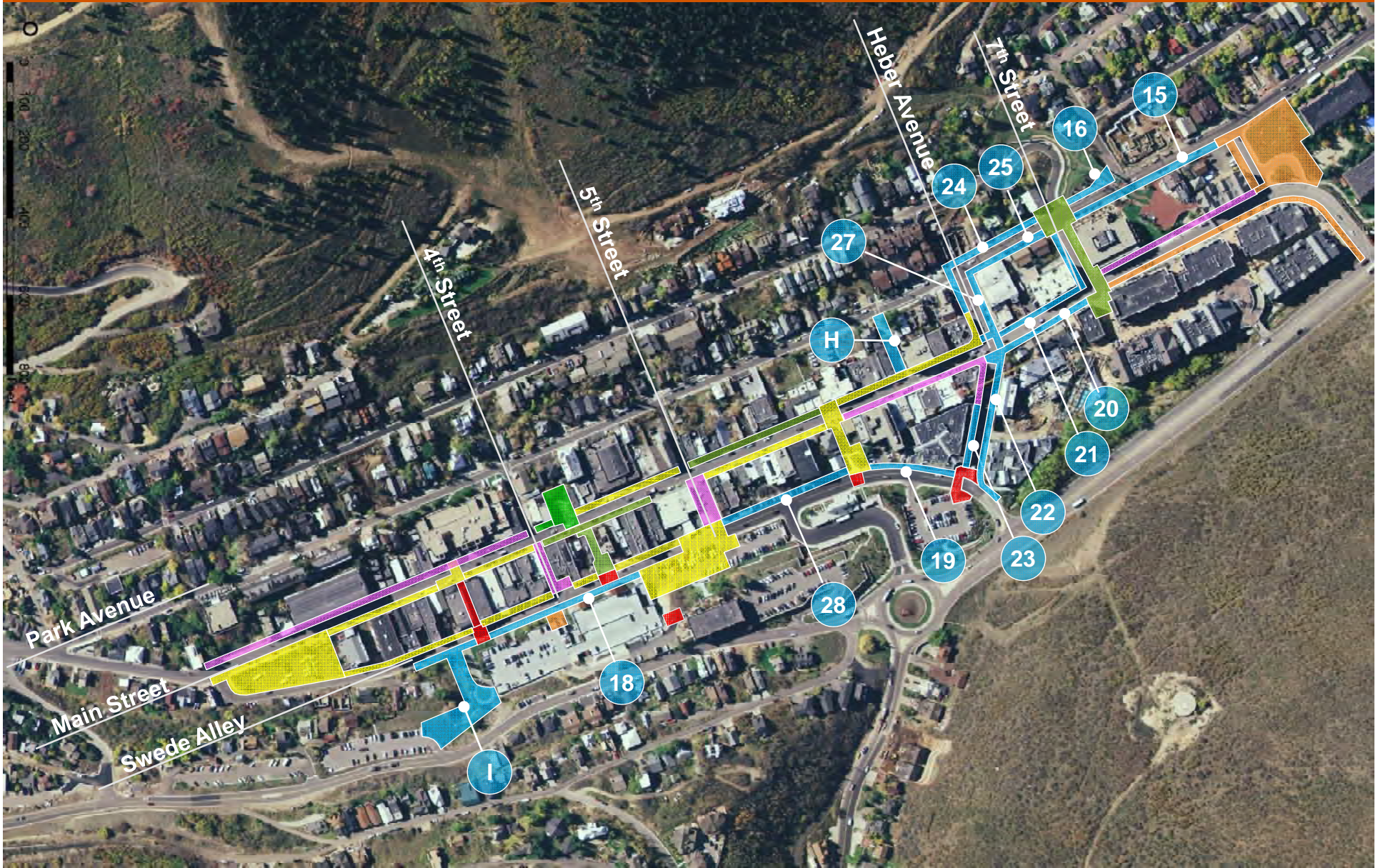
Historic Park City Enhancement Plan
Park City, UT



General Presentation
June 2012



Long Term Projects (6-10 years)



Historic Park City Enhancement Plan
Park City, UT



General Presentation
June 2012



Position Statement: Infrastructure

It is the objective of the HPCA to promote Historic Park City as a fun, friendly and vibrant destination. Smart infrastructure, that supports both car and pedestrian traffic, is essential to fostering an alluring and navigable environment. Our District should encourage visitors to linger, circulate and explore throughout the District. To accomplish this, we need to: 1) reduce physical impediments such as difficult sidewalk navigation; and 2) create attractions/draws along the street (from top to bottom) such as parks and art that encourage exploration. We are confident that easy access, a friendly atmosphere and prolonged exposure to our businesses will increase sales and diversify revenues.

Definitions: We are using a broad definition of infrastructure which includes: parks, public art/attractions, sidewalks, streets, signage, lighting, snow management and public transit. In summary, any physical component within the District that is mandated/managed by the City.

Recommendations: In July 2011, the HPCA and City collaborated and prepared recommendations for public space improvements and pedestrian enhancements for the Historic Park City area. Based on discussion and input from the HPCA Infrastructure Subcommittee, HPCA Board and PCMC Staff, the specific improvement recommendations of this study focus on three primary categories – infrastructure (utilities), uses and attractions (activities/plazas/pocket parks) and pedestrian enhancements (streetscape). This focus is intended to create a visionary, yet achievable plan for the next five to ten years and allowed the process to prepare specific design concepts and cost estimates.

Through continual surveying of members the following is the list of project types by priority.

1. Public Plazas,
2. Streetscape Improvements (light poles, furniture, and sidewalks), and
3. Sidewalk Improvements.

Actions: The HPCA will strongly advocate for funding of the above mentioned projects within a 5 to 7 year timeframe with an approximate value of \$10 million. Through the coordination and approval of the projects, the HPCA will actively work with PCMC to ensure the improvements continue to meet the goals, as outlined, and that the management of the construction project is coordinated to the maximum benefit and minimum impact of the businesses.

Exhibit D

Downtown Projects Email from HPCA to Mayor & City Council

Date: May 15, 2012

Mayor and City Councilors-

The membership of the HPCA is looking forward to your scheduled discussion of Capital Improvement Projects at your meeting this Thursday. The HPCA would like to emphasize the efforts made over the last two years from our organizations to receive public input and prioritize improvements. As recent as a survey conducted in March, our membership continues to set the construction of public spaces as the top priority, especially the Brew Pub Plaza. We ask that you consider the overall economic impacts that visitor attractions, such as the plaza, can produce for the City.

With regards to the Brew Pub Parking Lot, the HPCA requests the City Council look at the improvements with what will best benefit the economics of Main Street and the investments made by private property owners over the years.

Historic Park City continues to be the gem of Park City that is used to market the area to visitors and tourists. The addition of visitor attractions will strengthen the draw to the area. Historic Park City provides a substantial amount of tax revenues for Park City and improvements that attract more visitors to the district will increase future revenues to the City.

We'd like to thank you in advance for your thoughtful consideration of the issue and hope to have you support the full list of improvements for the area.

-Alison Butz, Maren Mullin, Stephanie Johnston and Rick Anderson

Alison Butz

Historic Park City Alliance

www.historicparkcityutah.com

