

To enhance the pedestrian experience and encourage residents and visitors to linger, circulate and explore throughout the Historic Park City District.



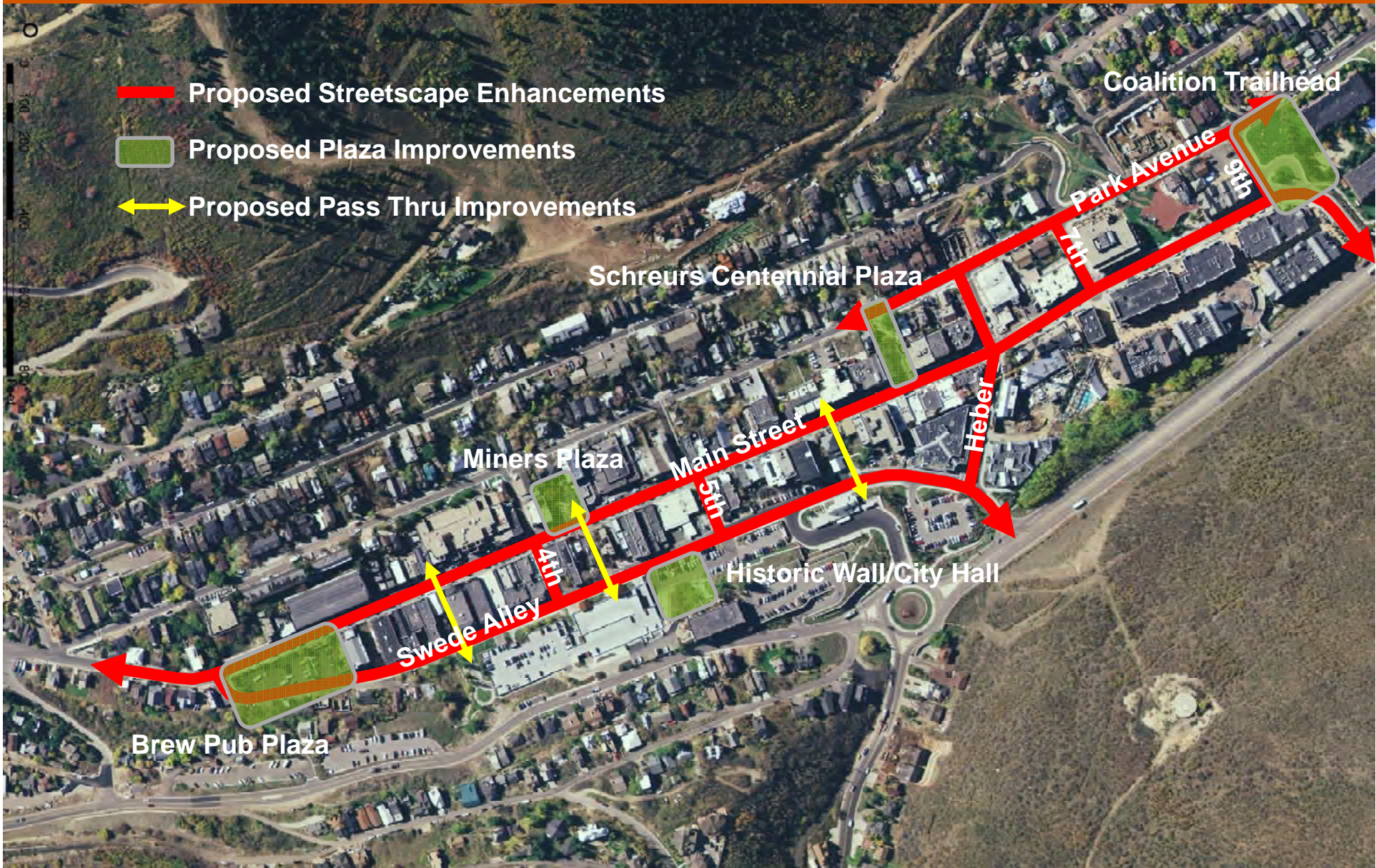
Historic Park City Enhancement Plan
Park City, UT



General Presentation
May 2012



Study Area / Scope of Work



Historic Park City Enhancement Plan
Park City, UT



General Presentation
May 2012



Place Audit...our guiding principles

Why are people emotionally attached and attracted to Park City?

- Natural beauty/setting
- Extensive offering of year-round activities
- Small town charm
- Fun-loving attitude
- Historic qualities
- Sense of community
- Authenticity



Historic Park City Enhancement Plan
Park City, UT



General Presentation
May 2012



Place Audit



Why People Love Where They Live and Why It Matters: A National Perspective



Historic Park City Enhancement Plan
Park City, UT



General Presentation
May 2012



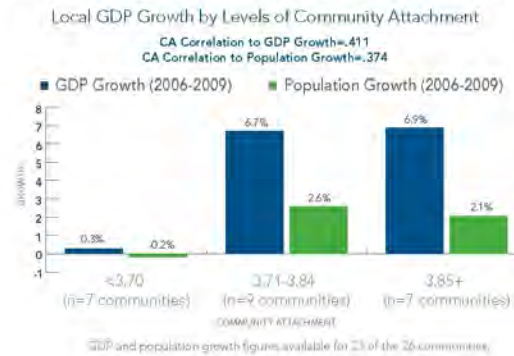
COMMUNITY ATTACHMENT: AN EMOTIONAL CONNECTION

Community attachment is an emotional connection to a place that transcends satisfaction, loyalty, and even passion. A community's most attached residents have strong pride in it, a positive outlook on the community's future, and a sense that it is the perfect place for them. They are less likely to want to leave than residents without this emotional connection. They feel a bond to their community that is stronger than just being happy about where they live.



Why Attachment Matters

Over the past three years, the Soul of the Community study has found a positive correlation between community attachment and local GDP growth. Across the 26 Knight communities, those whose residents were more attached saw more local GDP growth. This is a key metric in assessing community success because local GDP growth not only measures a community's economic success, but also its ability to grow and meet residents' needs.



Gallup research proving the link between employee engagement in a workplace to business outcomes such as productivity, profitability, and employee retention helps to underscore why emotional attachment matters. Just as actively engaged employees are more productive and committed to the success of their organizations, highly attached residents are more likely to actively contribute to a community's growth.

The Relationship to Community Outcomes

Precisely how community attachment affects community outcomes is at best a scientific guess at this point. However, the data make clear that **highly attached residents are more likely to want to stay in their current communities.** When this is true for college graduates and other productive residents, it increases the number of talented, highly educated workers striving to positively affect economic growth.



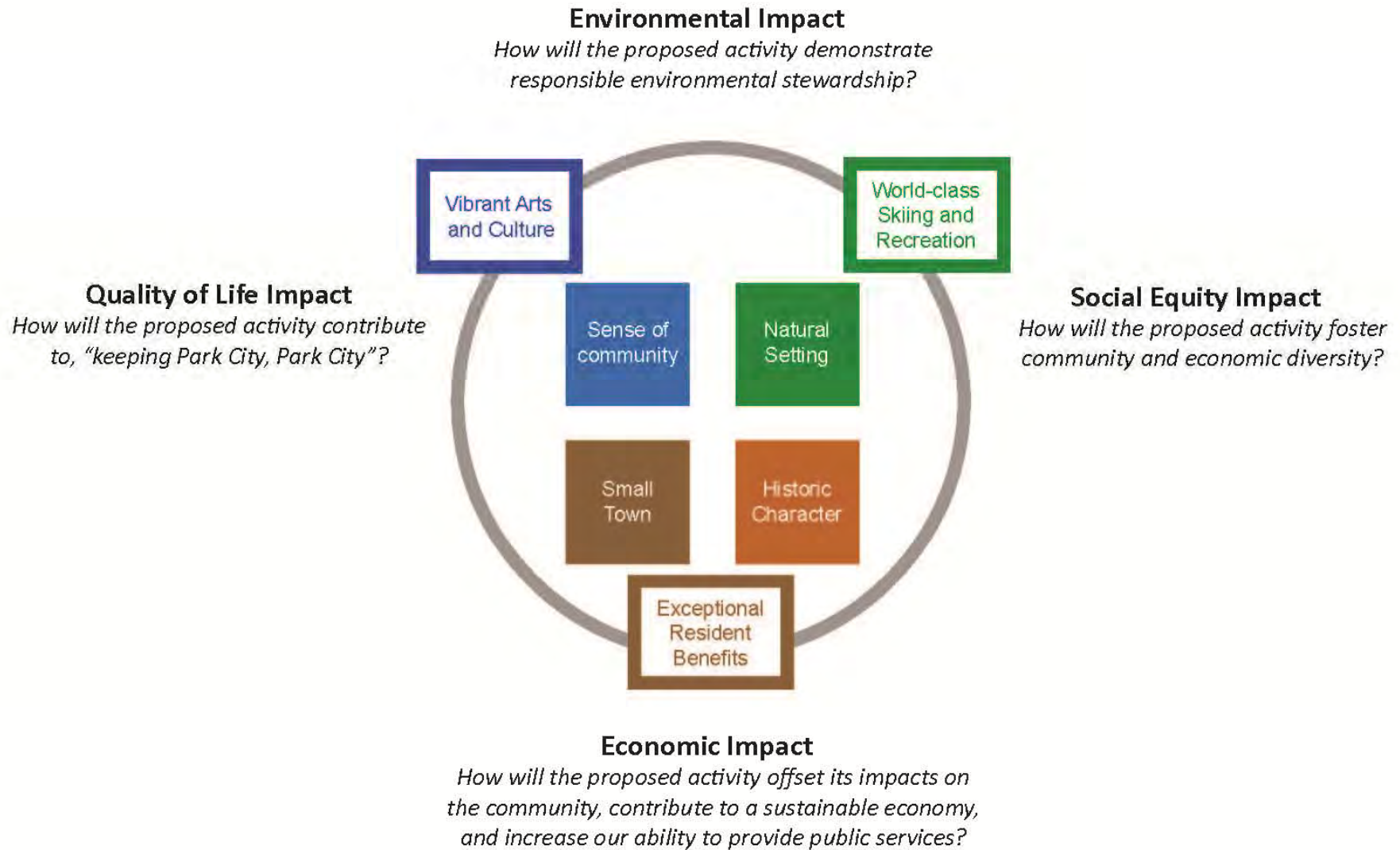
Highly attached residents are also more likely to see their communities as being open to many kinds of people, including talented, young college graduates and families with young children. **Communities that are more open to diversity are better able to compete for talent.**

Attachment is also higher when residents agree that their communities provide the social offerings and aesthetics they enjoy. **When residents enjoy their community's offerings, they are more likely to spend their money on local activities and businesses, directly benefiting the local economy.**

Knight Foundation works in 26 communities where the Knight brothers owned newspapers.



Quadruple Bottom Line Evaluation...our form giving principles



Quality of Life

How will proposal contribute to “keeping Park City, Park City”?

- Encourage socialization for residents and visitors
- Showcase historic and community narratives
- Maintain the “funk” ... authenticity
- Promote physical comfort and safety
- Celebrate the snow sport and year-round recreation lifestyle
- Enhance physical and emotional connectivity to the Historic District
- Enhance and promote arts and culture



Historic Park City Enhancement Plan
Park City, UT



General Presentation
May 2012



Public Art

“Public art is a true symbol of a city’s maturity. It increases a community’s assets and expresses a community’s positive sense of identity and values. It helps green space thrive, enhances roadsides, pedestrian corridors, and community gateways; it demonstrates unquestionable civic and corporate pride in citizenship and affirms an educational environment. A city with public art is a city that thinks and feels.” – Newport News Public Art Foundation

DESTINATION ART



EXPERIENTIAL ART



PLAYFUL ART



ENVIRONMENTAL ART



HISTORIC NARRATIVE



DIGITAL ART



OBJECT ART



INTERACTIVE ART



FUNCTIONAL ART



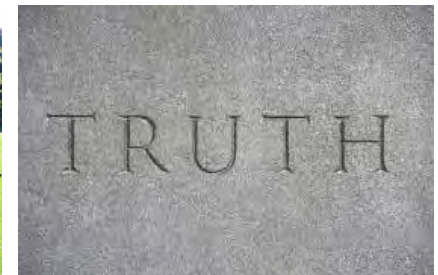
INTEGRATED ART



INSTALLATION ART



INTERPRETIVE ART



Environmental Impact

How will proposal demonstrate responsible environmental stewardship?

- Remove/recycle deteriorating infrastructure requiring ongoing maintenance resources
- Replace deteriorating infrastructure with more durable and recyclable materials providing long-term, life-cycle benefits to maintenance and operation expenses
- Reduce light pollution and energy consumption from inefficient or antiquated fixtures
- Water efficient landscape materials while enhancing air quality
- Goal...offset new energy requirements and current power needs of street lighting with alternative energy sources



Social Equity Impact

How will proposal foster community and economic diversity?

- Create a network of complimentary gathering spaces, large and small to appeal to diverse resident and visitor needs
- Consider all ages, genders and races - intergenerational
- Opportunities for children and families through atmosphere for learning and education
- Improved accessibility
- Promote cultural preservation
- Enhance connections and access to public transit and parking



Economic Impact

How will proposal offset its impacts on the community, contribute to a sustainable economy and increase our ability to provide public services?

- Commitment and investment into physical and social infrastructure
- Investment in quality public facilities to increase tourism through added uses and attractions
- Enhance the atmosphere for economic development including diversity of retail users
- Maintain current parking counts
- Catalyze private investment and redevelopment of underutilized properties



Study Area / Scope of Work – Streetscape Improvements



Streetscape – Main Street Existing Conditions



Main Street looking North at 333 Main/350 Main



Historic Park City Enhancement Plan
Park City, UT



General Presentation
May 2012



Streetscape – Main Street Existing Conditions



Bulbouts



Colonnades



Streetscape – Main Street Existing Conditions



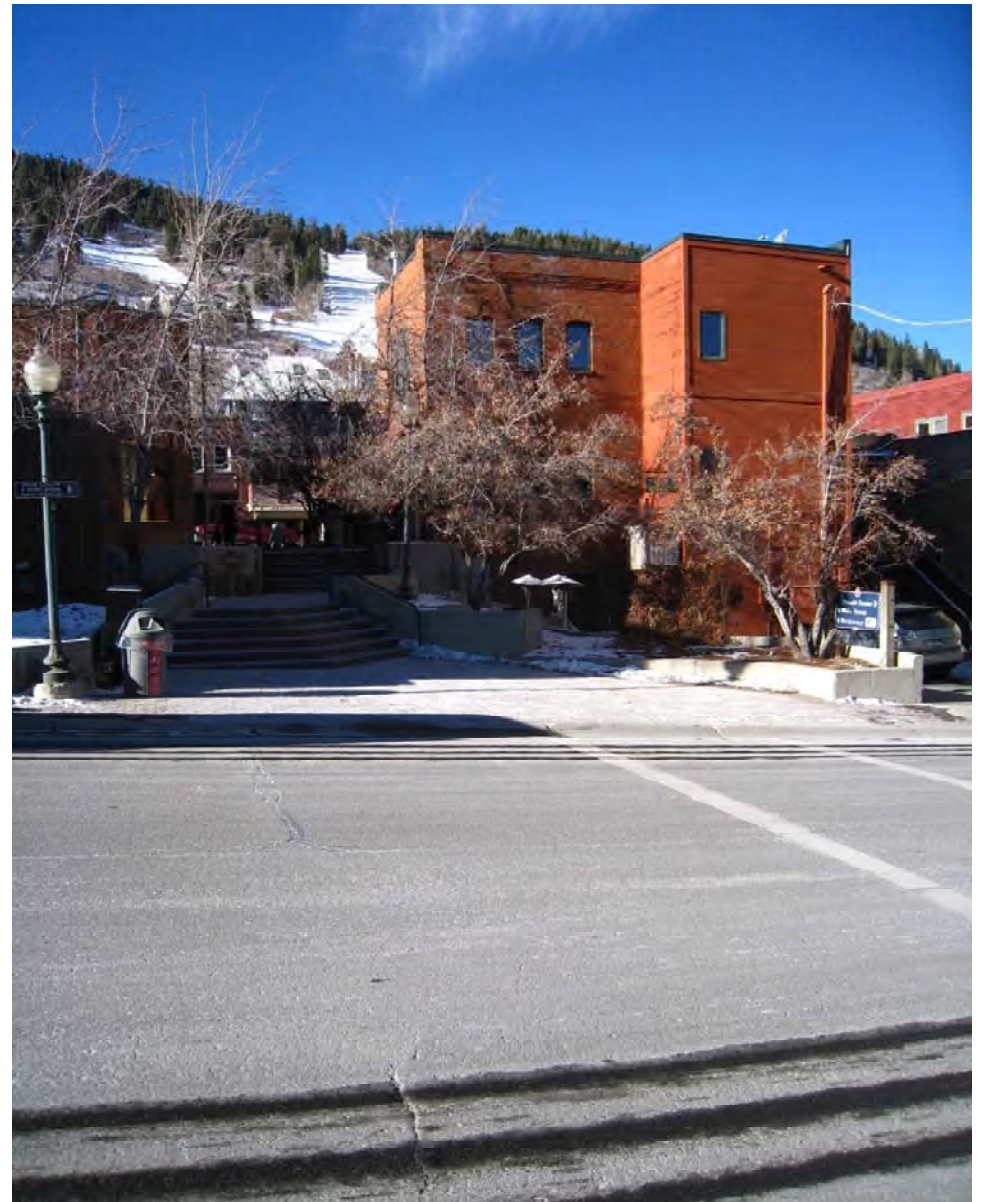
Historic Canopies



Streetscape – Swede Alley Existing Conditions



Historic Canopies



Historic Park City Enhancement Plan
Park City, UT



General Presentation
May 2012



Streetscape – Existing Paving Conditions



Historic Park City Enhancement Plan
Park City, UT



General Presentation
May 2012



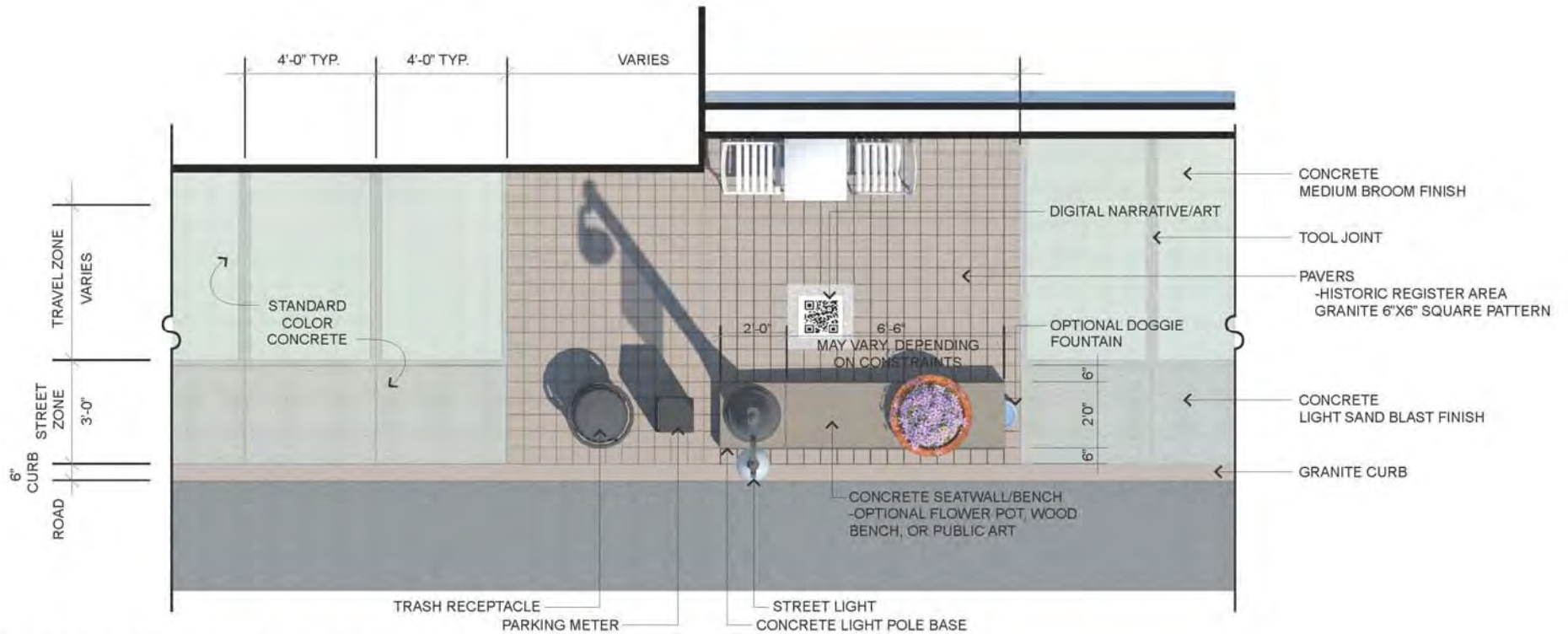
Anatomy of Streetscape...its not just a sidewalk!

Key Components of “Streetscape”

- Hardscape (curbs/paving/steps/ramps/walls)
 - Physical connection to place
 - Organization/pedestrian flow
 - Tactile/texture/materiality and link to local materials
 - Temperature...warm/cool
 - Interpretive/Informational
- Vertical Features (light poles/bollards/columns/canopies/parking meters/signs)
 - Three dimensional definition
 - Mood/safety
 - Color (banners/hanging baskets/signs)
 - Character
- Furnishings (benches/trash receptacles/bike racks/clock towers)
 - Comfort/convenience
 - Continuity/consistency
 - Inspiration/sense of place



Streetscape – Design Framework



PLAN ENLARGEMENT: HISTORIC REGISTER AREA TREATMENT



Historic Park City Enhancement Plan
Park City, UT



General Presentation
May 2012



Streetscape – Design Framework



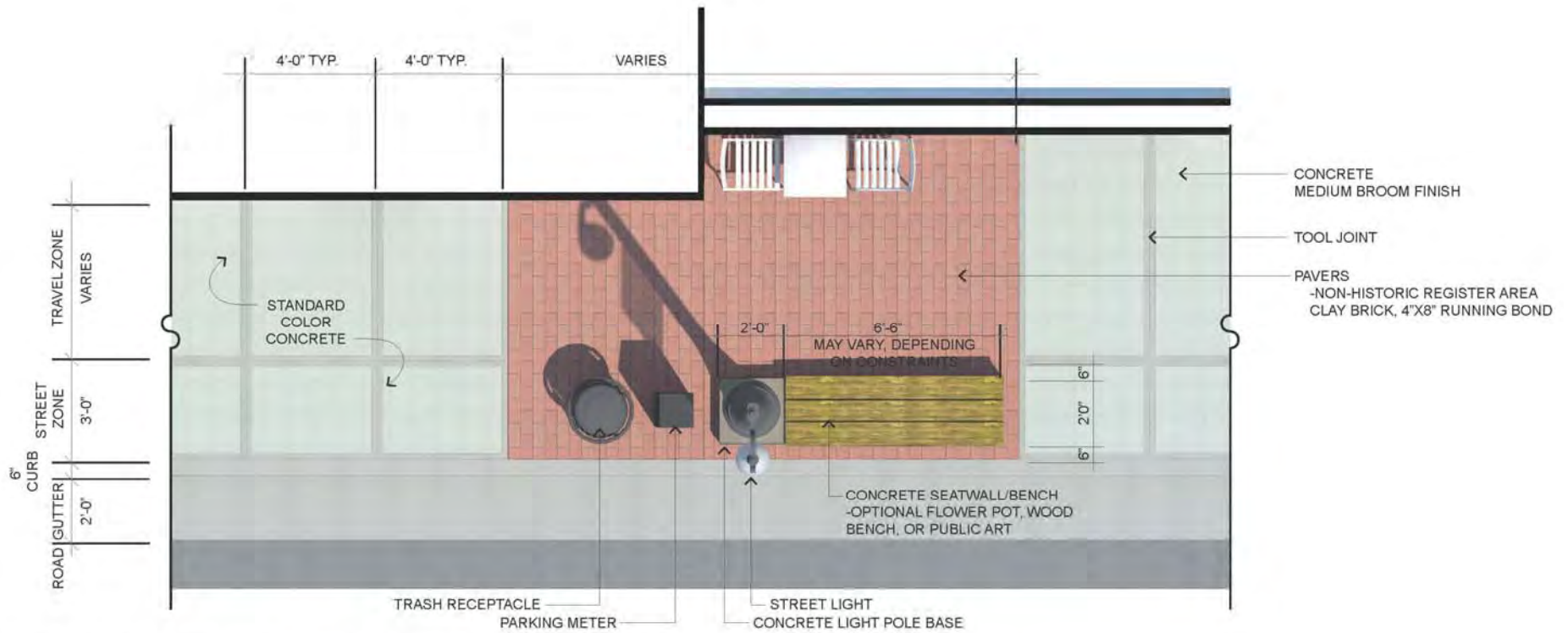
Historic Park City Enhancement Plan
Park City, UT



General Presentation
May 2012



Streetscape – Design Framework



PLAN ENLARGEMENT: NON-HISTORIC REGISTER AREA TREATMENT



Historic Park City Enhancement Plan
Park City, UT



General Presentation
May 2012



Streetscape – Design Framework



Historic Park City Enhancement Plan
Park City, UT



General Presentation
May 2012



Streetscape – Proposed Paving Materials for Historic Register Area



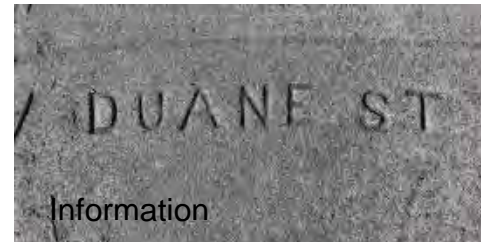
Granite Curb



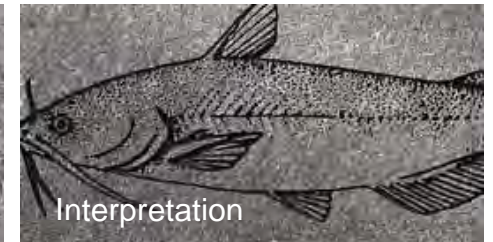
Joint Treatment



Medium Broom Finish



Information

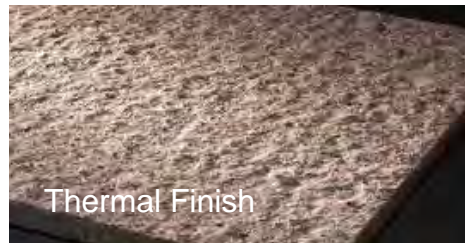


Interpretation

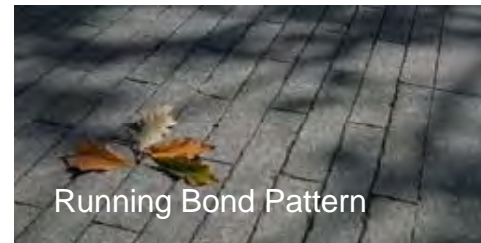
Concrete Sidewalk



Natural Color Square Pattern



Thermal Finish



Running Bond Pattern



Accent

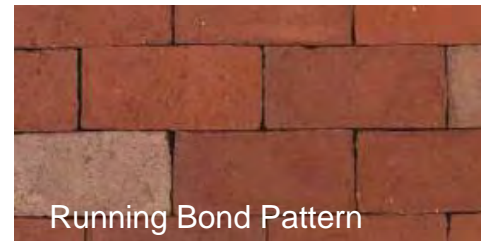
Granite Paving



Primrose Color Basket Weave Pattern



Herringbone Pattern



Running Bond Pattern



Crosswalk Inlays

Brick Paving



Historic Park City Enhancement Plan
Park City, UT



General Presentation
May 2012



Streetscape – Proposed Paving Materials for Non-Historic Register Area



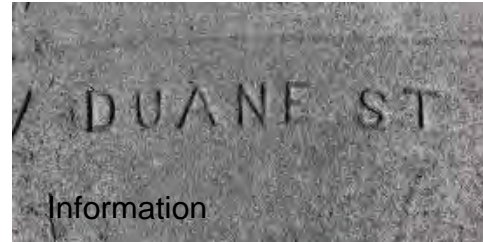
Concrete Curb and Gutter



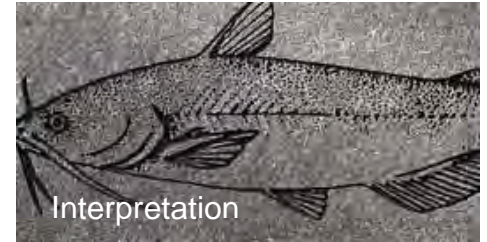
Joint Treatment



Medium Broom Finish



Information



Interpretation

Concrete Sidewalk



Primrose Color
Basket Weave Pattern



Herringbone Pattern



Running Bond Pattern

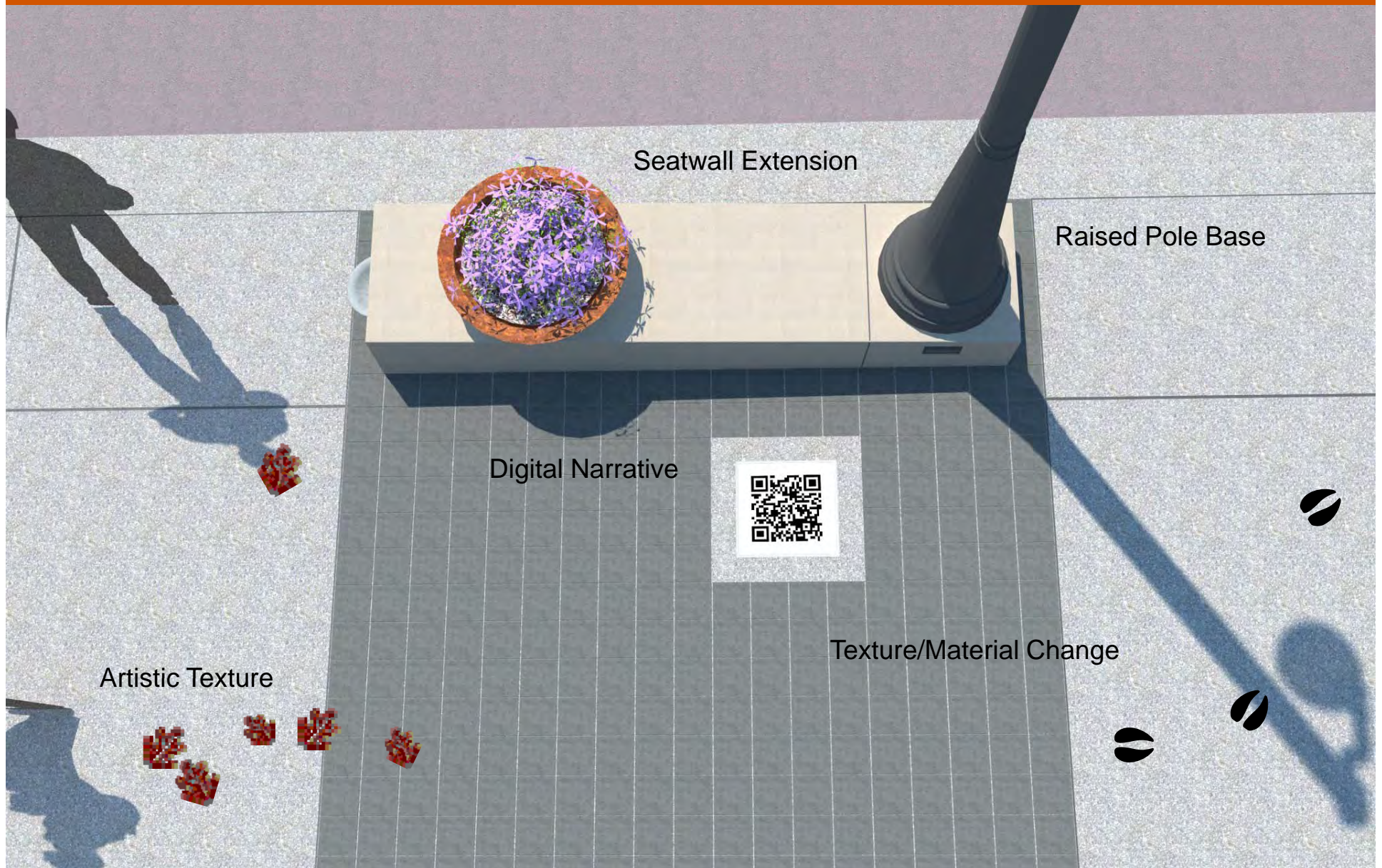


Crosswalk Inlays

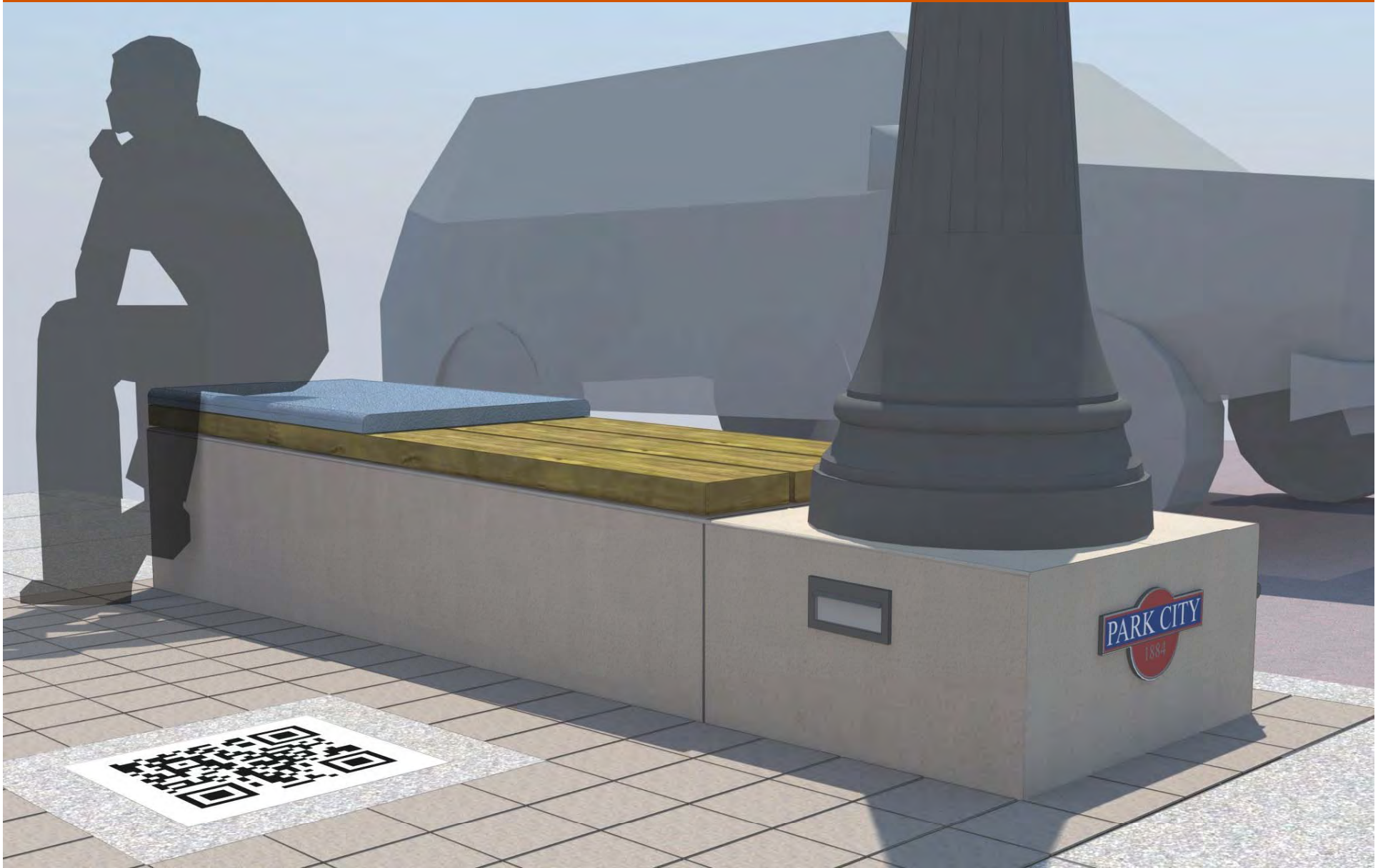
Brick Paving



Streetscape – Hardscape/Vertical Elements



Streetscape – Hardscape/Vertical Elements



Historic Park City Enhancement Plan
Park City, UT



General Presentation
May 2012



Streetscape – Hardscape/Vertical Elements



Historic Park City Enhancement Plan
Park City, UT



General Presentation
May 2012



Streetscape – Street Lights

Existing Street Light



Proposed Replacement Street Light Pole/Arm



Proposed Replacement Street Light Fixture



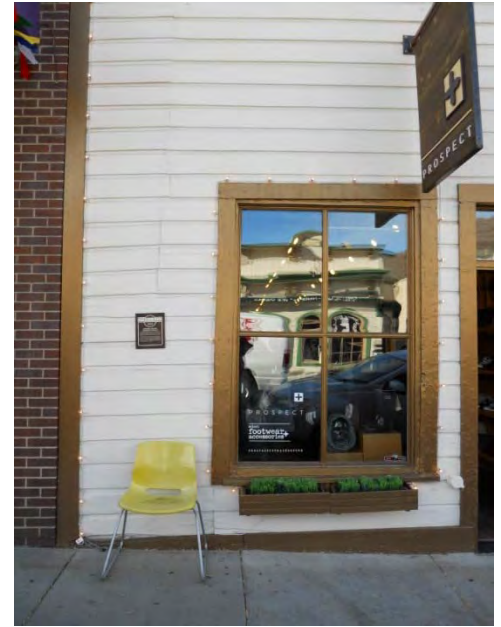
Streetscape - Furnishings



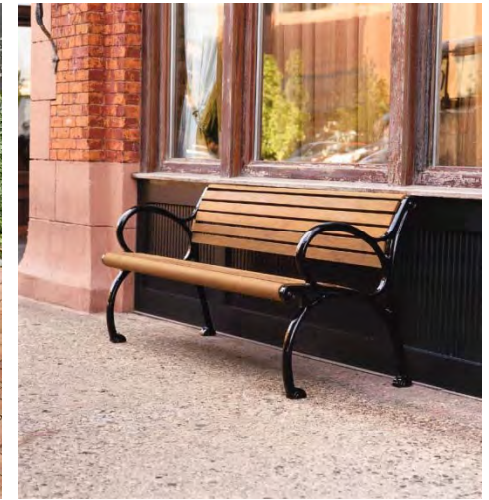
Replace existing benches/trash receptacles above...with new standards shown below



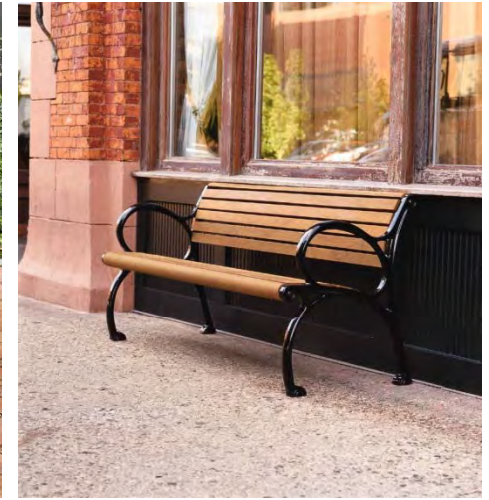
Streetscape - Furnishings



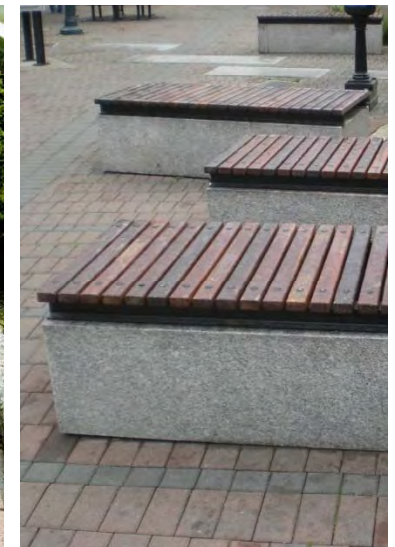
While still allowing individuals the opportunity to add character to the street...



Streetscape/Plaza Furnishings



Enhance the pedestrian experience by expanding the standard streetscape option shown above with additional seating choices in plaza spaces. Choices should range from built in to movable furnishings as well as soft seating and interactive, signature elements.



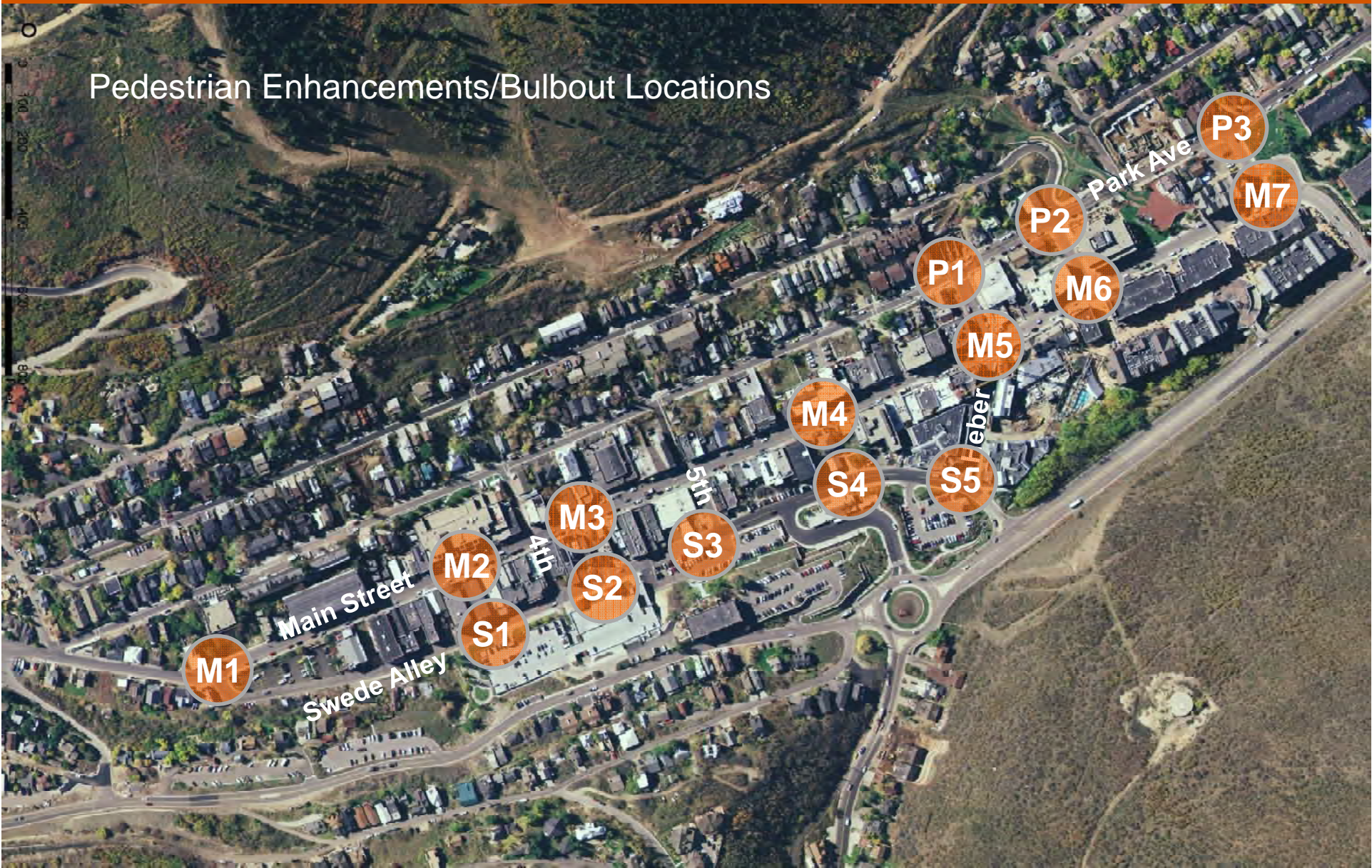
Streetscape – Kiosks...the evolution of information!



Replace existing kiosks with user-friendly digital touch screen technology to enhance the pedestrian experience and connection to information.



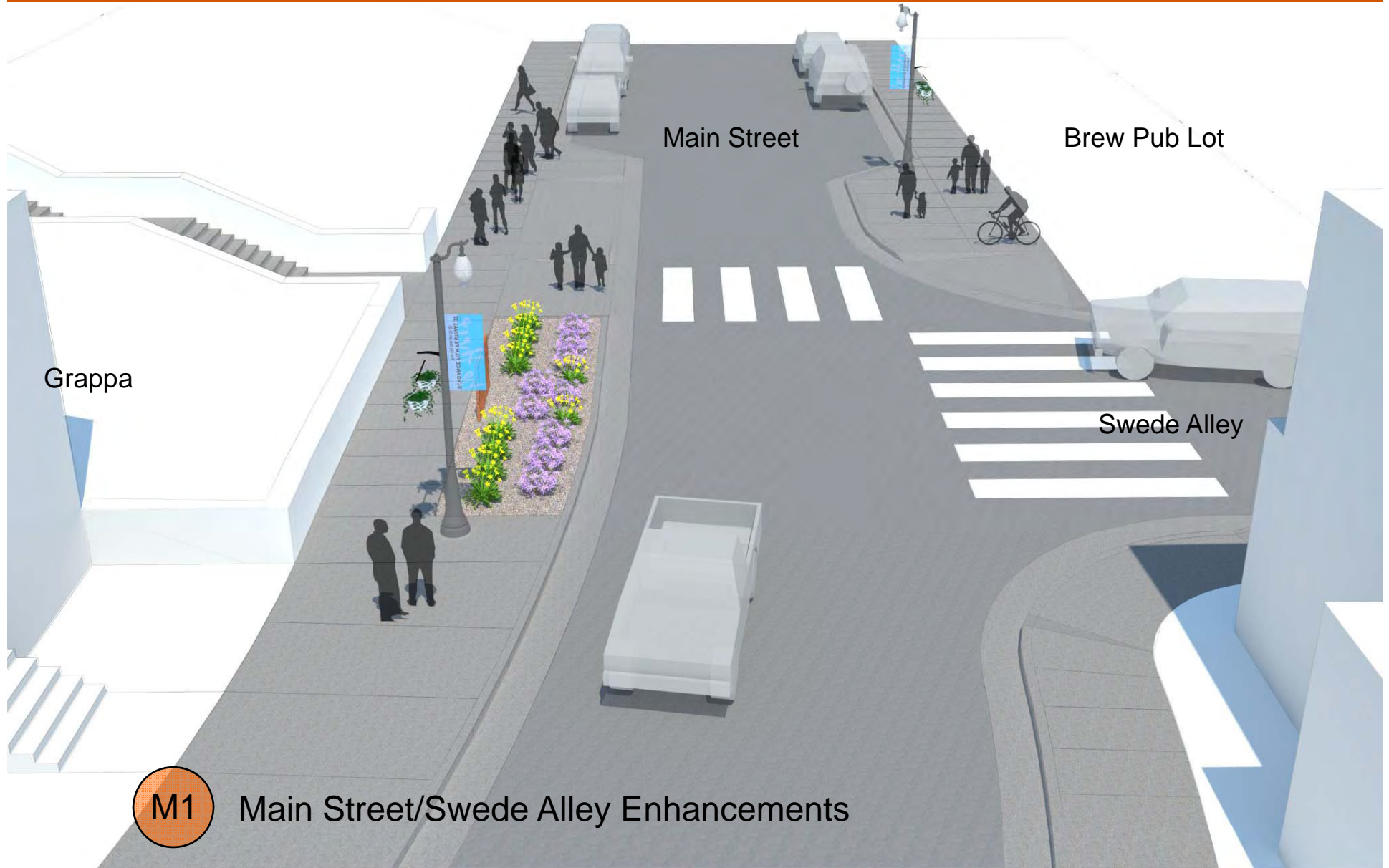
Streetscape



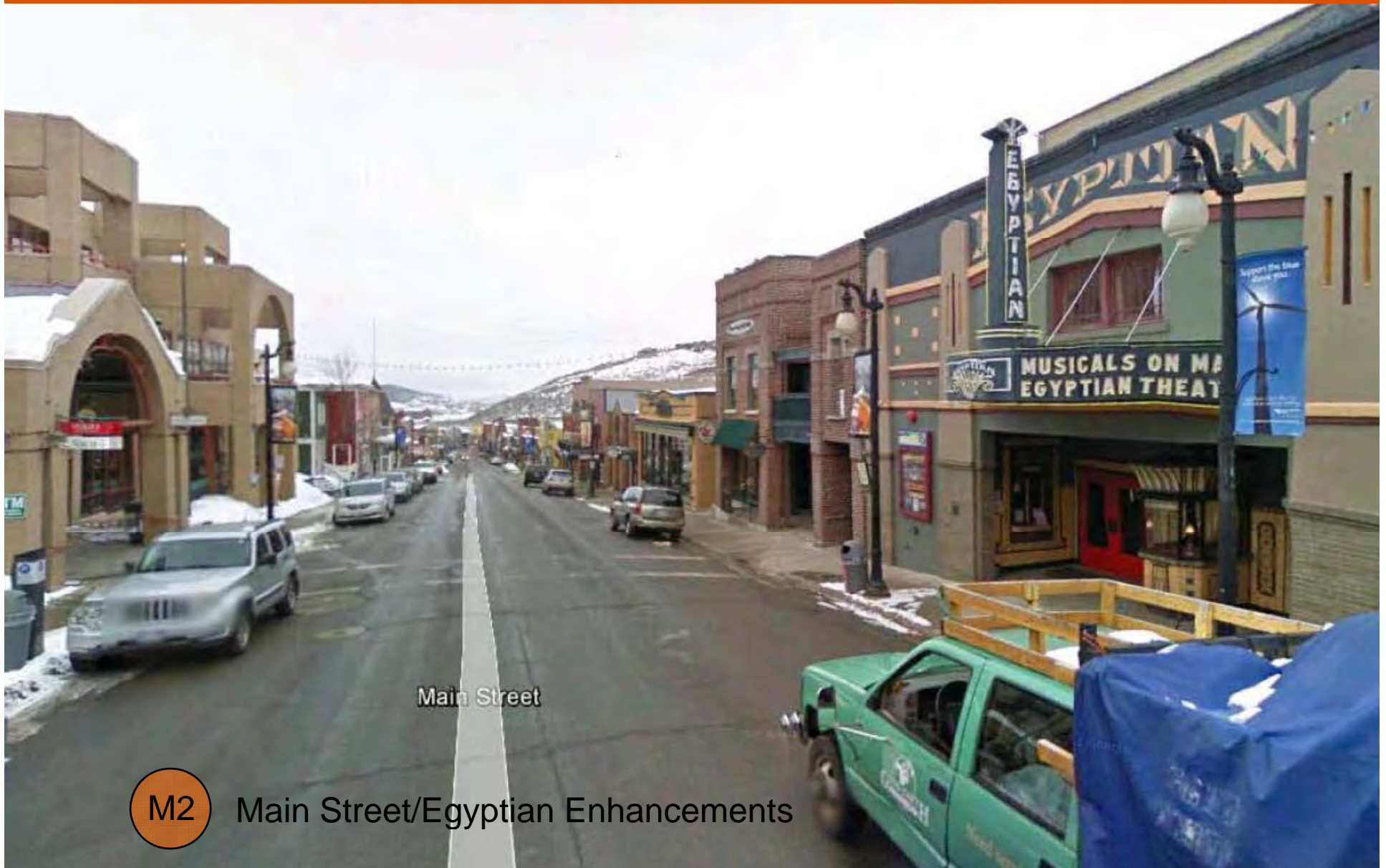
Streetscape – Pedestrian Enhancements



Streetscape – Pedestrian Enhancements



Streetscape – Pedestrian Enhancements



Streetscape – Pedestrian Enhancements



M2 Main Street/Egyptian Enhancements

Streetscape – Pedestrian Enhancements



M3

Miners Plaza Pass Thru Enhancements



Historic Park City Enhancement Plan
Park City, UT



General Presentation
May 2012



Streetscape – Pedestrian Enhancements



M3 Miners Plaza Pass Thru Enhancements



Historic Park City Enhancement Plan
Park City, UT



General Presentation
May 2012



Streetscape – Pedestrian Enhancements



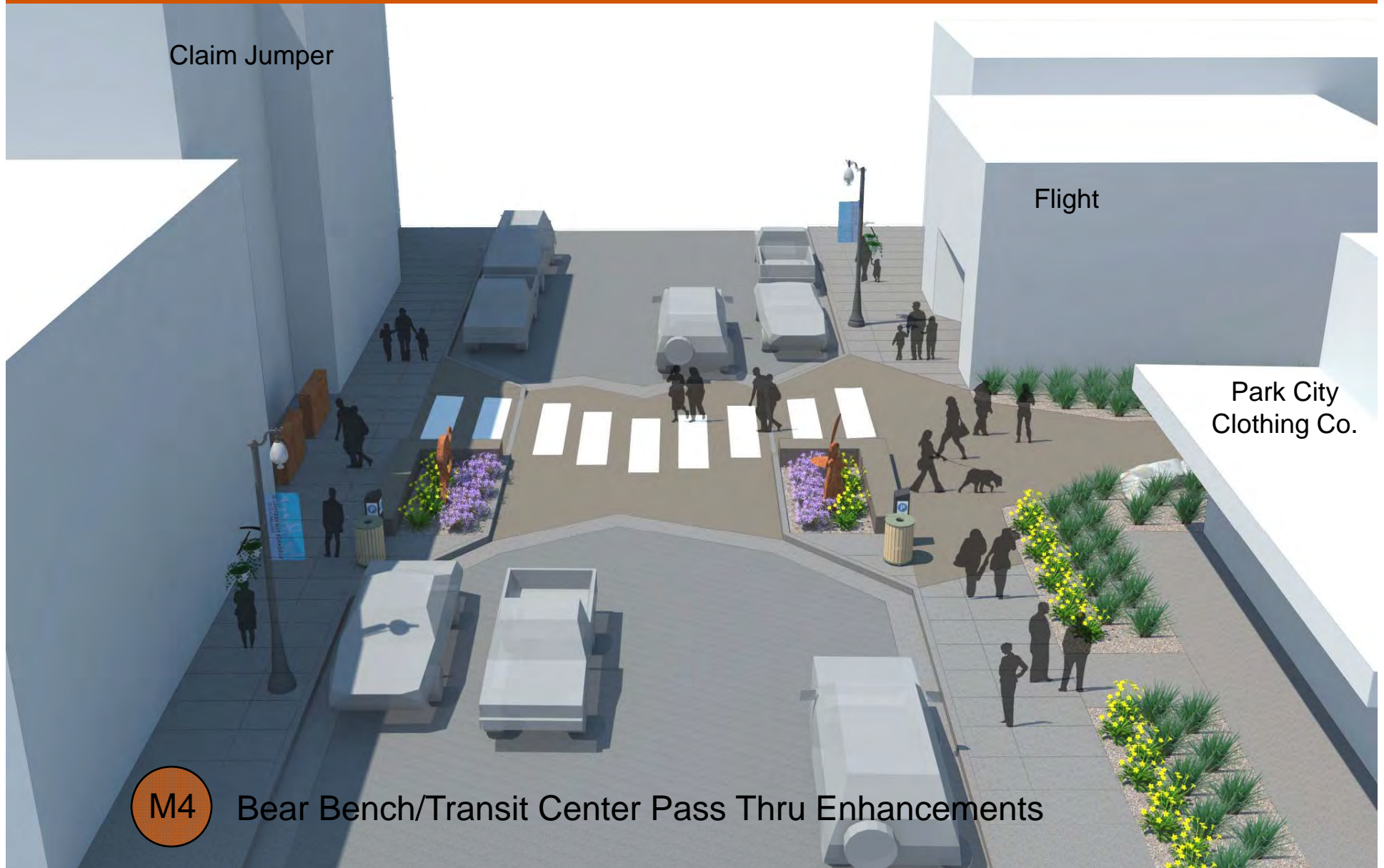
Historic Park City Enhancement Plan
Park City, UT



General Presentation
May 2012



Streetscape – Pedestrian Enhancements



Streetscape – Pedestrian Enhancements



Streetscape – Pedestrian Enhancements



Streetscape – Pedestrian Enhancements



M6

Main Street/7th Street Enhancements



Historic Park City Enhancement Plan
Park City, UT



General Presentation
May 2012



Streetscape – Pedestrian Enhancements



M6 Main Street/7th Street Enhancements

Streetscape – Pedestrian Enhancements



Main Street/Town Lift Plaza Enhancements



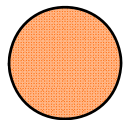
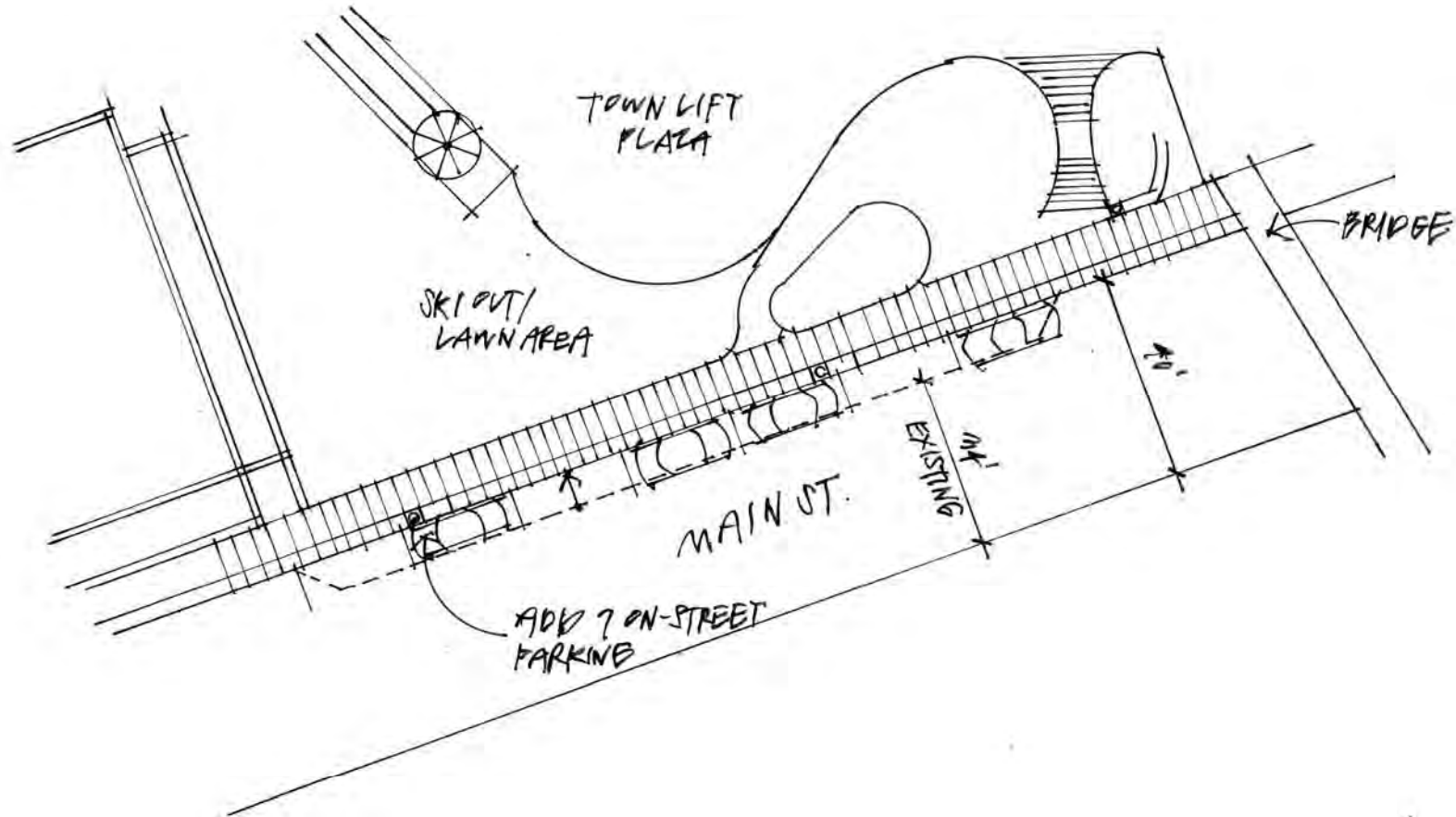
Historic Park City Enhancement Plan
Park City, UT



General Presentation
May 2012



Streetscape – Pedestrian Enhancements



Main Street/Town Lift Plaza Enhancements



Streetscape – Pedestrian Enhancements



M7 Main Street/9th Street Enhancements



Historic Park City Enhancement Plan
Park City, UT



General Presentation
May 2012



Streetscape – Pedestrian Enhancements



M7 Main Street/9th Street Enhancements

Streetscape – Pedestrian Enhancements



S1

Swede Alley/Egyptian Pass Thru Enhancements



Historic Park City Enhancement Plan
Park City, UT



General Presentation
May 2012



Streetscape – Pedestrian Enhancements



S1 Swede Alley/Egyptian Pass Thru Enhancements

Streetscape – Pedestrian Enhancements



S2

Miners Plaza Pass Thru Enhancements



Historic Park City Enhancement Plan
Park City, UT



General Presentation
May 2012



Streetscape – Pedestrian Enhancements



S2

Miners Plaza Pass Thru Enhancements



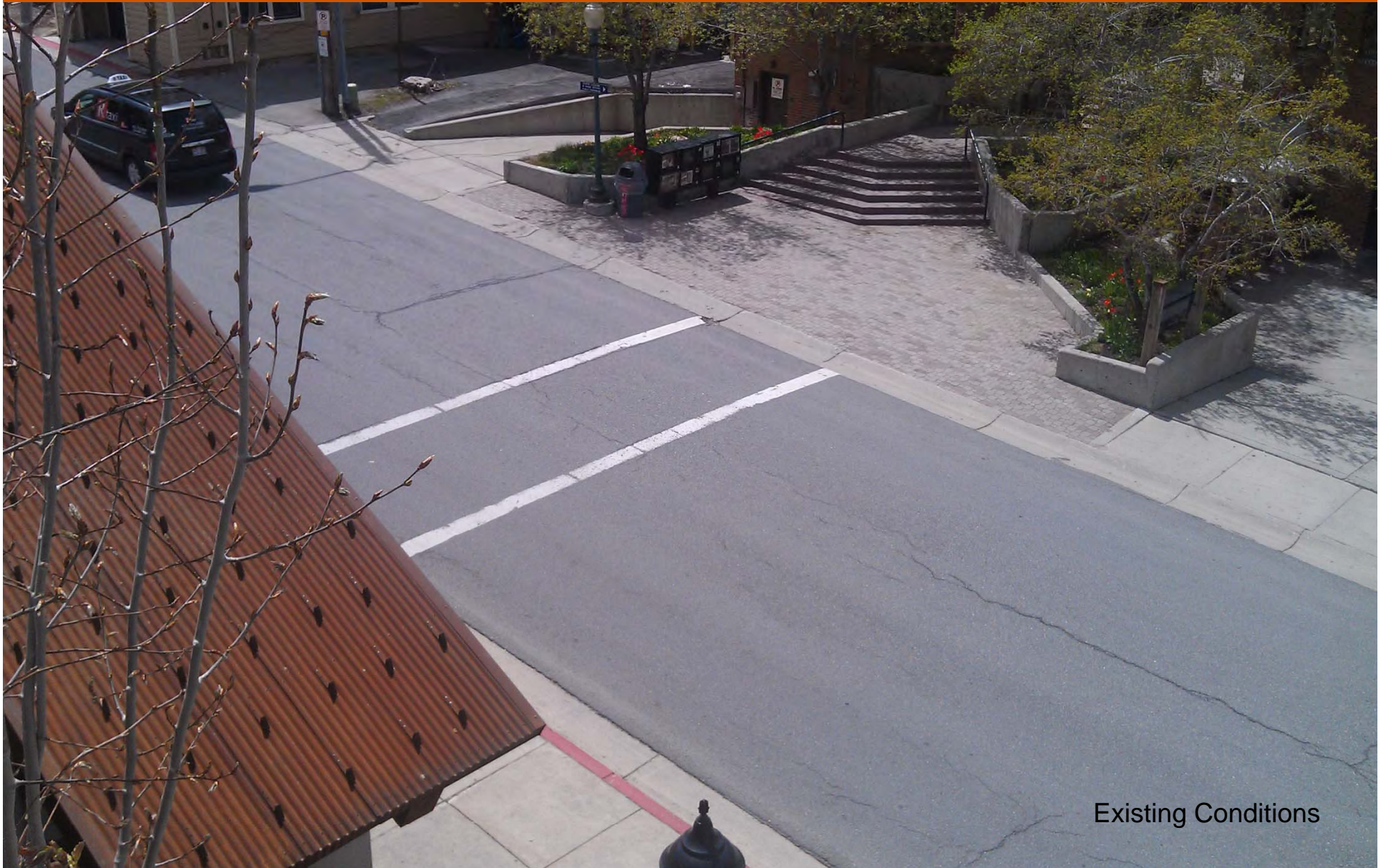
Historic Park City Enhancement Plan
Park City, UT



General Presentation
May 2012



Streetscape – China Bridge/Café Terigo Crosswalk



Existing Conditions



Historic Park City Enhancement Plan
Park City, UT



General Presentation
May 2012



Streetscape – China Bridge/Café Terigo Crosswalk



Streetscape – China Bridge/Café Terigo Crosswalk



Existing Conditions



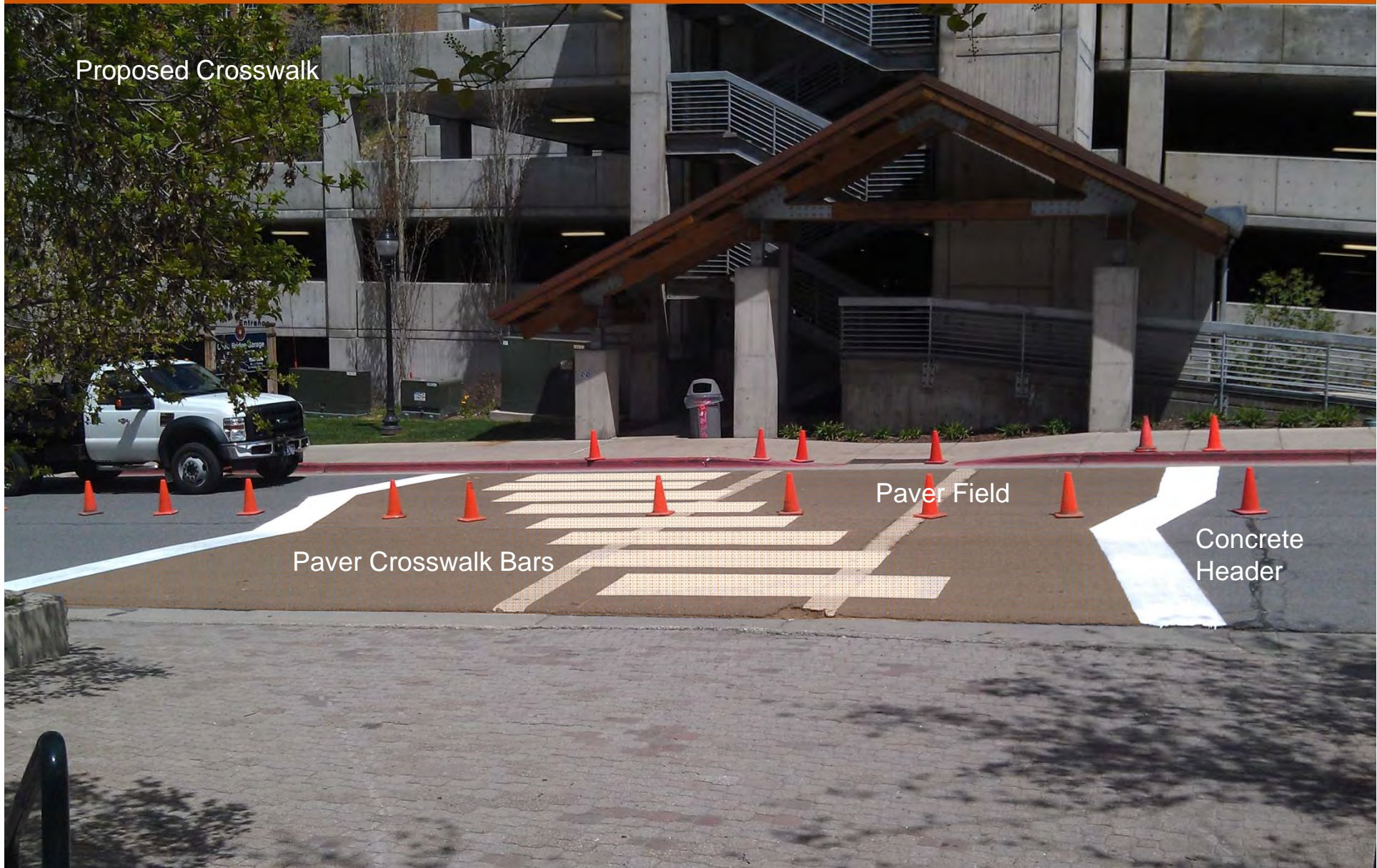
Historic Park City Enhancement Plan
Park City, UT



General Presentation
May 2012



Streetscape – China Bridge/Café Terigo Crosswalk



Proposed Crosswalk

Paver Crosswalk Bars

Paver Field

Concrete Header



Historic Park City Enhancement Plan
Park City, UT



General Presentation
May 2012



Streetscape – Pedestrian Enhancements



S3

Swede Alley/City Hall Enhancements



Historic Park City Enhancement Plan
Park City, UT



General Presentation
May 2012



Streetscape – Pedestrian Enhancements



Streetscape – Pedestrian Enhancements



Streetscape – Pedestrian Enhancements



Streetscape – Pedestrian Enhancements



S5 Swede Alley/Heber Avenue Enhancements

Streetscape – Pedestrian Enhancements



Streetscape – Pedestrian Enhancements



Streetscape – Pedestrian Enhancements



Streetscape – Pedestrian Enhancements



P3 Park Avenue/9th Street Enhancements



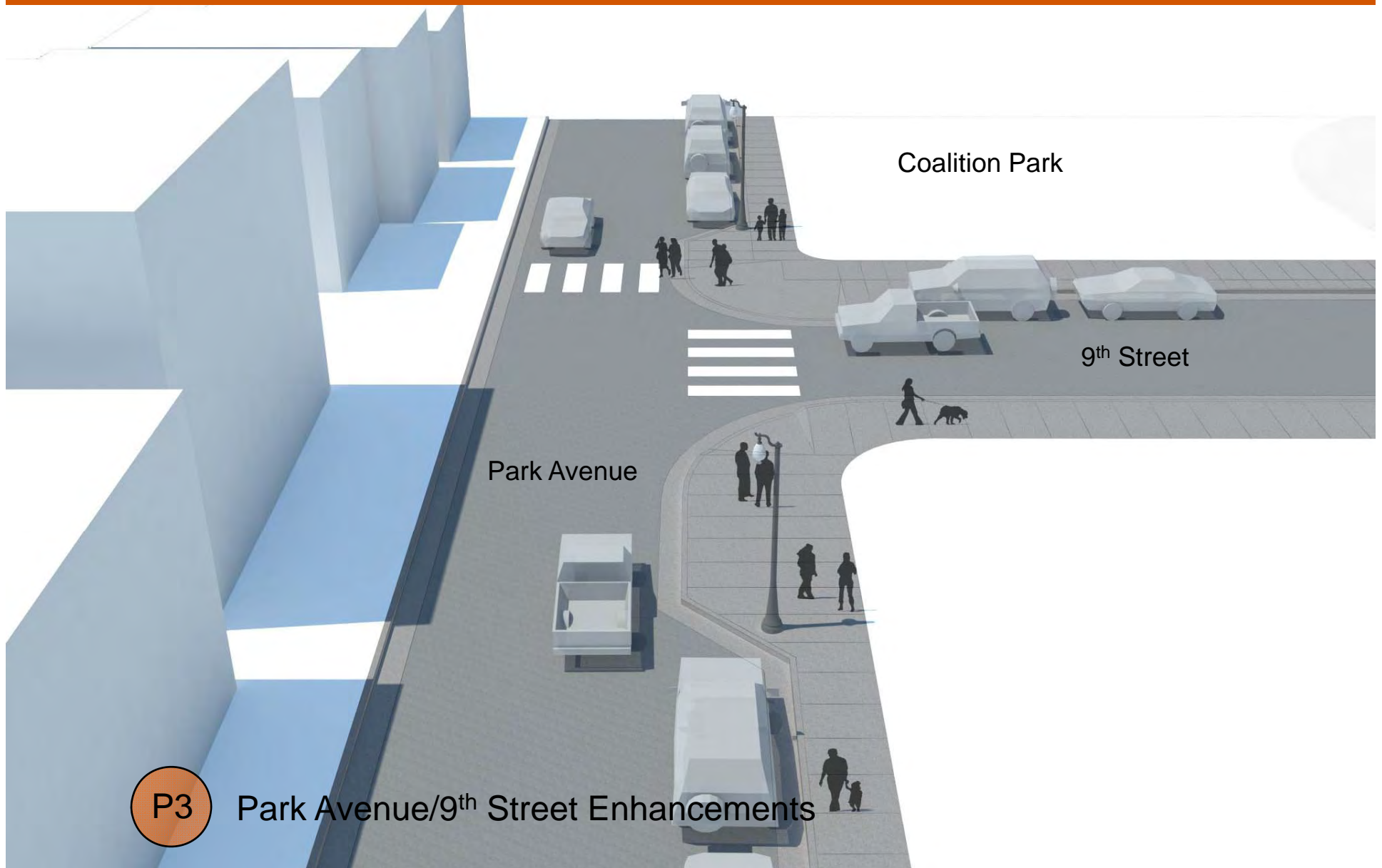
Historic Park City Enhancement Plan
Park City, UT



General Presentation
May 2012



Streetscape – Pedestrian Enhancements



Streetscape – 4th Street Enhancements



Historic Park City Enhancement Plan
Park City, UT



General Presentation
May 2012



Streetscape – 4th Street Enhancements



Historic Park City Enhancement Plan
Park City, UT



General Presentation
May 2012



Streetscape – 4th Street Enhancements



Historic Park City Enhancement Plan
Park City, UT



General Presentation
May 2012



Plazas...a complimentary network of experiences

1 Brew Pub Plaza

- Create an anchor and destination at the top of Main Street
- Celebrate the snow sports and year-round adventure recreation industry including Olympic Legacy
- Emphasis on entertainment and special events
- Create revenue generating uses and activities
- Link to the heritage and history of the site

2 Miners Plaza

- The “family room” of Main Street
- Celebrate the mining industry through uses of materials, design features and public art
- Create a casual yet flexible atmosphere for day-to-day use and special events
- Emphasize connectivity to Swede Alley/parking structure
- Improve safety through enhanced lighting

3 Coalition Park Trailhead

- Passive and park-like respecting the conservation easement and history of the site
- Act as a gateway and local/regional trailhead for the Historic District
- Celebrate our recognized biking/hiking culture
- Provide children and families with location to experience biking/hiking

4 Schruers Centennial Plaza

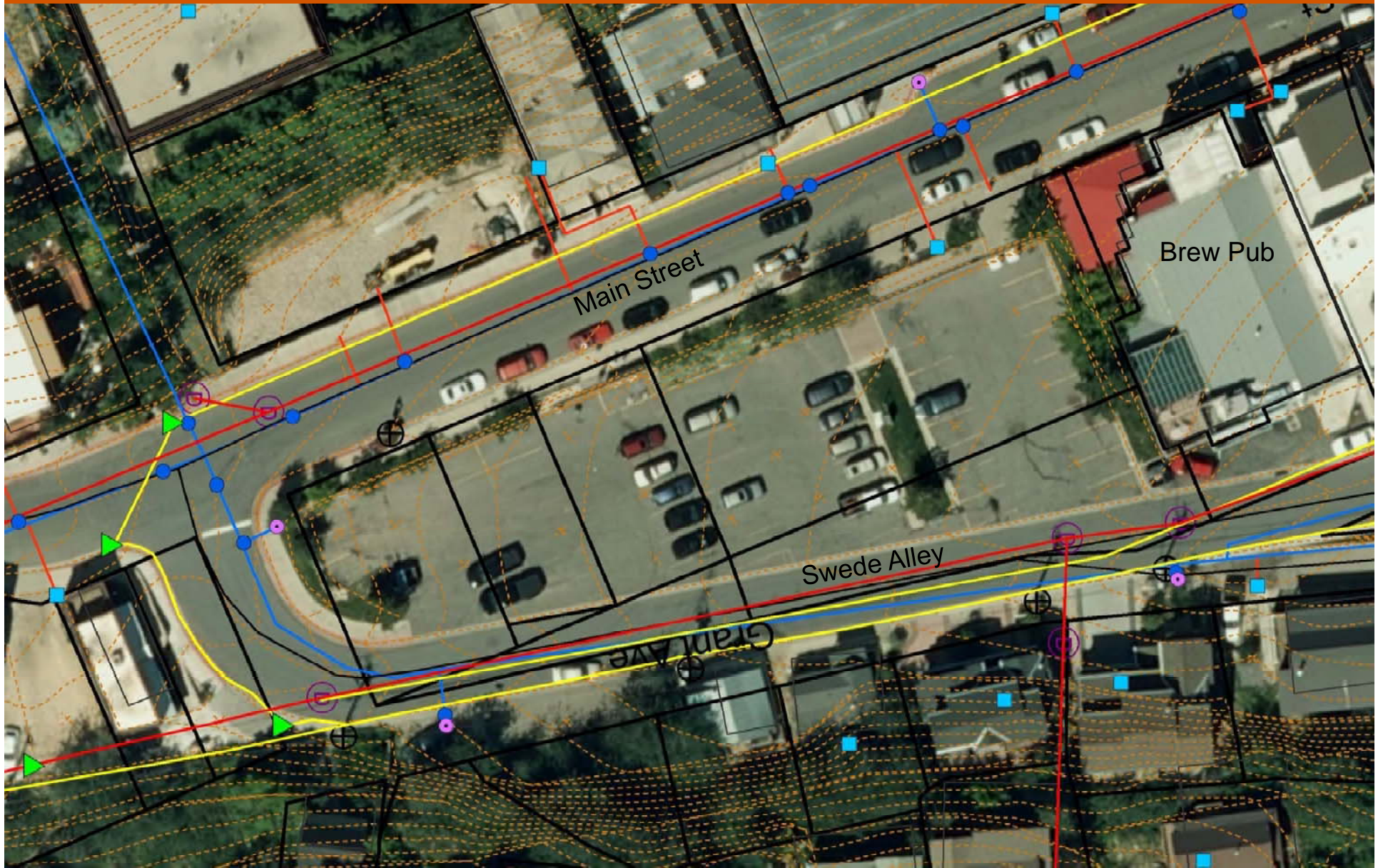
- Enhance and provide a niche resting spot along the “bread crumb” trail of experiences
- Emphasize connectivity and access for users to the West
- Celebrate the heroes of our community

5 Historic Wall/City Hall

- Provide a discovered passive connection to place by showcasing the historic wall
- Create civic presence, identity and connectivity for City Hall in the Main Street District
- Promote civic investment and commitment to arts and culture through integration of public art



Brew Pub Plaza – Existing Conditions



Historic Park City Enhancement Plan
Park City, UT



General Presentation
May 2012



Brew Pub Plaza – Existing Conditions



Historic Park City Enhancement Plan
Park City, UT



General Presentation
May 2012



Brew Pub Plaza – Option One



Historic Park City Enhancement Plan
Park City, UT



General Presentation
May 2012



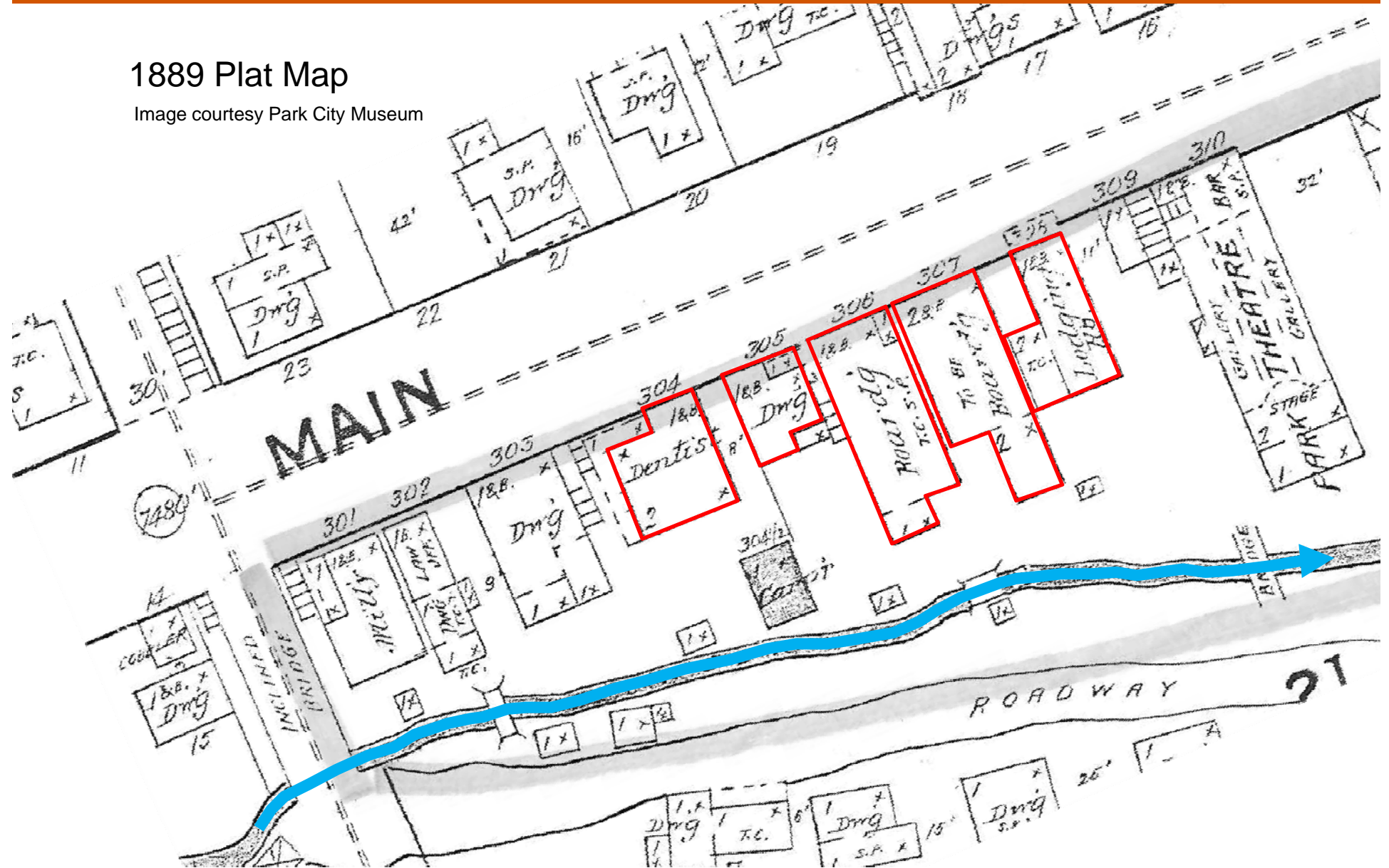
Brew Pub Plaza – Option One



Brew Pub Plaza – Option One

1889 Plat Map

Image courtesy Park City Museum



Brew Pub Plaza – Option One



Historic Park City Enhancement Plan
Park City, UT



General Presentation
May 2012



Brew Pub Plaza



Plaza Deck

Main Street



Historic Park City Enhancement Plan
Park City, UT



General Presentation
May 2012



Brew Pub Plaza



Seat Steps

Water/Fire Features

Multi-Purpose Plaza



Historic Park City Enhancement Plan
Park City, UT



General Presentation
May 2012



Brew Pub Plaza



Multi-Purpose Plaza

Swede Alley

Parking Entry/Exit



Historic Park City Enhancement Plan
Park City, UT



General Presentation
May 2012



Brew Pub Plaza



Historic Park City Enhancement Plan
Park City, UT



General Presentation
May 2012



Brew Pub Plaza



Historic Park City Enhancement Plan
Park City, UT



General Presentation
May 2012



Brew Pub Plaza



Alternative architectural concepts are being considered



Historic Park City Enhancement Plan
Park City, UT



General Presentation
May 2012



Brew Pub Plaza



Alternative architectural concepts are being considered



Historic Park City Enhancement Plan
Park City, UT



General Presentation
May 2012



Brew Pub Plaza

Alternative architectural concepts are being considered



Historic Park City Enhancement Plan
Park City, UT



General Presentation
May 2012



Brew Pub Plaza – Precedence



Historic Park City Enhancement Plan
Park City, UT



General Presentation
May 2012



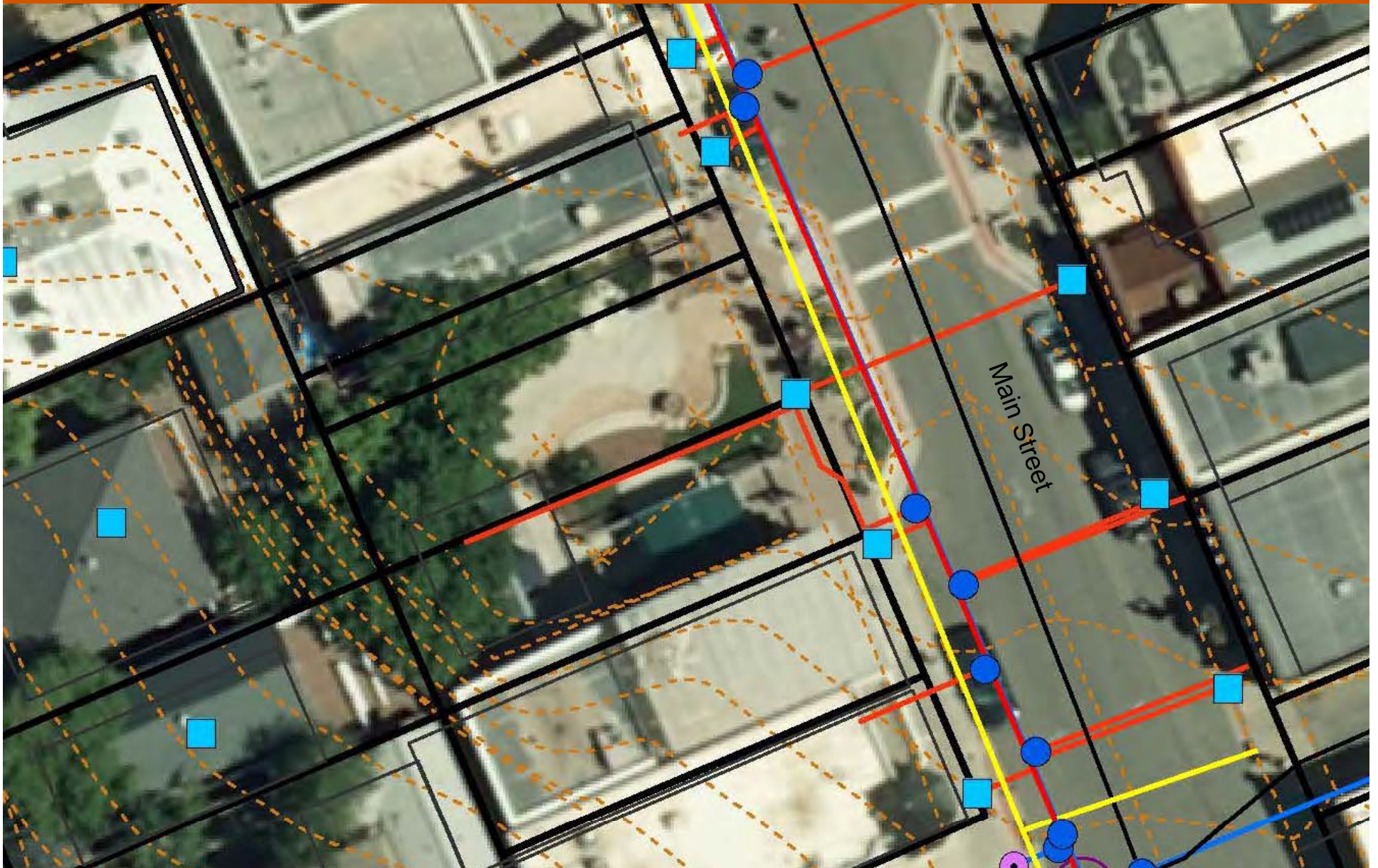
Brew Pub Plaza – Flexibility



Brew Pub Plaza – Option Two



Miners Plaza – Existing Conditions



Historic Park City Enhancement Plan
Park City, UT



General Presentation
May 2012



Miners Plaza – Existing Conditions



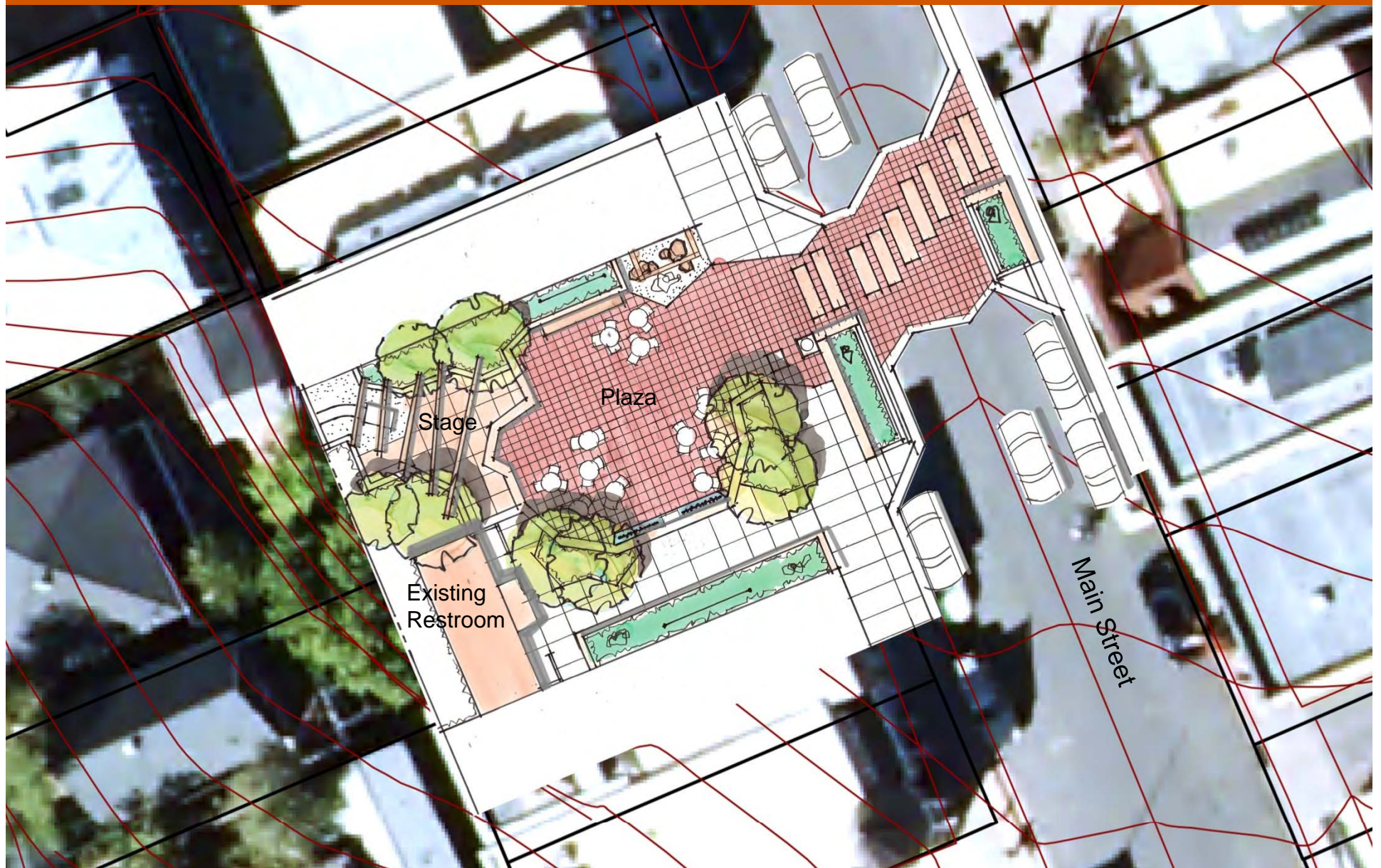
Historic Park City Enhancement Plan
Park City, UT



General Presentation
May 2012



Miners Plaza



Historic Park City Enhancement Plan
Park City, UT



General Presentation
May 2012



Miners Plaza



Historic Park City Enhancement Plan
Park City, UT



General Presentation
May 2012



Miners Plaza



Historic Park City Enhancement Plan
Park City, UT



General Presentation
May 2012



Miners Plaza



Historic Park City Enhancement Plan
Park City, UT



General Presentation
May 2012



Miners Plaza



Historic Park City Enhancement Plan
Park City, UT



General Presentation
May 2012



Miners Plaza



Historic Park City Enhancement Plan
Park City, UT



General Presentation
May 2012



Miners Plaza



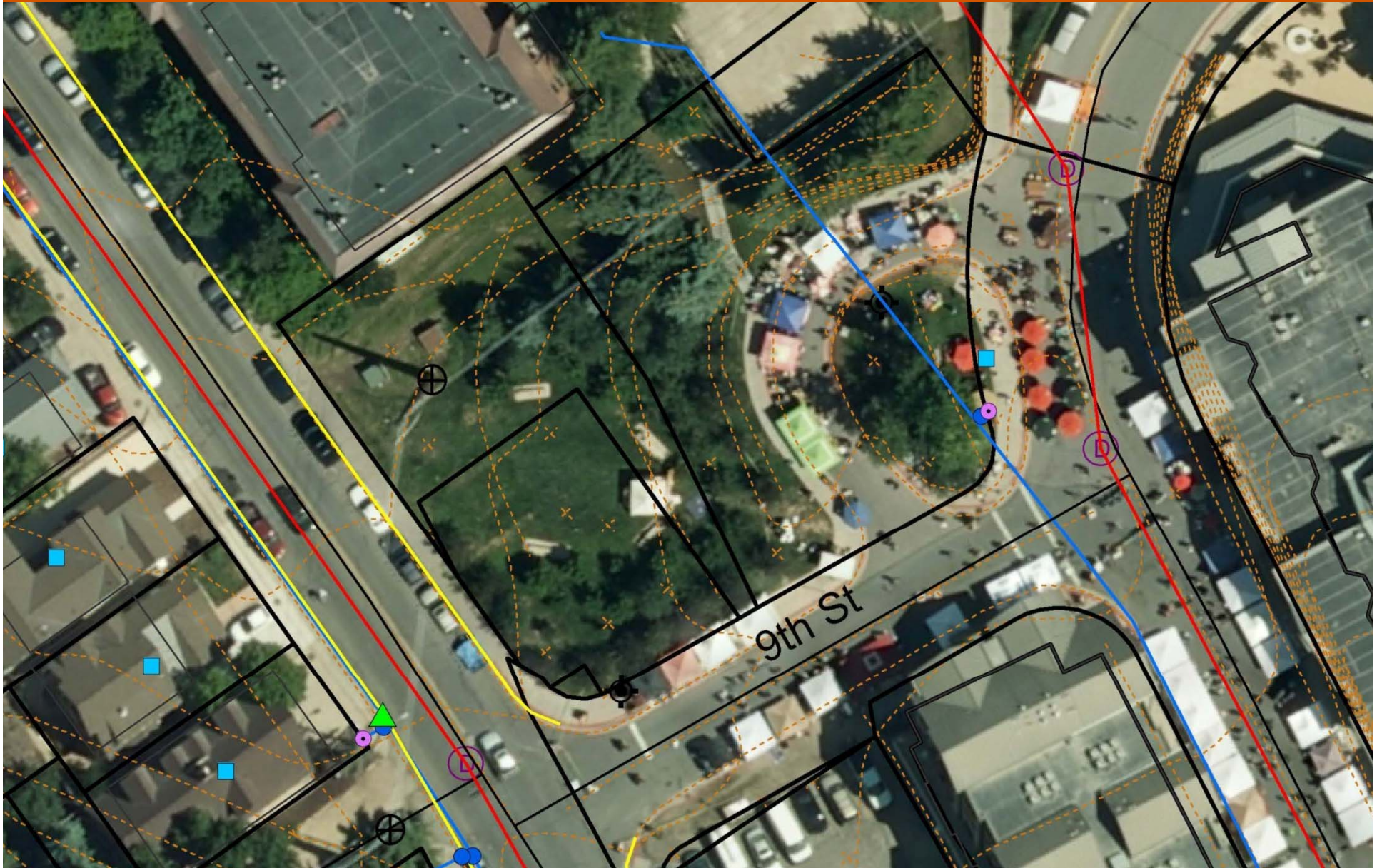
Historic Park City Enhancement Plan
Park City, UT



General Presentation
May 2012



Coalition Trailhead Park – Existing Conditions



Historic Park City Enhancement Plan
Park City, UT



General Presentation
May 2012



Coalition Trailhead Park – Existing Conditions



Historic Park City Enhancement Plan
Park City, UT



General Presentation
May 2012



Coalition Trailhead



UP&L Water Tower

Image courtesy Park City Museum

Coalition Trailhead



Historic Park City Enhancement Plan
Park City, UT



General Presentation
May 2012



Coalition Trailhead



Main Street



Historic Park City Enhancement Plan
Park City, UT



General Presentation
May 2012



Coalition Trailhead

Alternative architectural concepts are being considered



Historic Park City Enhancement Plan
Park City, UT



General Presentation
May 2012



Coalition Trailhead



9th Street

Main Street



Historic Park City Enhancement Plan
Park City, UT



General Presentation
May 2012



Coalition Trailhead



Historic Park City Enhancement Plan
Park City, UT



General Presentation
May 2012



Coalition Trailhead



Historic Park City Enhancement Plan
Park City, UT



General Presentation
May 2012



Coalition Trailhead



9th Street



Historic Park City Enhancement Plan
Park City, UT



General Presentation
May 2012



Coalition Trailhead



9th Street



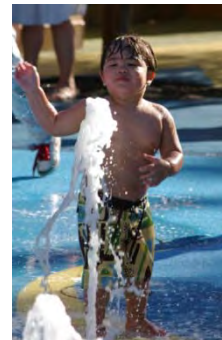
Historic Park City Enhancement Plan
Park City, UT



General Presentation
May 2012



Coalition Trailhead



Historic Park City Enhancement Plan
Park City, UT



General Presentation
May 2012



Historic Wall/City Hall

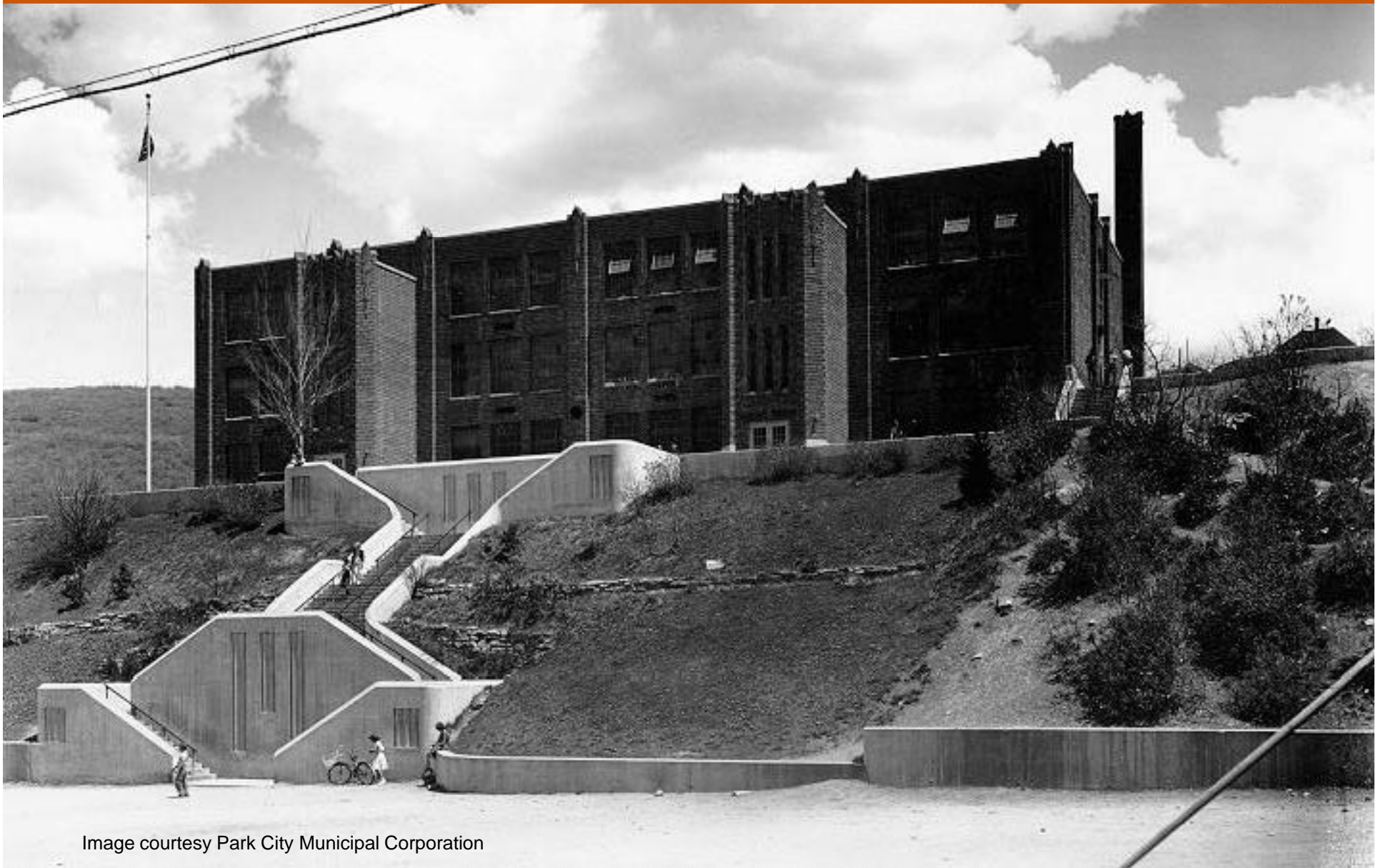


Image courtesy Park City Municipal Corporation



Historic Park City Enhancement Plan
Park City, UT



General Presentation
May 2012



Historic Wall/City Hall



Historic Park City Enhancement Plan
Park City, UT



General Presentation
May 2012



Historic Wall/City Hall



Historic Park City Enhancement Plan
Park City, UT



General Presentation
May 2012



Historic Wall/City Hall Art Walk



Historic Park City Enhancement Plan
Park City, UT



General Presentation
May 2012



Historic Wall/City Hall



Historic Park City Enhancement Plan
Park City, UT



General Presentation
May 2012



Historic Wall/City Hall



Historic Park City Enhancement Plan
Park City, UT



General Presentation
May 2012



Historic Wall/City Hall



Historic Park City Enhancement Plan
Park City, UT



General Presentation
May 2012



Historic Wall/City Hall



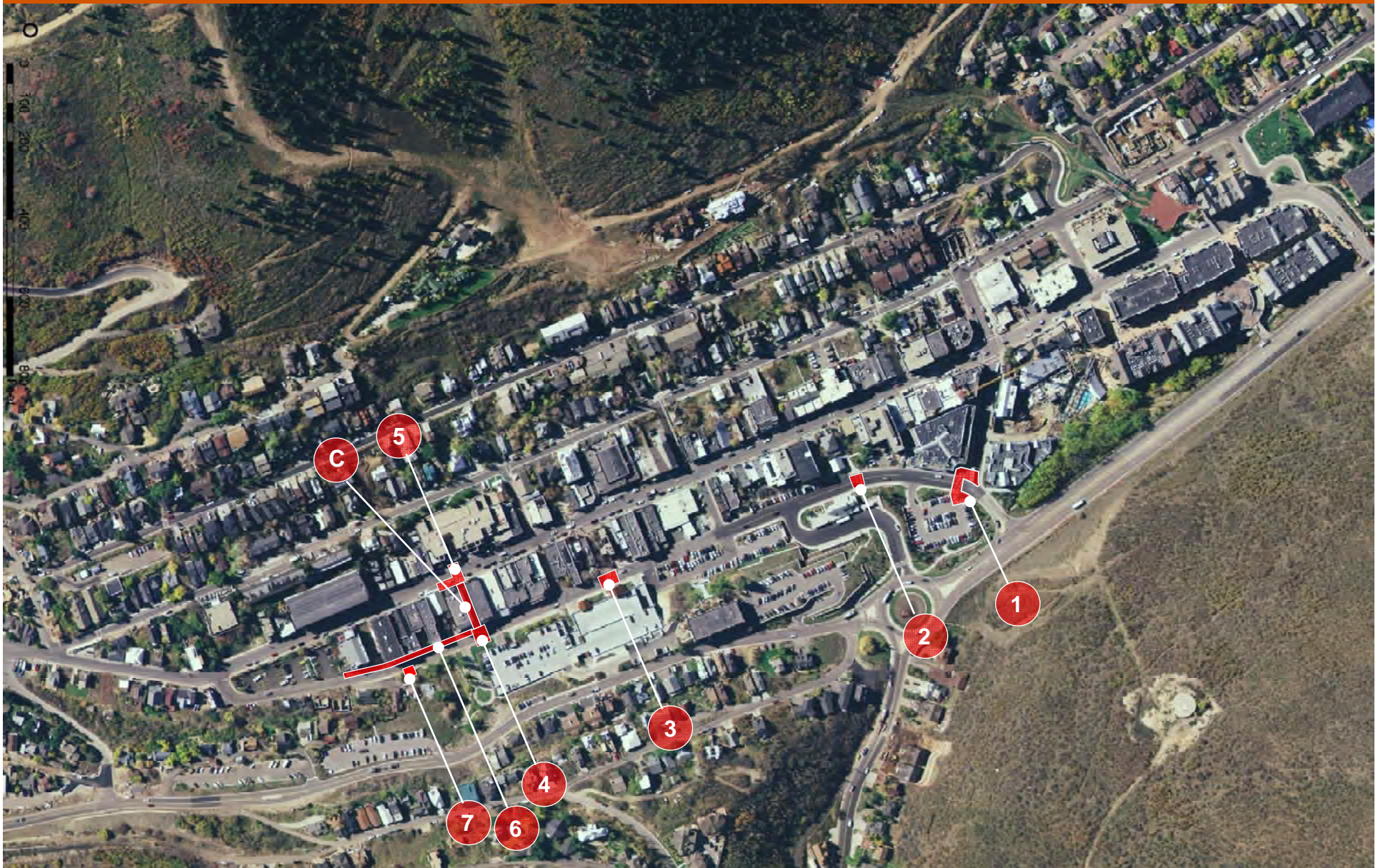
Historic Park City Enhancement Plan
Park City, UT



General Presentation
May 2012



Immediate Needs (“Low Hanging Fruit”)



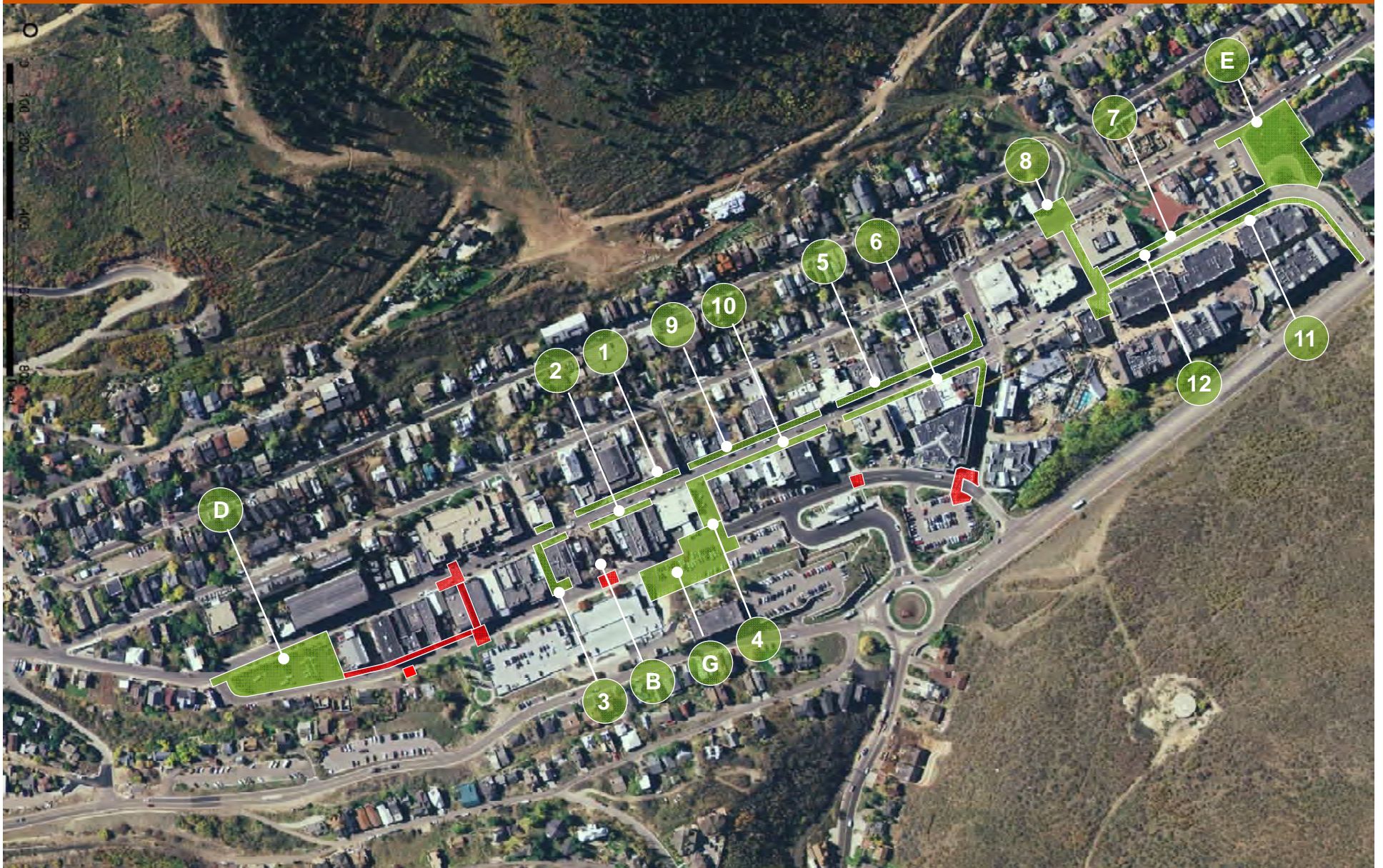
Historic Park City Enhancement Plan
Park City, UT



General Presentation
May 2012



Short Term Needs (1-5 years)



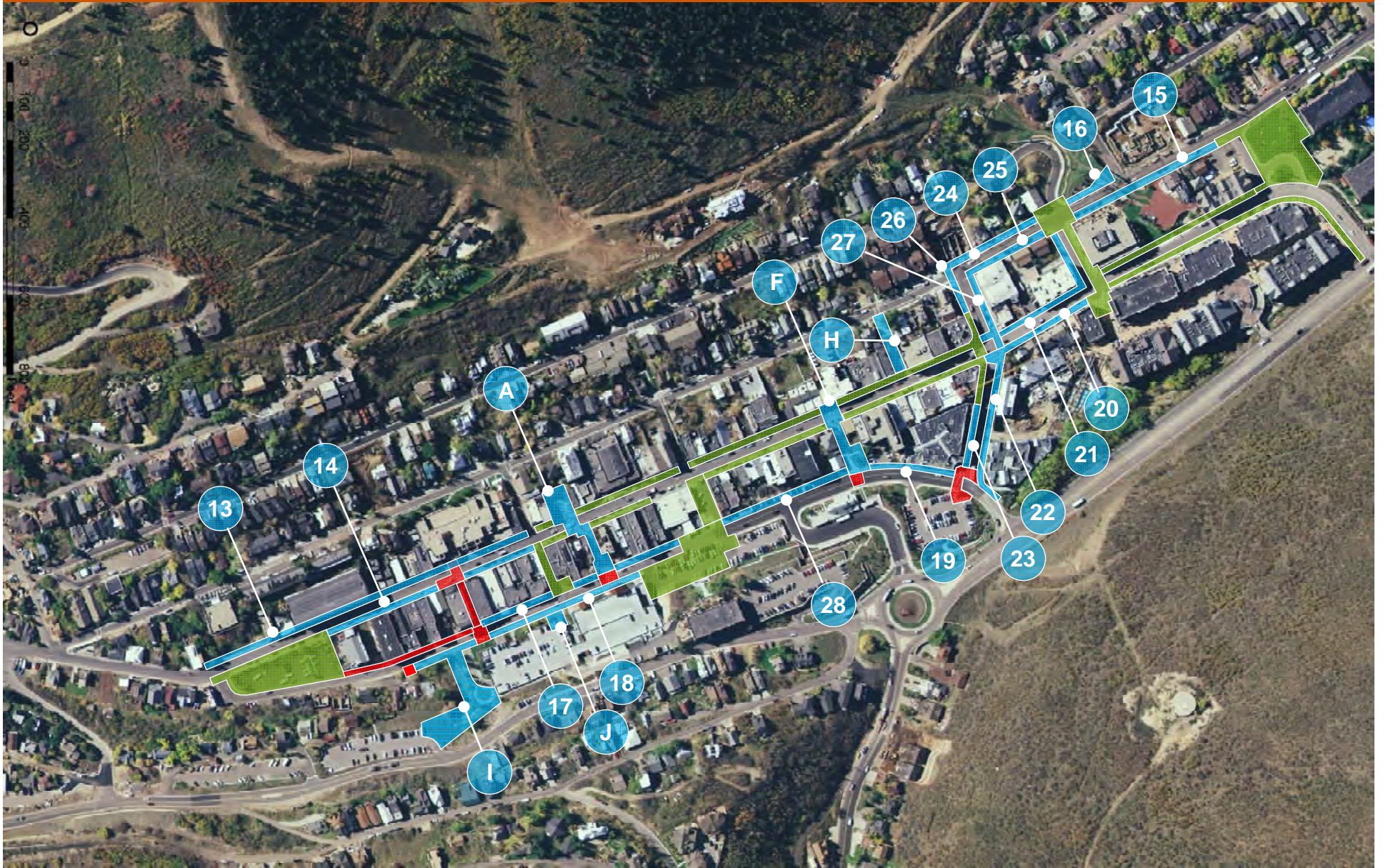
Historic Park City Enhancement Plan
Park City, UT



General Presentation
May 2012



Long Term Needs (5-10 years)



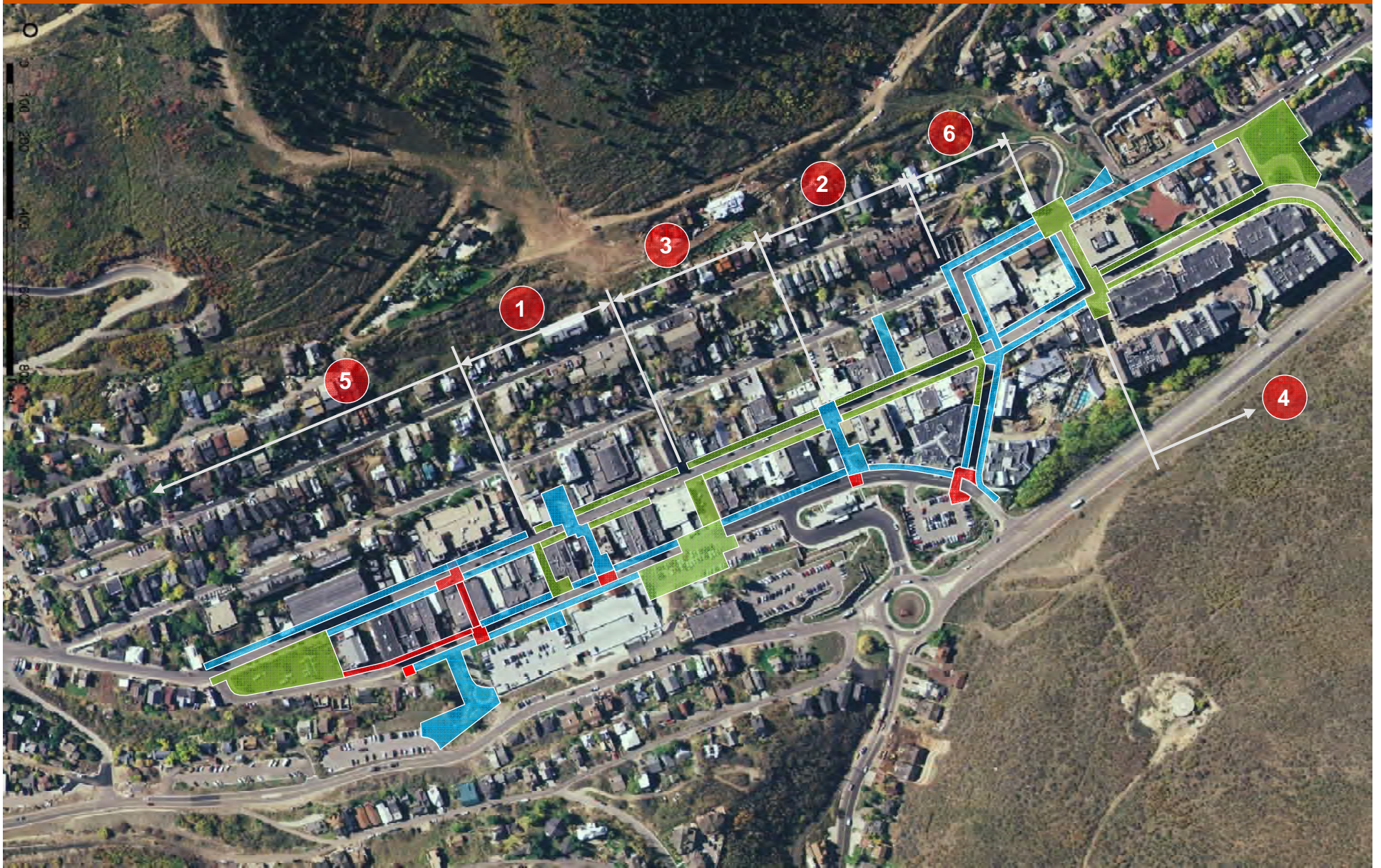
Historic Park City Enhancement Plan
Park City, UT



General Presentation
May 2012



Main Street Streetscape Phasing/Sequencing



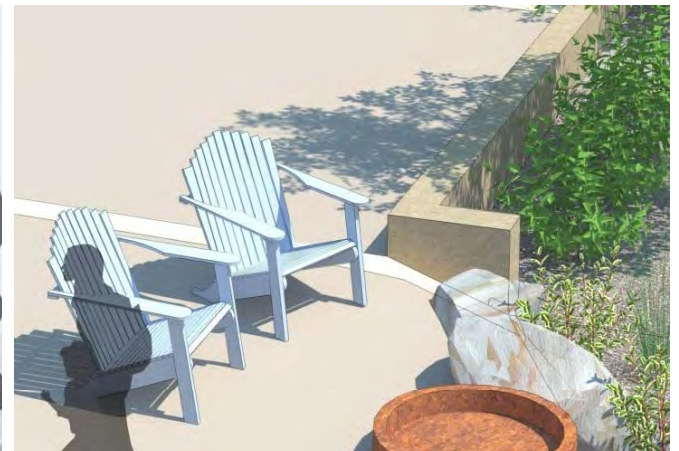
Historic Park City Enhancement Plan
Park City, UT



General Presentation
May 2012



To enhance the pedestrian experience and encourage residents and visitors to linger, circulate and explore throughout the Historic Park City District.



Historic Park City Enhancement Plan
Park City, UT



General Presentation
May 2012

