

To enhance the pedestrian experience and encourage residents and visitors to linger, circulate and explore throughout the Historic Park City District.



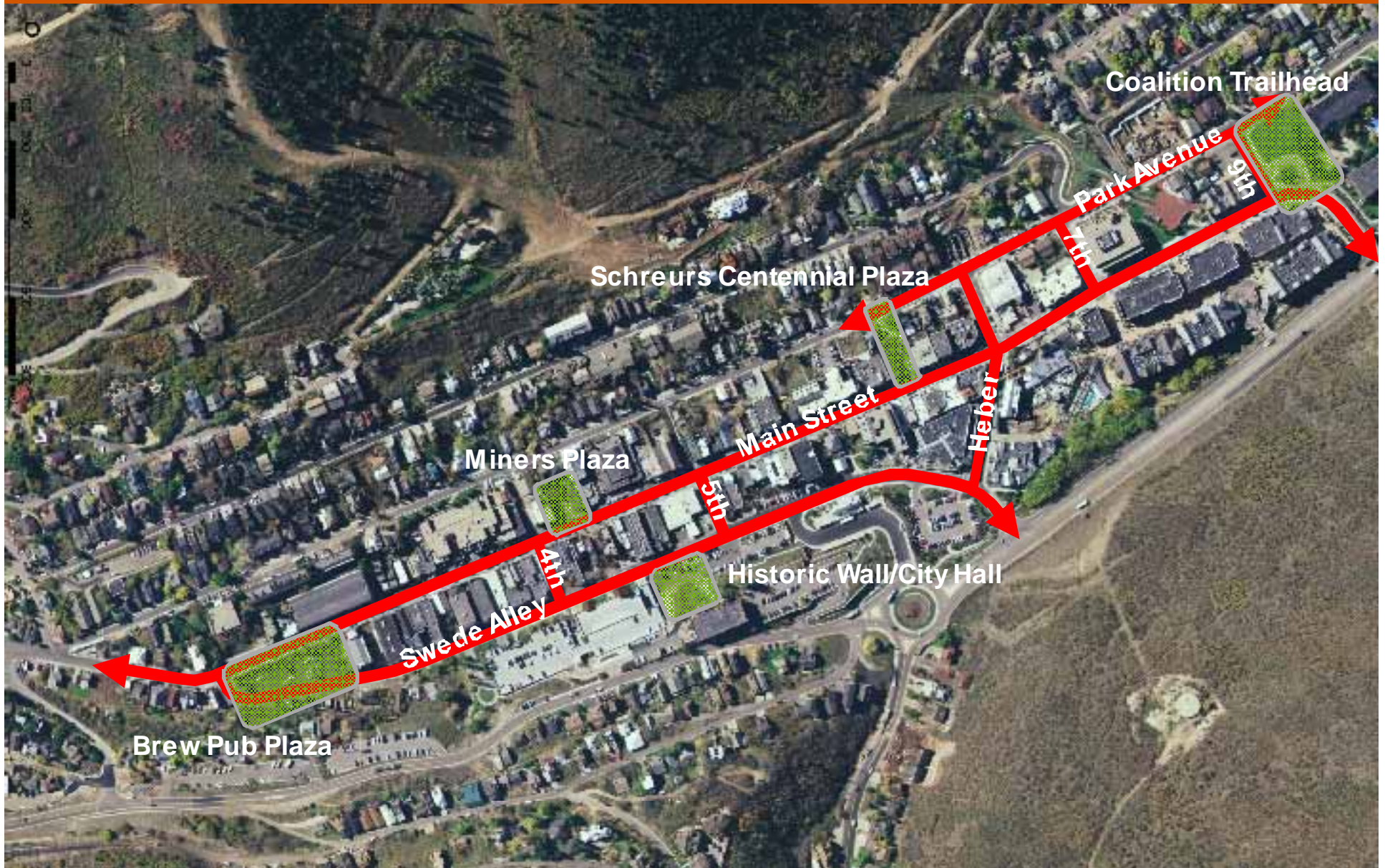
Historic Park City Enhancement Plan
Park City, UT



Public Open House Presentation
April 3, 2012



Study Area / Scope of Work



Historic Park City Enhancement Plan
Park City, UT



Public Open House Presentation
April 3, 2012



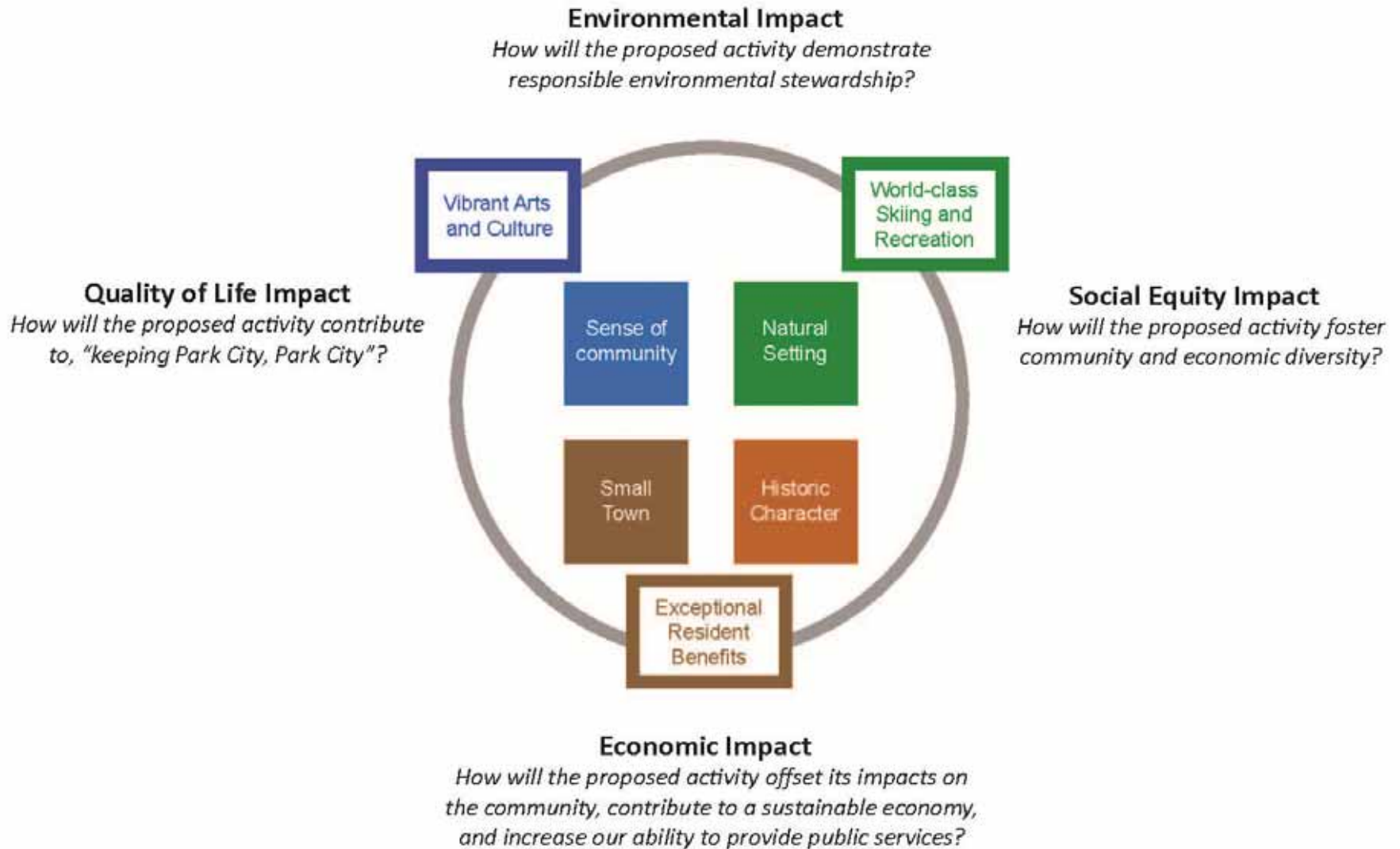
Place Audit

Why are people emotionally attached and attracted to Park City?

- Natural beauty/setting
- Extensive offering of year-round activities
- Small town charm
- Fun-loving attitude
- Historic qualities
- Sense of community
- Authenticity



Quadruple Bottom Line Evaluation



Quality of Life

How will proposal contribute to “keeping Park City, Park City”?

- Encourage socialization for residents and visitors
- Showcase historic and community narratives
- Maintain the “funk” ... authenticity
- Promote physical comfort and safety
- Celebrate the snow sport and year-round recreation lifestyle
- Enhance connectivity to and from the Historic District
- Enhance and promote arts and culture



Public Art

“Public art is a true symbol of a city’s maturity. It increases a community’s assets and expresses a community’s positive sense of identity and values. It helps green space thrive, enhances roadsides, pedestrian corridors, and community gateways; it demonstrates unquestionable civic and corporate pride in citizenship and affirms an educational environment. A city with public art is a city that thinks and feels.” – Newport News Public Art Foundation

DESTINATION ART



EXPERIENTIAL ART



PLAYFUL ART



ENVIRONMENTAL ART



HISTORIC NARRATIVE



DIGITAL ART



OBJECT ART



INTERACTIVE ART



FUNCTIONAL ART



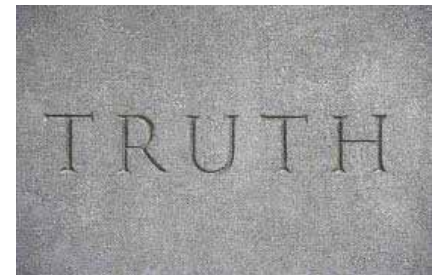
INTEGRATED ART



INSTALLATION ART



INTERPRETIVE ART



Environmental Impact

How will proposal demonstrate responsible environmental stewardship?

- Remove/recycle deteriorating infrastructure requiring ongoing maintenance resources
- Replace deteriorating infrastructure with more durable and recyclable materials providing long-term, life-cycle benefits to maintenance and operation expenses
- Reduce light pollution and energy consumption from inefficient or antiquated fixtures
- Water efficient landscape materials while enhancing air quality
- Goal...offset new energy requirements and current power needs of street lighting with alternative energy sources



Social Equity Impact

How will proposal foster community and economic diversity?

- Create a network of complimentary gathering spaces, large and small to appeal to diverse resident and visitor needs
- Consider all ages, genders and races - intergenerational
- Opportunities for children and families by create atmosphere for learning and education
- Improved accessibility
- Promote cultural preservation
- Enhance connections and access to public transit and parking



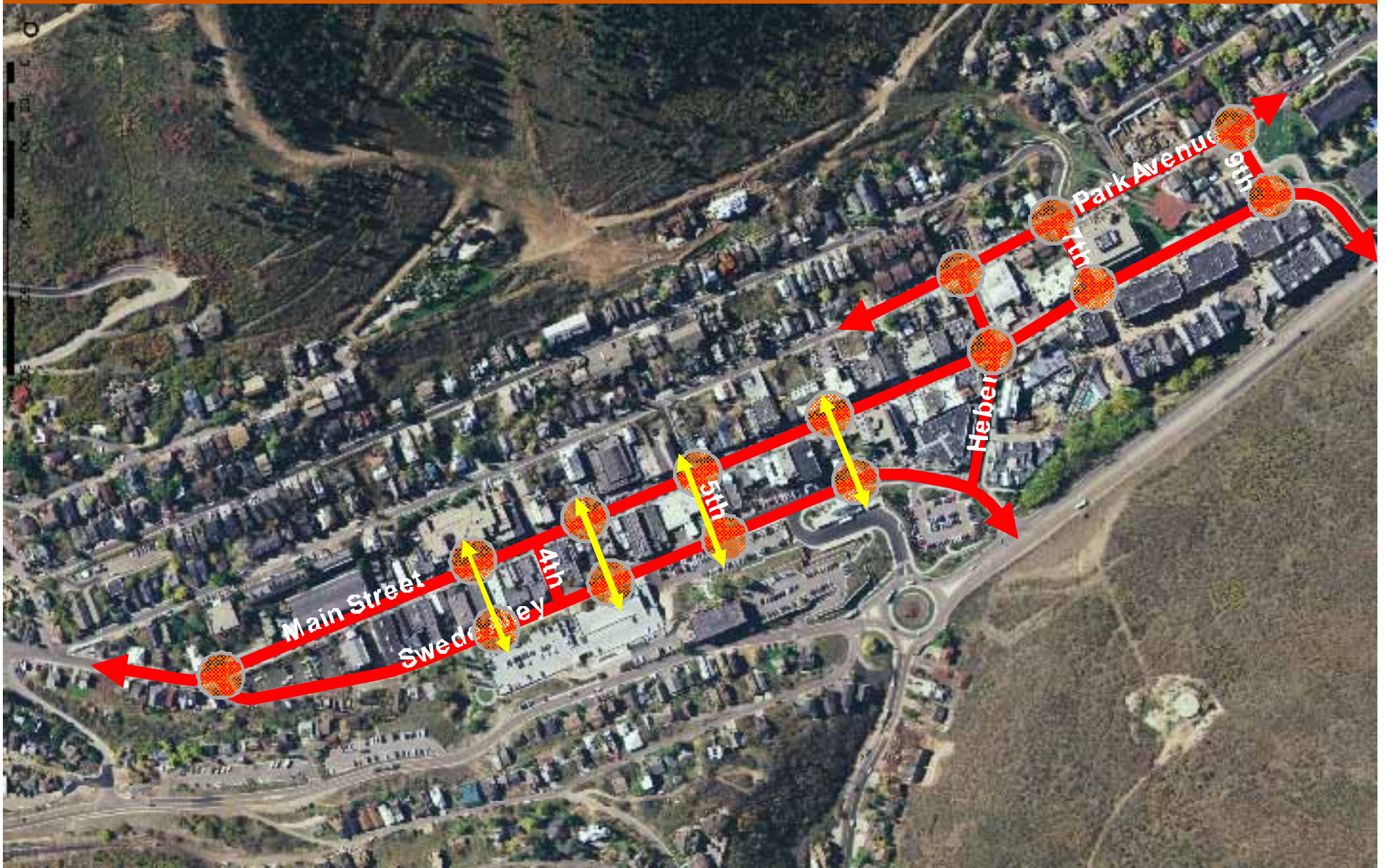
Economic Impact

How will proposal offset its impacts on the community, contribute to a sustainable economy and increase our ability to provide public services?

- Commitment and investment into social infrastructure
- Investment in quality public facilities to increase tourism through added uses and attractions
- Catalyze the atmosphere for economic development including diversity of retail users and adaptive reuse of underutilized properties
- Maintain current parking counts



Study Area / Scope of Work – Streetscape Improvements



Historic Park City Enhancement Plan
Park City, UT



Public Open House Presentation
April 3, 2012



Anatomy of Streetscape...its not just a sidewalk!

Key Components of “Streetscape”

- Hardscape (curbs/paving/steps/ramps/walls)
 - Physical connection to place
 - Organization/pedestrian flow
 - Tactile/texture/materiality and link to local materials
 - Temperature...warm/cool
 - Interpretive/Informational
- Vertical Features (light poles/bollards/columns/canopies/parking meters/signs)
 - Three dimensional definition
 - Mood/safety
 - Color (banners/hanging baskets/signs)
 - Character
- Furnishings (benches/trash receptacles/bike racks/clock towers)
 - Comfort/convenience
 - Continuity/consistency
 - Inspiration/sense of place



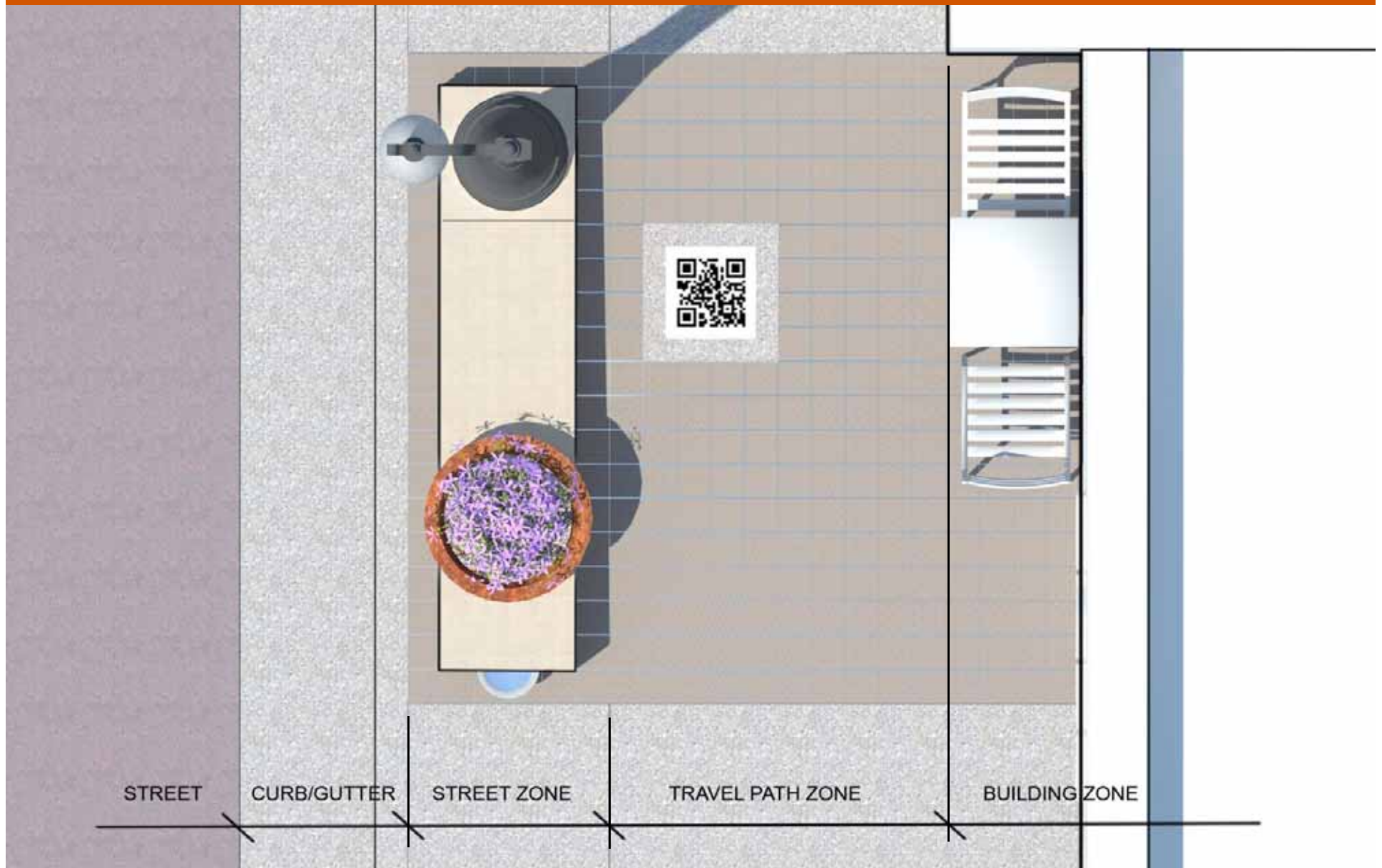
Historic Park City Enhancement Plan
Park City, UT



Public Open House Presentation
April 3, 2012



Streetscape - Framework



Historic Park City Enhancement Plan
Park City, UT



Public Open House Presentation
April 3, 2012



Streetscape – Existing Paving Conditions



Historic Park City Enhancement Plan
Park City, UT



Public Open House Presentation
April 3, 2012



Streetscape – Proposed Paving Materials



Historic District /Main Street Granite Curbs



Granite Paving



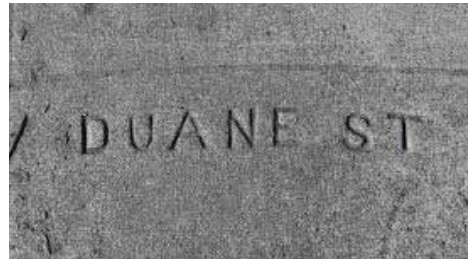
Clay Brick Paving



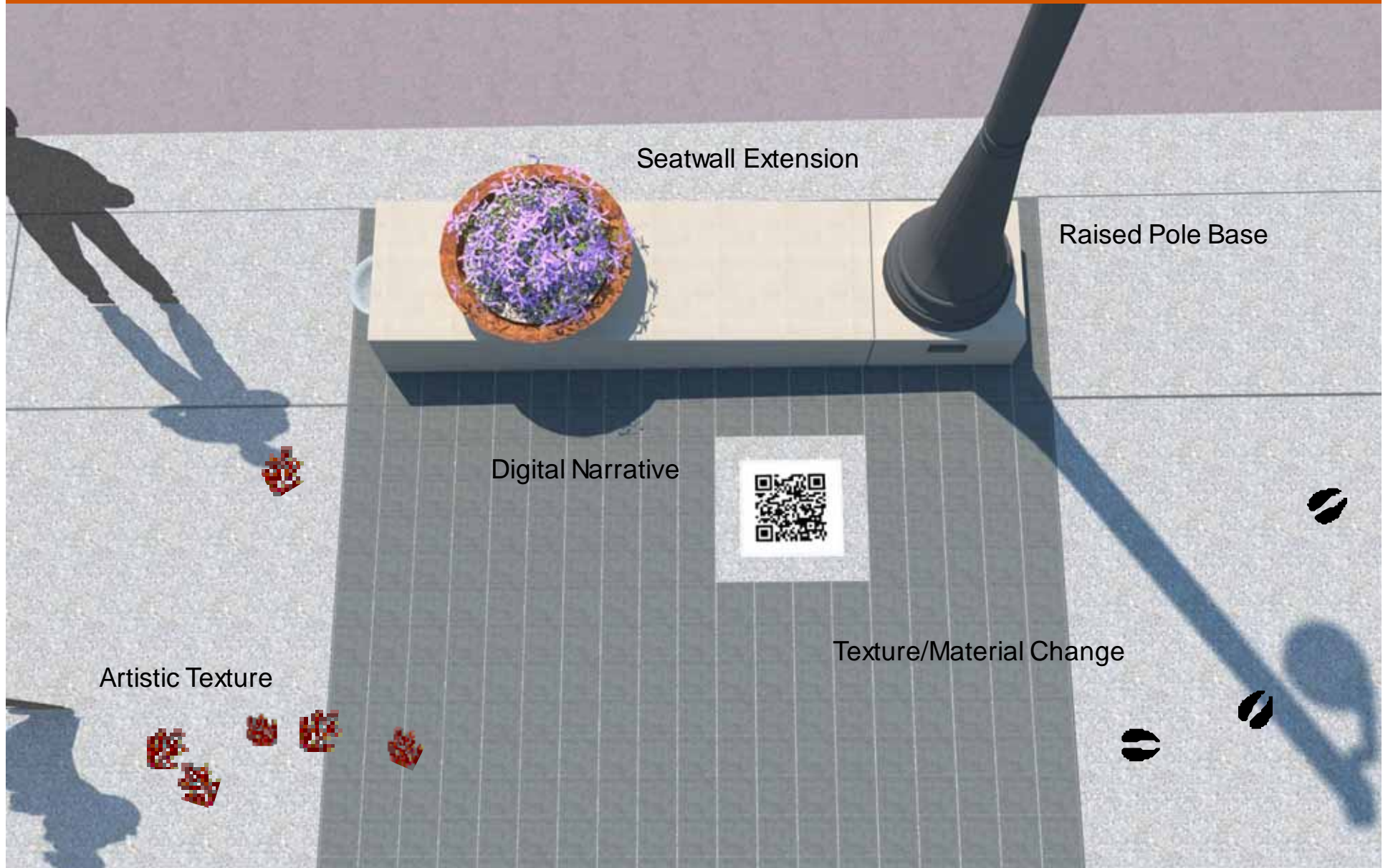
Streetscape – Proposed Paving Materials



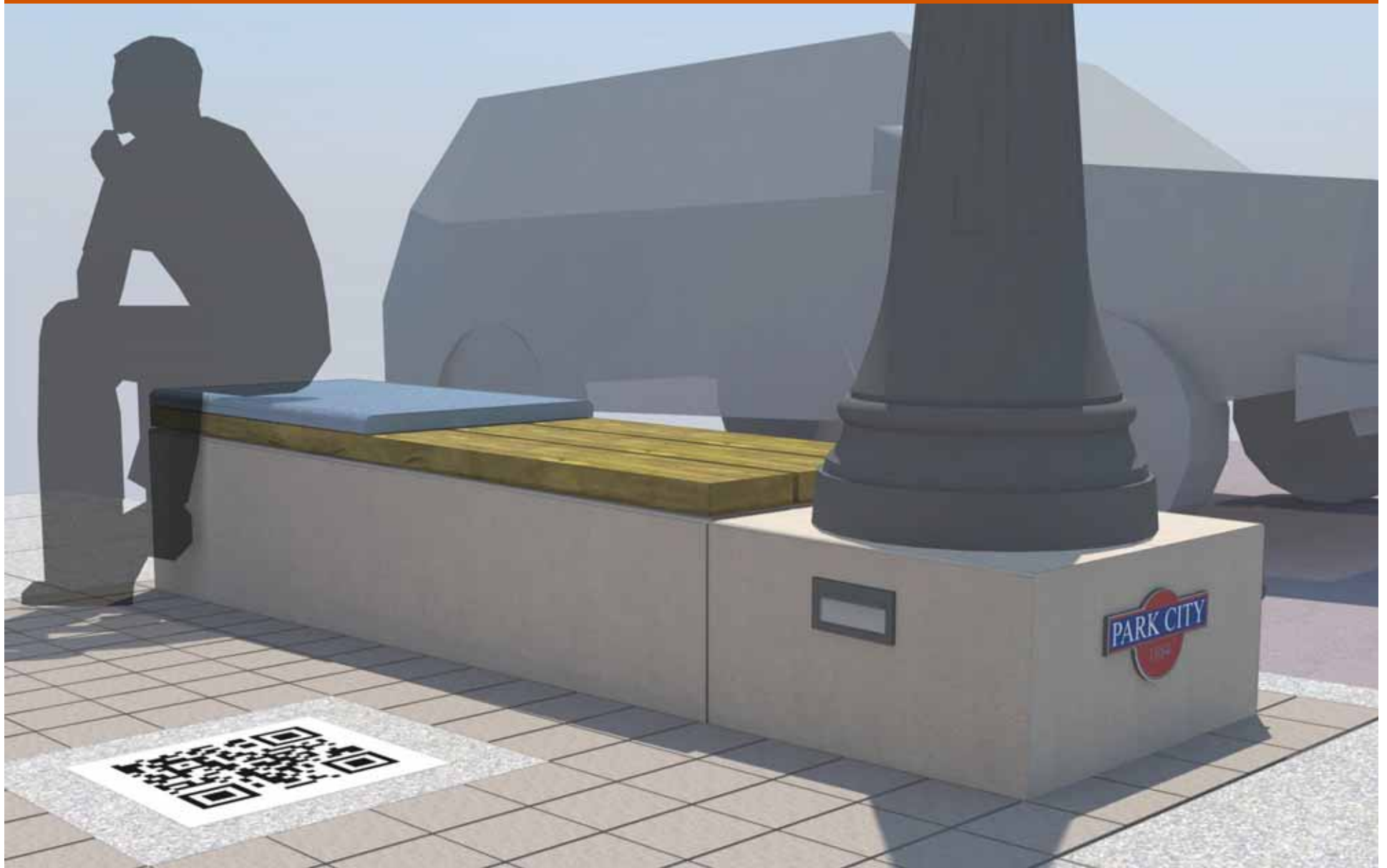
Concrete Curb and Gutter
Concrete Paving



Streetscape – Hardscape/Vertical Features



Streetscape – Hardscape/Vertical Features



Historic Park City Enhancement Plan
Park City, UT



Public Open House Presentation
April 3, 2012



Streetscape – Hardscape/Vertical Features



Historic Park City Enhancement Plan
Park City, UT



Public Open House Presentation
April 3, 2012



Streetscape – Hardscape/Vertical Features



Streetscape – Furnishings

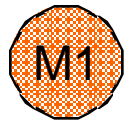
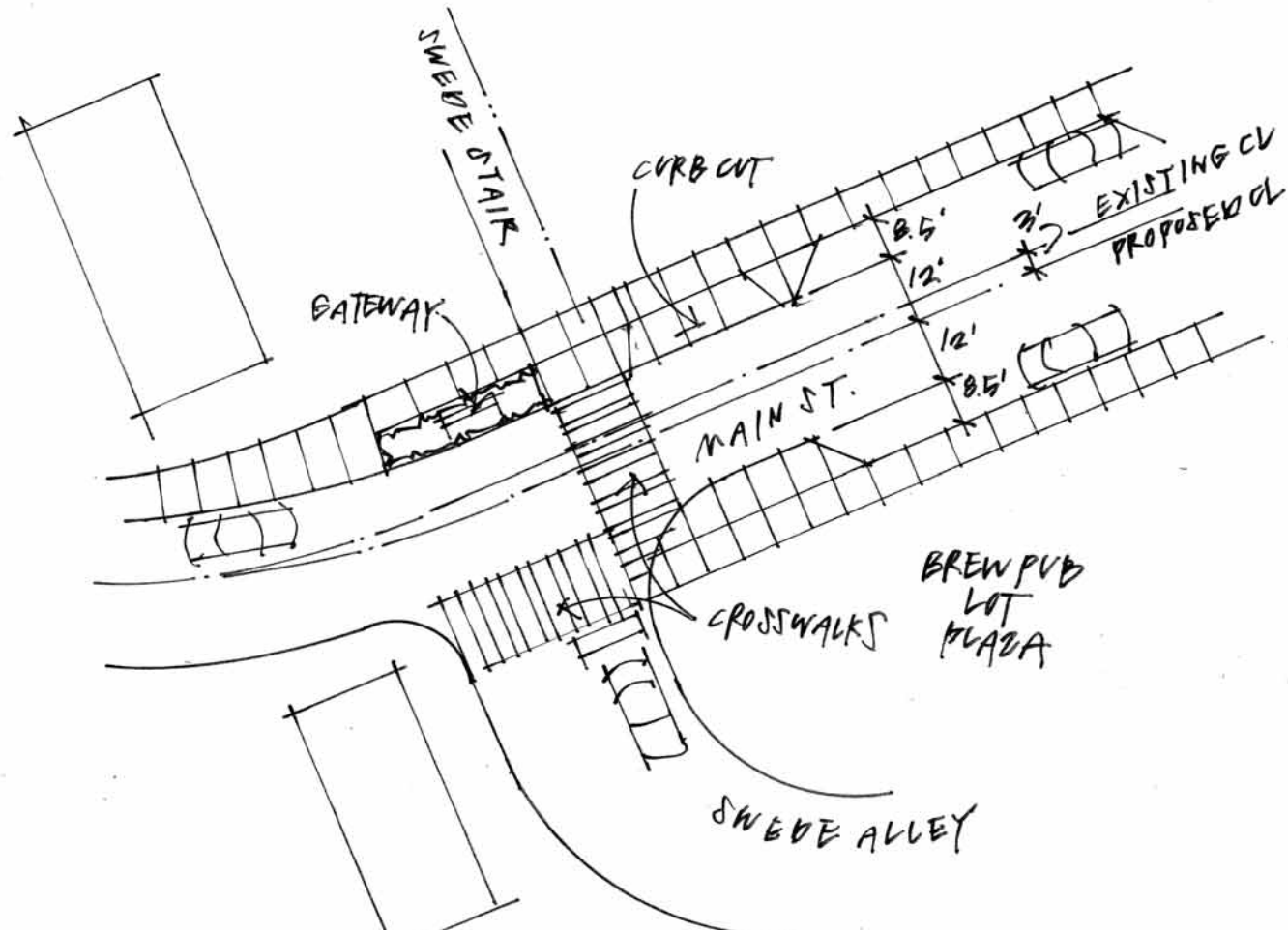


Streetscape

Pedestrian Enhancements/Bulbout Locations



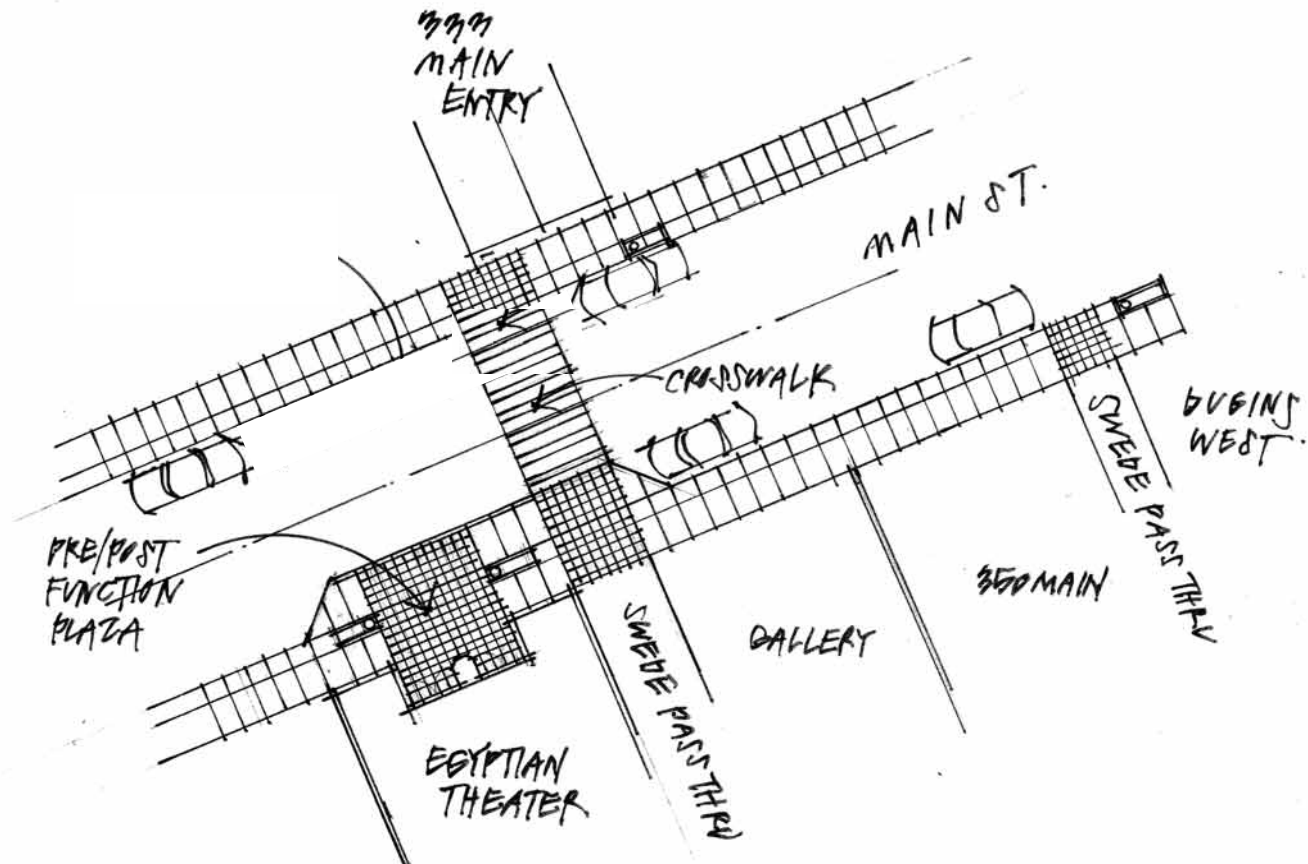
Streetscape – Pedestrian Enhancements



Main Street/Swede Alley Enhancements



Streetscape – Pedestrian Enhancements



Main Street/Egyptian Enhancements

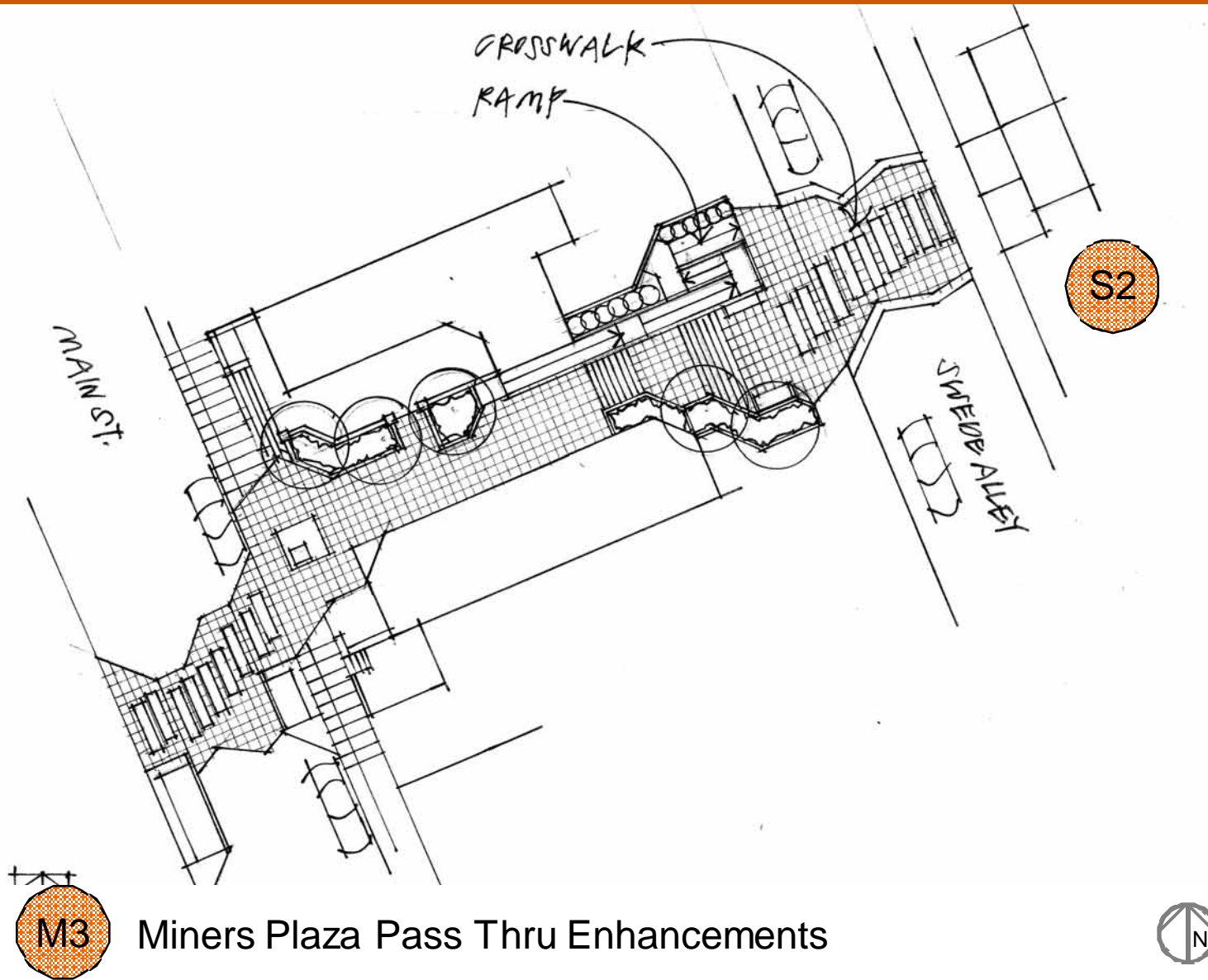


Streetscape – Pedestrian Enhancements



Main Street/Egyptian Enhancements

Streetscape – Pedestrian Enhancements

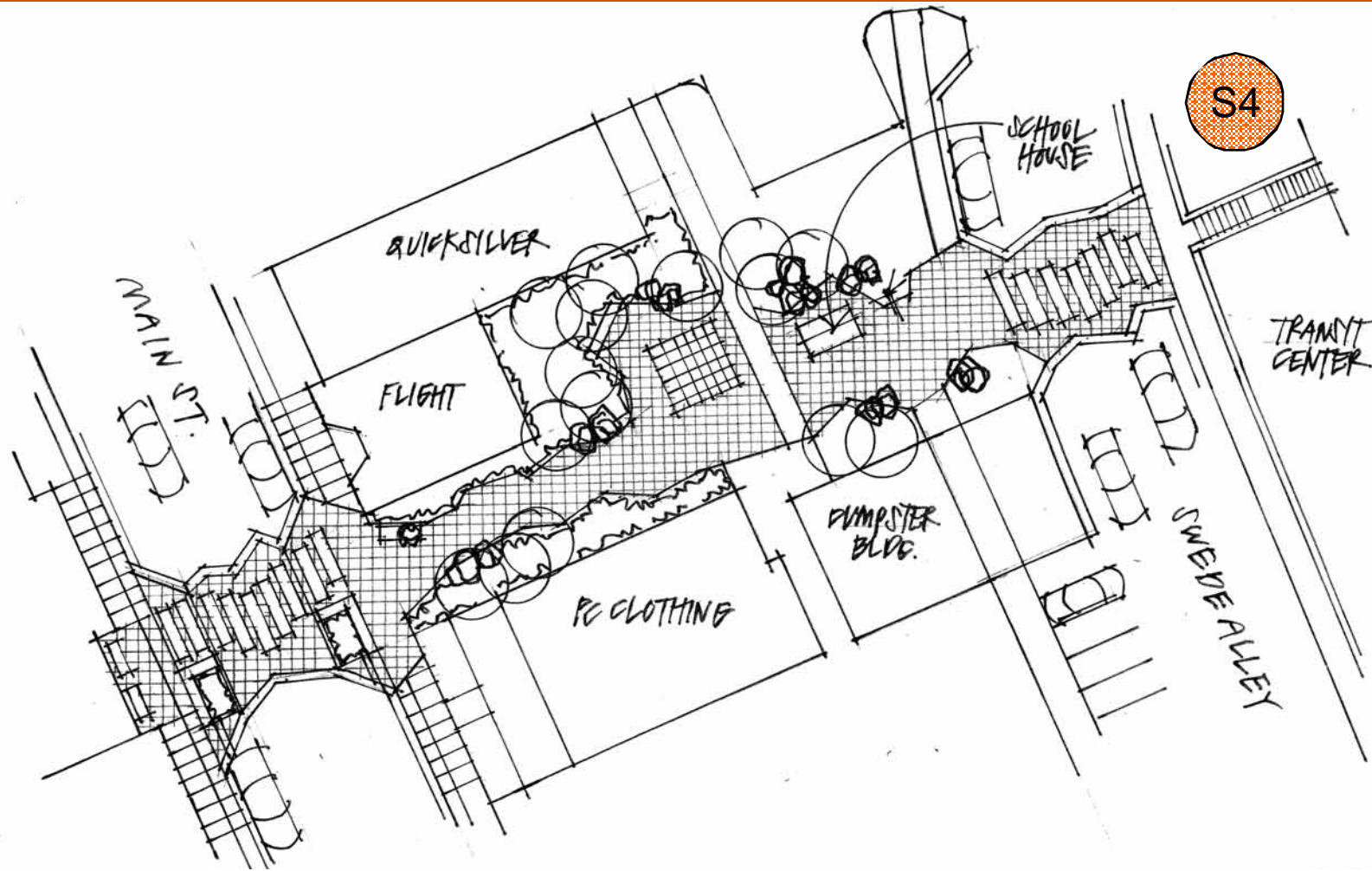


Miners Plaza Pass Thru Enhancements

Streetscape – Pedestrian Enhancements



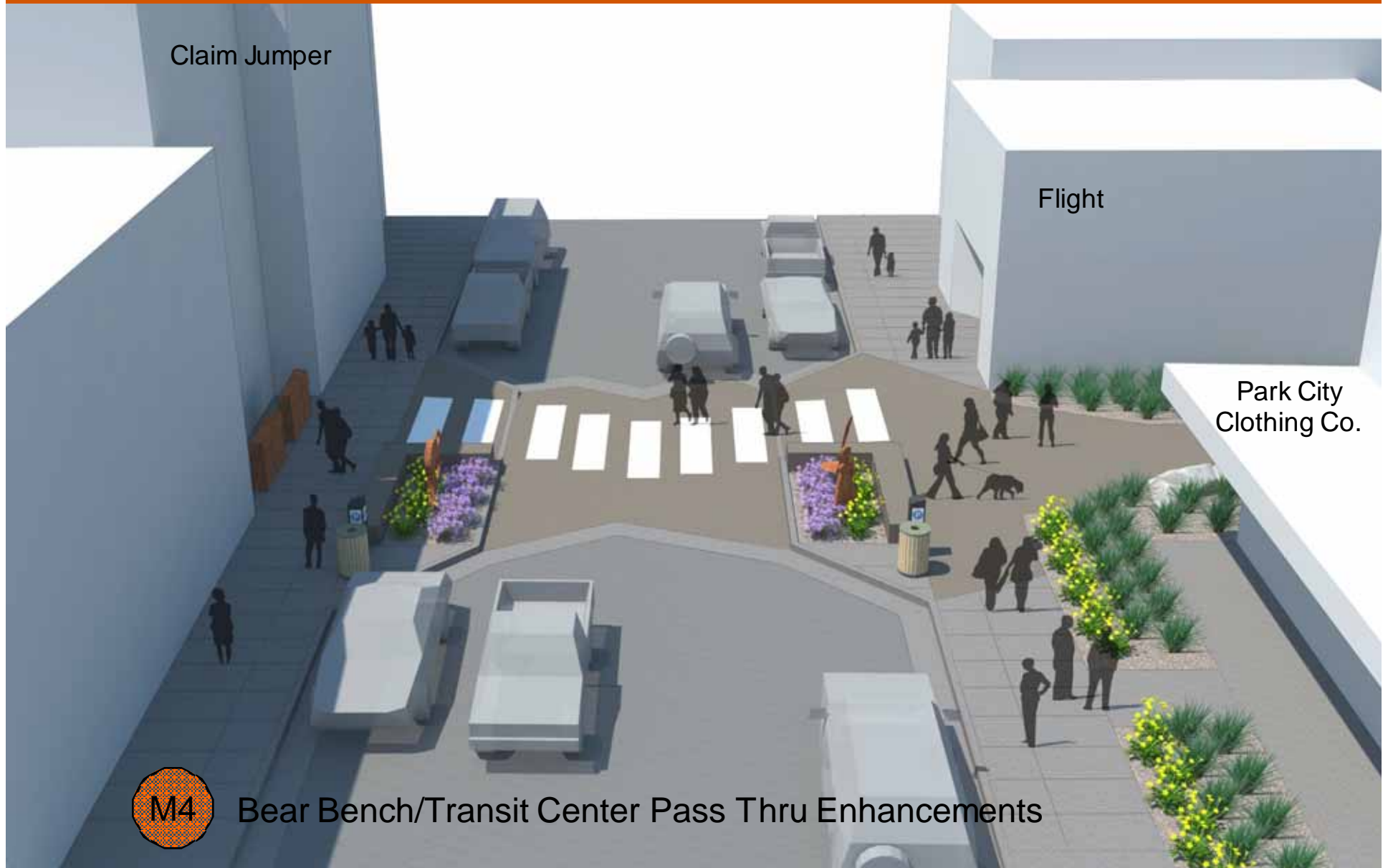
Streetscape – Pedestrian Enhancements



Bear Bench/Transit Center Pass Thru Enhancements



Streetscape – Pedestrian Enhancements



Streetscape – Pedestrian Enhancements



M4

Bear Bench/Transit Center Pass Thru Enhancements



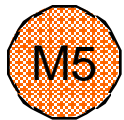
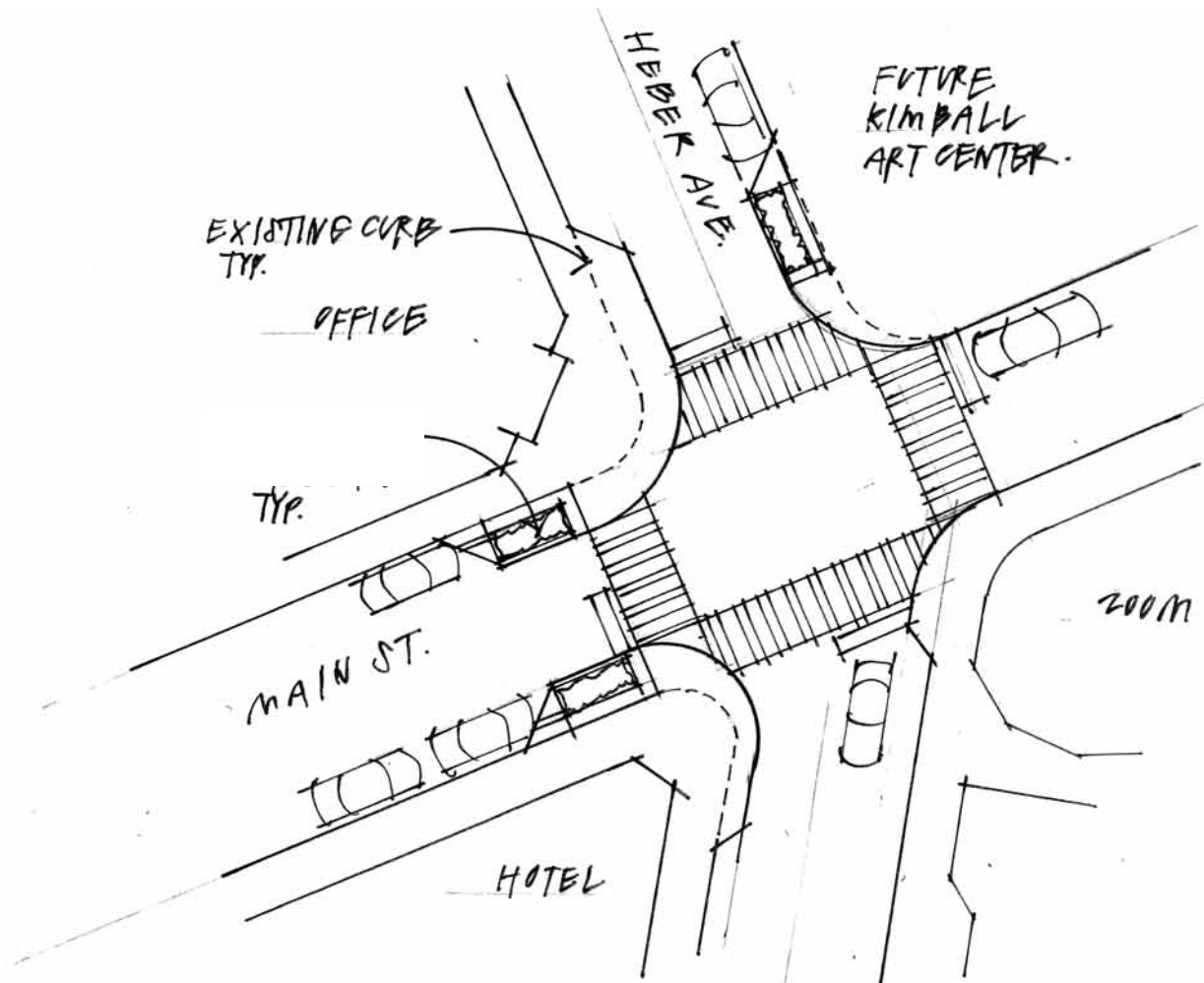
Historic Park City Enhancement Plan
Park City, UT



Public Open House Presentation
April 3, 2012



Streetscape – Pedestrian Enhancements



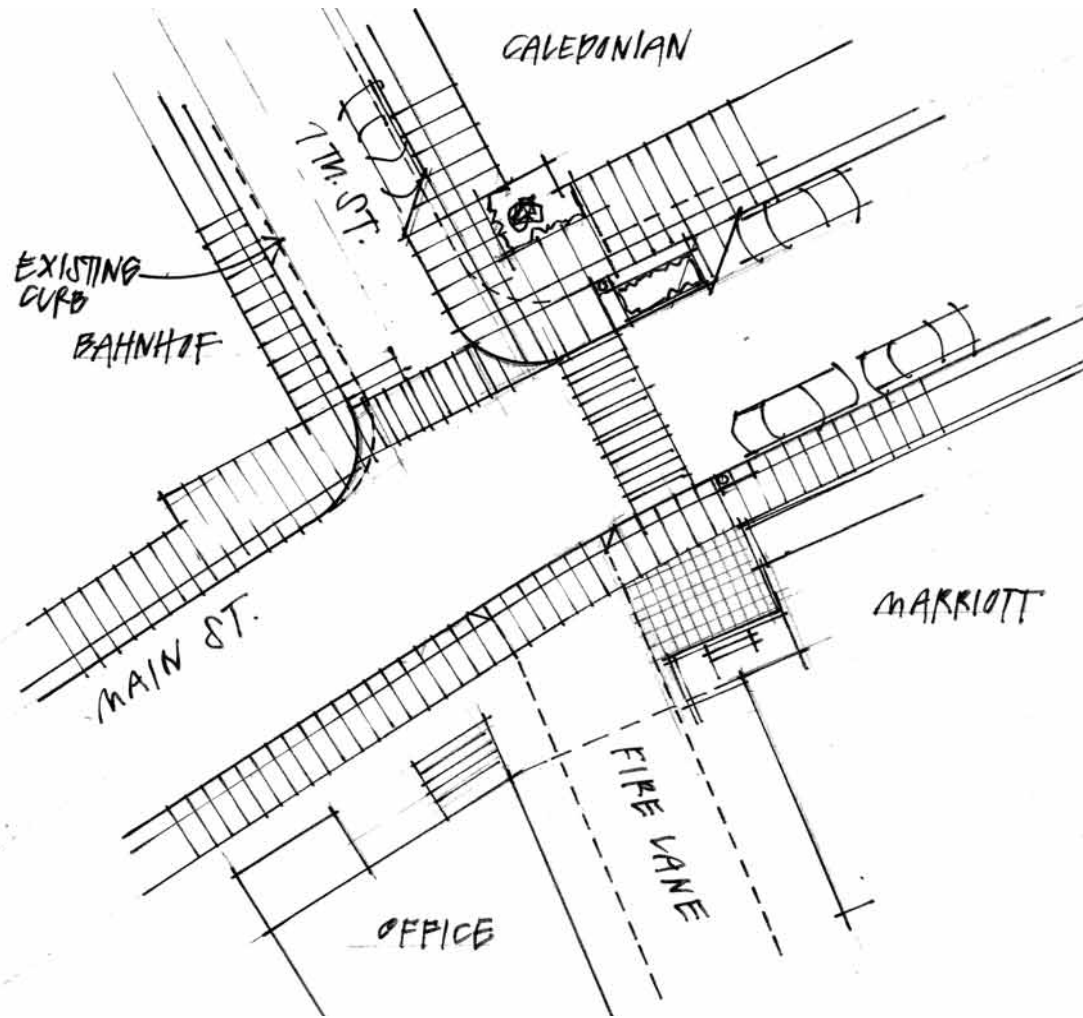
Main Street/Heber Avenue Enhancements



Streetscape – Pedestrian Enhancements



Streetscape – Pedestrian Enhancements



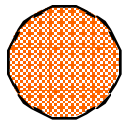
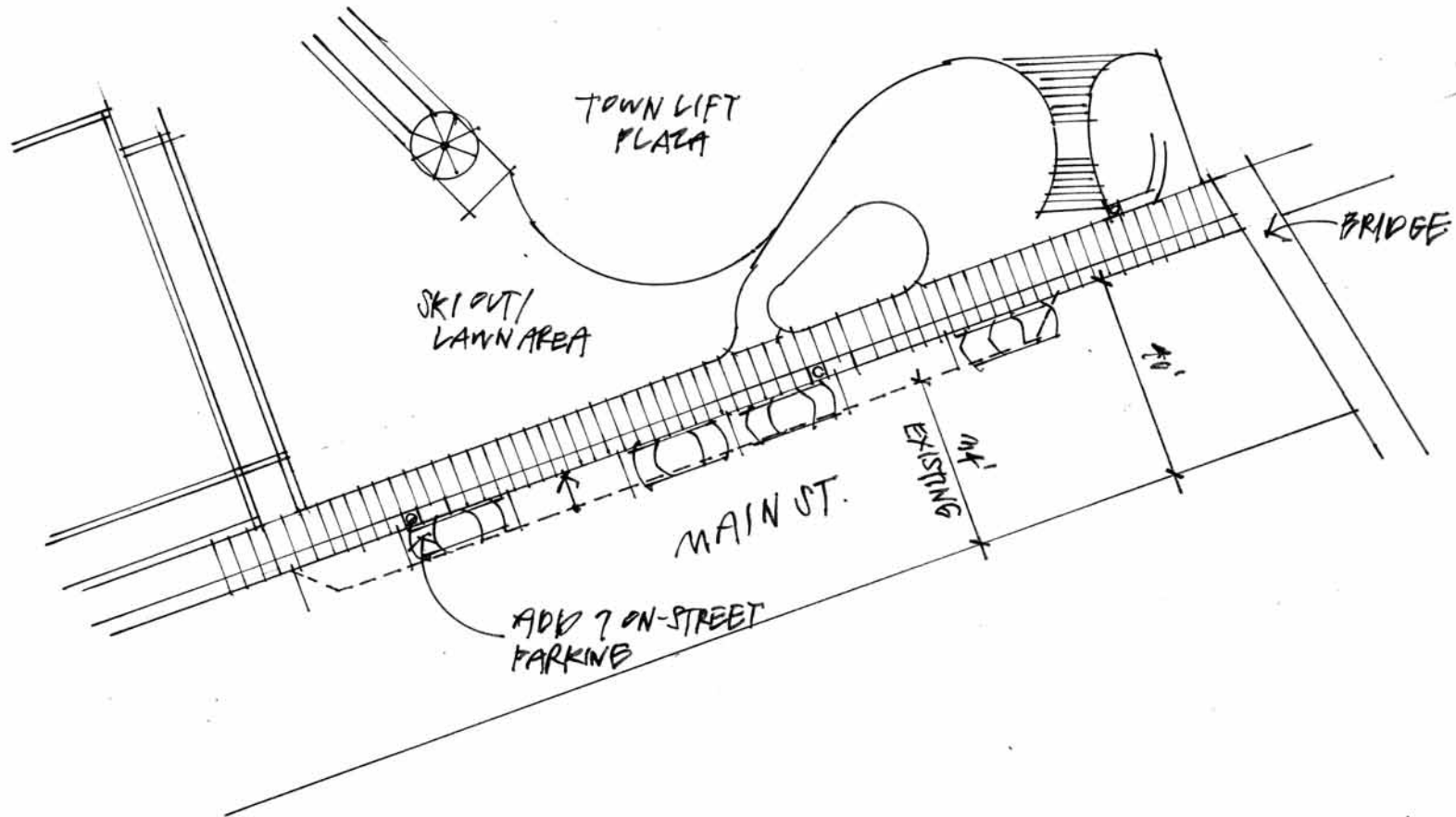
Main Street/7th Street Enhancements



Streetscape – Pedestrian Enhancements



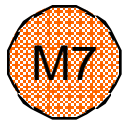
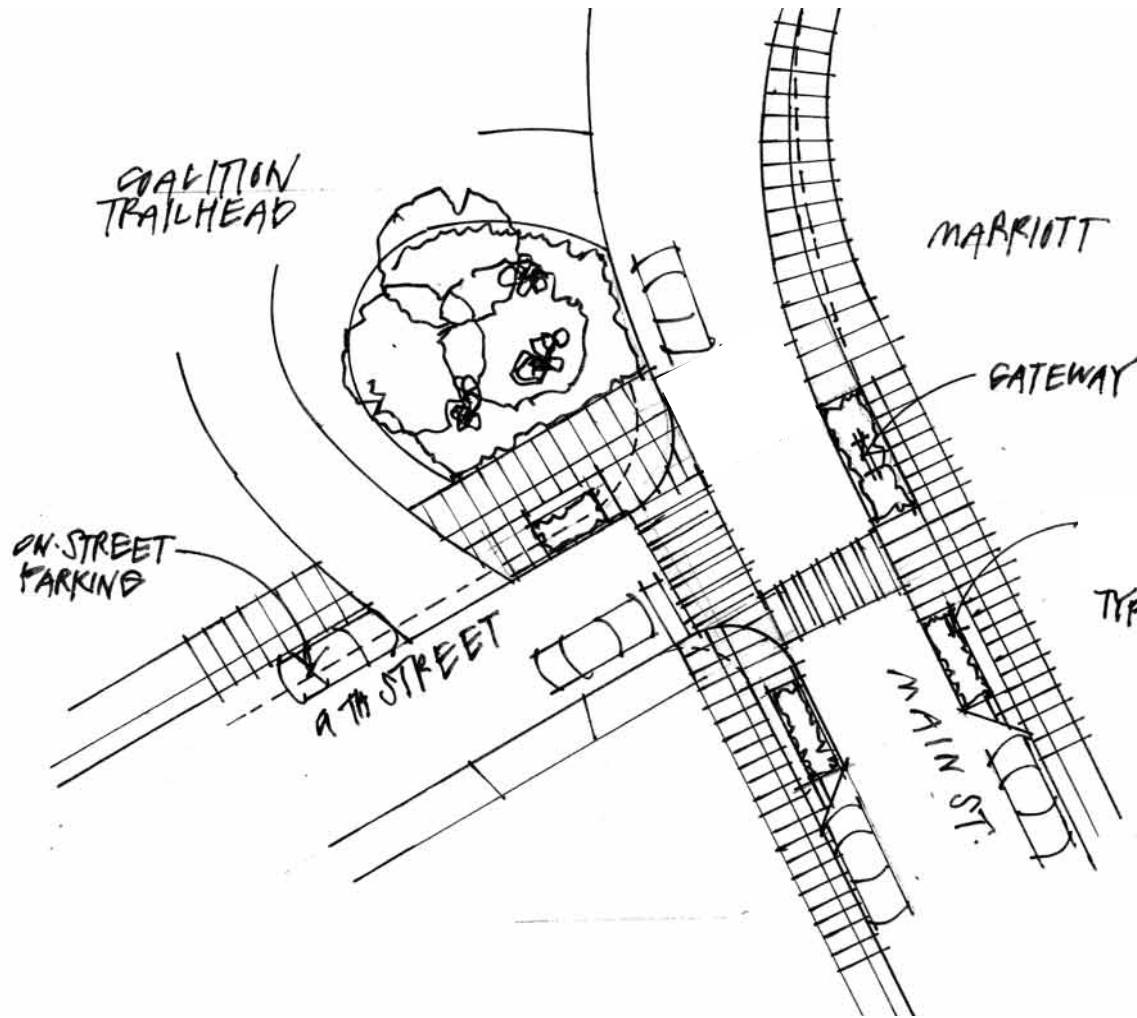
Streetscape – Pedestrian Enhancements



Main Street/Town Lift Plaza Enhancements



Streetscape – Pedestrian Enhancements



Main Street/9th Street Enhancements



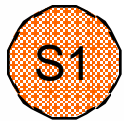
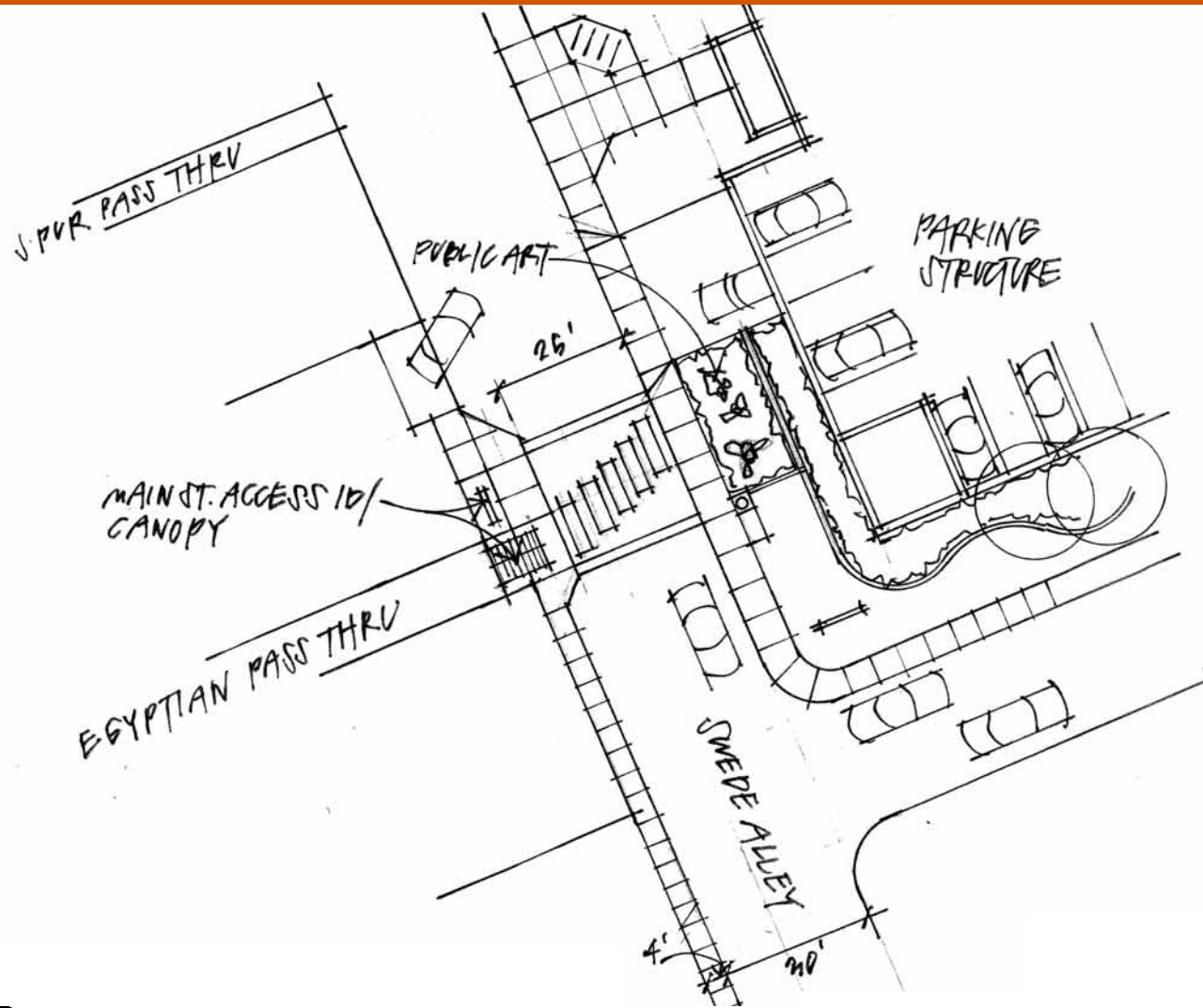
Historic Park City Enhancement Plan
Park City, UT



Public Open House Presentation
April 3, 2012



Streetscape – Pedestrian Enhancements



Swede Alley/Egyptian Pass Thru Enhancements



Streetscape – Pedestrian Enhancements



S1 Swede Alley/Egyptian Pass Thru Enhancements

Streetscape – Pedestrian Enhancements



S3

Swede Alley/City Hall Enhancements



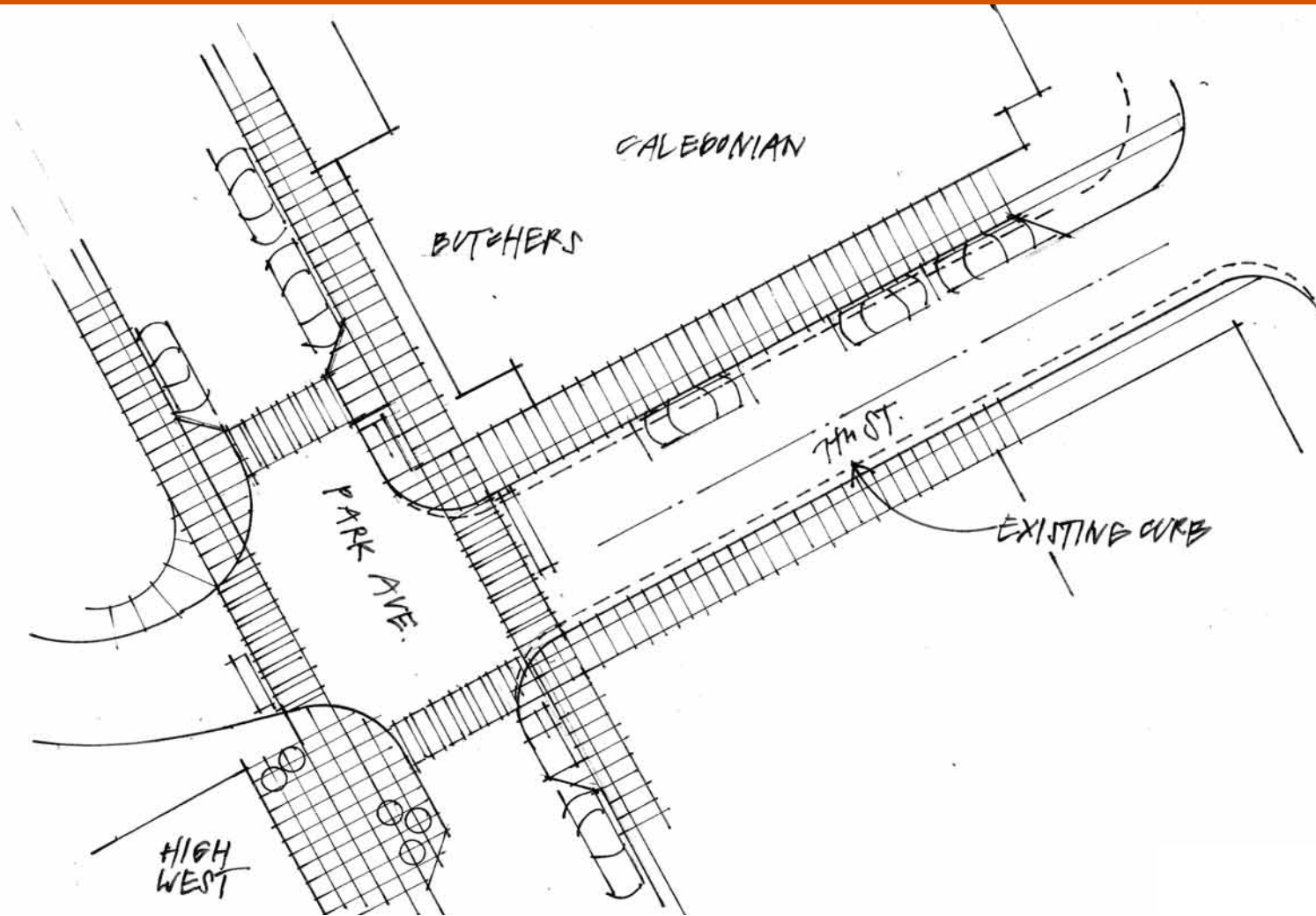
Historic Park City Enhancement Plan
Park City, UT



Public Open House Presentation
April 3, 2012



Streetscape – Pedestrian Enhancements



P2 Park Avenue/7th Street Enhancements



Streetscape – 4th Street Enhancements



Historic Park City Enhancement Plan
Park City, UT



Public Open House Presentation
April 3, 2012



Streetscape – 4th Street Enhancements



Historic Park City Enhancement Plan
Park City, UT



Public Open House Presentation
April 3, 2012



Plazas...a complimentary network of experiences

1 Brew Pub Plaza

- Create an anchor and destination at the top of Main Street
- Celebrate the snow sports and year-round adventure recreation industry including Olympic Legacy
- Emphasis on entertainment and special events
- Create revenue generating uses and activities
- Link to the heritage and history of the site

2 Miners Plaza

- The “family room” of Main Street
- Celebrate the mining industry through uses of materials, design features and public art
- Create a casual yet flexible atmosphere for day-to-day use and special events
- Emphasize connectivity to Swede Alley/parking structure
- Improve safety through enhanced lighting

3 Coalition Park Trailhead

- Passive and park-like respecting the conservation easement
- Act as a gateway and local/regional trailhead for the Historic District
- Celebrate our recognized biking/hiking culture
- Provide children and families with location to experience biking/hiking

4 Schruers Centennial Plaza

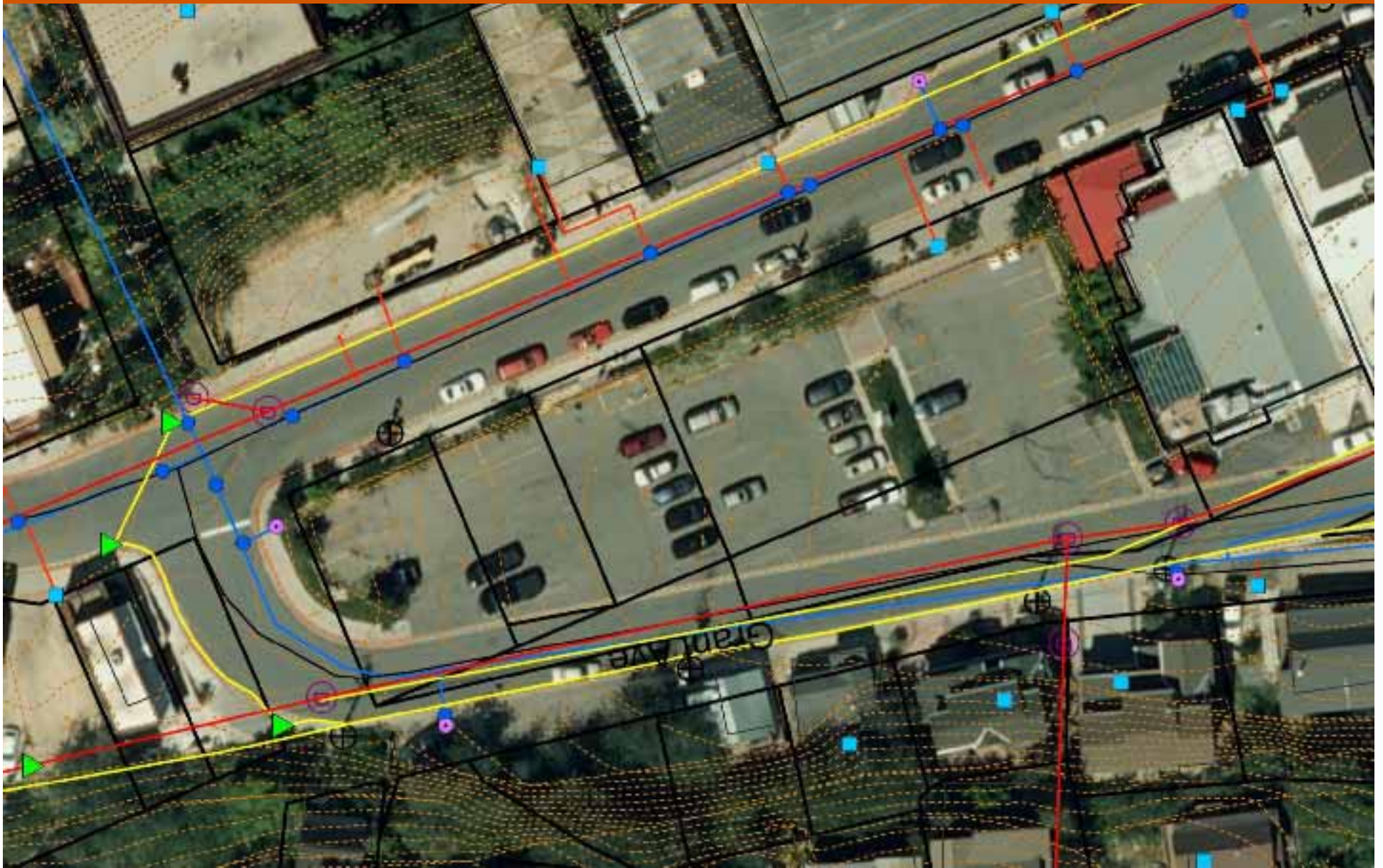
- Enhance and provide a niche resting spot along the “bread crumb” trail of experiences
- Emphasize connectivity and access for users to the West
- Celebrate the heroes of our community

5 Historic Wall/City Hall

- Provide a discovered and passive connection to place by showcasing the historic wall
- Create civic presence, identity and connectivity for City Hall in the Main Street District
- Promote local commitment to arts and culture through integration of public art



Brew Pub Plaza – Option One



Historic Park City Enhancement Plan
Park City, UT



Public Open House Presentation
April 3, 2012



Brew Pub Plaza – Option One



Historic Park City Enhancement Plan
Park City, UT



Public Open House Presentation
April 3, 2012



Brew Pub Plaza – Option One



Historic Park City Enhancement Plan
Park City, UT



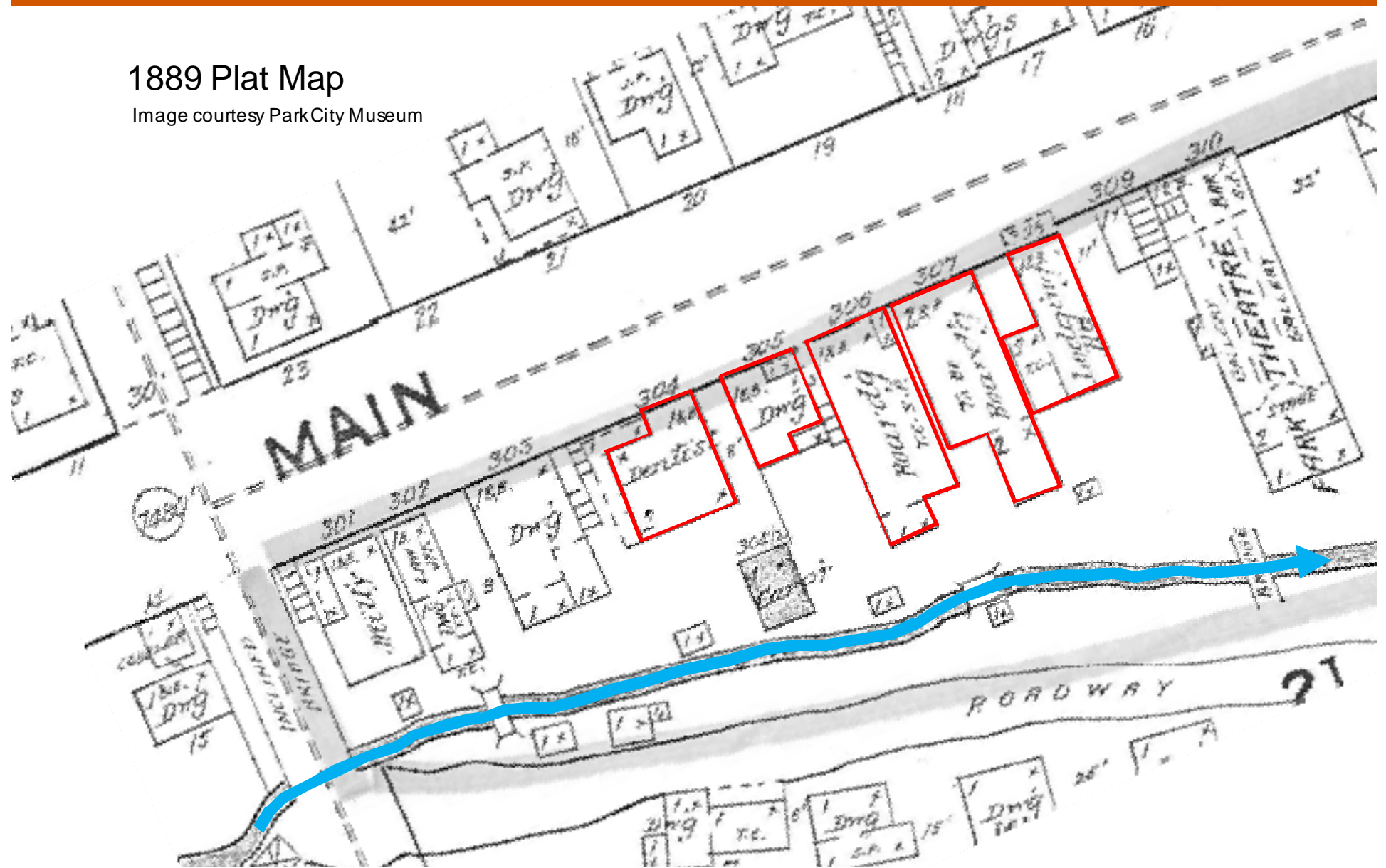
Public Open House Presentation
April 3, 2012



Brew Pub Plaza – Option One

1889 Plat Map

Image courtesy Park City Museum



Brew Pub Plaza – Option One



Historic Park City Enhancement Plan
Park City, UT



Public Open House Presentation
April 3, 2012



Brew Pub Plaza



Historic Park City Enhancement Plan
Park City, UT



Public Open House Presentation
April 3, 2012



Brew Pub Plaza



Historic Park City Enhancement Plan
Park City, UT



Public Open House Presentation
April 3, 2012



Brew Pub Plaza



Multi-Purpose Plaza

Swede Alley

Parking Entry/Exit



Historic Park City Enhancement Plan
Park City, UT



Public Open House Presentation
April 3, 2012



Brew Pub Plaza



Historic Park City Enhancement Plan
Park City, UT



Public Open House Presentation
April 3, 2012



Brew Pub Plaza



Historic Park City Enhancement Plan
Park City, UT



Public Open House Presentation
April 3, 2012



Brew Pub Plaza – Flexibility



Brew Pub Plaza – Precedence



Historic Park City Enhancement Plan
Park City, UT



Public Open House Presentation
April 3, 2012



Brew Pub Plaza – Option Two



Historic Park City Enhancement Plan
Park City, UT



Public Open House Presentation
April 3, 2012



Miners Plaza



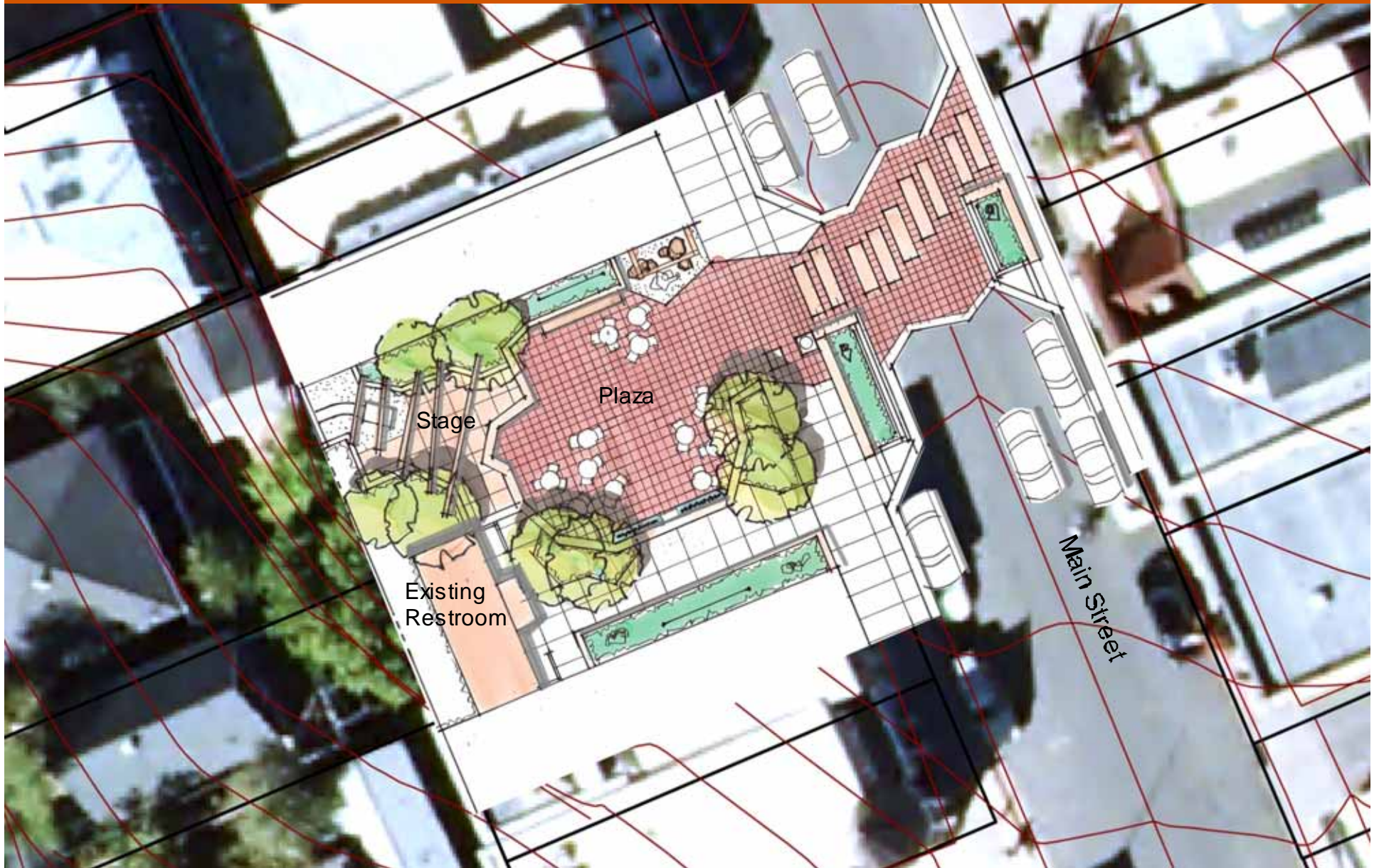
Historic Park City Enhancement Plan
Park City, UT



Public Open House Presentation
April 3, 2012



Miners Plaza



Historic Park City Enhancement Plan
Park City, UT



Public Open House Presentation
April 3, 2012



Miners Plaza



Historic Park City Enhancement Plan
Park City, UT



Public Open House Presentation
April 3, 2012



Miners Plaza



Historic Park City Enhancement Plan
Park City, UT



Public Open House Presentation
April 3, 2012



Miners Plaza



Historic Park City Enhancement Plan
Park City, UT



Public Open House Presentation
April 3, 2012



Miners Plaza



Historic Park City Enhancement Plan
Park City, UT



Public Open House Presentation
April 3, 2012



Miners Plaza



Historic Park City Enhancement Plan
Park City, UT



Public Open House Presentation
April 3, 2012



Miners Plaza



Historic Park City Enhancement Plan
Park City, UT



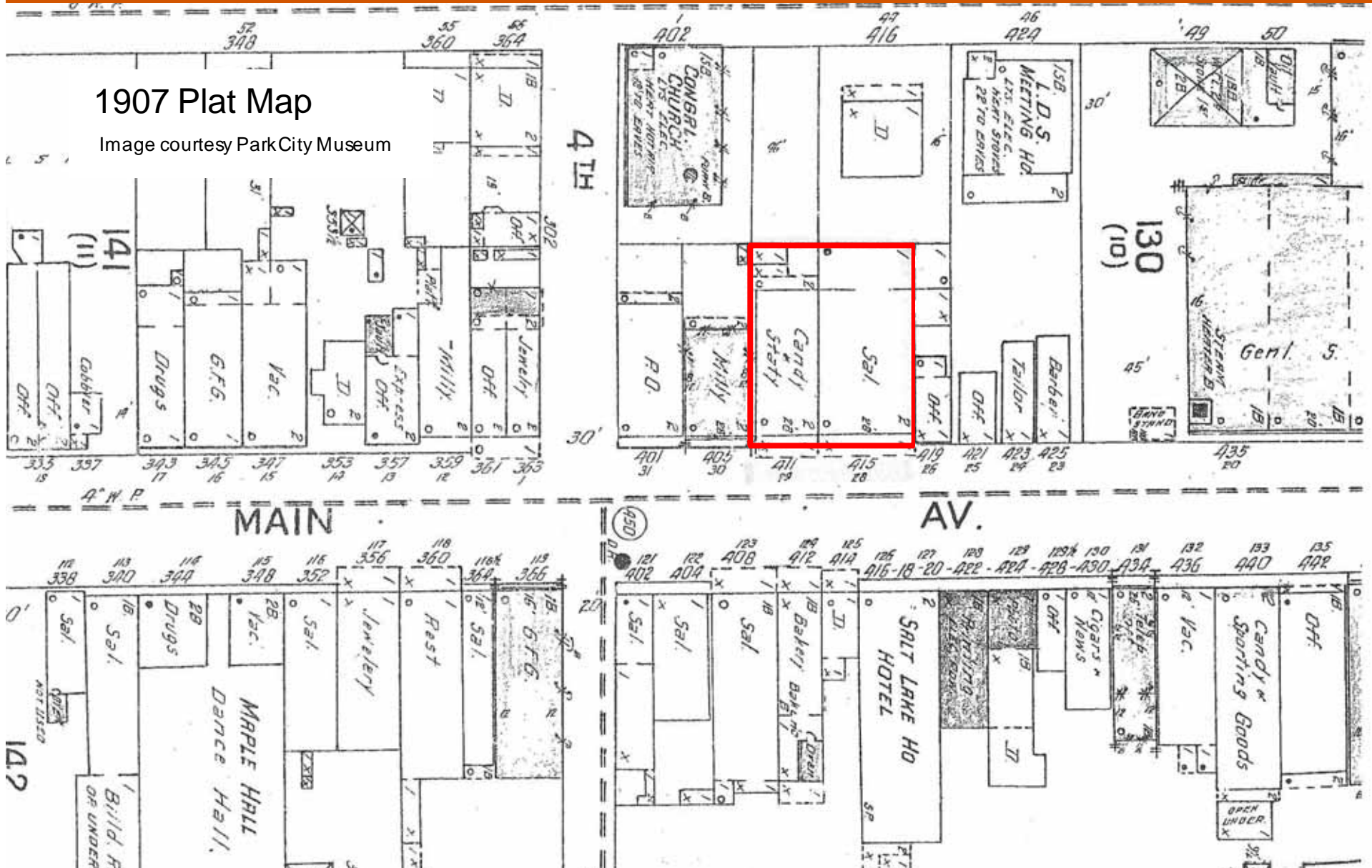
Public Open House Presentation
April 3, 2012



Miners Plaza

1907 Plat Map

Image courtesy Park City Museum



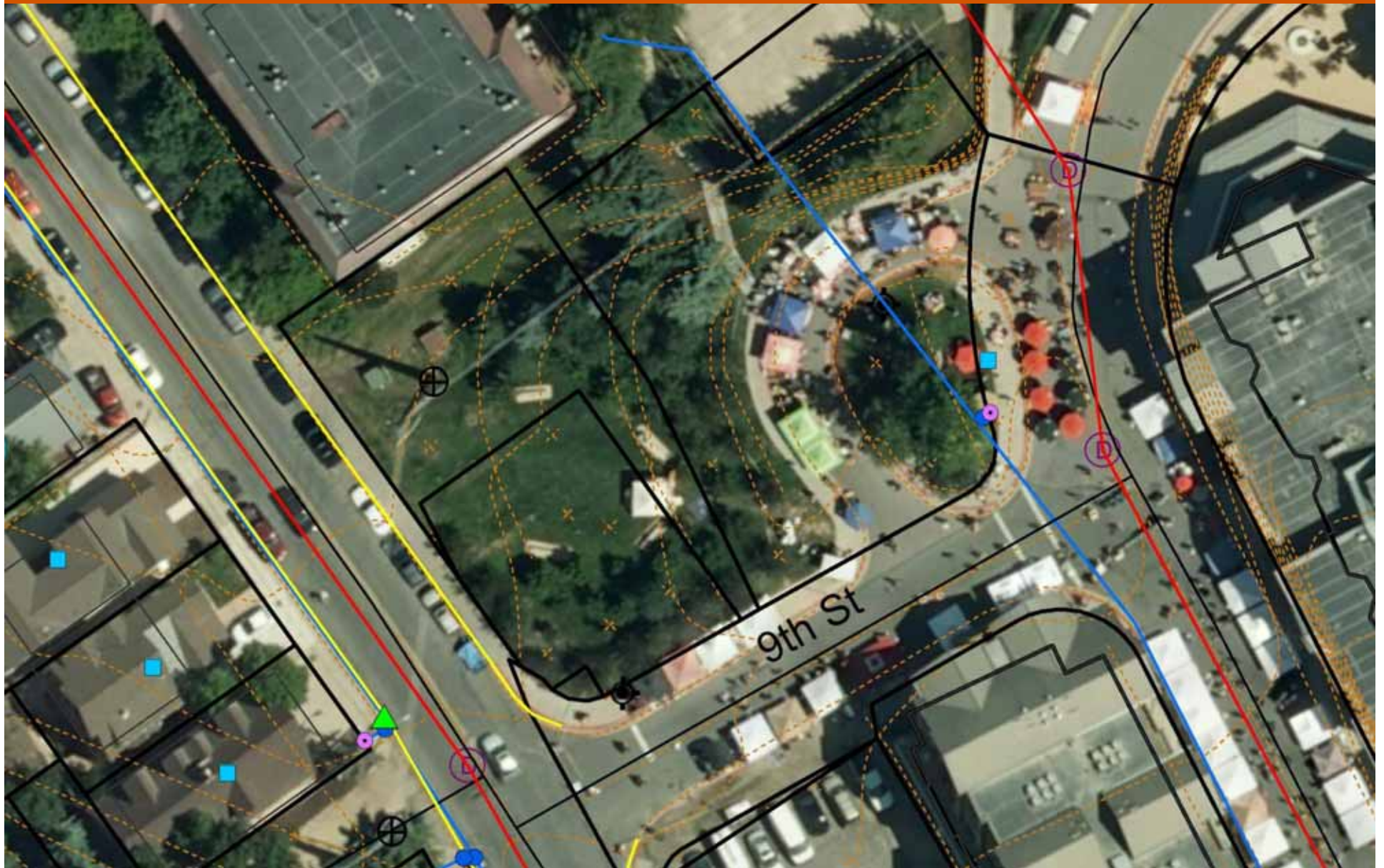
Historic Park City Enhancement Plan
Park City, UT



Public Open House Presentation
April 3, 2012



Coalition Trailhead



Historic Park City Enhancement Plan
Park City, UT



Public Open House Presentation
April 3, 2012



Coalition Trailhead



UP&L Water Tower

Image courtesy Park City Museum



Historic Park City Enhancement Plan
Park City, UT



Public Open House Presentation
April 3, 2012



Coalition Trailhead



Historic Park City Enhancement Plan
Park City, UT



Public Open House Presentation
April 3, 2012



Coalition Trailhead



Main Street



Historic Park City Enhancement Plan
Park City, UT



Public Open House Presentation
April 3, 2012



Coalition Trailhead



9th Street

Main Street



Historic Park City Enhancement Plan
Park City, UT



Public Open House Presentation
April 3, 2012



Coalition Trailhead



Historic Park City Enhancement Plan
Park City, UT



Public Open House Presentation
April 3, 2012



Coalition Trailhead



Historic Park City Enhancement Plan
Park City, UT



Public Open House Presentation
April 3, 2012



Coalition Trailhead



Park Avenue

9th Street



Historic Park City Enhancement Plan
Park City, UT



Public Open House Presentation
April 3, 2012



Coalition Trailhead



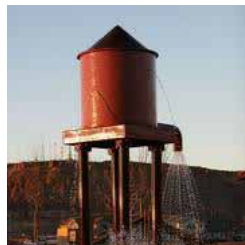
Historic Park City Enhancement Plan
Park City, UT



Public Open House Presentation
April 3, 2012



Coalition Trailhead



Historic Park City Enhancement Plan
Park City, UT



Public Open House Presentation
April 3, 2012



Historic Wall/City Hall

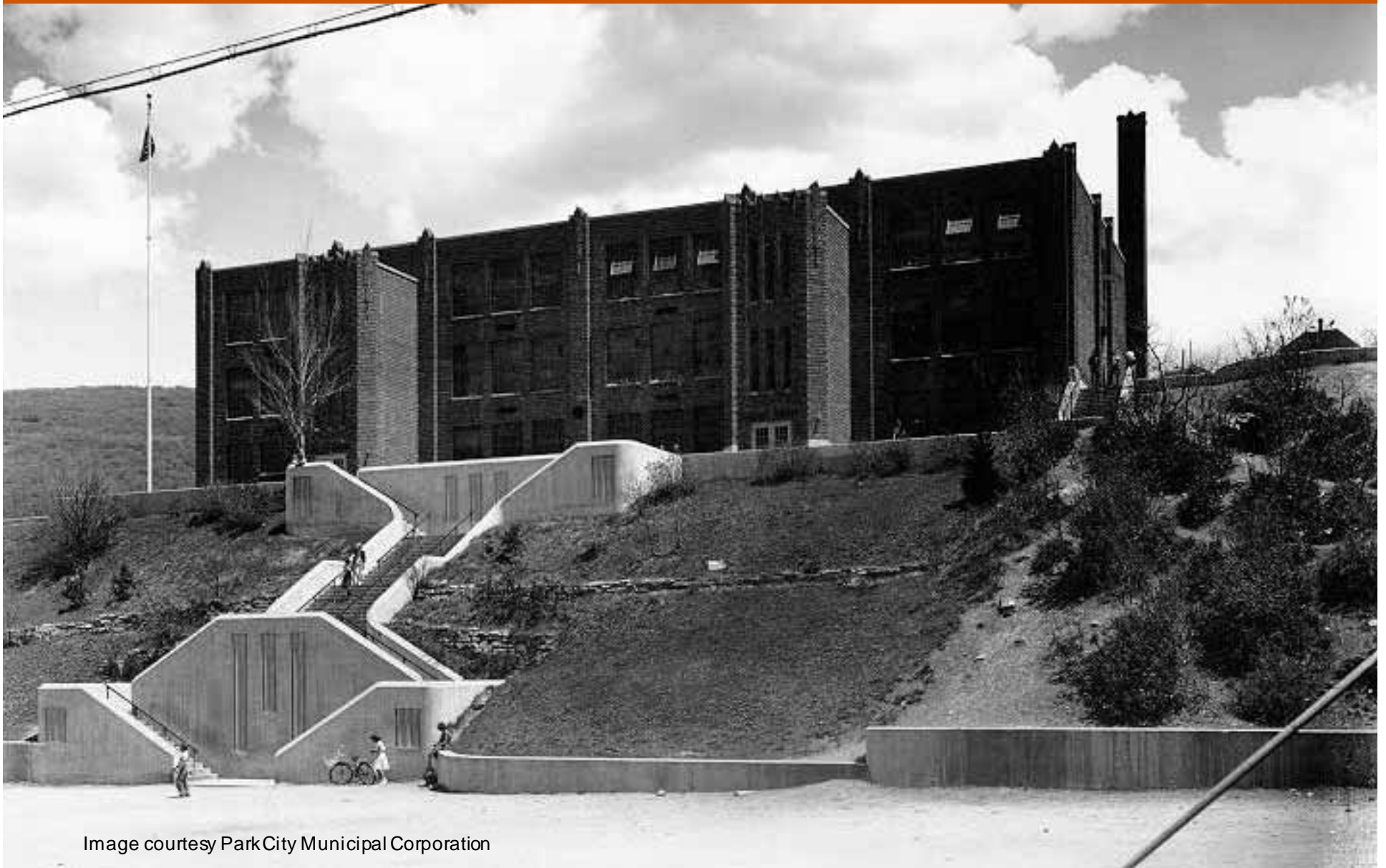


Image courtesy Park City Municipal Corporation



Historic Park City Enhancement Plan
Park City, UT



Public Open House Presentation
April 3, 2012



Historic Wall/City Hall



Historic Park City Enhancement Plan
Park City, UT



Public Open House Presentation
April 3, 2012



Historic Wall/City Hall



Historic Park City Enhancement Plan
Park City, UT



Public Open House Presentation
April 3, 2012



Historic Wall/City Hall Art Walk



Historic Park City Enhancement Plan
Park City, UT



Public Open House Presentation
April 3, 2012



Historic Wall/City Hall



Historic Park City Enhancement Plan
Park City, UT



Public Open House Presentation
April 3, 2012



Historic Wall/City Hall



Historic Park City Enhancement Plan
Park City, UT



Public Open House Presentation
April 3, 2012



Historic Wall/City Hall



Historic Park City Enhancement Plan
Park City, UT



Public Open House Presentation
April 3, 2012



Historic Wall/City Hall



Historic Park City Enhancement Plan
Park City, UT



Public Open House Presentation
April 3, 2012



To enhance the pedestrian experience and encourage residents and visitors to linger, circulate and explore throughout the Historic Park City District.



Historic Park City Enhancement Plan
Park City, UT



Public Open House Presentation
April 3, 2012

