



Red and Green Permits

Sundance Film Festival

January 23-February 2

Changes have been made to ensure pedestrian safety in the Old Town area during this year's Sundance Film Festival. **Outlined below are changes that will affect the use of Red and Green permits in Old Town, Thursday, January 23-Monday, January 27:**

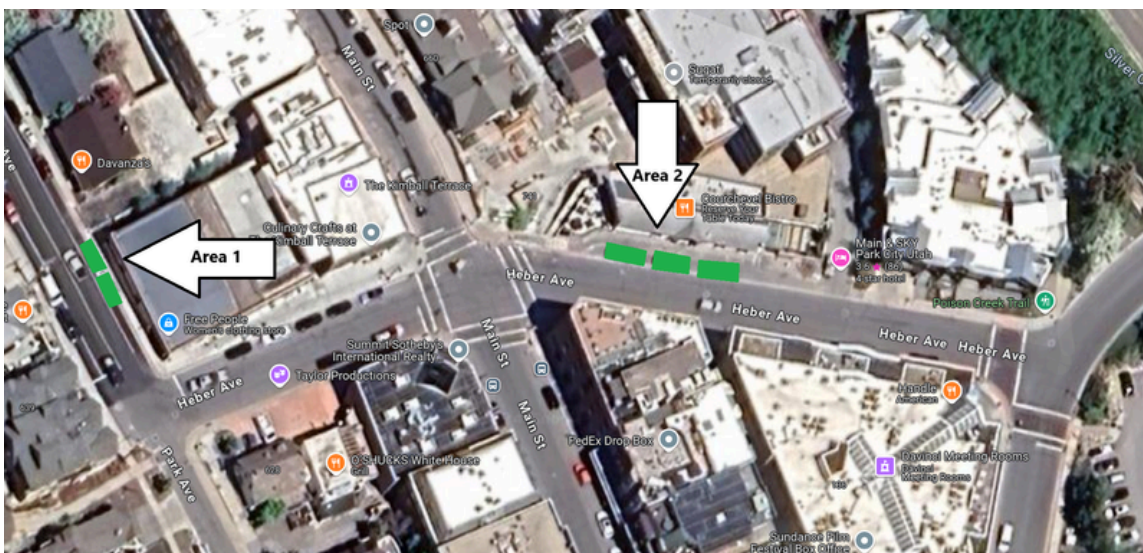
- **NEW THIS YEAR** | Main Street – from Swede Alley to 7th Street, will be pedestrian-only beginning at noon each day.
- Vehicles remaining on Main Street after 11:00 a.m. will be towed.
- These measures will change the parameters of the Red and Green Permits

Red Permits

- Red Permits are for large scale loading in and out.
- The timetable for loading in/out is 3:30 a.m-11:00 a.m.

Green Permits

- There are designated controlled areas for safe, short-term loading access as close as possible each venue.
- Areas will be strictly scheduled and enforced.
- Assigned times may be available to help rotate loading in and out and maintain security.
- Permits must be presented to law enforcement and security personnel to access Swede Alley, Brew Pub, Heber Ave, and Park Ave.
- There are four primary Green Loading Areas designated at various places (outlined in maps below/second page).



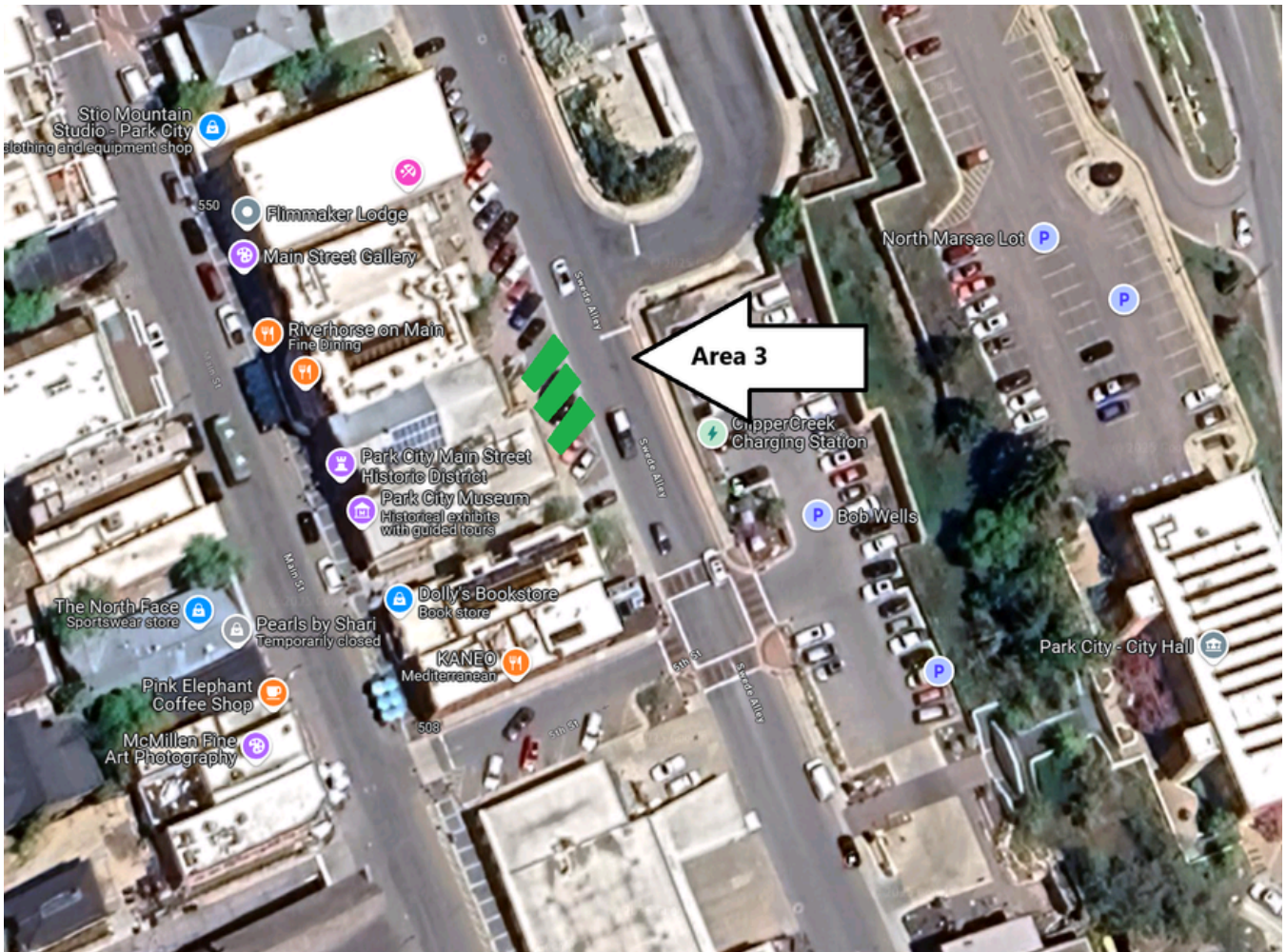
Area 1 | Park Ave near Free People, north of the red curb area.

Area 2 | Heber Avenue in front of Courchevel Bistro.

QUESTIONS? Contact:

Dave Capson, Parking/Transportation Demand Supervisor, 435.615.5372 or david.capson@parkcity.org
Impact Map and Community Guide available at parkcity.org
City Main Line: 435.615.5000 (Monday-Friday 8:00 a.m.-5:00 p.m.)
Si necesita ayuda en español, por favor llame a Stephanie Valdez a 435.615.5201

Area 3 | Swede Alley behind Dolly's Bookstore by the Post Office.



Area 4 | Brew Pub Lot on the south end (out of the way of the Trolley turnaround).

