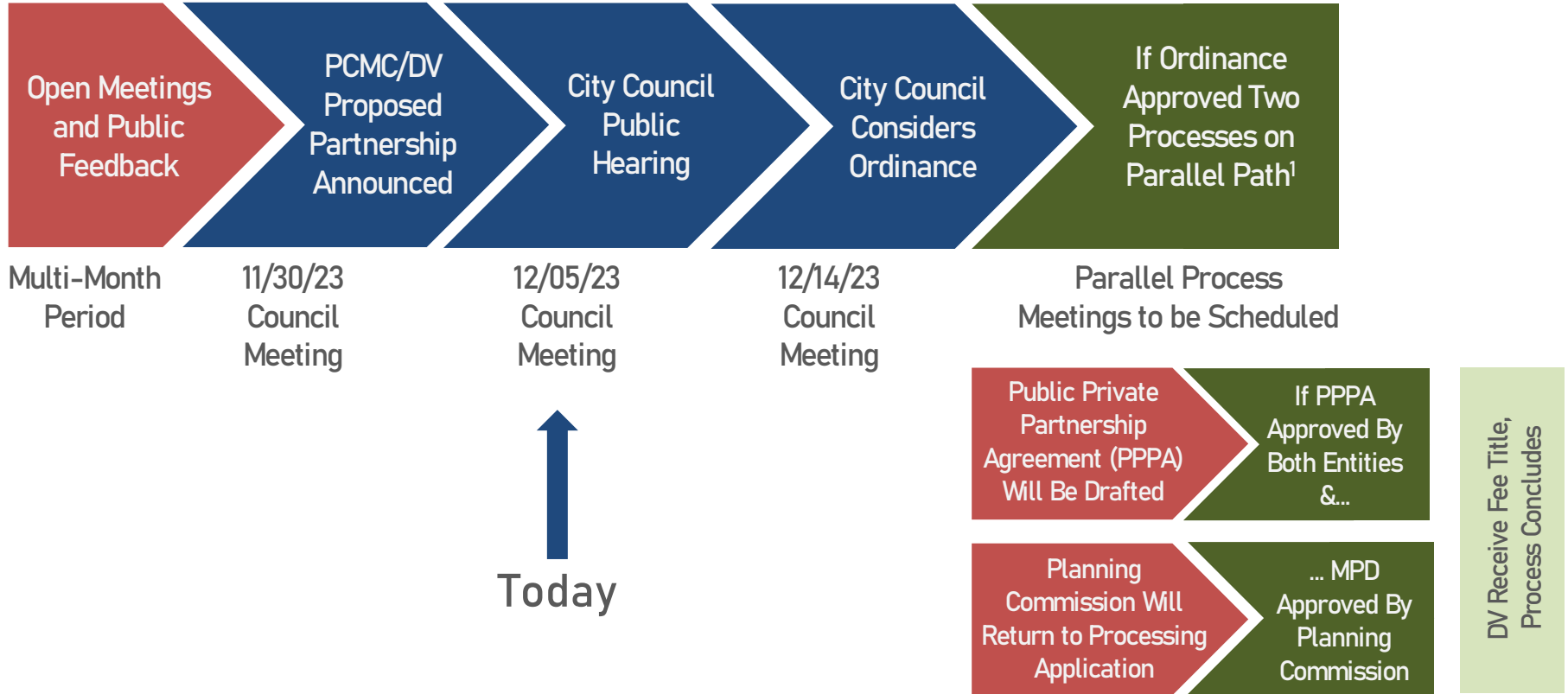

SNOW PARK VILLAGE

PROPOSED PUBLIC-PRIVATE PARTNERSHIP



The Public Process



Source: Park City Municipal Corporation. As of December 2023.

1. PPPA's broad terms to be outlined in ordinance for 12/14/23 should Council direct staff to prepare one.

Proposed Public-Private Partnership

REGIONAL TRANSPORTATION FACILITY

Deer Valley will pay **\$15 million** towards the creation of a **regionally significant transportation and parking facility**. These funds may also be used for affordable housing in connection with that facility. A Management Committee will provide stewardship and fund oversight.

Park City will provide a **\$15 million match** to expand the scale of impact.

As partners, the City and Deer Valley commit to **secure additional public and private partners** to maximize the level of investment and scale of benefit.



Proposed Public-Private Partnership

TRANSPORTATION AND PARKING MITIGATION

Deer Valley will return to the Park City Planning Commission to **seek approval of an updated Master Plan Development (MPD) application** and final Subdivision Plat(s) that include, but are not limited to, the following **transportation and parking mitigation measures**:

- **Integration of Deer Valley's gondola infrastructure with U.S. Highway 40** to distribute resort access more efficiently across the mountain, thereby reducing crowding at key entry points and diverting some of the traffic and parking away from Park City.



Proposed Public-Private Partnership

Integration Details

- Deer Valley will create a **network of gondolas** to connect the Mayflower base area to Snow Park Village.
- To support the expanded gondola network, Deer Valley will seek to **expand maintenance facilities** at Silver Lake.
- Deer Valley will also **expand restaurant/skier services** at Silver Lake.



Proposed Public-Private Partnership

- A **reduction in peak day skier parking by 20%** compared to existing conditions. The hotel, residential, dining, retail, and entertainment parking spaces will be prohibited for day skier parking. Deer Valley will also implement a **paid parking plan** to distribute arrivals and departures more efficiently.
- A **new public transit center** at Deer Valley. Plans for the new transit center will be **reviewed by the Planning Commission** in conjunction with the updated MPD application and final traffic circulation plan.



Proposed Public-Private Partnership

- Ensure **access to Doe Pass Road for emergency, utility, and public vehicles**, with maintenance responsibilities retained by Deer Valley.
- Construction mitigation plans will **maintain public access** to Deer Valley Drive and minimize off-site hauling and construction traffic.



Proposed Public-Private Partnership

AFFORDABLE HOUSING

Deer Valley will build required **affordable housing** (at least 67.1 Affordable Unit Equivalents) **within Park City limits** and with **immediate proximity to public transit**.



Proposed Public-Private Partnership

INFRASTRUCTURE INVESTMENTS

Establishment of a **Public Infrastructure District** (PID) to enable Deer Valley to **invest in public infrastructure at the project site** following MPD approval— including roads, intersections, crosswalks, transit, parking structure, utilities and public pathways.

FAQs



FAQs

What is a Right-Of-Way Vacation?

What is Good Cause?

What is No Material Harm?

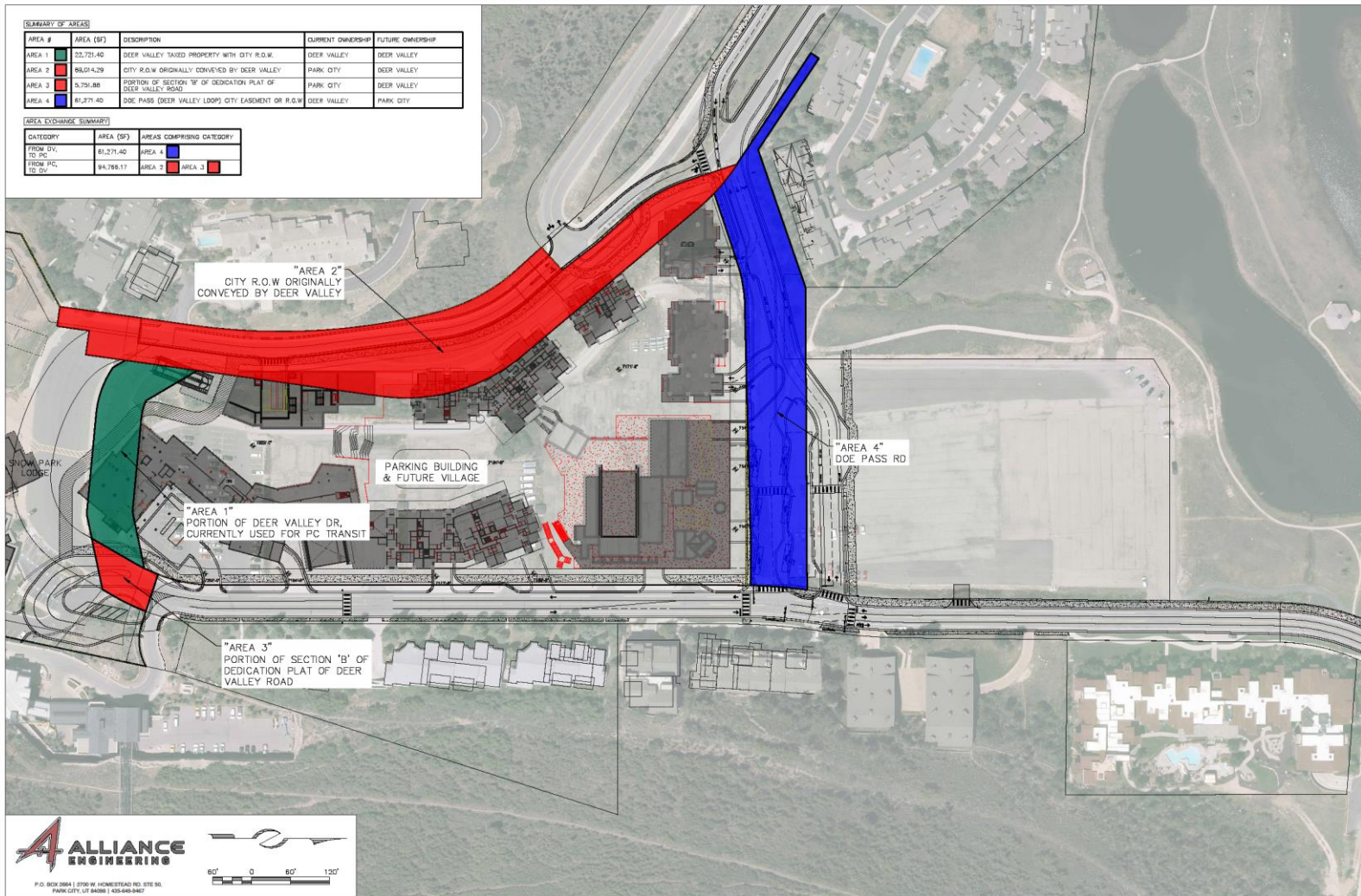


SUMMARY OF AREAS

AREA #	AREA (SF)	DESCRIPTION	CURRENT OWNERSHIP	FUTURE OWNERSHIP
AREA 1	23,721.40	DEER VALLEY TAXED PROPERTY WITH CITY R.O.W.	DEER VALLEY	DEER VALLEY
AREA 2	86,014.29	CITY R.O.W. ORIGINALLY CONVEYED BY DEER VALLEY	PARK CITY	DEER VALLEY
AREA 3	5,751.88	PORTION OF SECTION 'W' OF DEDICATION PLAT OF DEER VALLEY ROAD	PARK CITY	DEER VALLEY
AREA 4	61,871.40	DOE PASS (DEER VALLEY LOOP) CITY EASEMENT OR R.O.W.	DEER VALLEY	PARK CITY

AREA EXCHANGE SUMMARY

CATEGORY	AREA (SF)	AREAS COMPRISING CATEGORY
FROM DV TO PC	61,271.40	AREA 4
FROM PC TO DV	94,768.17	AREA 2, AREA 3



FAQs

**Is Deer Valley's application still active,
under the definition provided in LMC
15-15-1?**



FAQs

- **I heard Deer Valley or the City is asking for land from HOAs. Is this true?**
- **Does the proposed right-of-way vacation impede emergency access?**
- **Are traffic signals required on Deer Valley Drive and why?**

FAQs

- **Should the City require a new independent traffic study before voting on the Vacation Petition?**
- **How is the City addressing the increased traffic and circulation concerns expressed by the public that will result from the project?**