



NOTICE: Defensible Space Work Scheduled to Begin August 2023

Park City Municipal has contracted Alpine Forestry to conduct defensible space work on City-owned property in the southern and eastern areas of Old Town. Details are as follows:

Schedule: Approximately August 22 to September 22, 2023 (no work on Sundays).

What is defensible space?

- The buffer created between a structure and grass, trees, shrubs, or any wildland area that surrounds it.

Why perform this work?

- Park City lies within the Wildland Urban interface – this means conditions are conducive to a large-scale wildland fire event, thereby posing a significant threat to human life and/or property.
- Defensible space is needed to slow or stop the spread of wildfire.
- Defensible space helps protect your home from catching fire – creating a buffer, either from embers, direct flame contact, or radiant heat.
- Proper defensible space also provides firefighters with a safe area to work in to defend your home.

What about local wildlife and vegetation?

- According to the [2022 wildlife assessment](#) performed by Sageland Collaborative, it is recommended to avoid any wildfire mitigation activities during the breeding season, which spans from May through July.
- Forests in the region have adapted to regular intervals of disturbance, such as wildfire. In absence of these natural disturbances, vegetation communities have changed and sometimes to the detriment of wildlife – the work performed aims to re-enact positive effects of naturally occurring wildfires.

What to Expect:

- Crews running equipment, between 8:00 a.m.-5:00 p.m. on workdays, except Sundays.
- Vehicles parked on the roadside near work sites.
- Woodchippers operating between 8:00 a.m.-5:00 p.m. on workdays, except Sundays.
- Potential for temporary trail closures in the Rossie Hill and Prospect Road areas.

What it Will Look Like:



Locations: All priority and general areas (noted on the map on the attached)

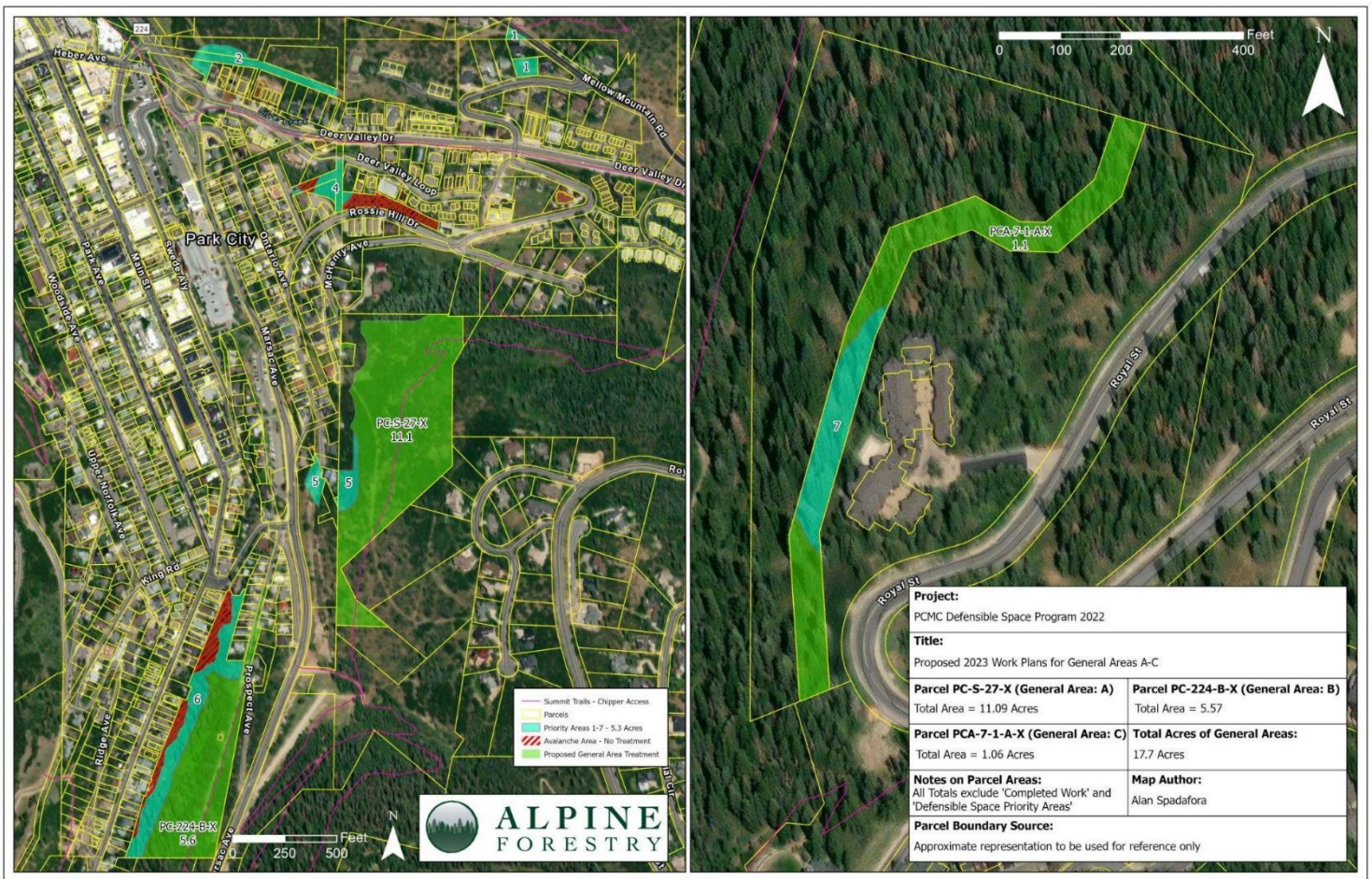
Want to be notified of future projects in Forest Health and Wildfire Mitigation?

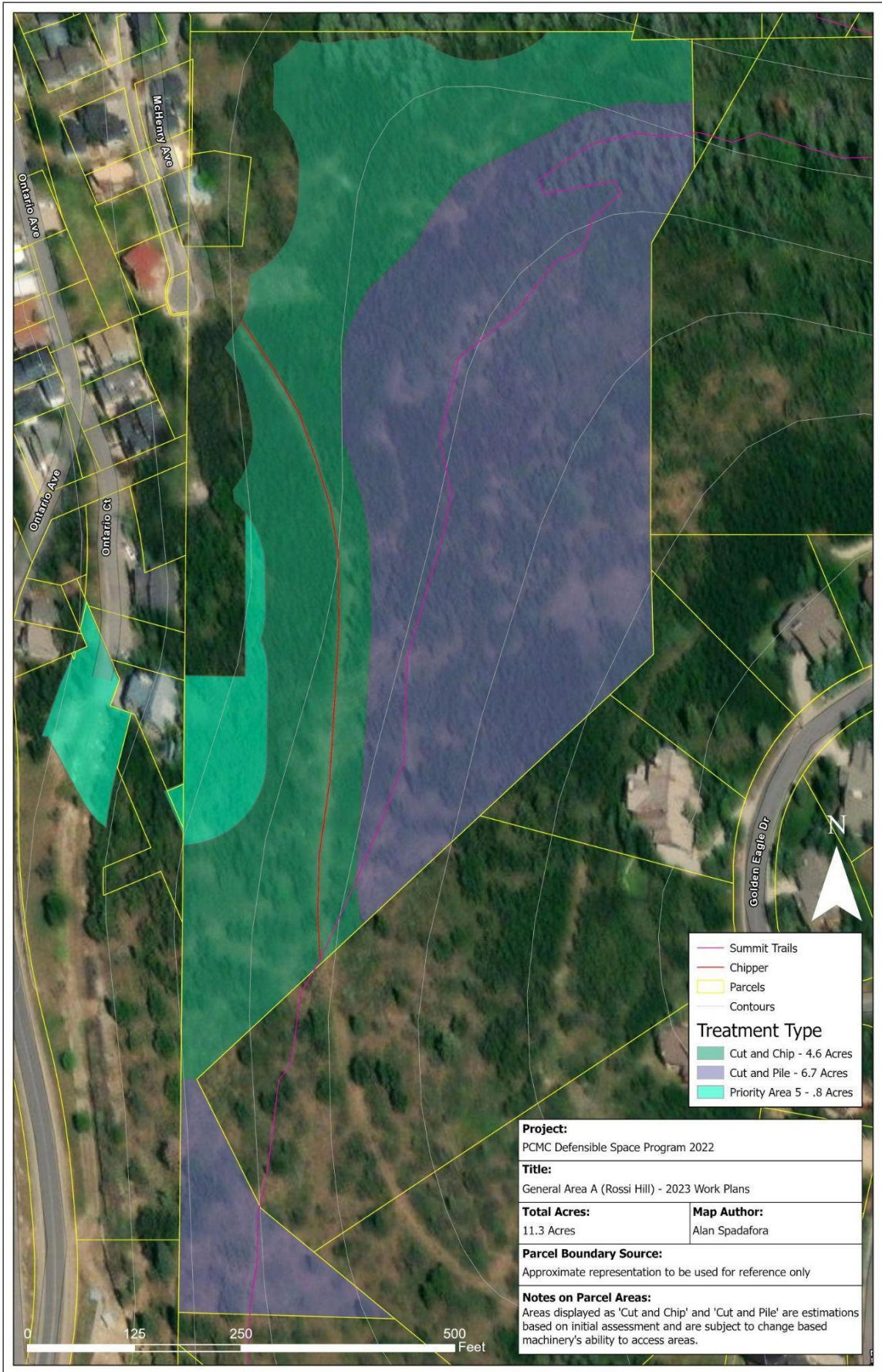
- Visit: www.parkcity.org/how-do-i/sign-up-for-enotifications

Project Contact

Logan Jones, Trails & Open Space Coordinator | logan.jones@parkcity.org | 435-615-5176

Maps of Work Areas



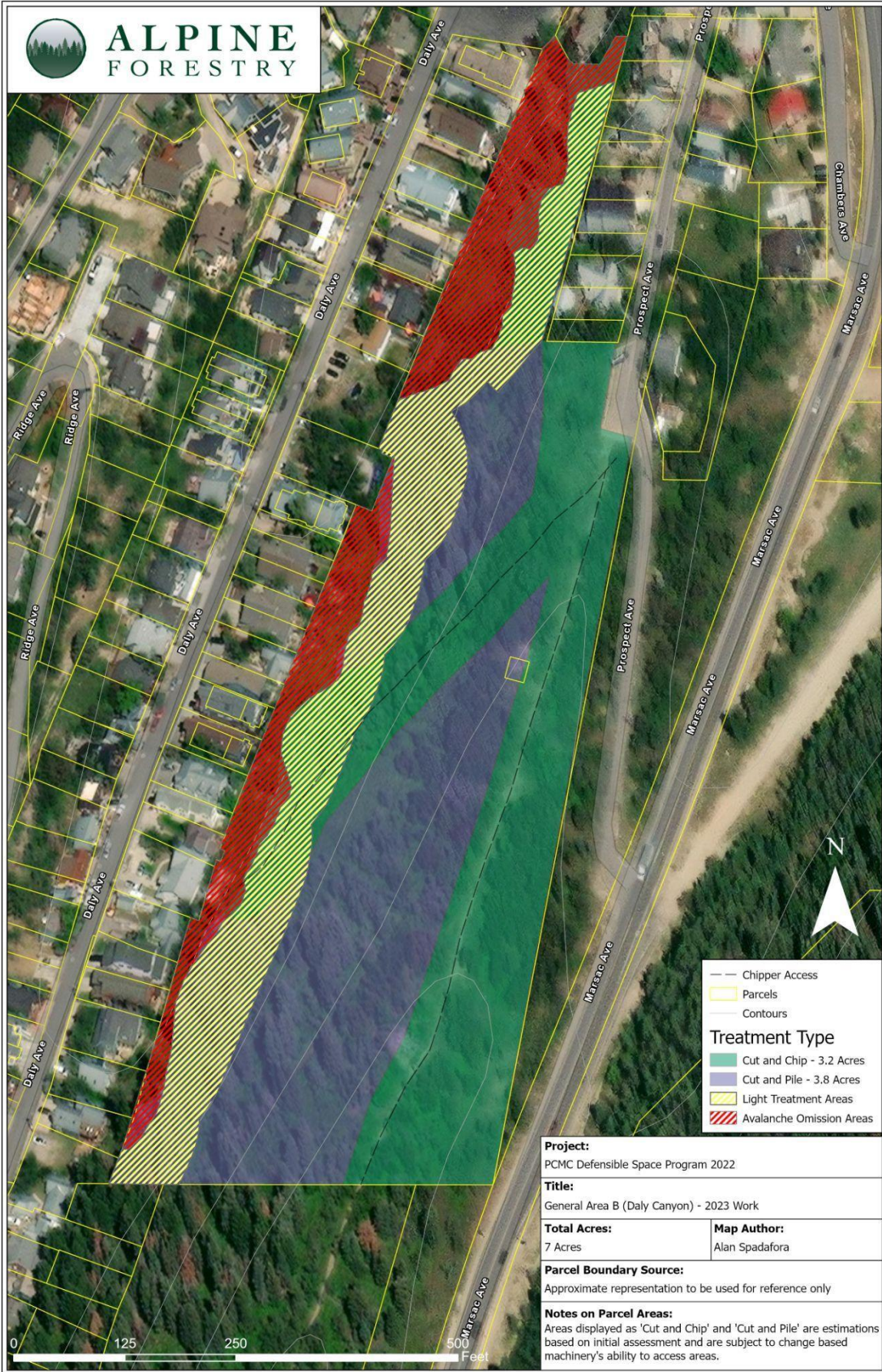


—	Summit Trails
—	Chipper
—	Parcels
—	Contours
Treatment Type	
■	Cut and Chip - 4.6 Acres
■	Cut and Pile - 6.7 Acres
■	Priority Area 5 - .8 Acres

Project: PCMC Defensible Space Program 2022	
Title: General Area A (Rossi Hill) - 2023 Work Plans	
Total Acres: 11.3 Acres	Map Author: Alan Spadafora
Parcel Boundary Source: Approximate representation to be used for reference only	
Notes on Parcel Areas: Areas displayed as 'Cut and Chip' and 'Cut and Pile' are estimations based on initial assessment and are subject to change based on machinery's ability to access areas.	



ALPINE FORESTRY



Project:
PCMC Defensible Space Program 2022

Title:
General Area B (Daly Canyon) - 2023 Work

Total Acres: 7 Acres **Map Author:** Alan Spadafora

Parcel Boundary Source:
Approximate representation to be used for reference only

Notes on Parcel Areas:
Areas displayed as 'Cut and Chip' and 'Cut and Pile' are estimations based on initial assessment and are subject to change based on machinery's ability to access areas.



ALPINE
FORESTRY



Project: PCMC Defensible Space Program 2022	
Title: General Area C (Ontario Lodge) - 2023 Work	
Total Acres: 1.5 Acres	Map Author: Alan Spadafora
Parcel Boundary Source: Approximate representation to be used for reference only	
Notes on Parcel Areas: The removal technique for this parcel, based on the topography will be 'Cut and Pile'. This is due to the limitations of machinery to safely travel on steep terrain.	