

- TRAIL LEGEND**
- 8' ASPHALT TRAIL
 - 5'-8' SIDEWALK
 - 4' SOFT TRAIL
 - FUTURE CONNECTION

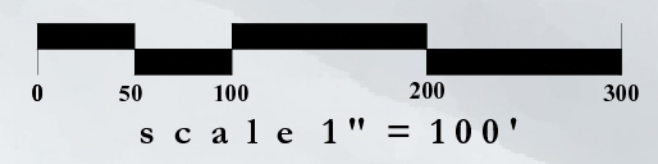
- RAIL TRAIL
- EXISTING PAVED TRAIL TO CITY FEILDS COMPLEX TUNNEL
- CONNECT TO RAIL TRAIL
- BUS STOPS
- NEW 8' PAVED TRAIL ALONG FRONTAGE WITH CONNECTION TO RAIL TRAIL

STATE OF UTAH
(ABANDONED UNION PACIFIC RAILROAD)

RICHARDSON FLAT ROAD

STATE HIGHWAY 40

NOW HERE

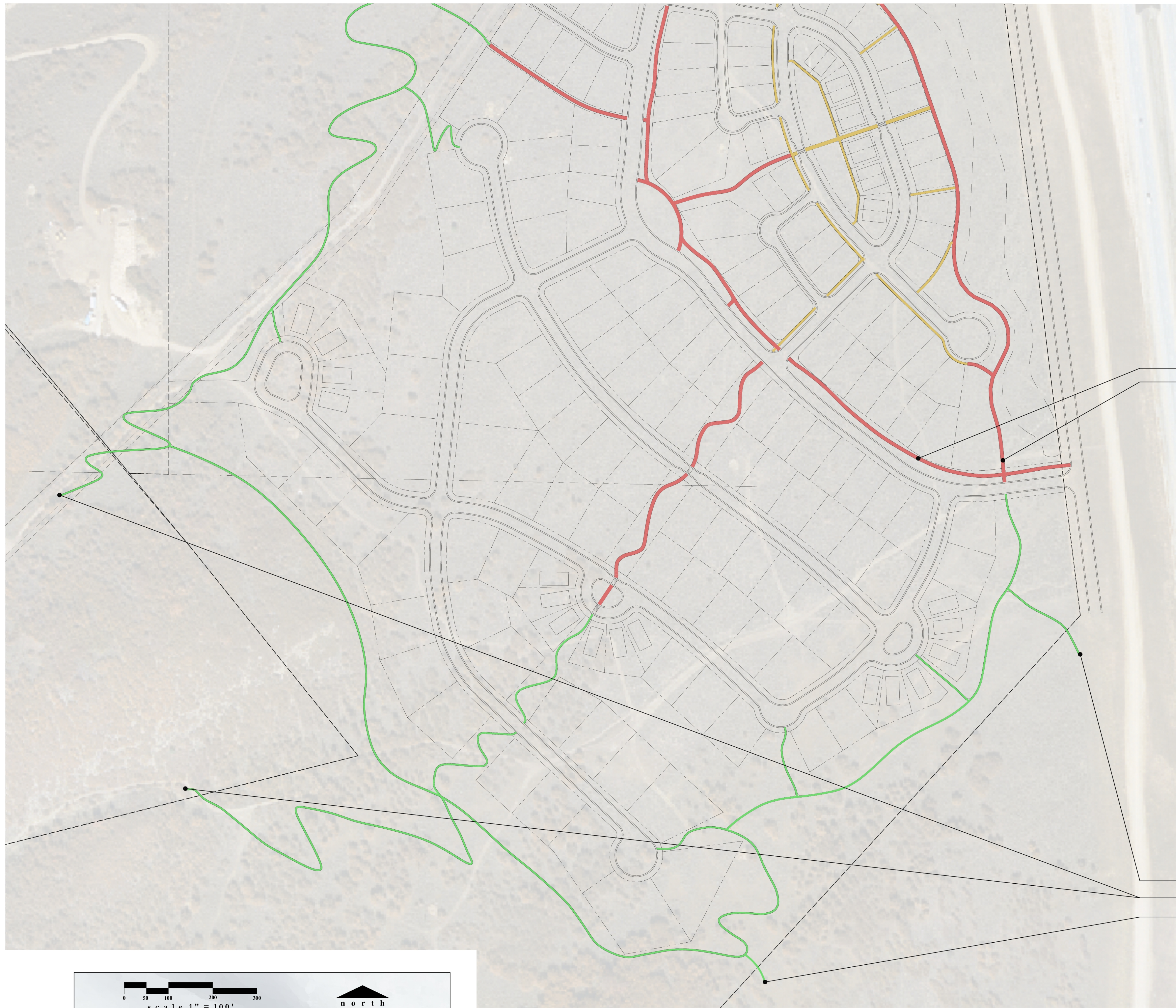


trail plan - map 1

park city heights

park city, utah & summit county, utah

February 2011

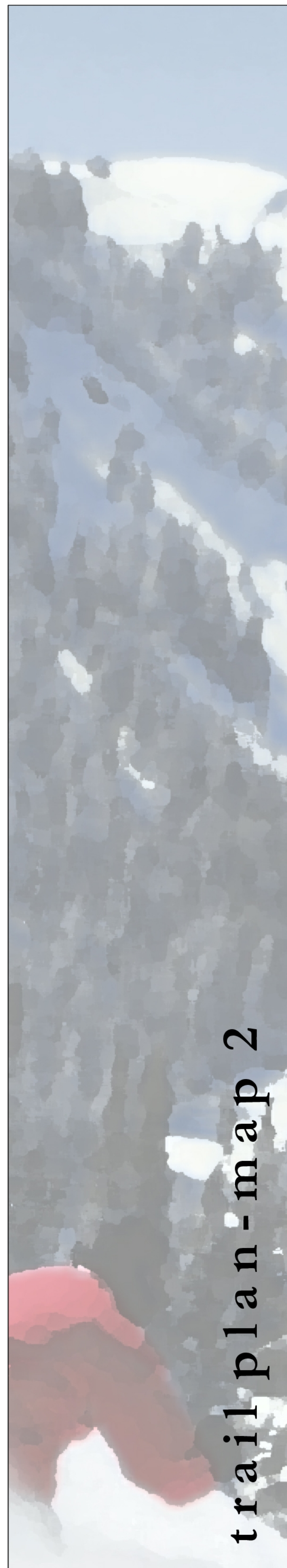


TRAIL LEGEND

- 8' ASPHALT TRAIL
- 5'-8' SIDEWALK
- 4' SOFT TRAIL
- FUTURE CONNECTION

PUBLIC COMMUNITY TRAILS
NEW 8' PAVED TRAIL ALONG FRONTAGE
WITH CONNECTION TO RAIL TRAIL

FUTURE TRAIL CONNECTION
TIE INTO EXISTING TRAIL CONNECTION
FUTURE TRAIL CONNECTION



trail plan - map 2

park city heights

park city, utah & summit county, utah

February 2011