



Stormwater Management in Park City

for Main Street businesses

DID YOU KNOW?

the storm drain ≠ the sewer

The storm drain system is separate from the sanitary sewer system. Water that enters our storm water system empties directly into our streams and creeks with no treatment.

Sanitary sewer collects and directs the following to the treatment plant:

- ◇ Wastewater from sinks, toilets, dishwashers, and floor drains

Storm drainage collects runoff and directs it to our streams and rivers without treatment from:

- ◇ Parking lots, streets, lawns, rooftops, driveways, etc.

Actions to Avoid

Putting anything except rainwater into the storm drains, such as:

- ◇ Mop water
- ◇ Grease, oil, oily liquids, solids
- ◇ Food waste/trash
- ◇ Chemical products
- ◇ Sand/dirt/debris

Pressure washing parking lots/walkways into the storm drain

- ◇ If pressure washing is necessary, block the storm drain with proper best management practice (BMP) to prevent sediment and/or pollutants from entering.

Disposal of Oil & Grease

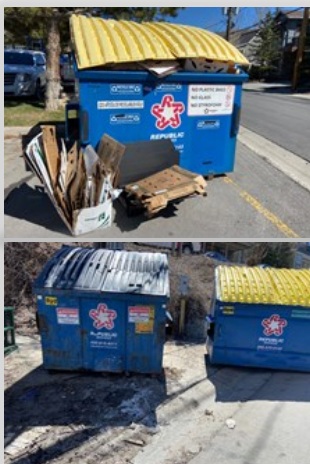
- ◇ Collect grease/oil in covered, leak free bins.
- ◇ Schedule regular recycling service pick ups with a local service.
- ◇ Never dump grease, oil, sauce, or fats into the sink, storm drain or dumpster.



Avoid tracking grease down sidewalks to garbage facility- use a lid or secondary containment.

Disposal of Waste

- ◇ Check dumpsters for leaks & repair if needed.
- ◇ Keep lids of garbage cans/dumpsters closed.
- ◇ Ensure all garbage/recyclable materials are placed in dumpsters - if they are full find another dumpster, bring to compaction facility, or try again later.



Avoid leaving packaging and other waste outside of full dumpsters, and report and/repair leaking and damaged dumpster.

Best Management Practices to Implement:

- ◇ Ensure sink drains and floor drains are connected to the sanitary sewer.
- ◇ Dispose of wash water (mop buckets, etc.) into sink/floor drain- **not storm drain**.
- ◇ Clean floor mats/exhaust filters/garbage cans/etc. in your utility sink or floor drain area.
- ◇ Routine maintenance of sewer and grease traps to prevent sewer overflows into storm drain.
- ◇ Ensure your grease/oil drums are regularly picked-up to prevent overfilling/spills.

Park City Contact Information:

Liz Lagoy, Storm Water Coordinator
 Phone • 435-615-5364
 Email • elizabeth.lagoy@parkcity.org
 Stormwater Division • 435-615-5307

If you witness or cause a spill call Streets/
 Storm Water and/or Dispatch 435-615-3600 for
 emergency spills and/or after hours.