

# PARK CITY **FORWARD**



a comprehensive  
transportation blueprint

**DRAFT** VISION SUMMARY





# PARK CITY FORWARD



a comprehensive  
transportation blueprint

# VISION SUMMARY

**Park City Forward** is our community's long-range transportation plan. It articulates a forward-thinking vision and package of investments that will guide decisions on how to spend transportation funds that best serve our values. As the city's long-range transportation plan, Park City Forward plans for the next 30-year planning horizon. Park City Forward aims to implement the transportation vision of the community. It provides projects and policies that shape the transportation network, but is not rigid in approach to remain flexible in an evolving and quickly-developing environment.

Park City Forward builds on many prior projects including: Park City Vision 2020, the General Plan, and the Transportation and Trails Master Plan. It includes coordinated Nodal and Modal Plans to show how the Project List will be programmed by location and transportation type in a phased and fiscally justifiable manner.

Since 2018, we have talked with and heard from hundreds of people – their ideas, concerns, challenges, priorities, and goals. While the needs and opinions of community members vary, a shared set of values anchors this work.

**Park City Forward is your plan.**





# OUR TRANSPORTATION VALUES

## OUR VISION

*Park City's transportation system embraces innovation to provide safe, year-round transportation options that promote a connected, inclusive, and multimodal mountain community and culture.*

## OUR GOALS



**ACCESS** - Improve local and regional multimodal transportation connections between activity nodes for residents, commuters, and visitors. Ensure the transportation network supports Park City's future growth and land use changes.



**INCLUDE** - Ensure equitable access to opportunity, catalyzed by local and regional mobility choices that are affordable and support healthy living.



**SUSTAIN** - Support a resilient, net-zero carbon community, anchored by long-term transportation investments that reduce greenhouse gas emissions, decrease single occupancy vehicle trips, and mitigate environmental consequences of growth.



**TRANSFORM** - Embrace innovative action to prioritize a community-focused, multimodal transportation network that is easy to use, efficient, convenient, safe, and incorporates cutting-edge technologies.

## OUR GUIDING PRINCIPLES

To make these goals a reality and further transportation innovation in our community, Park City operates within these five guiding principles:

- **Develop a Park Once community**
- **Collaborate with regional partners on long-range transportation solutions**
- **Identify, manage, and mitigate traffic during peak conditions**
- **Expand our world class biking and walking infrastructure**
- **Proactively review and analyze disruptive transportation and transit ideas and innovation**
- **Continue to develop and improve the internal Park City Transit system**

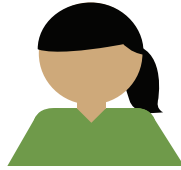
# OUR COMMUNITY

## PEOPLE

We recognize that there are multiple reasons why people travel within and to Park City. As such, Park City Forward is designed for multiple travelers displayed below. We recognize that these user types have different needs and a desire to go to various locations. Park City will continue to thrive because of its people. Park City Forward examined our community’s diverse transportation needs through a lens of our typical users to define tailored, yet complementary, transportation solutions.



PARK CITY RESIDENT



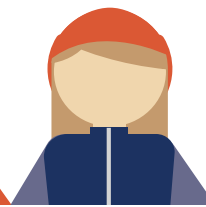
YEAR-ROUND EMPLOYEE OR BUSINESS OWNER



CULTURE AND EVENT VISITOR



RECREATION DAY-TRIPPER



SEASONAL EMPLOYEE



LONG-STAY VISITOR/SECOND HOMEOWNER

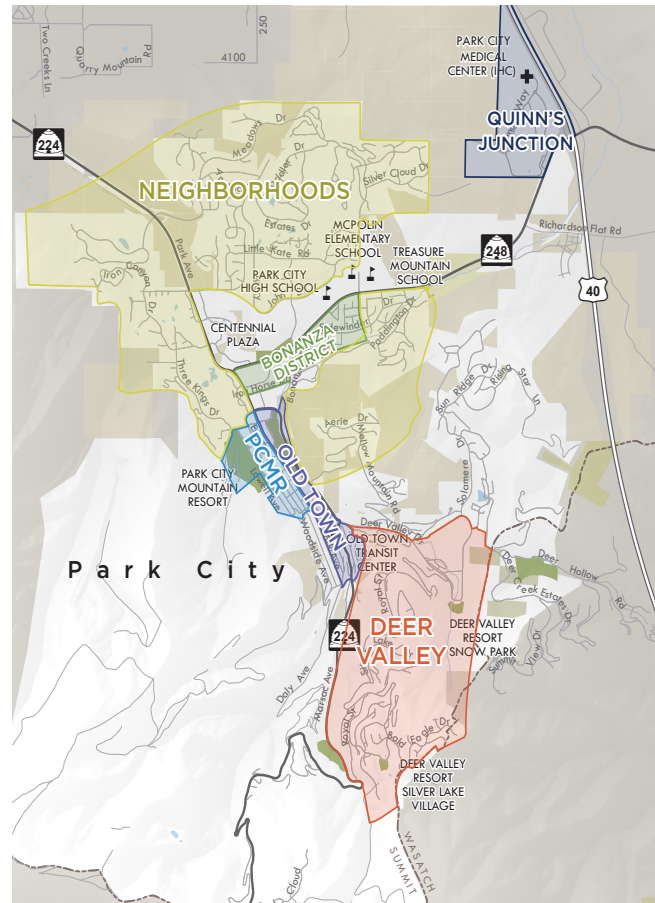
## PLACES

Park City Forward identifies six key nodes, or locations, where transportation challenges and their solutions are representative for the broader city. Woven together, Park City Forward’s nodal focus will anchor the city’s transformation of its transportation system.

Park City Forward identifies projects and mode split targets for each node that reduce drive-alone trips and support a park once community. Targets are calibrated by node to make sure they reflect project priorities and reasonable outcomes.

The targets will be assessed and updated over time as Park City Forward is implemented in the coming decades.

For more information regarding each of these key nodes please reference the full Park City Forward blueprint document.



# OUTREACH

The Park City community has shaped Park City Forward at all stages of the planning process, from early listening sessions to refinement of proposed transportation strategies. Beginning in 2018, Park City Forward is built on years of community voices and knowledge. At the outset of Park City Forward, the project team articulated four core principles to guide how we engaged the public throughout the planning process:

- Listen to understand people’s transportation and mobility challenges, needs, and desires
- Involve a broad range of stakeholders with diverse perspectives and experiences
- Educate people about potential solutions and what tradeoffs may be necessary to achieve meaningful results
- Collaborate to develop locally generated solutions with technically sound expertise

A technical advisory committee (TAC) was an invaluable resource and met with the project team more than a dozen times over the course of the project. The TAC included representatives from resorts (Deer Valley and Park City Mountain), Park City Chamber of Commerce, HPCA, Summit County, Park City Lodging, Park City School District, Utah Department of Transportation (UDOT), Ski Utah, High Valley Transit, and other local businesses, employers, and residents.

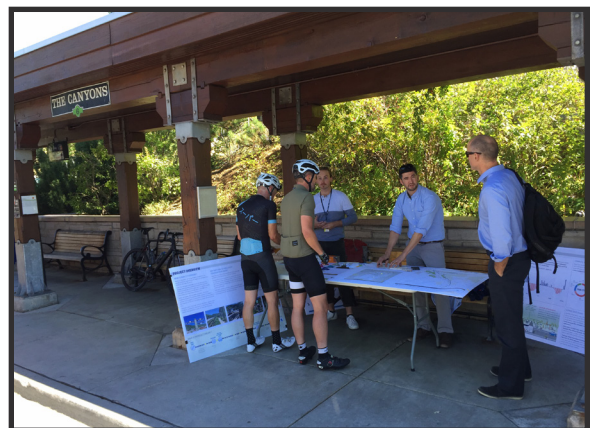
People living, working, and visiting here shared their ideas about what the community can and should be through multiple transportation surveys and community workshops. Park City Forward was showcased at four open houses: September 2018, March 2019, and September 2019, and September 2021.

Recognizing that meeting people where they are is one of the best ways to reach a broad audience, the project team hosted mobile workshops at six different locations, including one location specifically targeting the Spanish-speaking community. These events were supported by on-line engagement throughout.

Open Houses



Mobile Workshops



Public support for several key themes and top project ideas emerged consistently throughout Park City Forward’s public engagement activities and phases:

- Develop **high-capacity transit service** and/or **transit priority lanes** along gateway corridors
- Expand the network of **high-frequency transit service**
- Improvements to Main Street and Old Town to support business operations while balancing the need for **safe, comfortable walking and bicycling access**
- Develop commute **incentive programs** and update parking pricing and options to improve employee and visitor access at resort areas
- Improve sidewalks and crossings and develop **multimodal improvements** in Bonanza District and along Park Avenue, Kearns Boulevard, and Deer Valley Drive
- Complete the **sidewalk network** to make walking the default choice for short trips
- Develop new **park-and-ride facilities** and serve them with fast, **frequent transit connections**

Stakeholder and public feedback were a critical part of project evaluation criteria. For more information regarding outreach refer to Chapter 2 of the Park City Forward Report or the Park City Forward Community Engagement Report.

1,000+ views of project website

Over 900 survey participants

## PARK CITY FORWARD



a comprehensive transportation blueprint



OVER **1,700** COMMENTS AND IDEAS RECEIVED

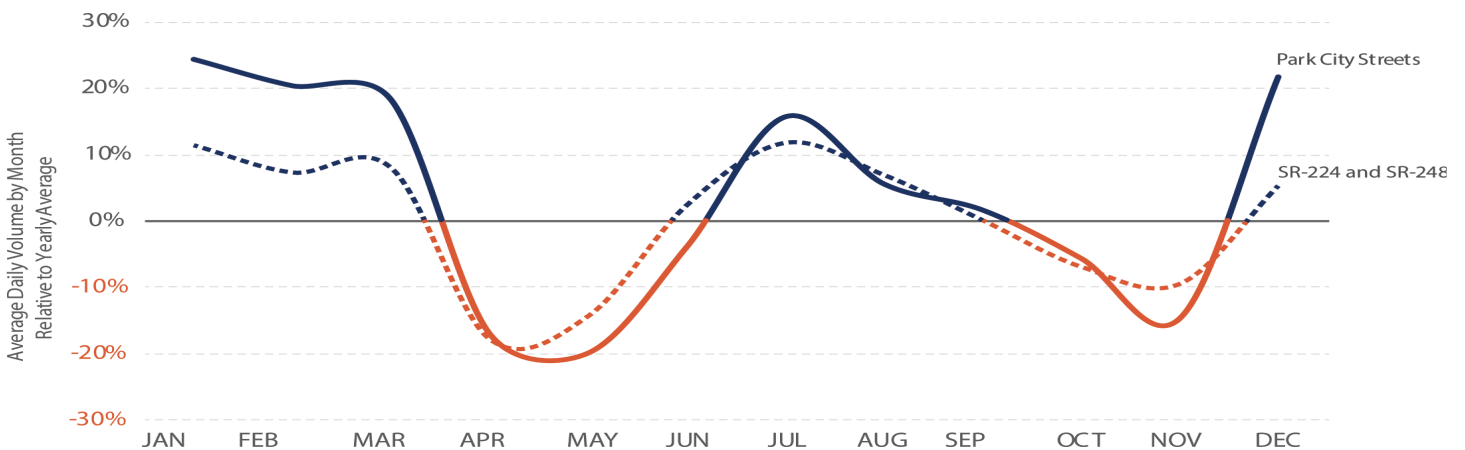
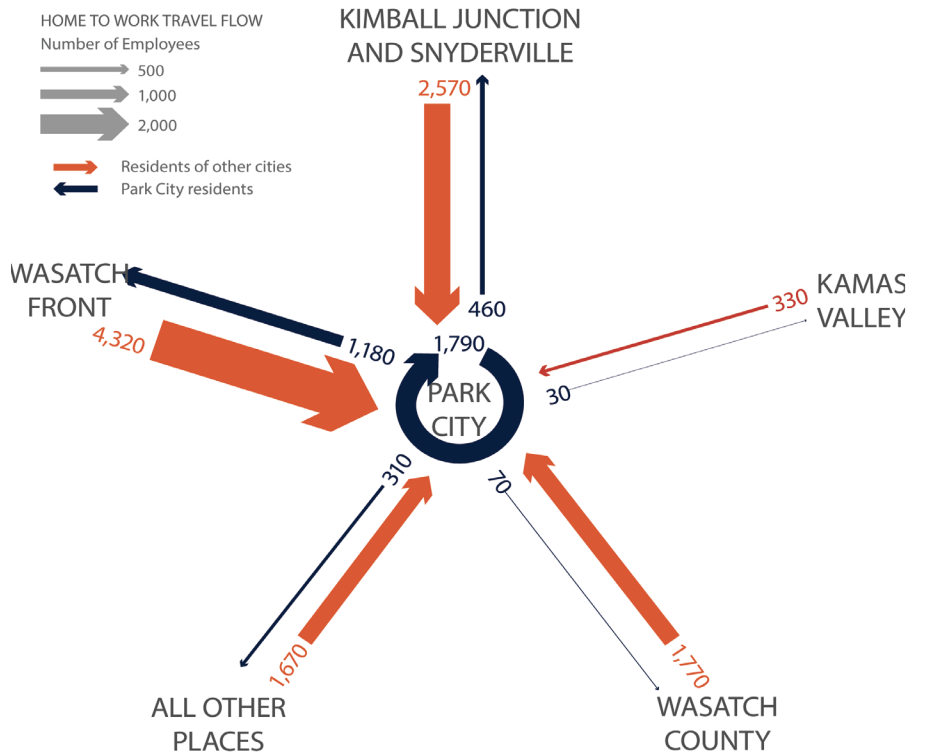
# A REGIONAL GATEWAY

Park City is part of a regional transportation network that extends beyond the city boundaries. This means that our future - and the transportation system- will evolve in tandem with surrounding communities.

In addition to regional residents and employees, Park City's recreational opportunities and major events bring thousands of people to town, swelling the city to more than five times the local population at certain times of the year. These peak times combine with a workforce that largely travels into the Park City community. To build for peak demand would require a system that is not fitting with Park City's historical and community makeup.

Park City Forward seeks to build a transportation system that can scale with peak period but not negatively change the design and feel of the town.

To hold onto our values, we need to get ahead of the demographic trends and find mobility opportunities that will leverage our healthy and dynamic regional economy. We can plan for growth and lessen today's transportation challenges while addressing social equity, environmental sustainability, access to work, and affordable housing.





# PRIORITY PROJECT PLAN

Park City Forward elevates the projects that will best help us reach our goals and fulfill our vision. The map on the next page shows some of the highest priority projects to keep Park City moving forward.

## GETTING TO PARK CITY

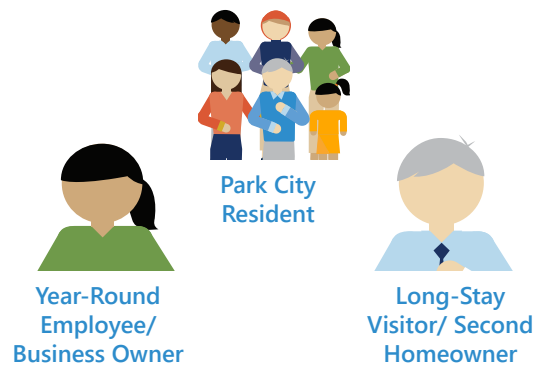


Park City is working to decrease the amount of traffic coming into town by providing robust mobility options, including new regional services, parking areas outside of town via intercept lots, and enhanced transit service.

### Priority Projects

- **SR-248 Corridor Mobility Improvement Project**
- **Support Regional Projects (PC-SLC Connect)**
- **SR-224 High-Capacity Transit**
- **SR-248 Transit Corridor Study**
- **Park-and-Ride Facilities**
- **Park City Mountain Resort (PCMR) Multimodal Hub**
- **Deer Valley Resort Multimodal Hub**
- **Peak Day Mitigations**
  - » Wayfinding, Real-time Information, and Data
  - » Marketing & Communications
  - » Real-time Travel Information

## GETTING AROUND PARK CITY

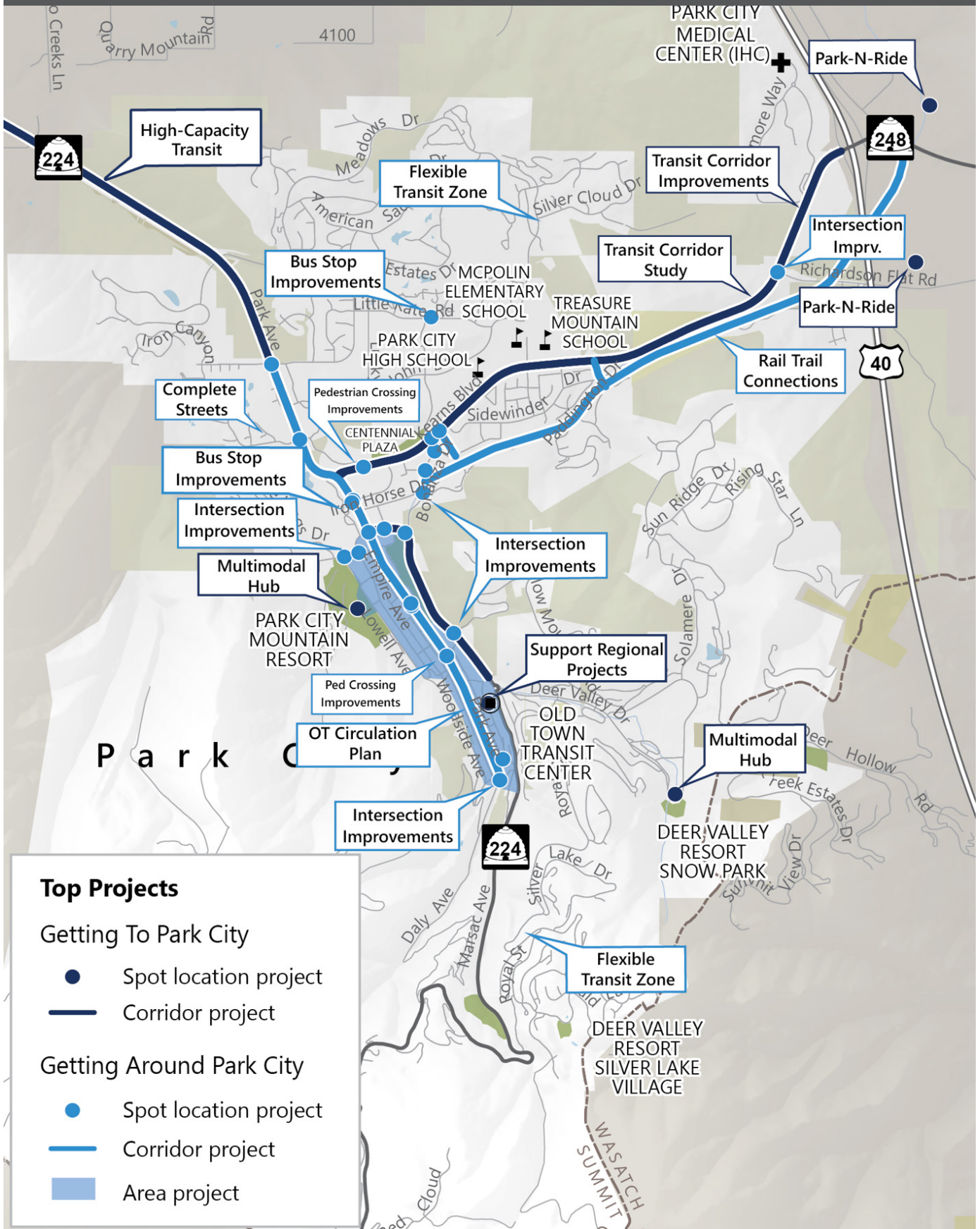


When people are in Park City, we focus our investments in projects and modes that support parking once, using non-driving modes as able, and improving connections for the local community.

### Priority Projects

- **Pedestrian Crossing Improvements**
- **Rail Trail Connections**
- **Park Avenue Complete Streets**
- **Old Town Circulation Plan**
- **Intersection Improvements**
- **Flexible Transit Zones**
- **Bus Stop Improvements**

Park City Forward - Highest Priority Projects



# FINANCIAL OVERVIEW

## THE PARK CITY FORWARD FINANCIAL PROGRAM

Park City Forward defines substantial transportation investments over the next 30 years. While Park City Forward is not a fiscally constrained plan, the financial program makes reasonable assumptions, allowing for realistic implementation over the next 30 years. Implementing the projects, programs, and policies will require funding from a combination of existing and potential federal, state, regional, local, and other sources. This is a high-level planning exercise, all project costs are planning-level estimates designed to approximate costs and revenues via best practice assumptions. As such the Park City Forward financial program is best utilized as a prioritization and education tool, identifying relative tiers of investment and the full funding need for transportation in Park City.

## HOW WERE THE COST ESTIMATES DEVELOPED?

Park City Forward used a mix of sources to inform cost estimation, including local project costs and municipal expenses, city transportation and capital improvement plan (CIP) line items, a national database of built transportation project costs, and professional judgment. Capital costs include physical improvements such as transit lanes and park-and-ride facilities, while program and ongoing costs are items that generally do not have physical infrastructure improvements associated with them, including new staff positions and operating transit service.

## PARK CITY FORWARD FINANCIAL COSTS AND PROJECTED REVENUE

Fully funding Park City Forward will require a wide variety of funding sources. Current funding sources for Park City already include a combination of Federal Grants, State Grants, County Contributions, the Local Transportation Fund, and the Local City Fund, which is not transportation-specific and is competitive for citywide project funding. The total cost for the Park City Forward Project List is estimated at \$722.33 million through 2050. The total cost for the Phase 1 Priority Projects is estimated at \$87.23 million. Based on current projections, Park City has an estimated \$58 million available to fund projects, though this total may be subject to uncertainty. An additional \$29.2 million in "supplemental" funding may be available, but would need potential City or other revenue sources to address the funding gap. The total of these two values was used to set the Phase I project list.

Using an estimation based on projecting recent historical budget data across years 6-30, it is assumed that a total of \$336.47 million maybe available to fund projects in the future Big Concepts and Vision phases. Of the projected revenue only the City Transportation Fund is under the immediate discretion of council and available for transportation projects. There is a high degree of uncertainty with many of the funding sources. A funding gap of \$385.86 million is estimated for the full life of Park City Forward.



## CLOSING THE FUNDING GAP

To fully implement the transportation projects and programs identified in Park City Forward, Park City in coordination with the state, Summit County, and other partners, will need to identify and secure additional funding sources. Some of these sources, such as grants, are available but highly competitive. Others would require local or state action to initiate, or expand their use, such as additional fees, taxes, or bonds.





# OUR PLAN

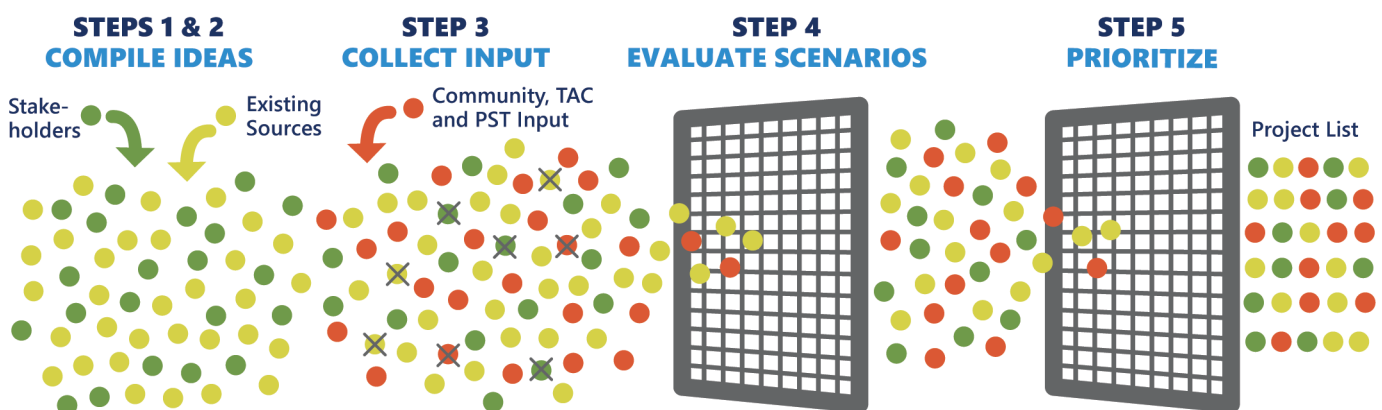
Park City Forward identifies an extensive project list for multimodal infrastructure projects, policies, and programs that will help keep Park City moving and address challenges across each travel mode. The project list represents the community's ideas to make an innovative, multimodal future a reality. The Park City Forward project list consists of 84 transportation initiatives in the following areas:

-  Active Transportation – 26 Projects
-  Parking and TDM – 14 Projects
-  Roadway and Goods Movement – 13 Projects
-  Shared Mobility – 4 Projects
-  Transit – 19 Projects
-  Technology and Innovation – 8 Projects

The list ranges from the visionary and years into the future to the expansion of smaller scale projects that are currently ongoing. The project list is organized into phases, recognizing that financial resources are finite, and we must adopt a phased approach that prioritizes investments relative to our means.

- Phase 1 Priority Projects: a fiscally-constrained package of investments that will catalyze near-term action and mobility benefits.
- Big Concept Projects: Transformative projects that Park City is actively developing, or plans to seriously pursue in the near-term.
- Vision Projects: a long-term package of investments that will guide decision-makers and staff as community needs, transportation tools, and financial resources evolve.

## HOW WAS THE PROJECT LIST DEVELOPED?



## EVALUATE AND PRIORITIZE

Throughout Park City Forward, the project team worked with city staff and the TAC to closely review and refresh the project list. The PC Forward Team added new projects, removed projects that were implemented or were no longer viable, and added new detail throughout based on Park City's capital projects list and new ideas from staff and TAC members. City Council, Planning Commission, the TAC, and the Park City community told us which projects were most important within key geographic areas of the city, and which were most important within each travel mode. To develop the project phasing, all the projects were evaluated against Park City Forward's goals, travel benefits, community and stakeholder feedback, and PC Forward Team discussions.

## IMPLEMENTATION AND NEXT STEPS

Constructing, enacting, and adopting transportation and transit projects, programs, and policies is how we make Park City a better place to live, work, and visit. Park City Forward is not the end of our work, but the beginning. It is now up to us as a community to put the plan into action. Critical next steps towards implementation include establishing the next generation of biking and walking projects, working with local and regional partners on regional transportation improvements, developing capital improvement projects, and understanding the future of emerging transportation and transit technologies. Using the project's vision, goals, and action items, Park City Forward provides a framework for the future of transportation in Park City.



