

Wildland Fire

Overview

Wildfire is the most frequently occurring natural hazard within the Summit County area. It can also pose the most eminent danger to current and future residents. Each jurisdiction is surrounded by mountains and have structures abutting forested areas.

Development Trends

As development occurs on the bench areas of Summit County more homes will be in danger of wildfire. Communities need to make developers and homeowners aware of the danger. Cities and the county should also require firebreaks and access roads along urban/wildland interfaces. Although development brings homes closer to areas of potential wildfire, it also brings water and access for firefighters closer to the urban fringe. Firewise community development principles, such as not storing firewood near homes, installing fire resistant roofing and cleaning debris from rain gutters will reduce potential losses.

Profile

Frequency	Multiple wildland fires occur in Utah County Every year.
Severity	Moderate
Location	Hillsides and mountainous areas, open grass and range lands.
Seasonal Pattern	Summer and fall depending on weather conditions.
Duration	A few hours to a few weeks depending upon conditions
Speed of Onset	1 to 48 hours
Probability of Future Occurrences	High Major Fires: 0.09 (300 acres and larger) All Fires: 0.3 (50 acres and larger)

History

Fires

Fire Name	Start Date	Acres	Cost	Source	Fire Cause
East Fork	6/28/2002	14204.70	\$14,200,000	FS	

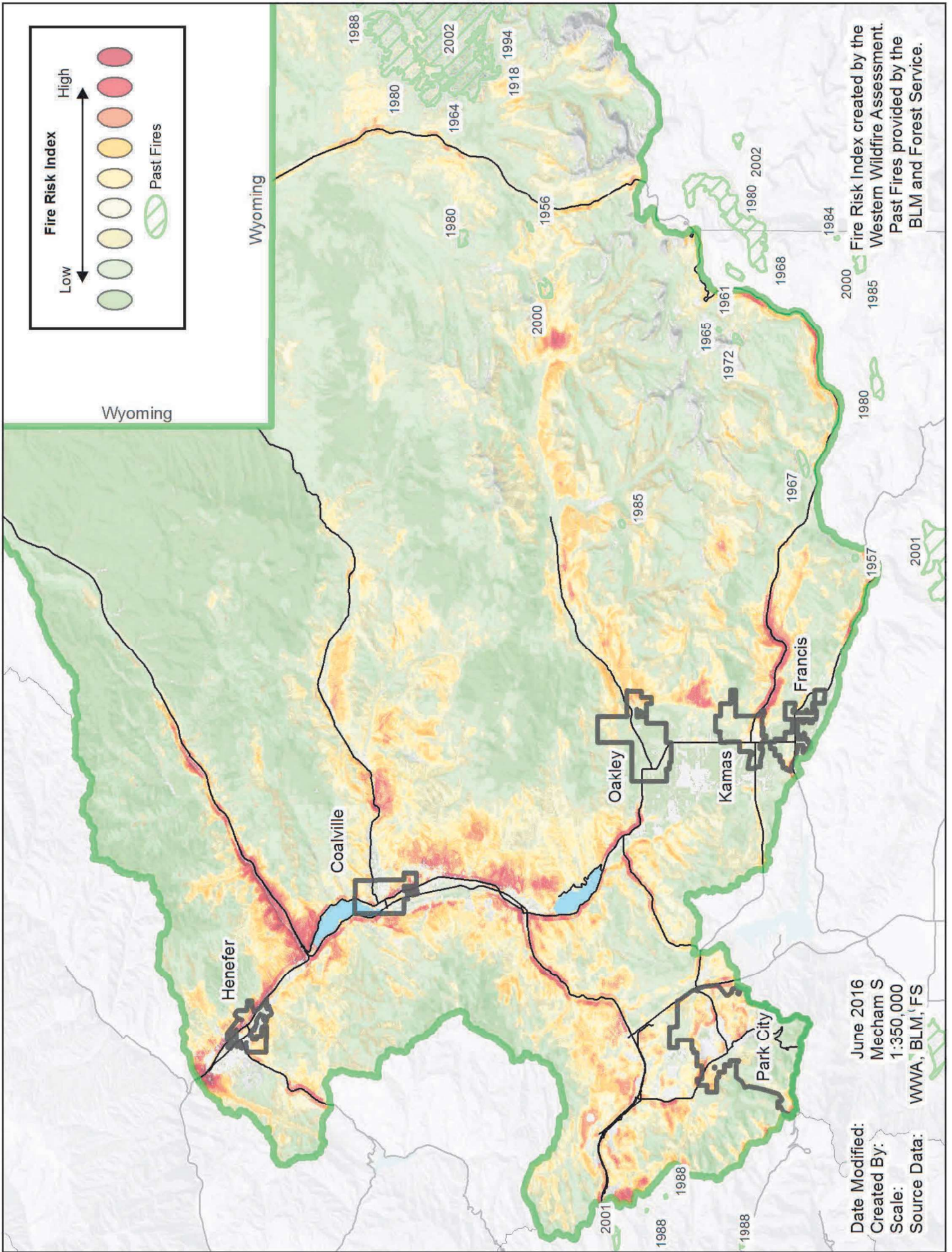
Eagle Canyon	7/24/1999	3744.00		BLM	Human
Lily Lake	6/23/1980	3260.77	\$0	FS	
Echo	7/21/2000	750.00		BLM	Human
Echo	8/14/2003	300.00		BLM	Human
Total Fires 300 Acres and larger 5		22259.48	\$14,200,000		
Echo Canyon	8/16/2007	294.00		BLM	Human
Boy Scout	6/27/1994	221.55	\$125,000	FS	
Dry Fork	9/6/2000	200.91	\$1,300,000	FS	
North Fork Provo	1967	195.36	\$0	FS	
1918 Fire	1918	185.72	\$0	FS	
S. S. HELL	8/18/1986	150.00		BLM	Human
Deer Creek Fire	1980	141.03	\$0	FS	
Coal Mine	6/12/2006	99.55	\$75,000	FS	
Haystack Mountain	1972	74.37	\$0	FS	
Phone Booth	8/21/2007	56.00		BLM	Human
1964 Fire	10/11/1964	55.19	\$0	FS	
Total Fires over 50 acres 16		23933.16	\$15,700,000		

Mitigation

The FFSL has helped communities develop Community Fire Plans. According to the FFSL, the purpose of community fire planning is to:

- Empower communities to organize, plan, and take action on issues impacting community safety
- Enhance levels of fire resistance and protection to the community
- Identify the risks of wildland/urban interface fires in the area
- Identify strategies to reduce the risks to homes and businesses in the community during a wildfire

Community Name	Date Signed
Alpine Acres (Near Oakley)	Sep 2008
Aspen Mountain/Aspen Acres (In Weber Canyon)	Aug 2006
Beaver Springs Ranch (aka Beaver Creek Ranch in Weber Canyon)	Nov 2015
Canyon Rim (Near Oakley)	Aug 2006
Cherry Canyon (Near Wanship)	Jun 2008
Colony at White Pine Canyon (Park City)	Sep 2006
Echo Creek Ranches (Echo)	Aug 2014
Hidden Lake (Weber Canyon)	Aug 2006
Holiday Park (Weber Canyon)	Aug 2006
Manorlands (North Central County)	Sep 2014
Monviso (North Central County)	Oct 2011
Moose Hollow (Weber Canyon)	Sep 2008
Park City	Oct 2014
Pine Mtn. (Weber Canyon)	Sep 2006
Pine Plateau (North Central County)	Unfinished
Pinebrook Master HOA (Park City)	Oct 2006
Pines Ranch (Weber Canyon)	Jul 2014
Rockport (State Park)	Jul 2006
Samak	Aug 2006
Silver Creek (Park City)	Unfinished
South Fork (Provo Canyon)	May 2007
Stagecoach Estates (Park City)	Aug 2007
Summit Park (N of Park City)	Aug 2014
Tollgate Canyon CWPP (Near Park City)	Jul 2008
Uintalands (North Central County)	Sep 2011



Damage Assessment and Mitigation

Overview

Listed below are the damage assessments for each of the participating jurisdiction followed by an update of the community's mitigation strategies from the 2010 plan, after which are the strategies the community wishes to pursue in the course of this plan. Damage assessments were calculated using the methodologies mentioned in the Methods section. Strategies were developed by each community with assistance from MAG as requested. The subsequent county and city strategies reflect the advancement of local and regional goals and continue the community's vision for the security and prosperity of the region. These goals include:

- Reducing the impact of natural hazards on life, property, and preserving the environment
- Minimizing damage to infrastructure and services and protecting their ability to respond
- Preventing potential hazards from affecting area or mitigating its effects
- Increasing public awareness, capabilities and experience
- Ensuring the safety of citizens and visitors
- Enabling cooperation between citizens and emergency and public services
- Maintaining cooperation with, and adherence to, FEMA guidelines
- Developing zoning and other plans that decrease development in hazardous areas

Summit Unincorporated	Buildings at Risk	Monetary Loss	Acreage
100 Year Flood	501	\$87,019,002	5934.7
500 Year Flood	1038	\$382,586,953	6860.9
Dam Failure	742	\$290,439,865	5649.7

Fire-High and Moderate Risk	4178	\$1,504,764,115	26307.2
Landslide	774	\$93,692,535	7345.2
Liquefaction	0	0	0.0

Statement of Vulnerabilities: Many cities in Summit County don't prioritize hazard mitigation and county-wide emergency management efforts get poor response. To counter this, a Community Emergency Planning group has been formed which meets quarterly to address Emergency Management concerns.

Addressing the Floodplain: County ordinance 212-A, "Floodplain development", includes comprehensive Floodplain management objectives and building requirements. See the example in Section X, Policy and Program Capability for more information.

Protecting Current Residents and Structures (2010)

Hazard	Action	Priority	Timeline	Estimated Cost	Potential Funding Sources	Responsible Party	Implemented?	If not, why not?
Flooding/ Dam Failure	Promote NFIP participation.	High	Ongoing	Minimal	Local Cash, Grants	Local Government, FEMA, UDHS	Yes	
Earthquake	Inventory current critical facilities for seismic standards.	High	3 years	TBD	Local Cash, Grants	Local Government	Yes	
Wildfire	Educate homeowners on FIREWISE practices.	High	Ongoing	Minimal	Local Cash, Grants	Local Government	Yes	
Landslide	Public education on and correct watering practices and retaining measures in susceptible areas.	Medium	1 year	TBD	Local Cash, Grants	Local Government, UGS	Yes	

Protecting Future Residents and Structures (2010)

Protecting Current Residents and Structures (Oakley)

Hazard	Action	Priority	Timeline	Estimated Cost	Potential Funding Sources	Responsible Party
Flooding/ Dam Failure	Promote NFIP participation	High	Ongoing	Minimal	Local Cash, Grants	Local Government, FEMA, UDHS
Earthquake	Inventory current critical facilities for Seismic standards	High	3 years	TBD	Local Cash, Grants	Local Government FEMA, USGS
Wildfire	Educate homeowners on FIREWISE practices	High	Ongoing	Minimal	Local Cash, Grants	Local Government

Protecting Future Residents and Structures

Hazard	Action	Priority	Timeline	Estimated Cost	Potential Funding Sources	Responsible Party
Flooding/ Dam Failure	Update Flood and Inundation mapping and incorporate them into general plans and ordinances	High	3 years	TBD	Local Cash, Grants	Local Government, FEMA, USGS
Earthquake	Promote earthquake awareness	High	Ongoing	Minimal	Local Cash	Local Government

Park City	Buildings at Risk	Monetary Loss	Acreage
100 Year Flood	336	\$100,118,941	34.7
500 Year Flood	811	\$250,021,185	128.8
Dam Failure	44	\$20,895,617	65.9
Fire-High and Moderate Risk	388	\$304,481,408	315.0

Landslide	139	\$172,256,628	241.8
Liquefaction- low	2767	\$1,112,844,403	774.1

Statement of Vulnerabilities: Park City has a community in the Wildland Fire Urban Interface with only two evacuation routes and a potential single point of failure. Park City also has a large visitor and second-home population that can be difficult to direct and/or communicate with.

Addressing the Floodplain: Municipal Code 8.01 “Flood Control and Prevention” is comprehensive, an example of which can be found in Section X Policy and Program Capability of this document. Park City also has an excellent Storm Water Master Plan.

Protecting Current Residents and Structures (2010)

Hazard	Action	Priority	Timeline	Estimated Cost	Potential Funding Sources	Responsible Party	Implemented?	If not, why not?
Flooding/ Dam Failure	Promote NFIP participation.	High	Ongoing	Minimal	Local Cash, Grants	Local Government, FEMA UDHS	Limitedly	
Earthquake	Inventory current critical facilities for seismic standards.	High	3 years	TBD	Local Cash, Grants	Local Government	In process	
Wildfire	Educate homeowners on FIREWISE practices.	High	Ongoing	Minimal	Local Cash, Grants	Local Government	In process	
Landslide	Public education on and correct watering practices and retaining measures in susceptible areas.	Med	1 year	TBD	Local Cash, Grants	Local Government, UGS	In process	

Protecting Future Residents and Structures (2010)

Hazard	Action	Priority	Timeline	Estimated Cost	Potential Funding Sources	Responsible Party	Implemented?	If not, why not?
Flooding/Dam Failure	FEMA Firm was integrated into Park City's Environmental GIS system for Building/Planning Dept.	High	2 years	10,000	Park City	Park City	Completed	
Flooding/Dam Failure	PCMC implemented a WebGIS allowing the public to research local flood plain issues on the Web.	High	2 years	15,000	319 CWA Grant	Park City	Completed	
Flooding/Dam Failure	http://dagrc.utah.gov/ParkCityGIS/				319 CWA Grant	Park City	Maps online, website N/A	
Flooding/Dam Failure	Update Flood and Inundation mapping and incorporate them into general plans and ordinances.	High	2 years	TBD	Local Cash, Grants	Local Government, FEMA, UDHS	In Process	
Earthquake	Promote earthquake awareness and preparation.	High	1 year	Minimal	Local Cash, Grants	Local Government, UGS, USGS	Ongoing with Shakeout	
Wildfire	Incorporate FIREWISE landscaping requirements into local ordinances within areas at risk.	High	1 year	Minimal	Local Cash, Grants	Local Government	In Process	
Landslide	Coordinate and update landslide mapping within the area with UGS and USGS.	High	3 years	Minimal	Local Cash, Grants	Local Government, UGS, USGS	City Engineer	

Protecting Current Residents and Structures (Park City)

Hazard	Action	Priority	Timeline	Estimated Cost	Potential Funding Sources	Responsible Party
Flooding	New Storm Water Utility	High	3-5 years	3 Million	Local Cash	Local Government
Flooding	Update FIRM	Med	Ongoing, see City Engineer	Minimal	Local Cash, FEMA	Local Government, State, FEMA
Fire	Create Community Wildfire Protection Plan with PCFD	High	Completed 2014, now implementing	2-50 thousand	Local Cash, Grants	Local Government, Fire Department
Earthquake	Upgrade City Buildings	Medium	Ongoing	Significant	Local Cash, Grants	Local Government

Protecting Future Residents and Structures

Hazard	Action	Priority	Timeline	Estimated Cost	Potential Funding Sources	Responsible Party
Wildfire	Incorporate FIREWISE landscaping requirements into local ordinances within areas at risk	Medium	1 year	Minimal	Local Cash, Grants	Local Government