

Q & A's for the Waste Characterization for the Downtown Park City Business Improvement District RFP
(four questions and answers)

Question:

The scope mentions “measuring” the waste streams (including refuse, recycling and food waste). Does the City want to measure how much waste various businesses generate? Or is the intent of this work to measure the composition of the wastes? There are different methods for measuring generation and composition, please clarify the desired measurement.

Answer:

We want to measure the composition of waste streams.

Question:

Can the City provide an inventory of all of the refuse, recycling and food waste services being received by all of the businesses in the BID? Specifically, can this inventory include: a list of the specific containers in service; the size of each container; the frequency of collection for each container; and whether the container is shared or used by only one generator?

Answer:

An inventory of common (shared) refuse and recycling is included in [Attachment A](#), Exhibits A and B, of the [RFP](#). The City does not have information on the number, size or frequency of collection of containers on private properties that are individually contracted with the waste service provider.

If additional information is required from the City in order to complete the waste characterization study, please include that in your proposal. It would be the preference of the City if the chosen contractor could collect additional data from businesses that individually contract refuse, recycling and food waste services. The City can provide contact information.

Common (shared) Dumpster Sizes and Pickup Frequency

Container Location	Container Size	Timeframe	Monday	Tuesday	Wednesday	Thursday	Friday	Saturday	Sunday**	Total # of Days
South Brew Pub Parking Lot	8 yard	4/16 – 12/15	X				X			2
South Brew Pub Parking Lot	8 yard	12/15 – 4/15	X		X		X	X		4
Creekside	8 yard	4/16 – 12/15	X				X			2
Creekside	8 yard	12/15 – 4/15	X		X		X			3
Brick Enclosure	4 yard	Year Round	X		X		X			3
South Brew Pub Lot	8 yard	12/15 – 4/15	X		X		X	X		4
South Brew Pub Lot	2 nd 8 yard	12/15 – 4/15	X				X			2
Creekside	8 yard - Cardboard	year round	X		X			X		3

South Brew Pub Lot		year round	X		X			X		3
China Bridge	30 yard compactor	On-call								
Across from Transit Center	30 yard compactor	On-call								

Exhibit A

Existing locations of common (shared) containers

Historic Park City Trash and Cardboard Recycling Locations



Across from Transit Center
Trash and Cardboard Recycling Compactors



China Bridge Parking Garage
Trash Compactor



Behind 314 Main Street
Trash



Behind Firewood Cardboard Recycling



Brew Pub Parking Lot
Trash Dumpster



Mobile Recycling Center

The Mobile Recycling Drop-off Center accepts sorted cardboard, paper, plastic, aluminum, metal, polystyrene and glass (wine box size amount) from any business in Park City's Business Improvement District. To address large glass recycling needs please contact Curb-it Recycling at (435) 901-2568 or Good Earth Recycling at (435) 653-0272.

Dates of Service for the Sundance Film Festival: January 13, 15, 16, 17, 18, 19, 20, 22, 24 and 27.

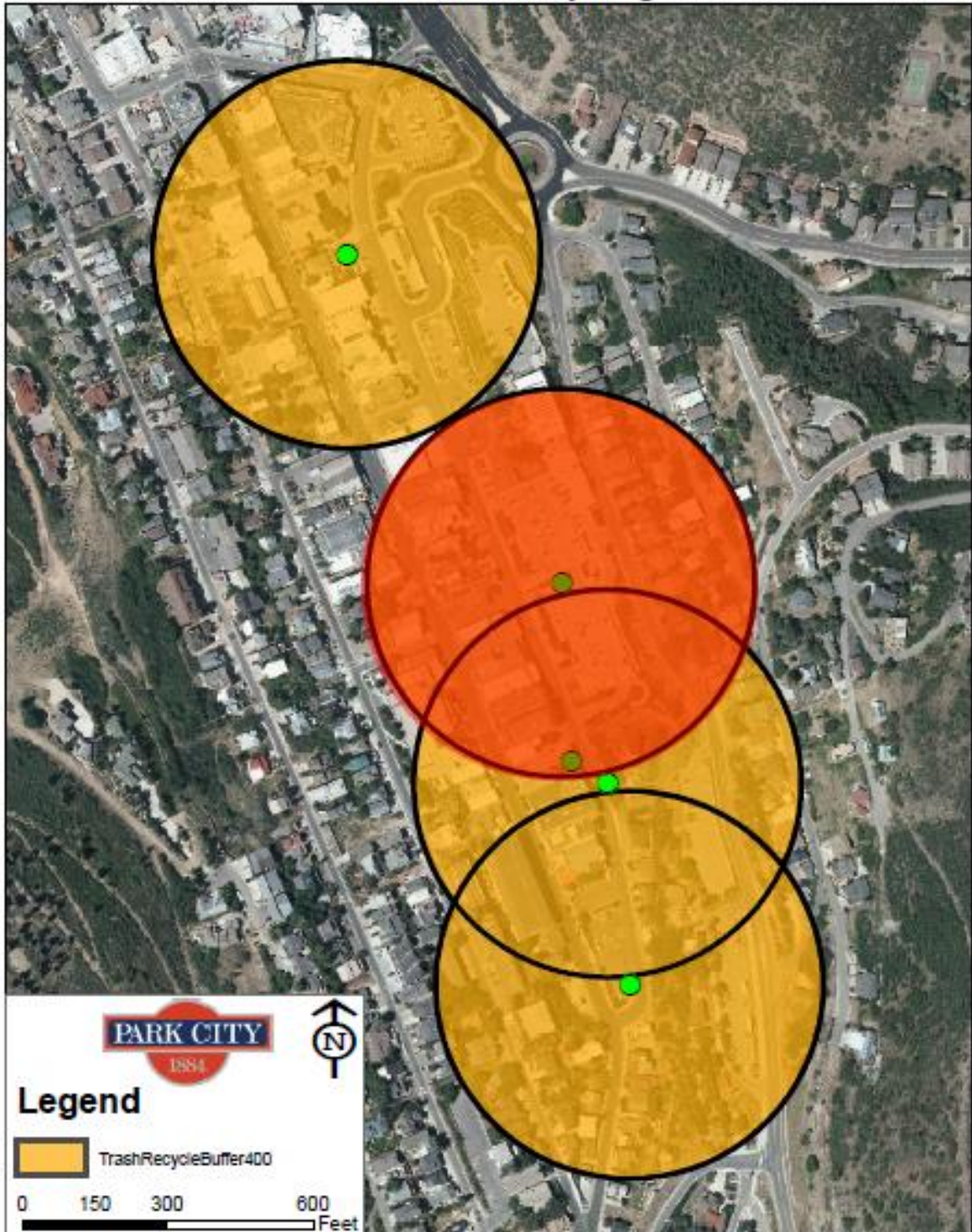
Times and Locations:

Uptown Fare, 9:55 -10:05 am	Yuki Yama, 11-11:15 am
The Egyptian, 10:05-10:25 am	Silver Queen Hotel, 11:15-11:30
Bistro 412, 10:25-10:35 am	Collie's, 11:30-11:40 am
Shabu, 10:35-1045 am	Butcher's, 7th Street 11:40-12 noon
Pizza Noodle, 10:45-11 am	

Exhibit B

Common (shared) Container Distance Analysis

Trash & Recycling



Question:

Will the City provide a covered work location for performing manual sorting? Will the City arrange for removal of sorted materials from this work site?

Answer:

The City will organize a work location at the Summit County 3 Mile Landfill, located at 6550 West Three Mile Canyon Rd, Coalville, UT.

Question:

We note that 40% of the evaluation is based on the proposed timeline. What is City's desired schedule to complete this work?

Answer:

The City would like get waste characterization for the remaining winter ski season, which typically lasts from November through April, as well as peak times in summertime, e.g. Fourth of July.