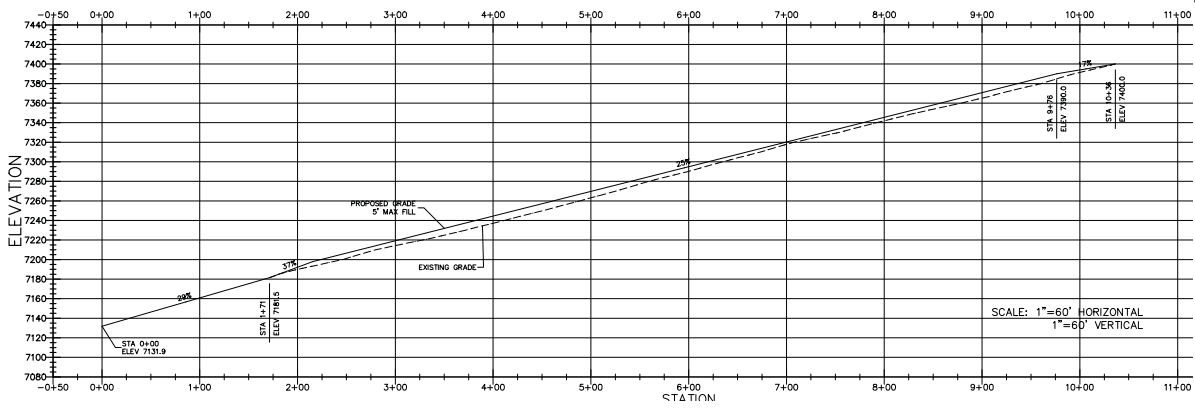


PROFILE VIEW OF KING'S CROWN SKI RUN



Evergreen Engineering, Inc.

1270 Williams Drive • Suite 101 • Lake Placid, NY 12946
 Phone: (435) 644-4667 • Fax: (435) 644-9219
 E-mail: office@evergreen-engineering.com

REVISIONS	DATE	BY	COMMENTS



SURVEYED BY: CRW/ADM
 DRAWN BY: ADM
 CHECKED BY: ADM

PROPOSED EXPORT FILL PLACEMENT EXHIBIT
 KING'S CROWN

FOR: CHEE PARTNERS

DATE: 12/26/2016

PROJECT: LOWELL-PIZZON

Kings Crown
potential fill locations

Legend
areas for fill

