

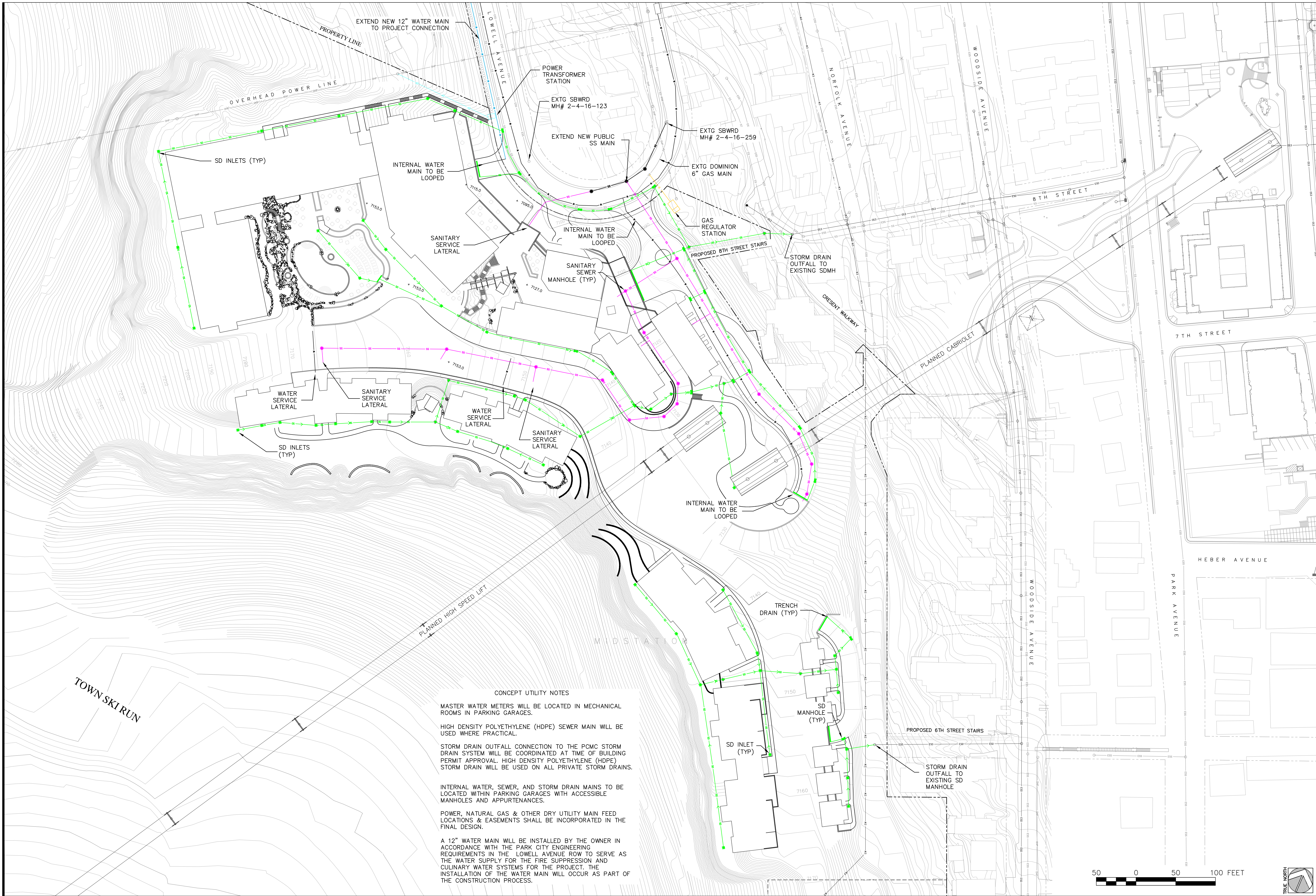
DATE:	NOV 20, 2017
PROJECT NO.:	04-16-02
FILE:	TREASURE
REVISIONS	DATE

ALTA ENGINEERING INC.
 CIVIL ENGINEERING • LAND PLANNING
 SURVEYING • PROJECT MANAGEMENT
 PO BOX 2864 PARK CITY, UTAH 84060 435-649-9191

FOR: MPE INC

TREASURE
 REFINEMENT 17.2
 CONCEPT UTILITY PLAN

SHEET NO:
 E4.1



CONCEPT UTILITY NOTES

MASTER WATER METERS WILL BE LOCATED IN MECHANICAL ROOMS IN PARKING GARAGES.

HIGH DENSITY POLYETHYLENE (HDPE) SEWER MAIN WILL BE USED WHERE PRACTICAL.

STORM DRAIN OUTFALL CONNECTION TO THE PCMC STORM DRAIN SYSTEM WILL BE COORDINATED AT TIME OF BUILDING PERMIT APPROVAL. HIGH DENSITY POLYETHYLENE (HDPE) STORM DRAIN WILL BE USED ON ALL PRIVATE STORM DRAINS.

INTERNAL WATER, SEWER, AND STORM DRAIN MAINS TO BE LOCATED WITHIN PARKING GARAGES WITH ACCESSIBLE MANHOLES AND APPURTENANCES.

POWER, NATURAL GAS & OTHER DRY UTILITY MAIN FEED LOCATIONS & EASEMENTS SHALL BE INCORPORATED IN THE FINAL DESIGN.

A 12" WATER MAIN WILL BE INSTALLED BY THE OWNER IN ACCORDANCE WITH THE PARK CITY ENGINEERING REQUIREMENTS IN THE LOWELL AVENUE ROW TO SERVE AS THE WATER SUPPLY FOR THE FIRE SUPPRESSION AND CULINARY WATER SYSTEMS FOR THE PROJECT. THE INSTALLATION OF THE WATER MAIN WILL OCCUR AS PART OF THE CONSTRUCTION PROCESS.

