



UPDATES:
#1 08/07/2017

DAVID G. ELDRIDGE, ARCHITECT
SALT LAKE CITY, UTAH 84103
PHONE: 801.580.3783
EMAIL: david@delredge.com

Applicant: MPE Inc.
P.O. Box 2429
Park City, Utah 84060
(435) 901-2077
email: psbro23@mac.com

V17.2 - 2017 Refinements #2 to 2009 Submittal
Site & Circulation Plan

TREASURE - PARK CITY, UTAH

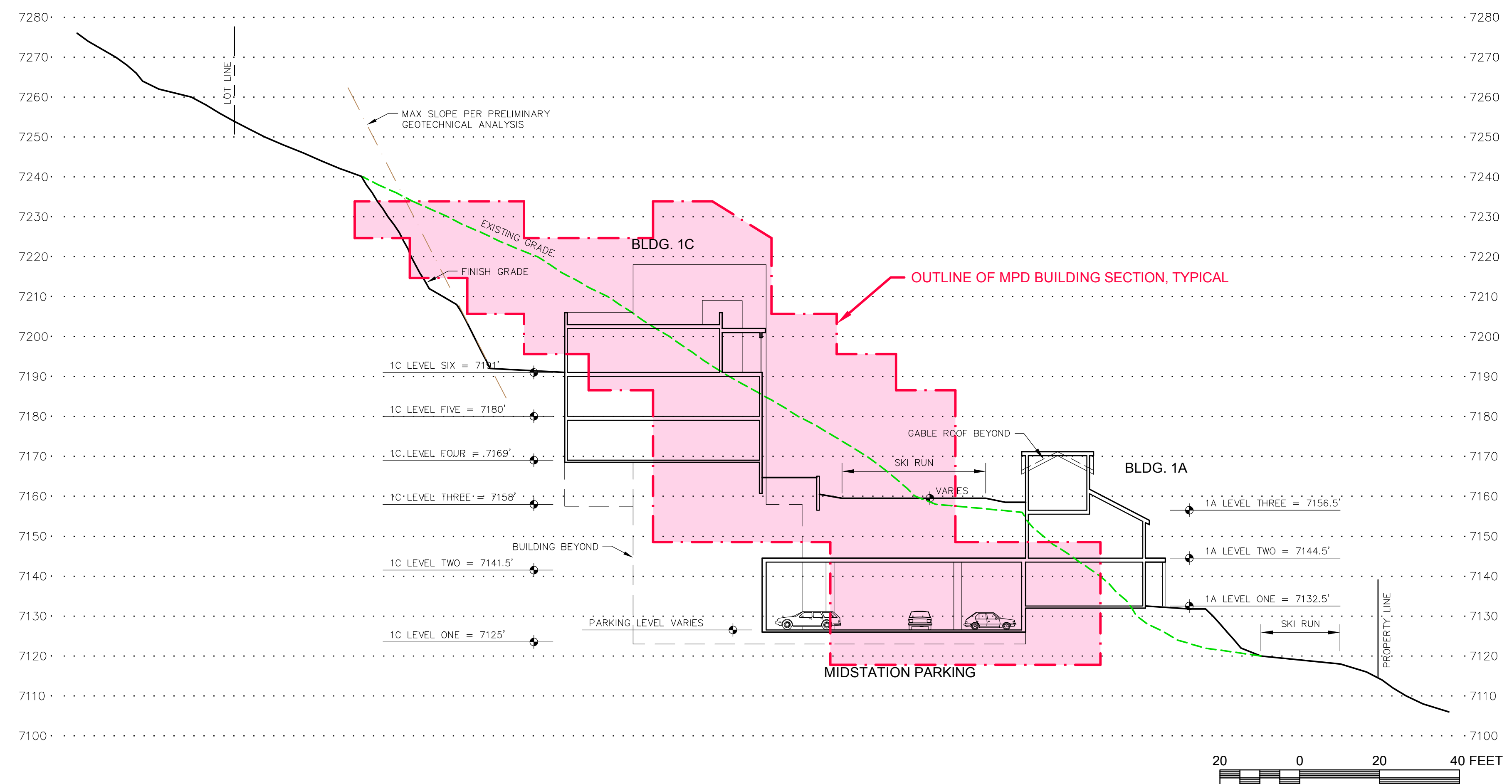
2017 Refinement # 2
Compared to MPD

SHEET NO.
MPD COMPARATIVE
SP.1

DATE: 07/20/2017

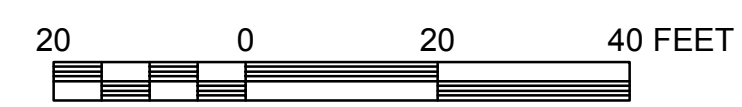
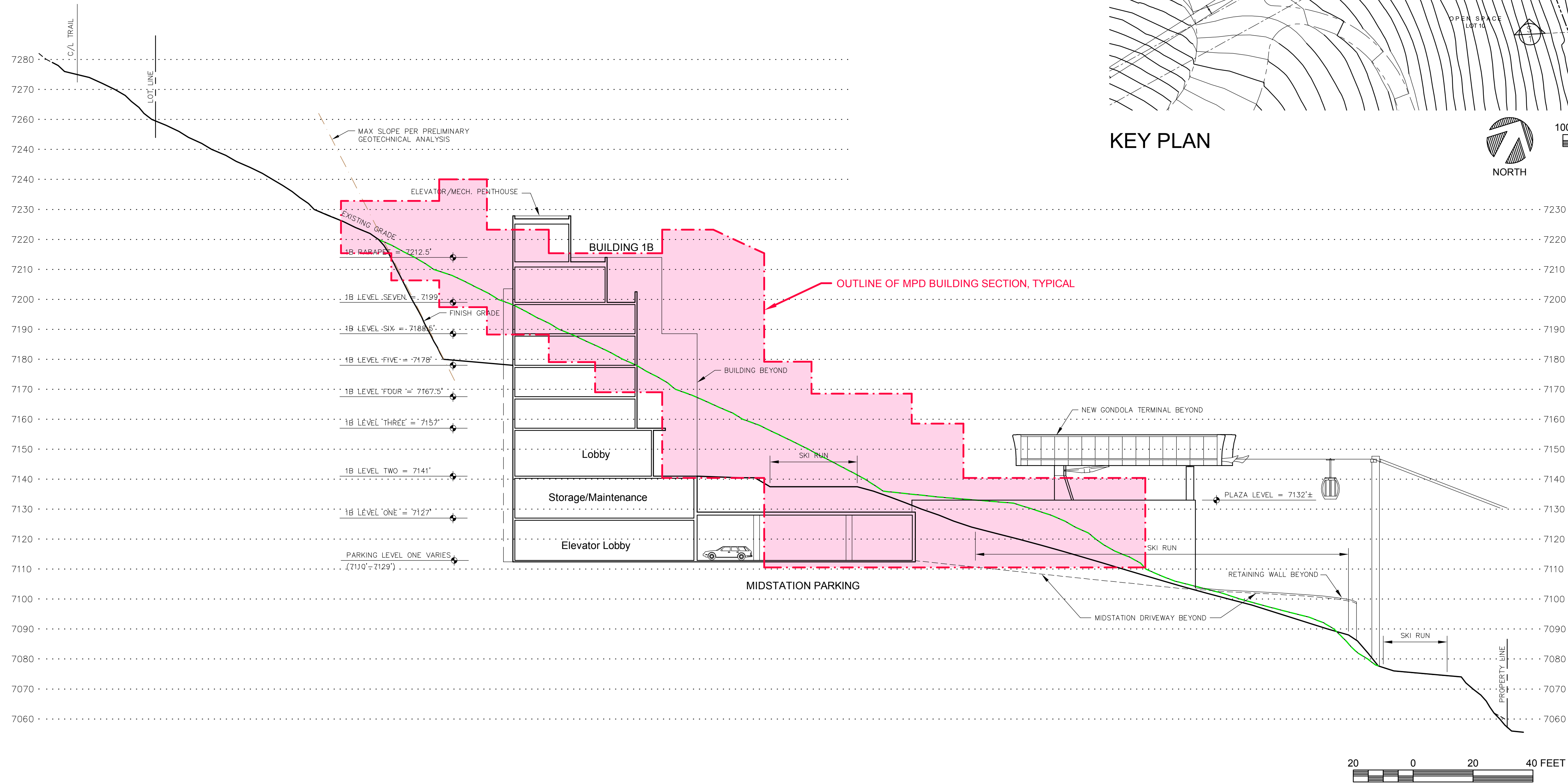
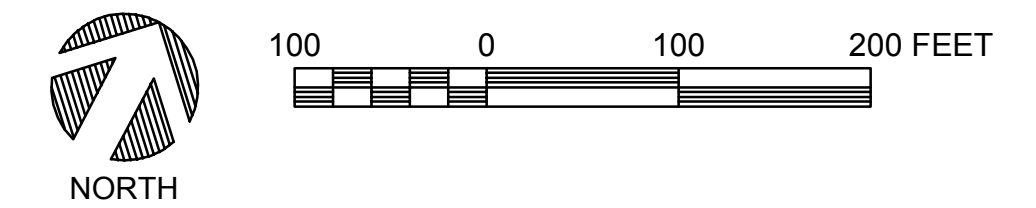


KEY PLAN



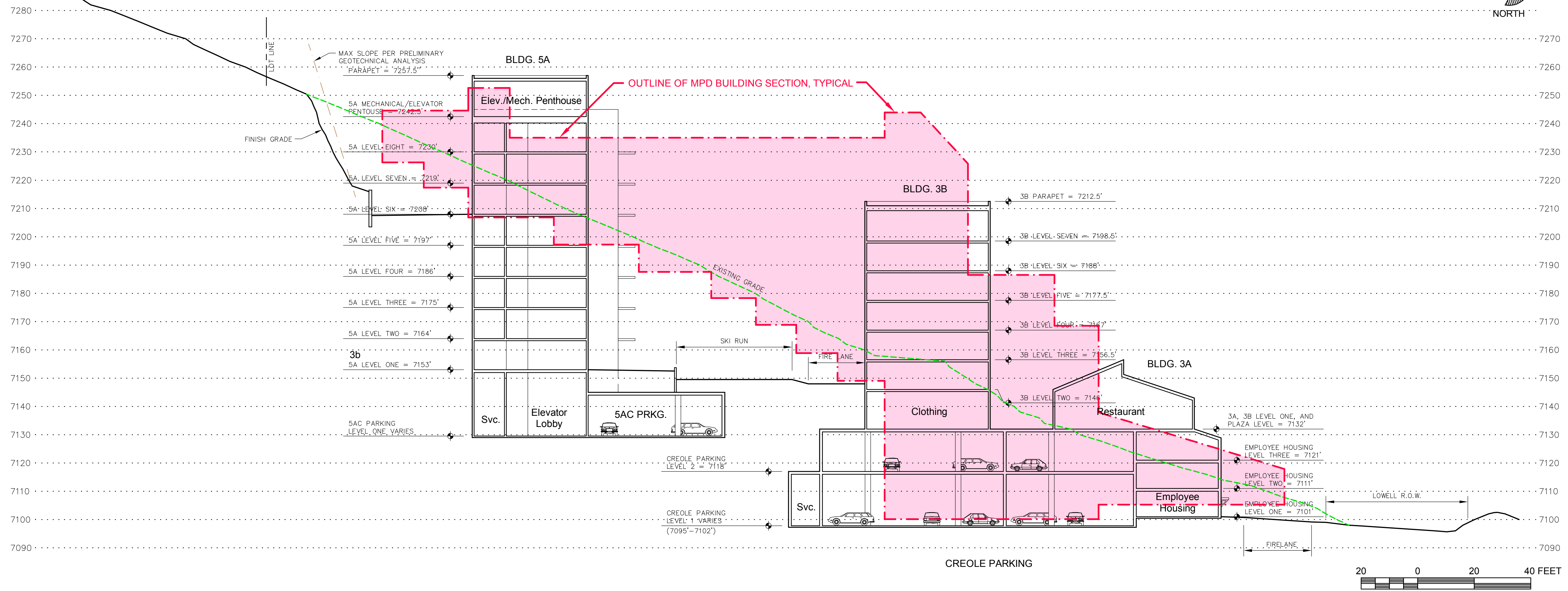
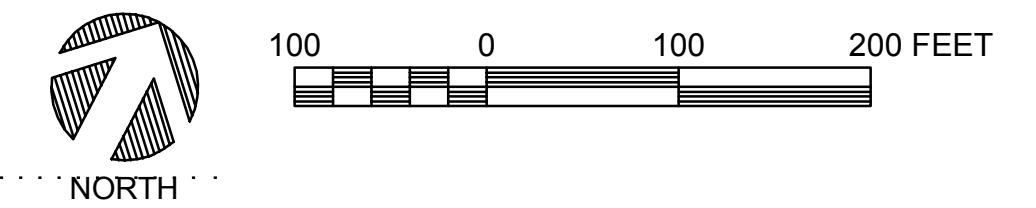


KEY PLAN



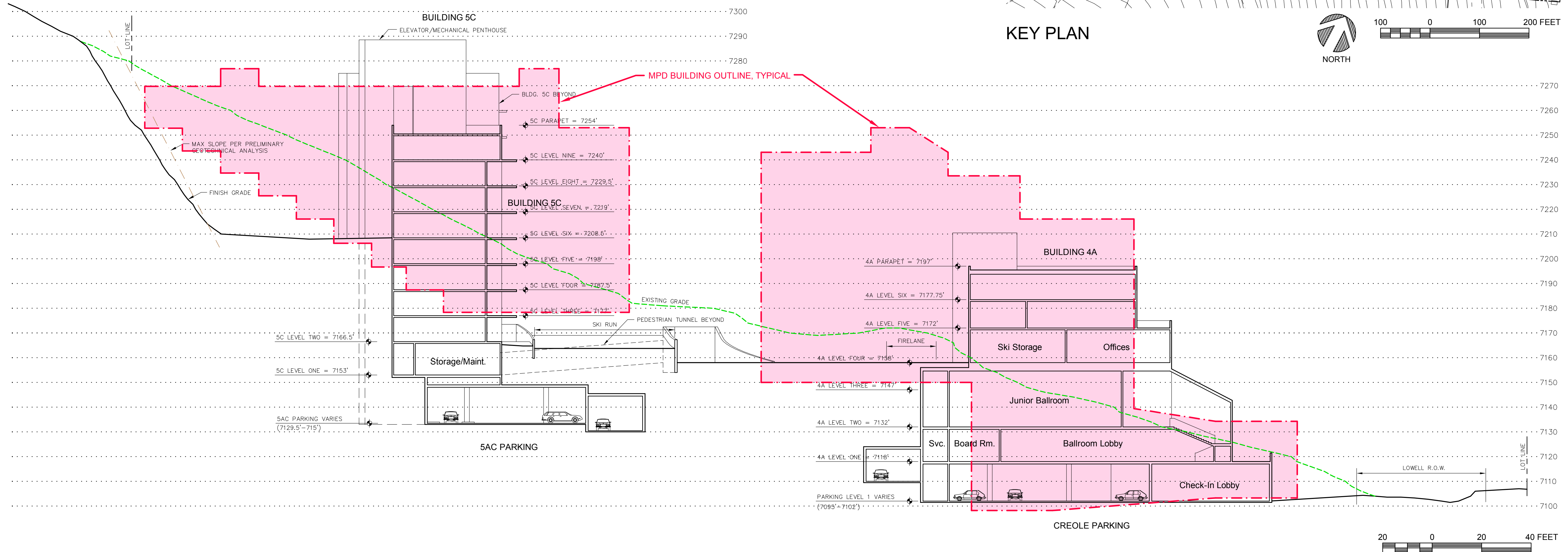


KEY PLAN





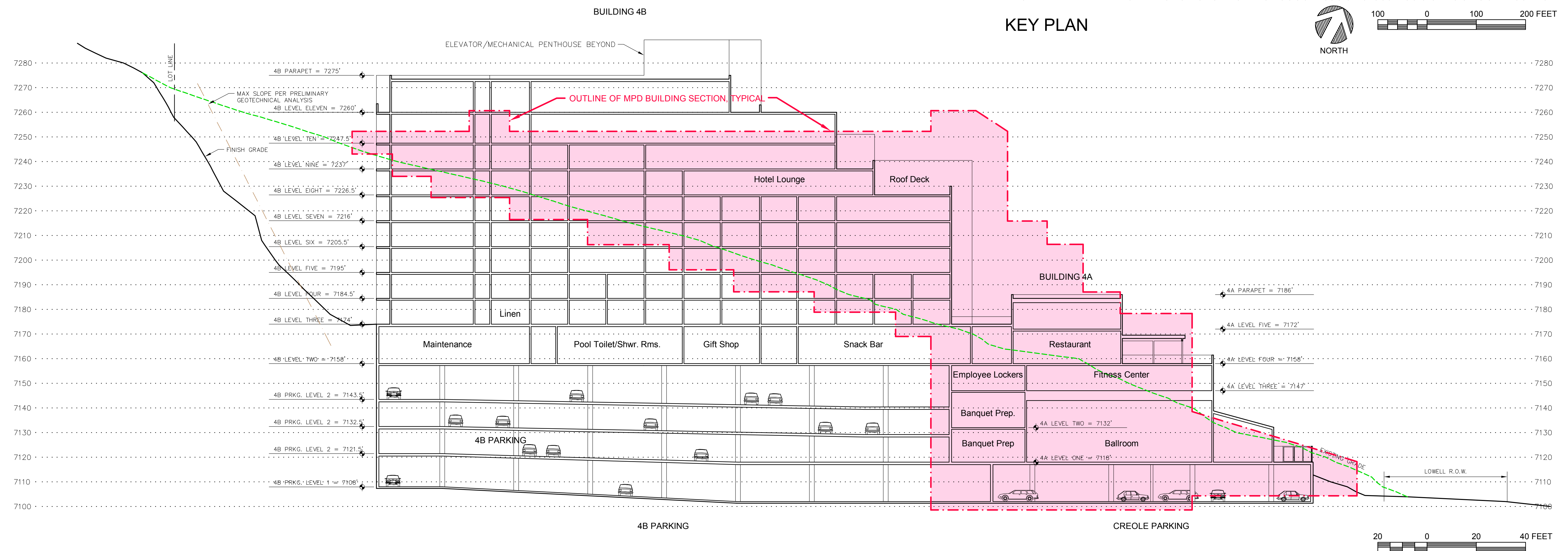
KEY PLAN



CREOLE PARKING



KEY PLAN



BUILDING 4B

4B PARKING

CREOLE PARKING