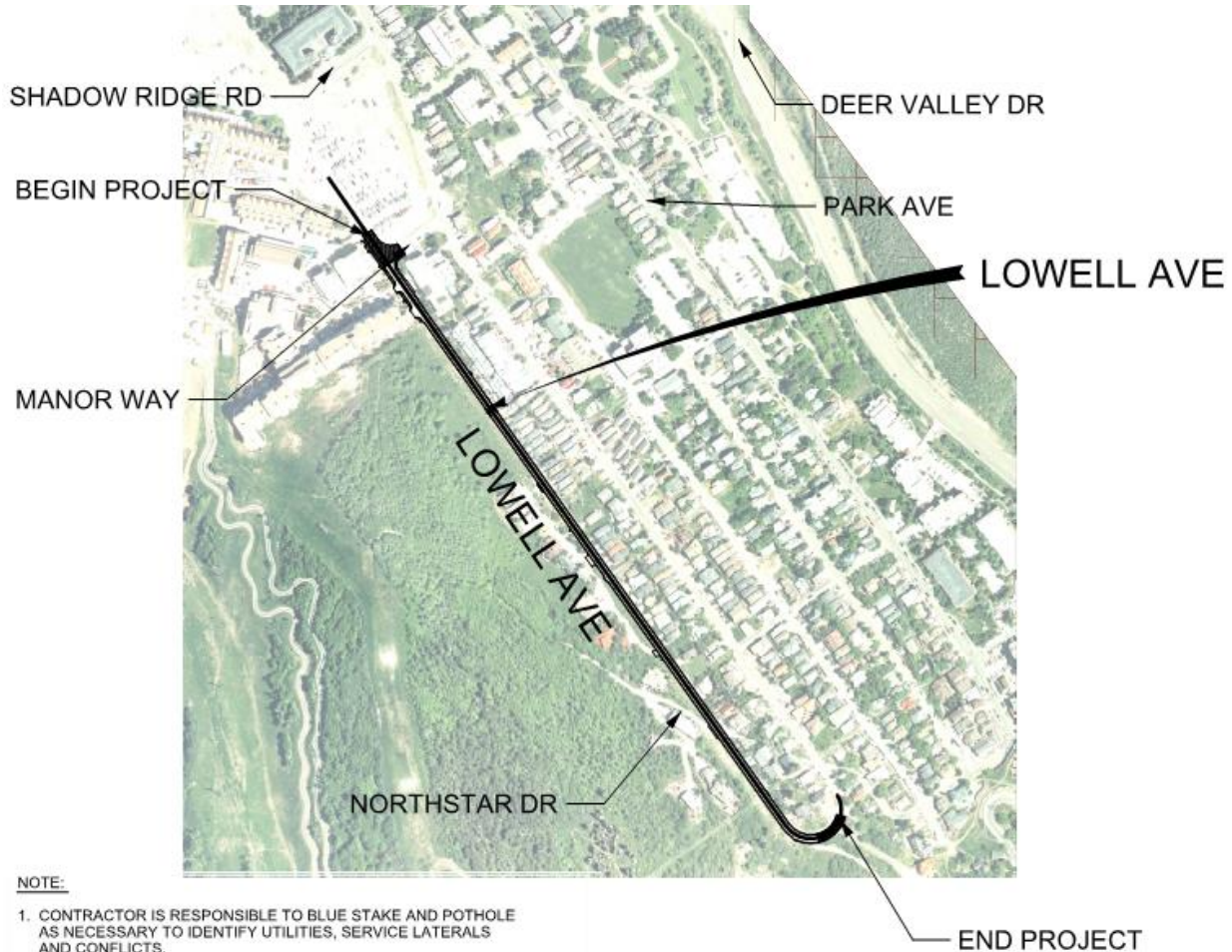


Exhibit "A"
To
Reimbursement Agreement

(Depiction and Description of Lowell Avenue)



NOTE:

1. CONTRACTOR IS RESPONSIBLE TO BLUE STAKE AND POTHOLE AS NECESSARY TO IDENTIFY UTILITIES, SERVICE LATERALS AND CONFLICTS.
2. ALL UTILITY INFORMATION PROVIDED IS THE BEST INFORMATION AVAILABLE. CONTRACTOR IS RESPONSIBLE TO VERIFY ALL UTILITY INFORMATION, INCLUDING MISSING UTILITIES AND UTILITIES SHOWN INCORRECTLY.

The Project consists of furnishing all labor, tools, materials, equipment, transportation and services required for the construction of the above described project as included in the Contract Documents; consisting of the following items of work: 1. Roadway improvements including asphalt paving, base course, and concrete gutters 2. Storm drain including catch basins, manholes, reinforced concrete pipe and corrugated plastic pipe 3. 8 inch C900 PVC waterline, fittings, valves, services, meter boxes, temporary water bypass, and surface restoration 4. 8 inch PVC SDR 35 sanitary sewer, manholes, laterals, and temporary sewer bypass. All in accordance with the Drawings and Specifications prepared by Stanley Consultants, Inc., and Bowen Collins and Associates for Park City Municipal Corporation.