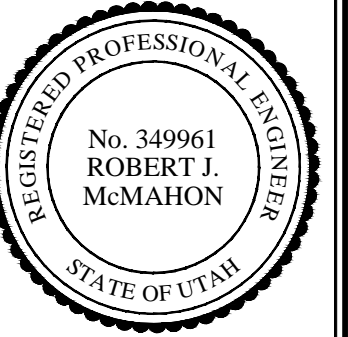


DATE:
NOV 20, 2017
PROJECT NO.:
04-16-02
FILE:
TREASURE

REVISIONS	DATE



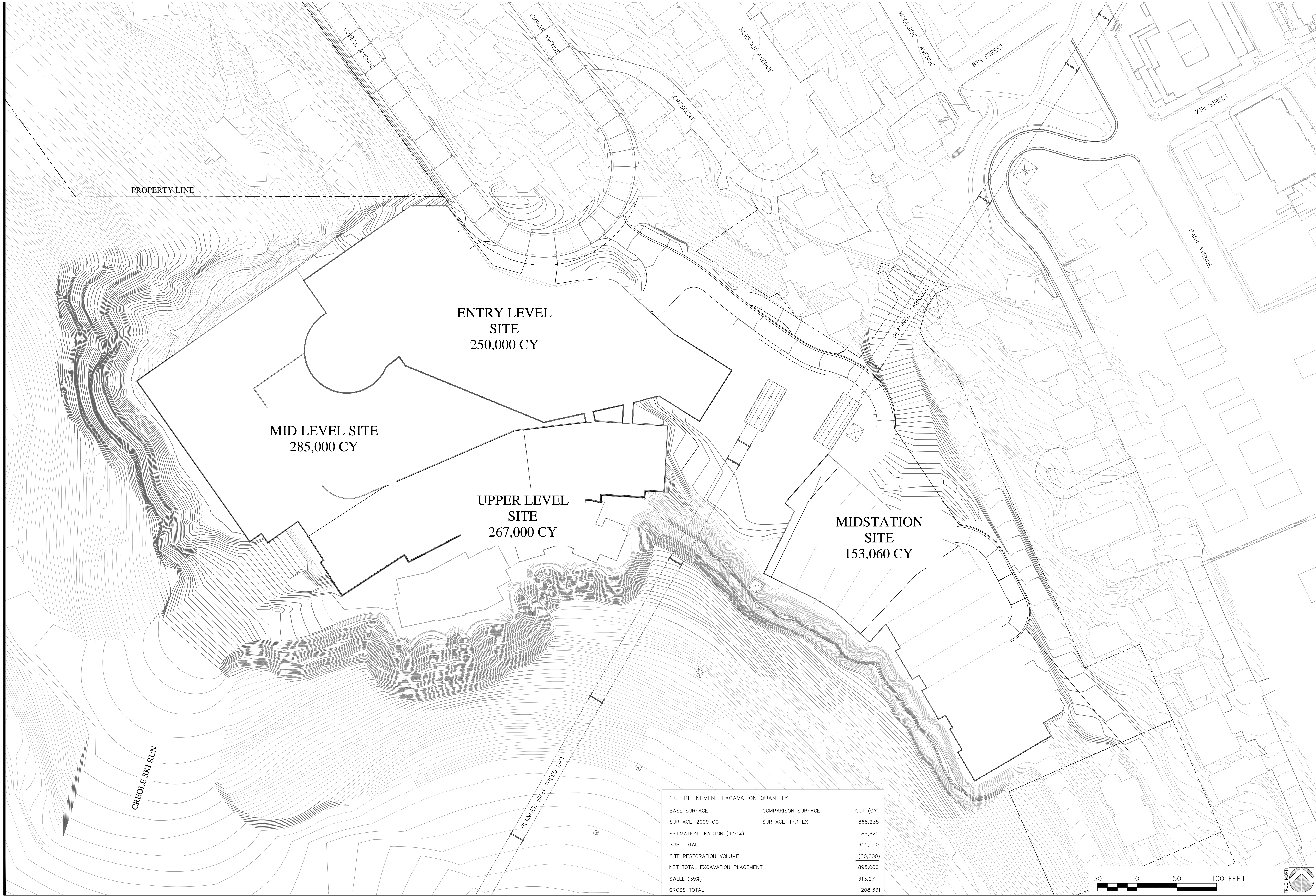
ALTA ENGINEERING INC.
CIVIL ENGINEERING • LAND PLANNING
SURVEYING • PROJECT MANAGEMENT
PO BOX 2864 PARK CITY, UTAH 84302 435-649-9191

FOR: MPE INC.

**TREASURE
REFINEMENT 17.1
EXCAVATION VOLUMES**

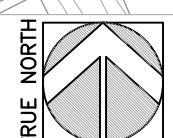
SHEET NO:

E1.0



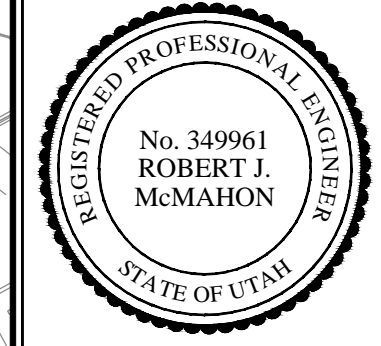
17.1 REFINEMENT EXCAVATION QUANTITY

BASE SURFACE	COMPARISON SURFACE	CUT (CY)
SURFACE-2009 OG	SURFACE-17.1 EX	868,235
ESTIMATION FACTOR (+10%)		86,825
SUB TOTAL		955,060
SITE RESTORATION VOLUME		(60,000)
NET TOTAL EXCAVATION PLACEMENT		895,060
SWELL (35%)		313,271
GROSS TOTAL		1,208,331



DATE:
NOV 20, 2017
PROJECT NO.:#
01-01-01
FILE:
PROJECTS\MOHLER

REVISIONS	DATE



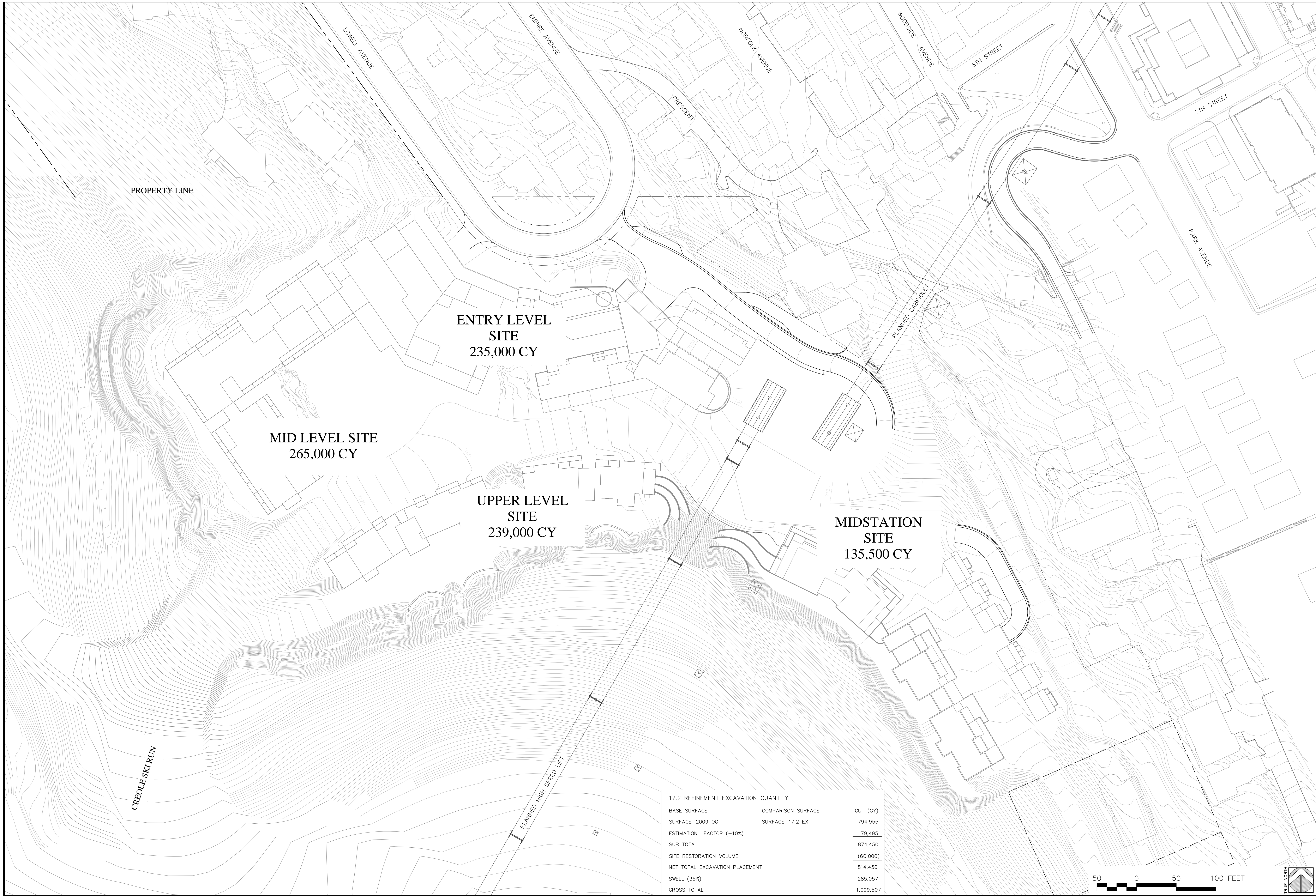
ALTA ENGINEERING INC.
CIVIL ENGINEERING • LAND PLANNING
SURVEYING • PROJECT MANAGEMENT
PO BOX 2864 PARK CITY, UTAH 84060 435-640-8191

FOR: MPE INC

**TREASURE
REFINEMENT 17.2
EXCAVATION VOLUMES**

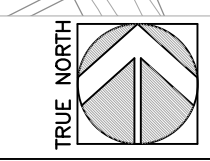
SHEET NO:

E 1.1



17.2 REFINEMENT EXCAVATION QUANTITY

BASE SURFACE	COMPARISON SURFACE	CUT (CY)
SURFACE-2009 OG	SURFACE-17.2 EX	794,955
ESTIMATION FACTOR (+10%)		79,495
SUB TOTAL		874,450
SITE RESTORATION VOLUME		(60,000)
NET TOTAL EXCAVATION PLACEMENT		814,450
SWELL (35%)		285,057
GROSS TOTAL		1,099,507



DATE:
NOV 20, 2017
PROJECT NO.:
04-16-02
FILE:
TREASURE

REVISIONS	DATE

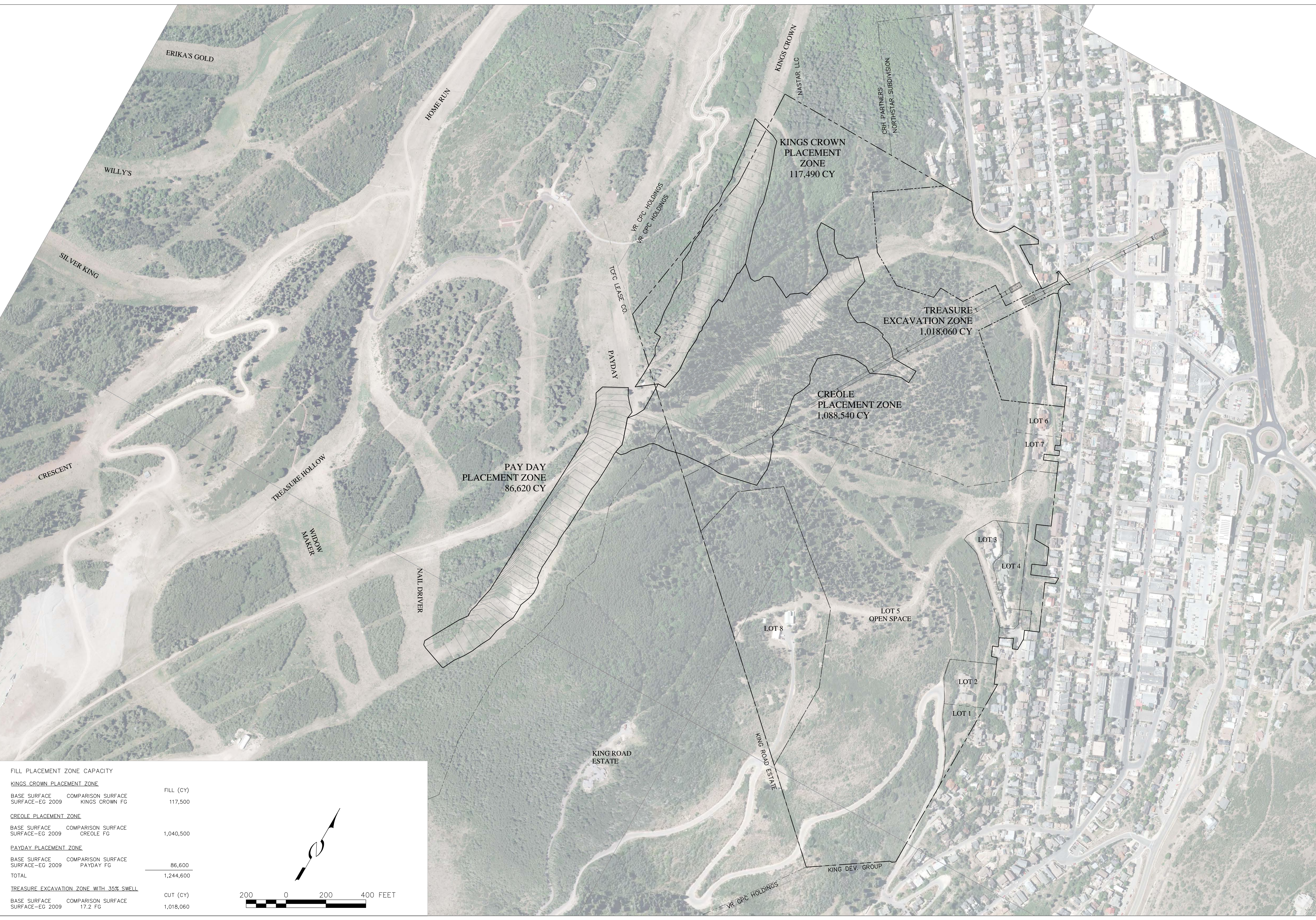


ALTA ENGINEERING INC.
CIVIL ENGINEERING • LAND PLANNING
SURVEYING • PROJECT MANAGEMENT
PO BOX 2864 PARK CITY, UTAH 84302 435.648.8191

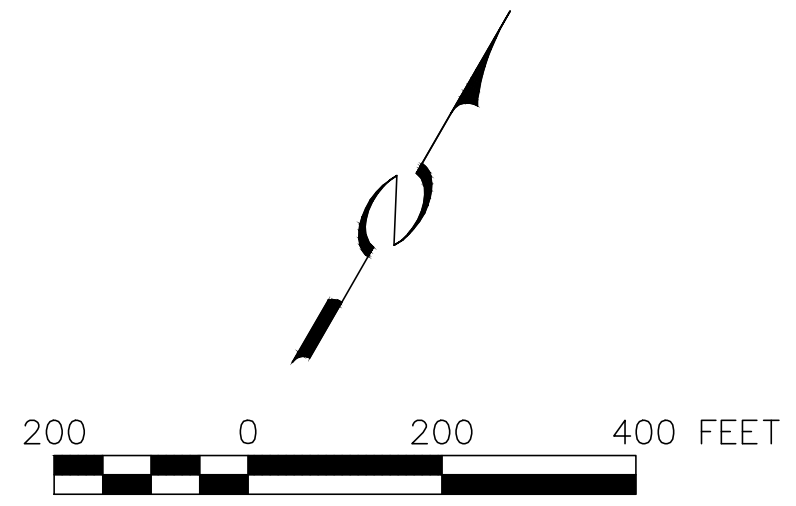
FOR: MPE INC.

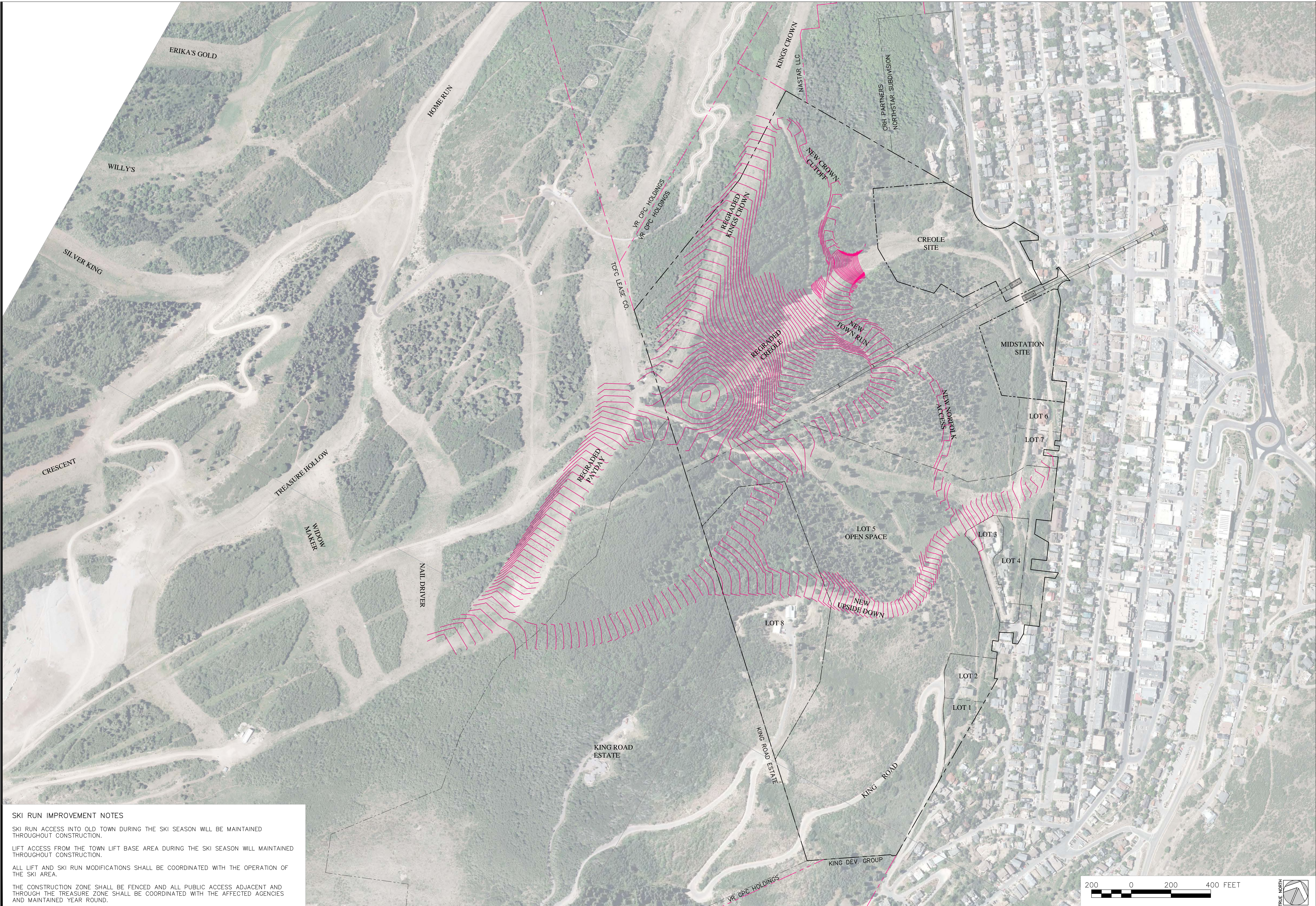
**TREASURE
REFINEMENT 17.2
MATERIAL PLACEMENT ZONES**

SHEET NO:
E2.0



FILL PLACEMENT ZONE CAPACITY		
KINGS CROWN PLACEMENT ZONE		
BASE SURFACE	COMPARISON SURFACE	FILL (CY)
SURFACE-EG 2009	KINGS CROWN FG	117,500
CREOLE PLACEMENT ZONE		
BASE SURFACE	COMPARISON SURFACE	FILL (CY)
SURFACE-EG 2009	CREOLE FG	1,040,500
PAYDAY PLACEMENT ZONE		
BASE SURFACE	COMPARISON SURFACE	FILL (CY)
SURFACE-EG 2009	PAYDAY FG	86,600
TOTAL		1,244,600
TREASURE EXCAVATION ZONE WITH 35% SWELL		
BASE SURFACE	COMPARISON SURFACE	CUT (CY)
SURFACE-EG 2009	17.2 FG	1,018,060





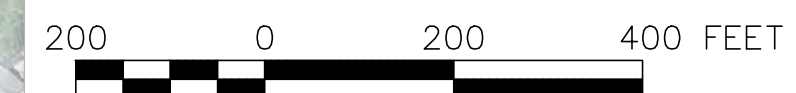
SKI RUN IMPROVEMENT NOTES

SKI RUN ACCESS INTO OLD TOWN DURING THE SKI SEASON WILL BE MAINTAINED THROUGHOUT CONSTRUCTION.

LIFT ACCESS FROM THE TOWN LIFT BASE AREA DURING THE SKI SEASON WILL MAINTAINED THROUGHOUT CONSTRUCTION.

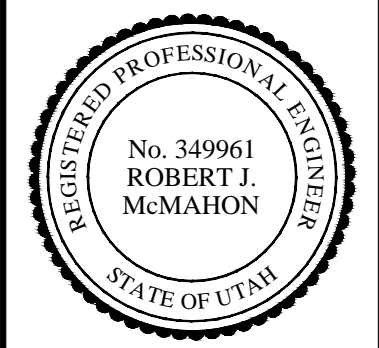
ALL LIFT AND SKI RUN MODIFICATIONS SHALL BE COORDINATED WITH THE OPERATION OF THE SKI AREA.

THE CONSTRUCTION ZONE SHALL BE FENCED AND ALL PUBLIC ACCESS ADJACENT AND THROUGH THE TREASURE ZONE SHALL BE COORDINATED WITH THE AFFECTED AGENCIES AND MAINTAINED YEAR ROUND.



DATE:
NOV 20, 2017
PROJECT NO.:
04-16-02
FILE:
TREASURE

REVISIONS	DATE



ALTA ENGINEERING INC.
CIVIL ENGINEERING • LAND PLANNING
SURVEYING • PROJECT MANAGEMENT
PO BOX 3864 PARK CITY, UTAH 84060 435-645-8191

FOR: MPE INC.

**TREASURE
REFINEMENT 17.2
VICINITY MAP & SKI RUN GRADING**

SHEET NO:
E3.0

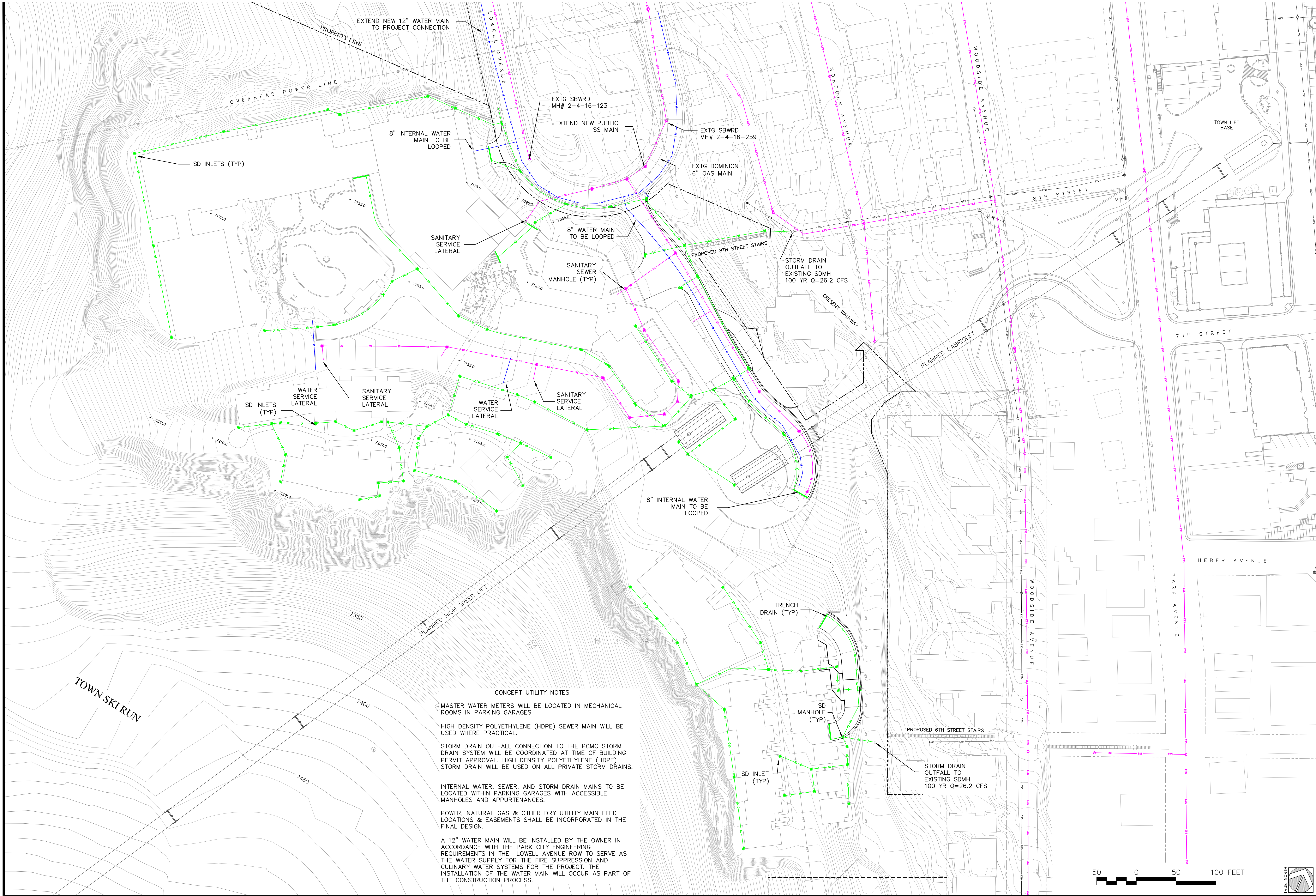
DATE:	NOV 20, 2017
PROJECT NO.:	04-16-02
FILE:	TREASURE
REVISIONS	DATE

ALTA
ENGINEERING
INC.
CIVIL ENGINEERING • LAND PLANNING
SURVEYING • PROJECT MANAGEMENT
PO BOX 2864 PARK CITY, UTAH 84000 435-640-9191

FOR: MPE INC

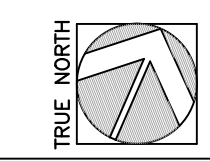
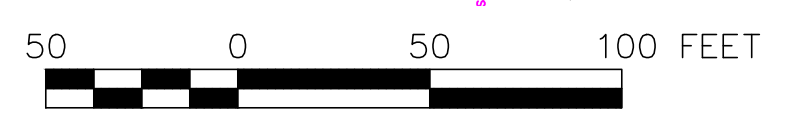
TREASURE
REFINEMENT 17.1
CONCEPT UTILITY PLAN

SHEET NO:
E4.0



CONCEPT UTILITY NOTES

- MASTER WATER METERS WILL BE LOCATED IN MECHANICAL ROOMS IN PARKING GARAGES.
- HIGH DENSITY POLYETHYLENE (HDPE) SEWER MAIN WILL BE USED WHERE PRACTICAL.
- STORM DRAIN OUTFALL CONNECTION TO THE PCMC STORM DRAIN SYSTEM WILL BE COORDINATED AT TIME OF BUILDING PERMIT APPROVAL. HIGH DENSITY POLYETHYLENE (HDPE) STORM DRAIN WILL BE USED ON ALL PRIVATE STORM DRAINS.
- INTERNAL WATER, SEWER, AND STORM DRAIN MAINS TO BE LOCATED WITHIN PARKING GARAGES WITH ACCESSIBLE MANHOLES AND APPURTENANCES.
- POWER, NATURAL GAS & OTHER DRY UTILITY MAIN FEED LOCATIONS & EASEMENTS SHALL BE INCORPORATED IN THE FINAL DESIGN.
- A 12" WATER MAIN WILL BE INSTALLED BY THE OWNER IN ACCORDANCE WITH THE PARK CITY ENGINEERING REQUIREMENTS IN THE LOWELL AVENUE ROW TO SERVE AS THE WATER SUPPLY FOR THE FIRE SUPPRESSION AND CULINARY WATER SYSTEMS FOR THE PROJECT. THE INSTALLATION OF THE WATER MAIN WILL OCCUR AS PART OF THE CONSTRUCTION PROCESS.



DATE:
NOV 20, 2017
PROJECT NO.:
04-16-02
FILE:
TREASURE

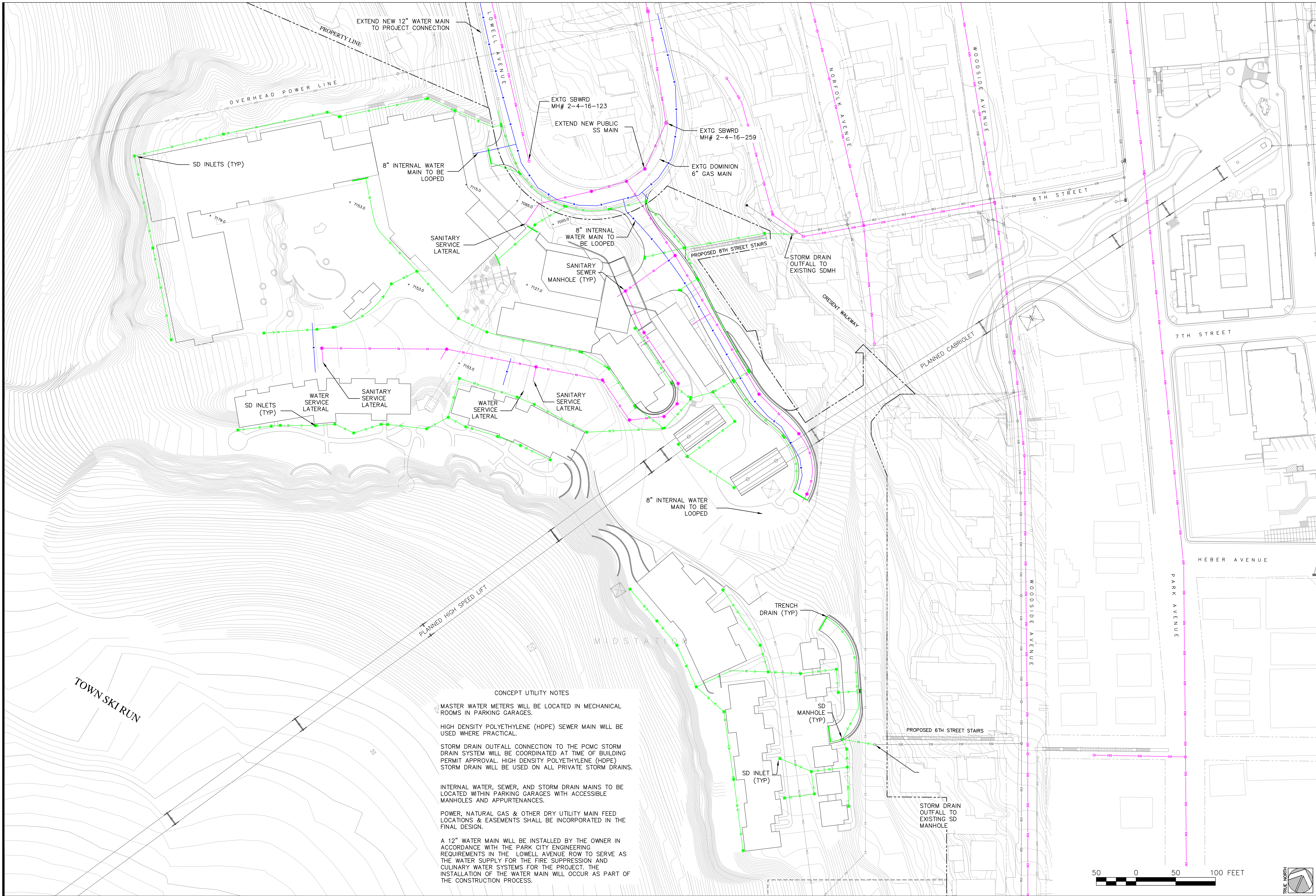
REVISIONS	DATE

ALTA ENGINEERING INC.
CIVIL ENGINEERING • LAND PLANNING
SURVEYING • PROJECT MANAGEMENT
PO BOX 2864 PARK CITY, UTAH 84060 435-646-9191

FOR: MPE INC

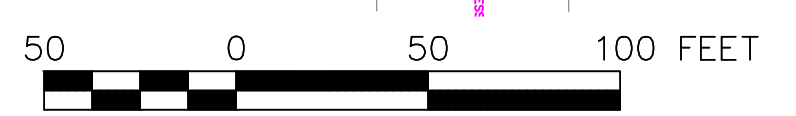
TREASURE
REFINEMENT 17.2
CONCEPT UTILITY PLAN

SHEET NO:
E4.1



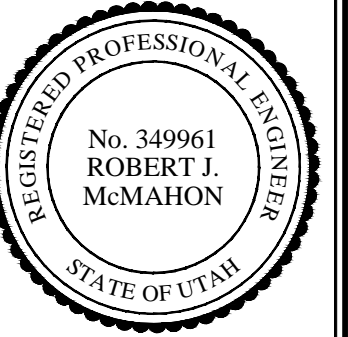
CONCEPT UTILITY NOTES

- MASTER WATER METERS WILL BE LOCATED IN MECHANICAL ROOMS IN PARKING GARAGES.
- HIGH DENSITY POLYETHYLENE (HDPE) SEWER MAIN WILL BE USED WHERE PRACTICAL.
- STORM DRAIN OUTFALL CONNECTION TO THE PCMC STORM DRAIN SYSTEM WILL BE COORDINATED AT TIME OF BUILDING PERMIT APPROVAL. HIGH DENSITY POLYETHYLENE (HDPE) STORM DRAIN WILL BE USED ON ALL PRIVATE STORM DRAINS.
- INTERNAL WATER, SEWER, AND STORM DRAIN MAINS TO BE LOCATED WITHIN PARKING GARAGES WITH ACCESSIBLE MANHOLES AND APPURTENANCES.
- POWER, NATURAL GAS & OTHER DRY UTILITY MAIN FEED LOCATIONS & EASEMENTS SHALL BE INCORPORATED IN THE FINAL DESIGN.
- A 12" WATER MAIN WILL BE INSTALLED BY THE OWNER IN ACCORDANCE WITH THE PARK CITY ENGINEERING REQUIREMENTS IN THE LOWELL AVENUE ROW TO SERVE AS THE WATER SUPPLY FOR THE FIRE SUPPRESSION AND CULINARY WATER SYSTEMS FOR THE PROJECT. THE INSTALLATION OF THE WATER MAIN WILL OCCUR AS PART OF THE CONSTRUCTION PROCESS.



DATE:
NOV 20, 2017
PROJECT NO.:
04-16-02
FILE:
TREASURE

REVISIONS	DATE



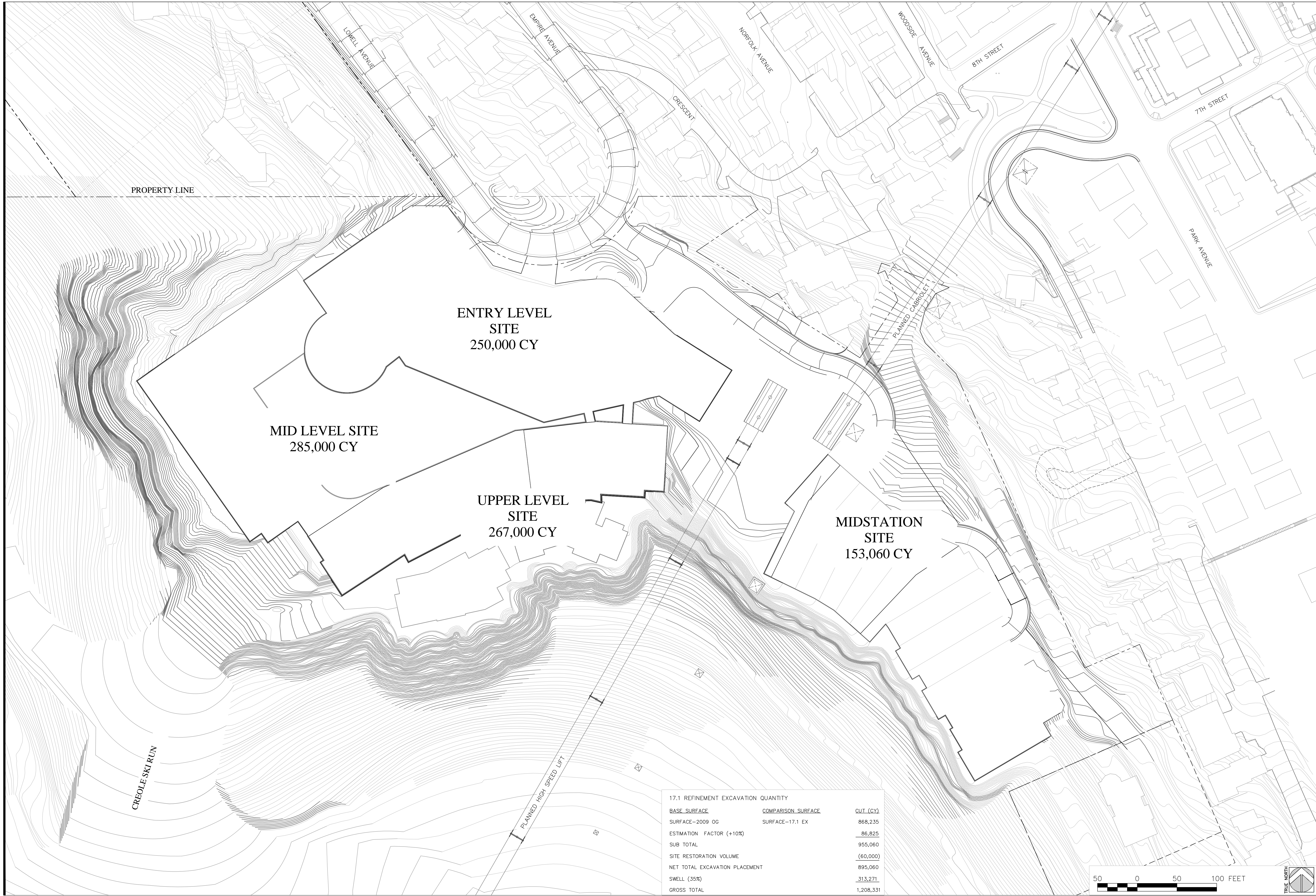
ALTA ENGINEERING INC.
CIVIL ENGINEERING • LAND PLANNING
SURVEYING • PROJECT MANAGEMENT
PO BOX 2864 PARK CITY, UTAH 84060 435-649-9191

FOR: MPE INC.

**TREASURE
REFINEMENT 17.1
EXCAVATION VOLUMES**

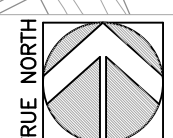
SHEET NO:

E1.0



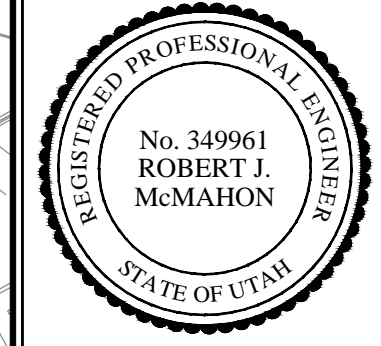
17.1 REFINEMENT EXCAVATION QUANTITY

BASE SURFACE	COMPARISON SURFACE	CUT (CY)
SURFACE-2009 OG	SURFACE-17.1 EX	868,235
ESTIMATION FACTOR (+10%)		86,825
SUB TOTAL		955,060
SITE RESTORATION VOLUME		(60,000)
NET TOTAL EXCAVATION PLACEMENT		895,060
SWELL (35%)		313,271
GROSS TOTAL		1,208,331



DATE:
NOV 20, 2017
PROJECT NO.:#
01-01-01
FILE:
PROJECTS\MOHLER

REVISIONS	DATE



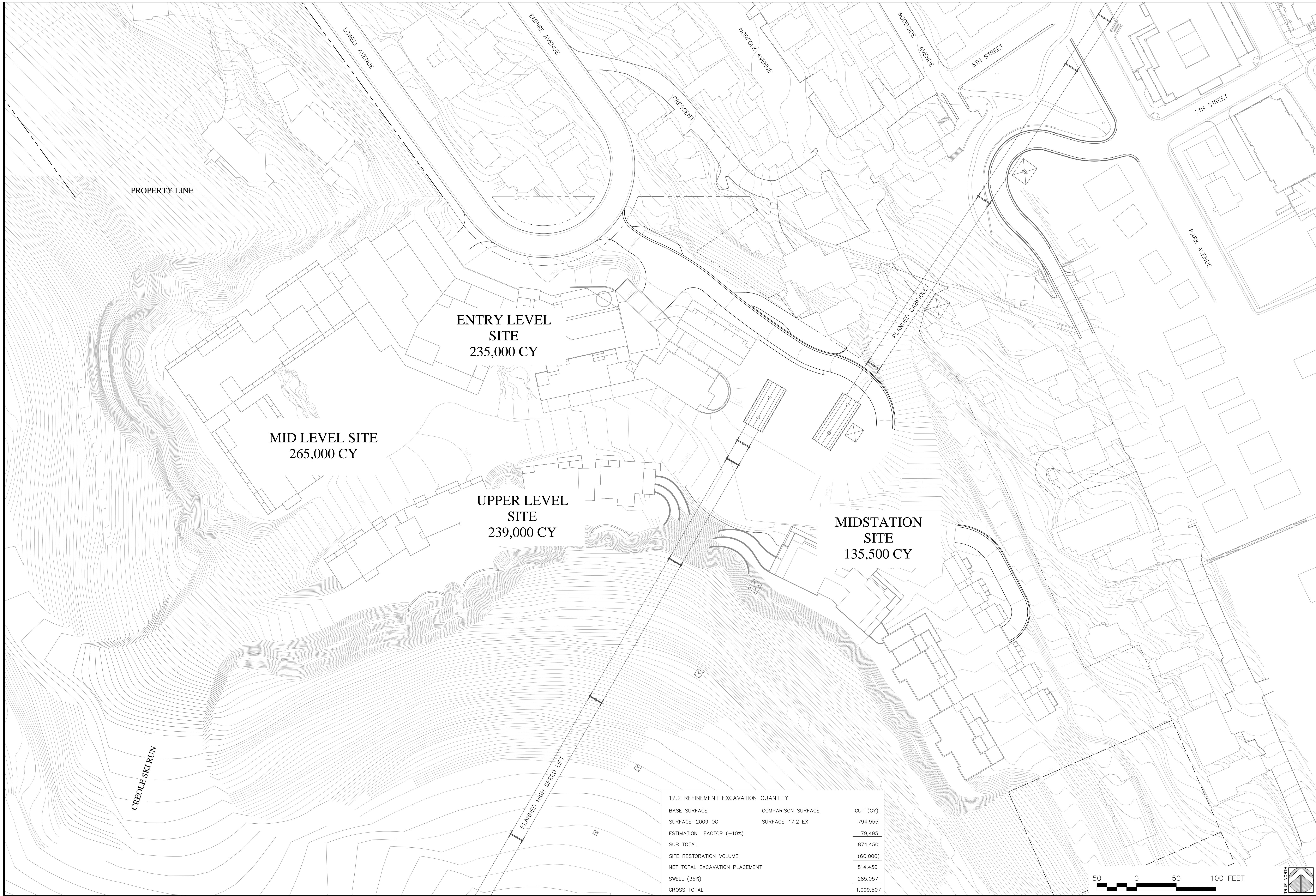
ALTA ENGINEERING INC.
CIVIL ENGINEERING • LAND PLANNING
SURVEYING • PROJECT MANAGEMENT
PO BOX 2864 PARK CITY, UTAH 84060 435-640-8191

FOR: MPE INC

**TREASURE
REFINEMENT 17.2
EXCAVATION VOLUMES**

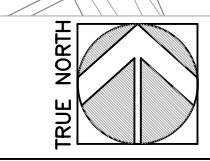
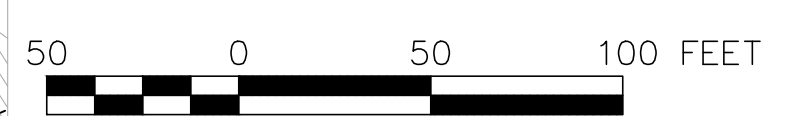
SHEET NO:

E 1.1

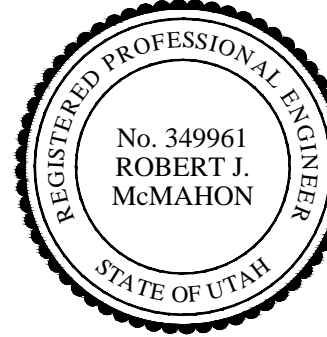


17.2 REFINEMENT EXCAVATION QUANTITY

BASE SURFACE	COMPARISON SURFACE	CUT (CY)
SURFACE-2009 OG	SURFACE-17.2 EX	794,955
ESTIMATION FACTOR (+10%)		79,495
SUB TOTAL		874,450
SITE RESTORATION VOLUME		(60,000)
NET TOTAL EXCAVATION PLACEMENT		814,450
SWELL (35%)		285,057
GROSS TOTAL		1,099,507



DATE:	NOV 20, 2017
PROJECT NO.:	04-16-02
FILE:	TREASURE
REVISIONS	DATE
▲	
▲	
▲	
▲	
▲	

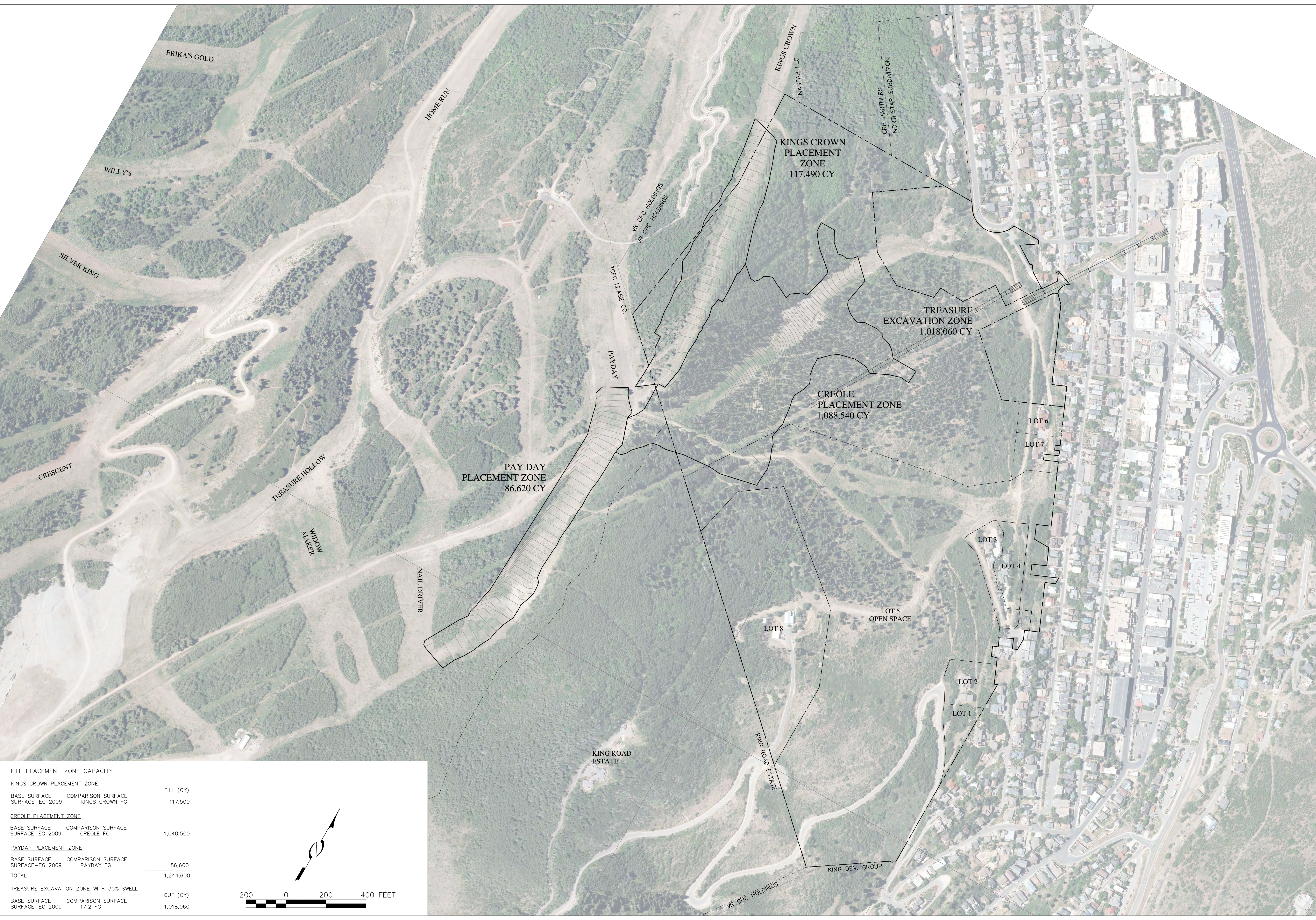


ALTA ENGINEERING INC.
 CIVIL ENGINEERING • LAND PLANNING
 SURVEYING • PROJECT MANAGEMENT
 PO BOX 2864 PARK CITY, UTAH 84302 435-648-8191

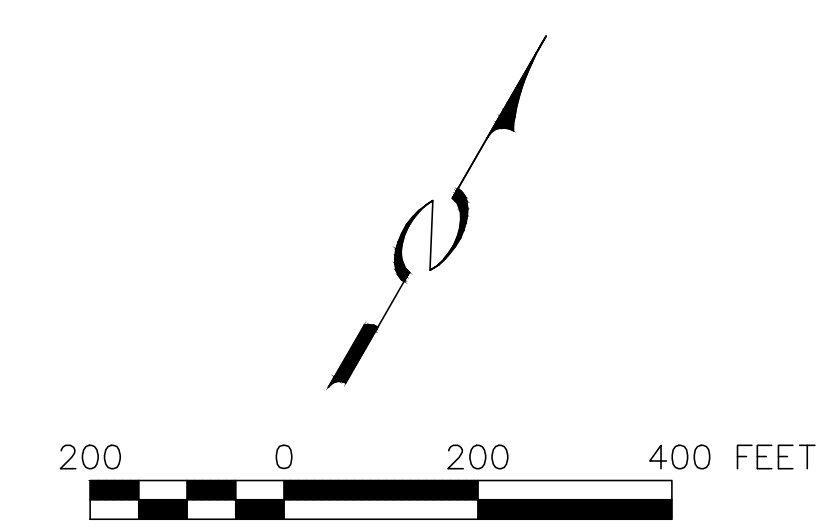
FOR: MPE INC.

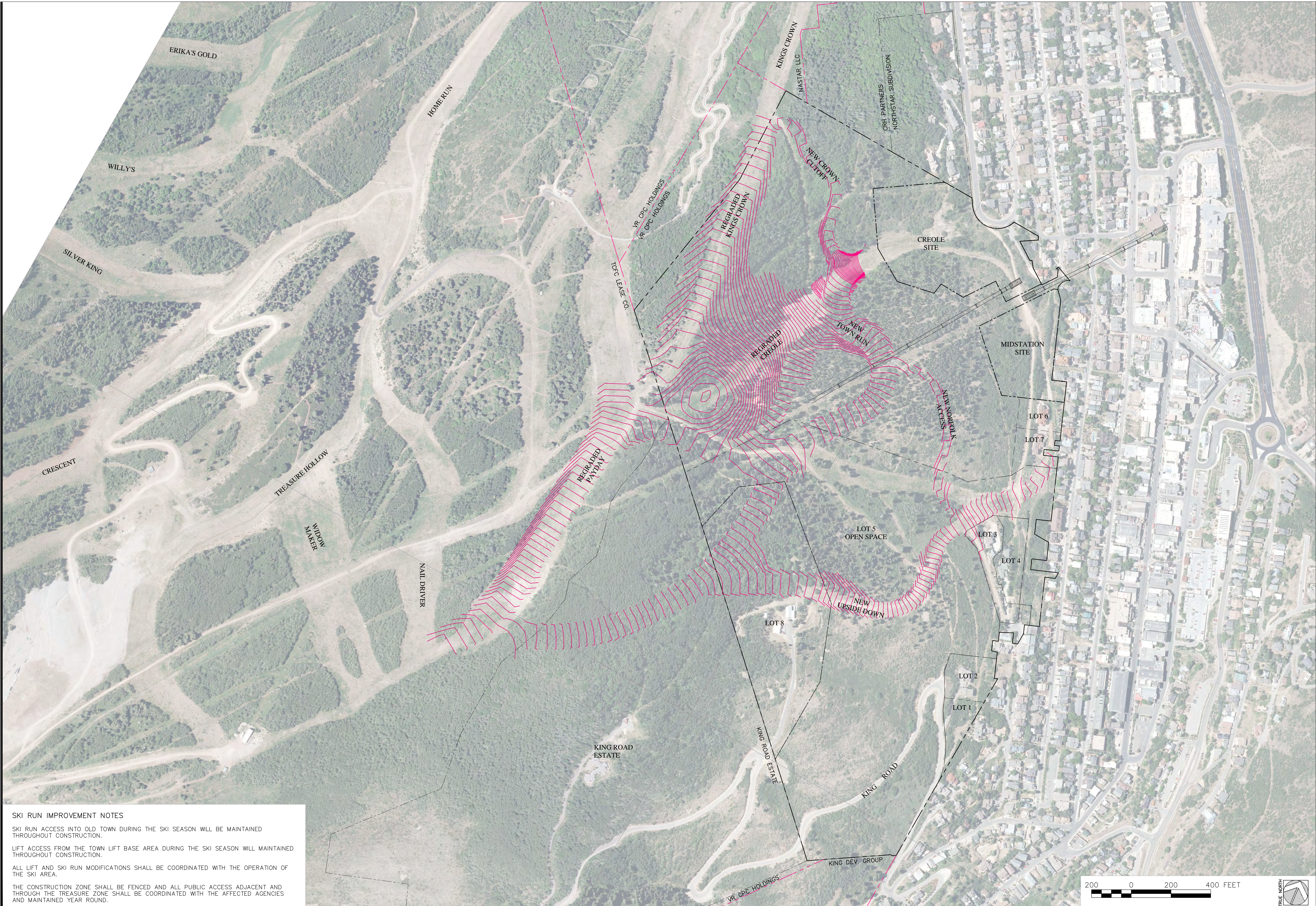
**TREASURE
 REFINEMENT 17.2
 MATERIAL PLACEMENT ZONES**

SHEET NO:
E2.0



FILL PLACEMENT ZONE CAPACITY		
KINGS CROWN PLACEMENT ZONE		
BASE SURFACE	COMPARISON SURFACE	FILL (CY)
SURFACE-EG 2009	KINGS CROWN FG	117,500
CREOLE PLACEMENT ZONE		
BASE SURFACE	COMPARISON SURFACE	
SURFACE-EG 2009	CREOLE FG	1,040,500
PAYDAY PLACEMENT ZONE		
BASE SURFACE	COMPARISON SURFACE	
SURFACE-EG 2009	PAYDAY FG	86,600
TOTAL		1,244,600
TREASURE EXCAVATION ZONE WITH 35% SWELL		
BASE SURFACE	COMPARISON SURFACE	CUT (CY)
SURFACE-EG 2009	17.2 FG	1,018,060





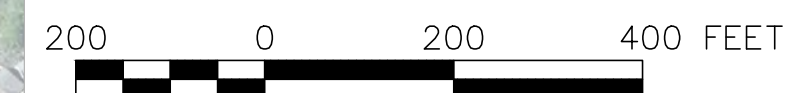
SKI RUN IMPROVEMENT NOTES

SKI RUN ACCESS INTO OLD TOWN DURING THE SKI SEASON WILL BE MAINTAINED THROUGHOUT CONSTRUCTION.

LIFT ACCESS FROM THE TOWN LIFT BASE AREA DURING THE SKI SEASON WILL MAINTAINED THROUGHOUT CONSTRUCTION.

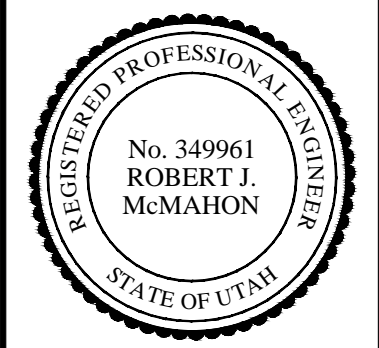
ALL LIFT AND SKI RUN MODIFICATIONS SHALL BE COORDINATED WITH THE OPERATION OF THE SKI AREA.

THE CONSTRUCTION ZONE SHALL BE FENCED AND ALL PUBLIC ACCESS ADJACENT AND THROUGH THE TREASURE ZONE SHALL BE COORDINATED WITH THE AFFECTED AGENCIES AND MAINTAINED YEAR ROUND.



DATE:
NOV 20, 2017
PROJECT NO.:
04-16-02
FILE:
TREASURE

REVISIONS	DATE



ALTA ENGINEERING INC.
CIVIL ENGINEERING • LAND PLANNING
SURVEYING • PROJECT MANAGEMENT
PO BOX 3864 PARK CITY, UTAH 84060 435-645-8191

FOR: MPE INC.
VICINITY MAP & SKI RUN GRADING

TREASURE
REFINEMENT 17.2
VICINITY MAP & SKI RUN GRADING

SHEET NO:
E3.0

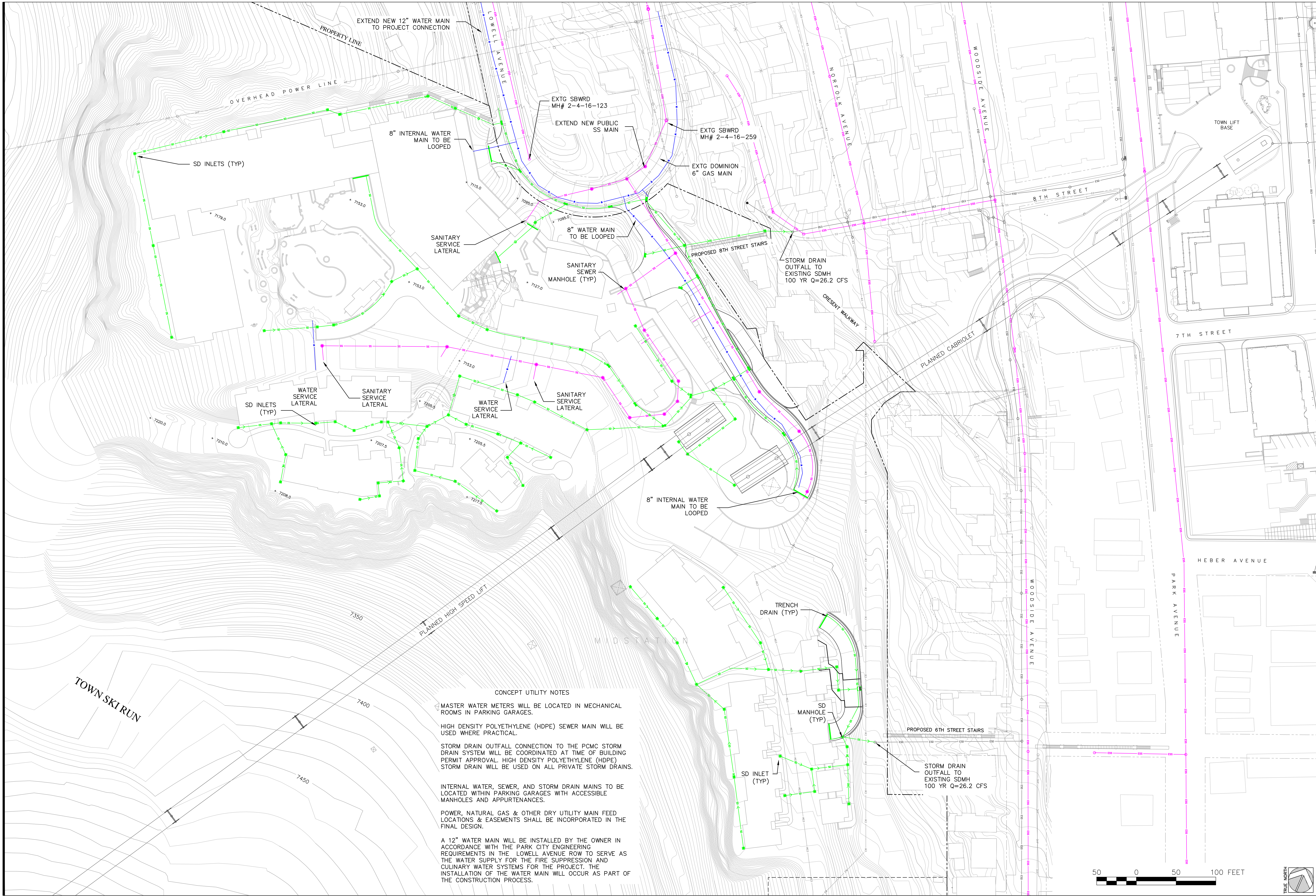
DATE:	NOV 20, 2017
PROJECT NO.:	04-16-02
FILE:	TREASURE
REVISIONS	DATE

ALTA ENGINEERING INC.
 CIVIL ENGINEERING • LAND PLANNING
 SURVEYING • PROJECT MANAGEMENT
 PO BOX 2864 PARK CITY, UTAH 84002 435-640-9191

FOR: MPE INC

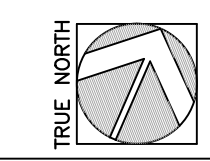
TREASURE
 REFINEMENT 17.1
 CONCEPT UTILITY PLAN

SHEET NO:
E4.0



CONCEPT UTILITY NOTES

- MASTER WATER METERS WILL BE LOCATED IN MECHANICAL ROOMS IN PARKING GARAGES.
- HIGH DENSITY POLYETHYLENE (HDPE) SEWER MAIN WILL BE USED WHERE PRACTICAL.
- STORM DRAIN OUTFALL CONNECTION TO THE PCMC STORM DRAIN SYSTEM WILL BE COORDINATED AT TIME OF BUILDING PERMIT APPROVAL. HIGH DENSITY POLYETHYLENE (HDPE) STORM DRAIN WILL BE USED ON ALL PRIVATE STORM DRAINS.
- INTERNAL WATER, SEWER, AND STORM DRAIN MAINS TO BE LOCATED WITHIN PARKING GARAGES WITH ACCESSIBLE MANHOLES AND APPURTENANCES.
- POWER, NATURAL GAS & OTHER DRY UTILITY MAIN FEED LOCATIONS & EASEMENTS SHALL BE INCORPORATED IN THE FINAL DESIGN.
- A 12" WATER MAIN WILL BE INSTALLED BY THE OWNER IN ACCORDANCE WITH THE PARK CITY ENGINEERING REQUIREMENTS IN THE LOWELL AVENUE ROW TO SERVE AS THE WATER SUPPLY FOR THE FIRE SUPPRESSION AND CULINARY WATER SYSTEMS FOR THE PROJECT. THE INSTALLATION OF THE WATER MAIN WILL OCCUR AS PART OF THE CONSTRUCTION PROCESS.



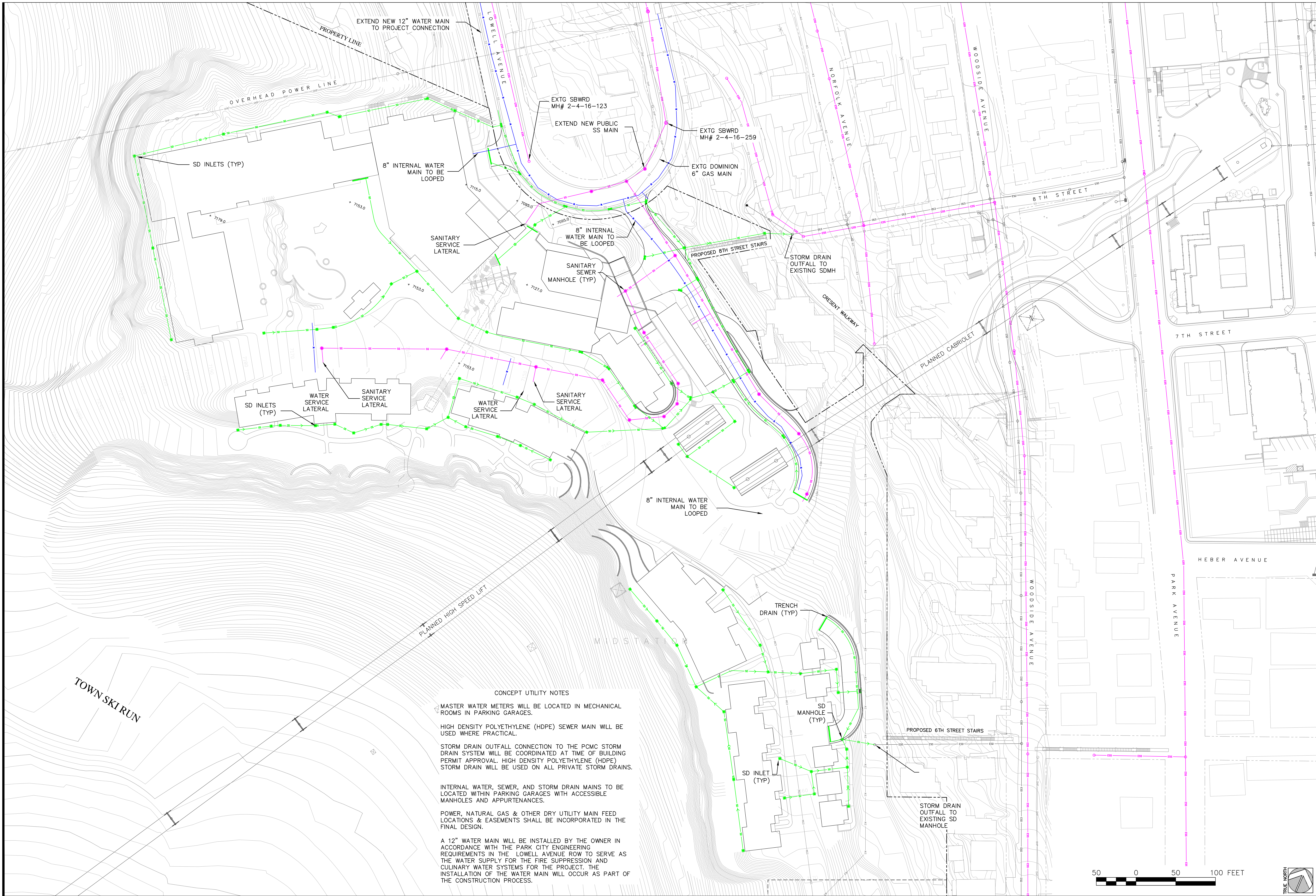
DATE:	NOV 20, 2017
PROJECT NO.:	04-16-02
FILE:	TREASURE
REVISIONS	DATE

ALTA
ENGINEERING
INC.
CIVIL ENGINEERING • LAND PLANNING
SURVEYING • PROJECT MANAGEMENT
PO BOX 2864 PARK CITY, UTAH 84060 435-649-8191

FOR: MPE INC

TREASURE
REFINEMENT 17.2
CONCEPT UTILITY PLAN

SHEET NO:
E4.1



CONCEPT UTILITY NOTES

- MASTER WATER METERS WILL BE LOCATED IN MECHANICAL ROOMS IN PARKING GARAGES.
- HIGH DENSITY POLYETHYLENE (HDPE) SEWER MAIN WILL BE USED WHERE PRACTICAL.
- STORM DRAIN OUTFALL CONNECTION TO THE PCMC STORM DRAIN SYSTEM WILL BE COORDINATED AT TIME OF BUILDING PERMIT APPROVAL. HIGH DENSITY POLYETHYLENE (HDPE) STORM DRAIN WILL BE USED ON ALL PRIVATE STORM DRAINS.
- INTERNAL WATER, SEWER, AND STORM DRAIN MAINS TO BE LOCATED WITHIN PARKING GARAGES WITH ACCESSIBLE MANHOLES AND APPURTENANCES.
- POWER, NATURAL GAS & OTHER DRY UTILITY MAIN FEED LOCATIONS & EASEMENTS SHALL BE INCORPORATED IN THE FINAL DESIGN.
- A 12" WATER MAIN WILL BE INSTALLED BY THE OWNER IN ACCORDANCE WITH THE PARK CITY ENGINEERING REQUIREMENTS IN THE LOWELL AVENUE ROW TO SERVE AS THE WATER SUPPLY FOR THE FIRE SUPPRESSION AND CULINARY WATER SYSTEMS FOR THE PROJECT. THE INSTALLATION OF THE WATER MAIN WILL OCCUR AS PART OF THE CONSTRUCTION PROCESS.

