

Treasure - Park City, Utah

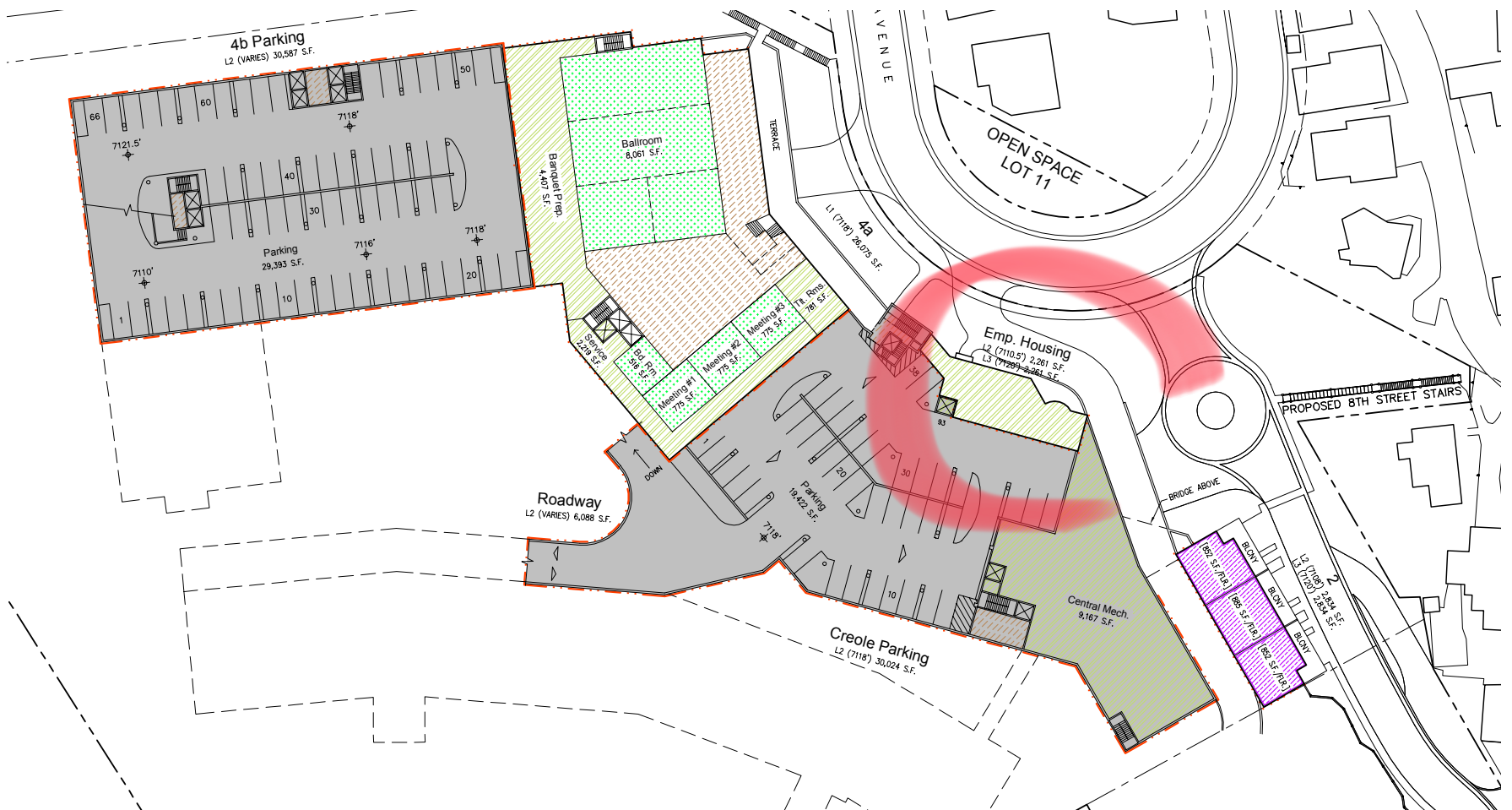
Planning Commission Presentation October 25, 2017

SPMP Condition #10 - Compliance with employee housing requirement at the time of CUP application.

Goals:

1) Explain Applicants Compliance and Position

- a. Required to comply with Resolution 17-99 (1999)
- b. Agreed to comply with Resolution 2007
- c. 6669 square feet on site
- d. Plus fees in lieu of
- e. Approximately 3.5 million dollars
- f. Approximately 2 million in addition to required amount





Slide 3-20171025 EMPLOYEE HOUSING