

Treasure Hill

General Comments
Arnie Rusten, PE, SE
1058 Lowell Avenue
10/25/2017

Community Vision & Values

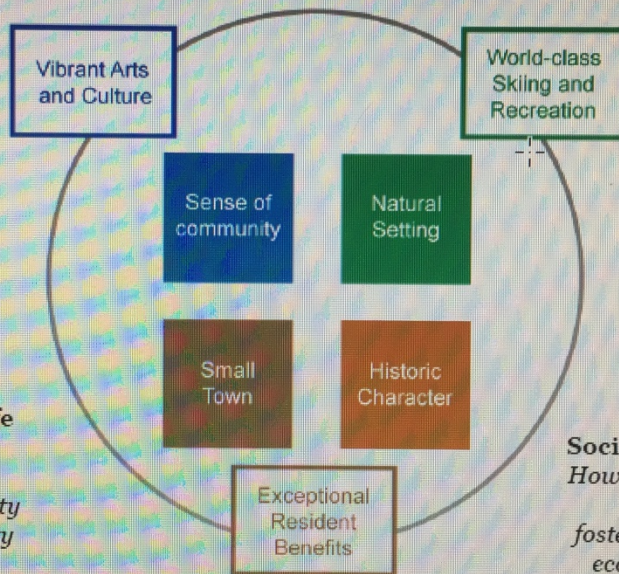


Keeping Park City "Park City"

sense of community | natural setting | small town | historic character

Environmental Impact

How will any proposed activity demonstrate responsible environmental stewardship?



Quality of Life Impact

How will any proposed activity "make Park City Park City"?

Social Equity Impact

How will any proposed activity foster community and economic diversity?

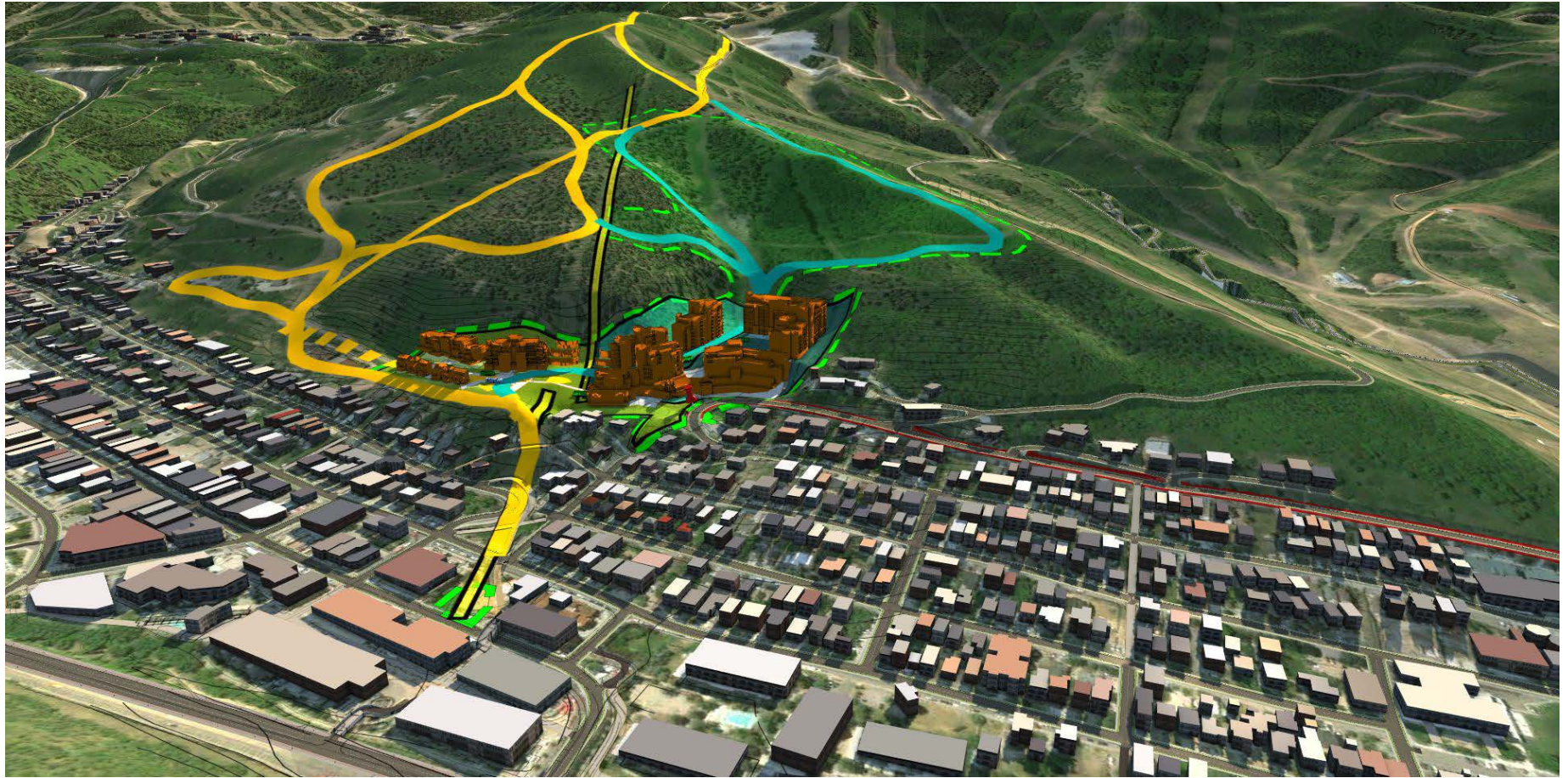
Economic Impact

Does the activity offset its impacts on the community, contribute to a sustainable economy, and increase our ability to provide public services?

PARK CITY

1884

volves nearly 1 million square feet of development on a hillside overlooking Old Town along the route of the Town Lift. The Sweeney family secured development rights on the land and nearby parcels in the 1980s. The land is now under the ownership of the Treasure partnership, consisting of the Sweeney family and a firm called Park City II, LLC. The partnership is seeking another important permit needed before the project can proceed. Critics claim Treasure would overwhelm surrounding Old Town with lots of traffic and large buildings.











10/18/17



10/18/17

7) Blasting by Robinson Construction

- a. According to regulations (which are strict and highly regulated)
- b. Small, controlled, incremental, appropriate monitoring
- c. Safe
- d. Quiet
- e. Minimal dust
- f. Less time

put at the top of the King's Crown run at Park City Mountain Resort.

Sweeney, meanwhile, said in an interview the explosives that would be used during the excavation would be tightly controlled. The blasts would be "well-regulated, well-developed. I would say it's a science."

"They're going to be small. They're going to be scattered. They're going to be in intervals," Sweeney said, adding that the noise from the blasting would be "essentially imperceptible to the neighbors."

Table 7-4. Average maximum noise levels at 50 feet from common construction equipment.

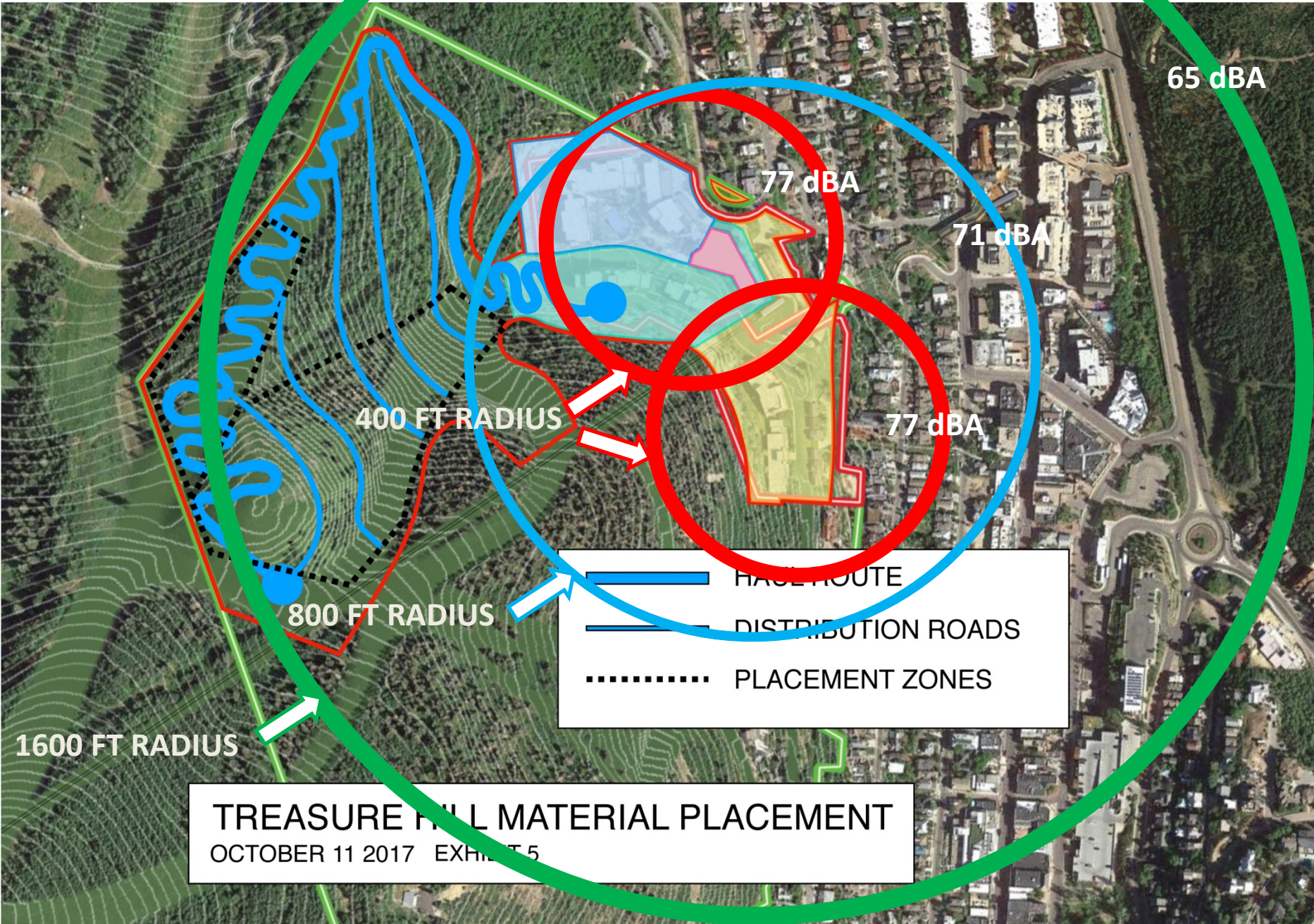
Equipment Description	Impact Device?	Actual Measured Average at 50 feet (dBA)
Auger Drill Rig	No	84
Backhoe	No	78
Blasting	Yes	94
Chain Saw	No	84
Compactor (ground)	No	83
Compressor (air)	No	78
Concrete Mixer Truck	No	79
Concrete Saw	No	90
Crane	No	81
Dozer	No	82
Drill Rig Truck	No	79
Dump Truck	No	76
Excavator	No	81
Flat Bed Truck	No	74
Front End Loader	No	79
Grader	No	89
Grapple (on backhoe)	No	87
Horizontal Boring Hydr. Jack	No	82
Impact Pile Driver a	Yes	110
Jackhammer	Yes	89
Mounted Impact Hammer (hoe ram)	Yes	90
Pneumatic Tools	No	85
Rock Drill	No	81



HEAVY CONSTRUCTION EQUIPMENT

Table 7-2. Example of noise reduction over distance from a 95 dBA source showing variation between construction point source and line source. Noise Attenuation

Distance from Source (feet)	Point Source (-6 dB)	Line Source (-3 dB)
50	95 dBA	95 dBA
100	89 dBA	92 dBA
200	83 dBA	89 dBA
400	77 dBA	86 dBA
800	71 dBA	83 dBA
1,600	65 dBA	80 dBA
3,200	59 dBA	77 dBA
6,400	53 dBA	74 dBA



65 dBA

77 dBA

71 dBA

400 FT RADIUS

77 dBA

800 FT RADIUS

- FACE ROUTE
- DISTRIBUTION ROADS
- PLACEMENT ZONES

1600 FT RADIUS

TREASURE HILL MATERIAL PLACEMENT
OCTOBER 11 2017 EXHIBIT 5

7-1. Typical noise levels and possible human responses.

Common Noises	Noise Level (dBA)	Effect
Rocket launching pad (no ear protection)	180	Irreversible hearing loss
Carrier deck jet operation Air raid siren	140	Painfully loud
Thunderclap	130	Painfully loud
Jet takeoff (200 feet) Auto horn (3 feet)	120	Maximum vocal effort
Pile driver Rock concert	110	Extremely loud
Garbage truck Firecrackers	100	Very loud
Heavy truck (50 feet) City traffic	90	Very annoying Hearing damage (8 hours of exposure)
Alarm clock (2 feet) Hair dryer	80	Annoying
Noisy restaurant Freeway traffic Business office	70	Telephone use difficult
Air conditioning unit Conversational speech	60	Intrusive
Light auto traffic (100 feet)	50	Quiet
Living room Bedroom Quiet office	40	Quiet
Library/soft whisper (15 feet)	30	Very quiet
Broadcasting studio	20	Very quiet
	10	Just audible
Threshold of hearing	0	Hearing begins

BROWNS CANYON ROCK CRUSHING OPERATIONS



Phasing, Staging, Construction – Prepared in response to Commission, Staff, Public Comments, and to comply with MPD requirements.

Goals (cont.):

4) Incidentals by Big-D

- a. Limit working hours December-March, holidays, events
- b. Pay attention to what is going on—weatherTypical busy day—number of trucks up Lowell
- c. Keep it all on Lowell, 5' flex space uphill side—6" asphalt 18" base
- d. Keep flex space clear as necessary—snow, lackadaisical parking
- e. Ongoing collaboration with the City and Ski Resort
- f. Communication with neighbors
- g. Keep streets clean

FLEX SPACE – 5 FEET



LOWELL AVENUE 10/18/17



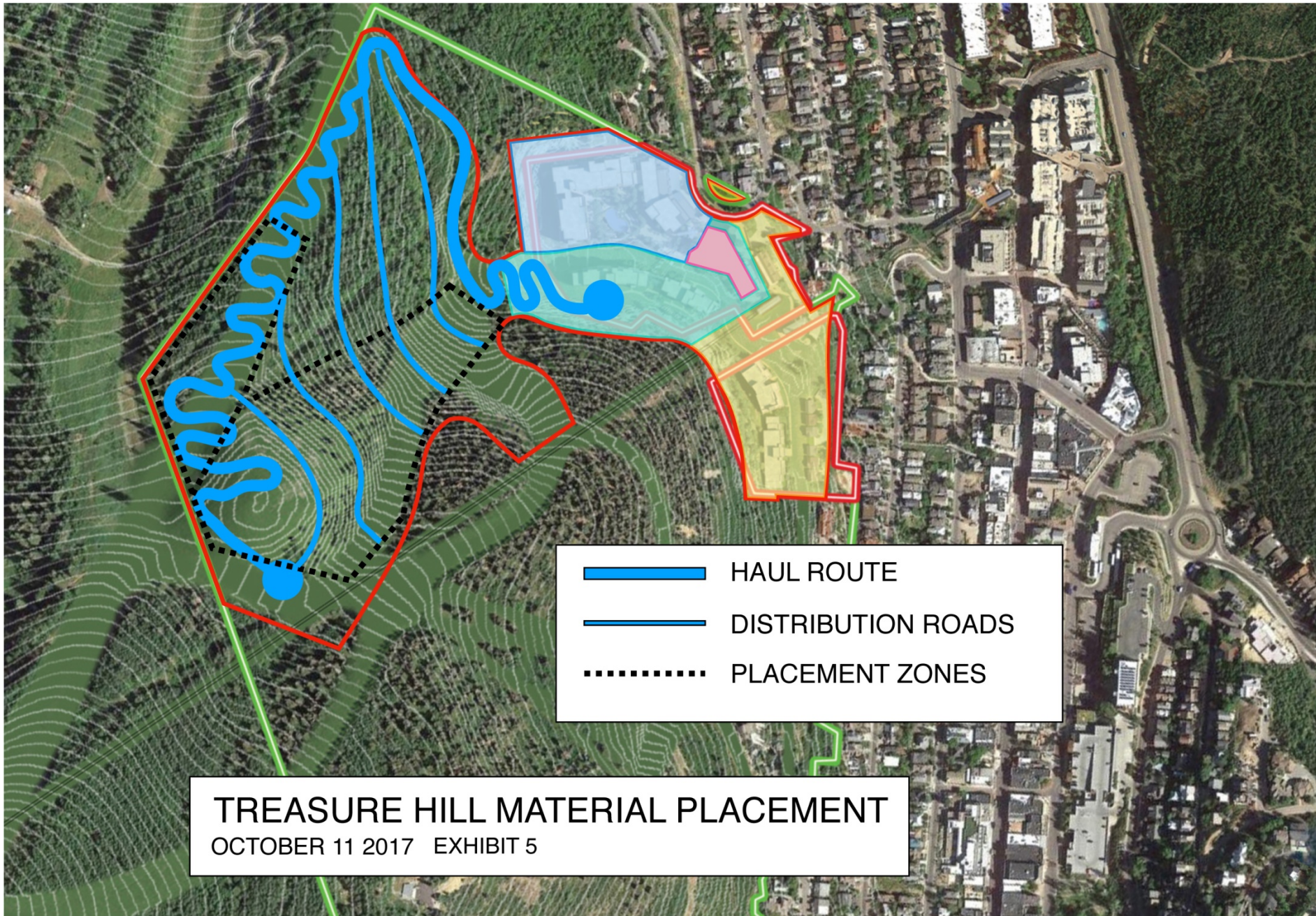
LOWELL AVENUE 10/22/17




n Nicole Deforge, an attorney
er who represents the opposi-
e tion group Treasure Hill Impact
g Neighborhood Coalition, said
g the project would "obliterate"
e much of the vegetation. She also
s claimed the project is larger than
e what was contemplated in the
g 1980s approval.

- Niels Vernegaard, a Treasure
critic who lives on Lowell Av-
k enue, said the roads in the vicin-
- ity of Treasure cannot support
e the construction traffic, infer-
g ring the project would crush the
e neighborhood.

e "It's going to be a living hell,"
Vernegaard said.

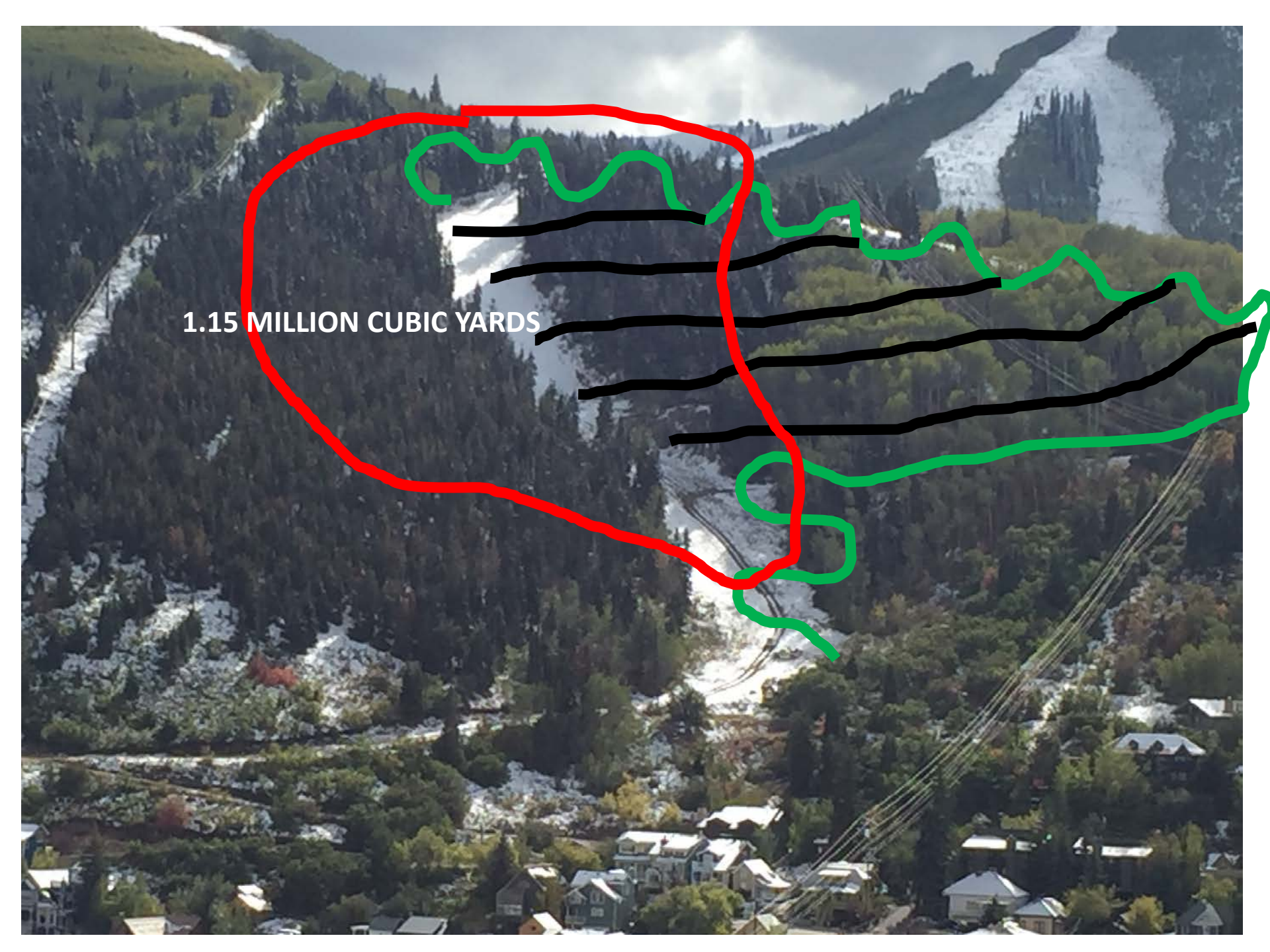
e The Planning Commissioners
after



	HAUL ROUTE
	DISTRIBUTION ROADS
	PLACEMENT ZONES

TREASURE HILL MATERIAL PLACEMENT
OCTOBER 11 2017 EXHIBIT 5





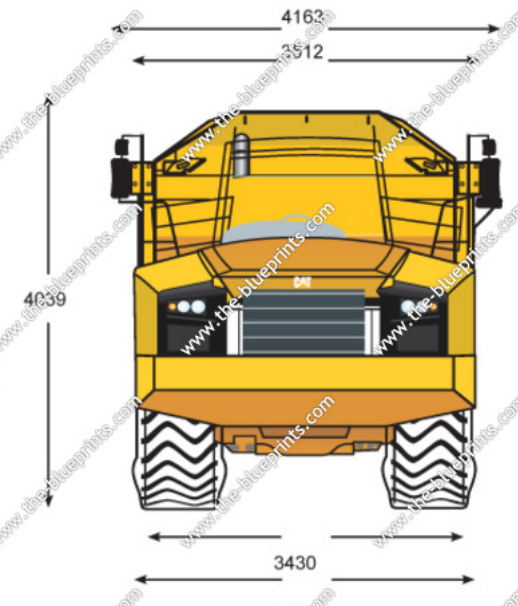
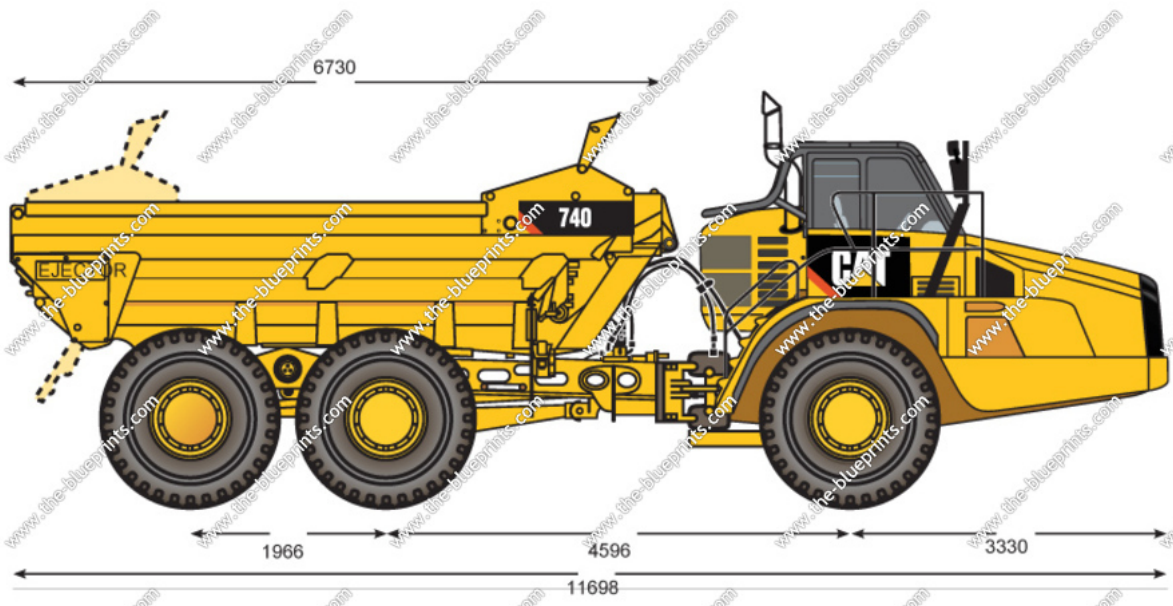
1.15 MILLION CUBIC YARDS



AT 1500 CY PER DAY, 50 TRUCK LOADS

Caterpillar 740EJ Articulated Dump Truck

Available as     

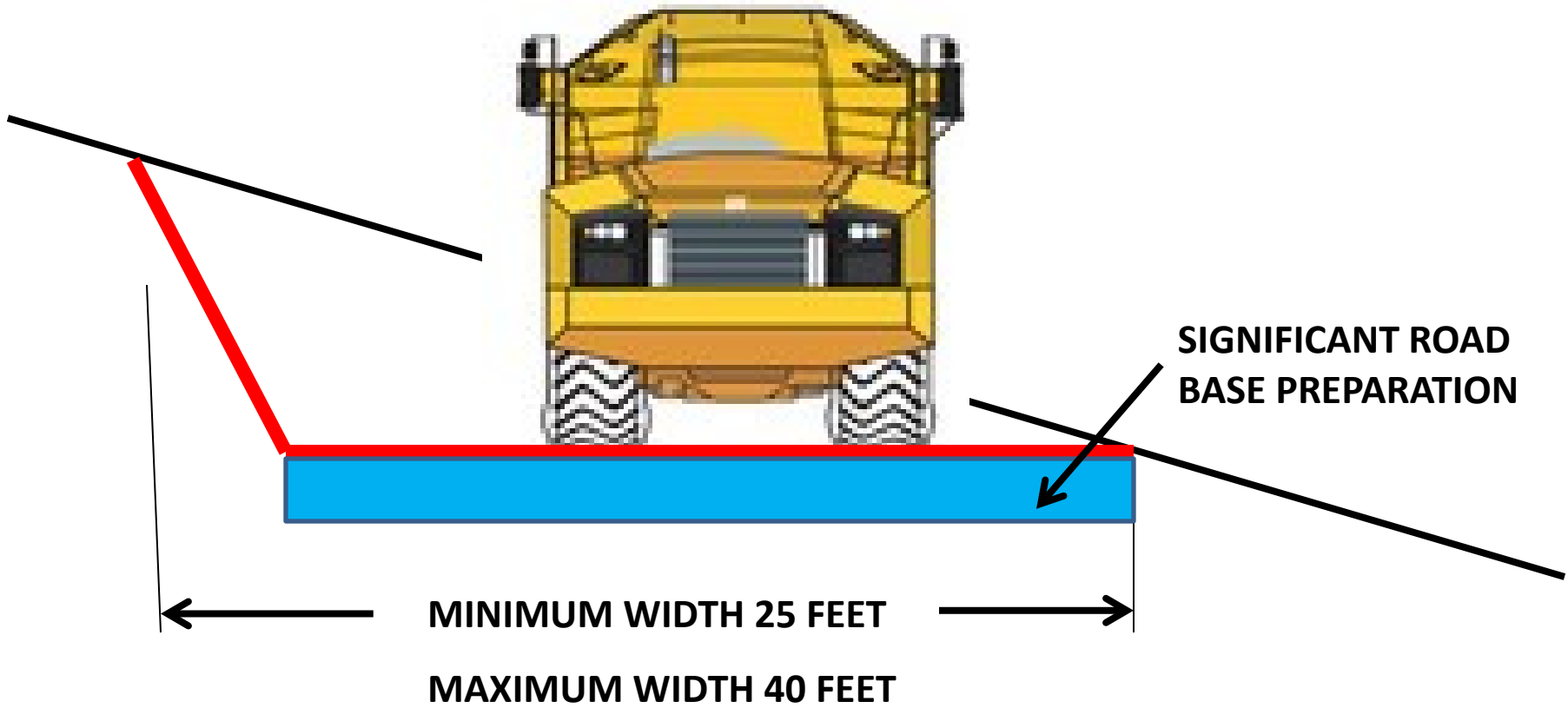



TRUCK WIDTH 11.5 FEET



© 2000 - 2013, Onno van Braam, www.the-blueprints.com
The largest free 3-view, template and blueprint collection on the internet







1.15 MILLION CUBIC YARDS

- **AT 1500 CY PER DAY, TOTAL TIME 767 DAYS**
- **8 MONTHS PER YEAR, 5 DAYS PER WEEK = 4.8 YEARS**
- **ADDITIONAL TIME FOR SITE PREPARATION**

n Nicole Deforge, an attorney
er who represents the opposi-
e tion group Treasure Hill Impact
g Neighborhood Coalition, said
g the project would “obliterate”
e much of the vegetation. She also
s claimed the project is larger than
e what was contemplated in the
g 1980s approval.

Niels Vernegaard, a Treasure
critic who lives on Lowell Av-
enue, said the roads in the vicin-
ity of Treasure cannot support
the construction traffic, infer-
ring the project would crush the
neighborhood.

“It’s going to be a living hell,”
Vernegaard said.

The Planning Commissioners

Thank You