



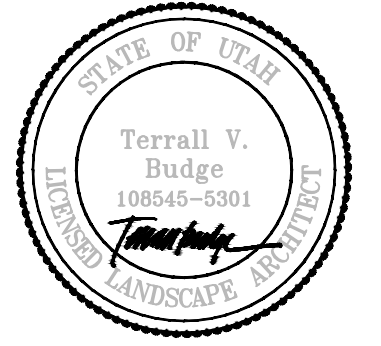
**SITE DETAIL KEY NOTES:** DETAIL/SHEET

- 0.0 EXISTING CONDITIONS/ WORK BY OTHERS**
  - 0.1 Existing Curb-Gutter
  - 0.2 Existing Asphalt Paving
  - 0.3 Existing Concrete Paving
- 1.0 PAVEMENTS, RAMPS, CURBS**
  - 1.1 Concrete Paving
  - 1.2 Asphalt Paving
  - 1.3 Paver
  - 1.4 Ramp
- 2.0 JOINTING**
  - 2.1 N/A
- 3.0 STAIRS**
  - 3.1 Stair
- 4.0 SITE WALLS/ EMBANKMENTS**
  - 4.1 Concrete Retaining Wall
  - 4.2 Concrete Retaining Wall with Corten
- 5.0 SITE FURNITURE**
  - 5.1 N/A
- 6.0 RAILINGS, BARRIERS, FENCING**
  - 6.1 Railing
- 7.0 SITE LIGHTING**
  - 7.1 N/A See Electrical
- 8.0 DRAINAGE**
  - 8.1 N/A See Civil
- 9.0 PLANTING AND LANDSCAPE**
  - 9.1 Tree
  - 9.2 Shrub Bed
  - 9.3 Turf
- 10.0 MISCELLANEOUS ELEMENTS**
  - 10.1 N/A

PROJECT NAME:  
**King's Crown**  
Park City, Utah

loci

801 906 0399  
www.loci-slc.com  
569 East 2nd Avenue  
Building B  
SLC, UT 84103



Principal T. Budge  
Project Manager M. Budge  
Drawn By G. Hardy

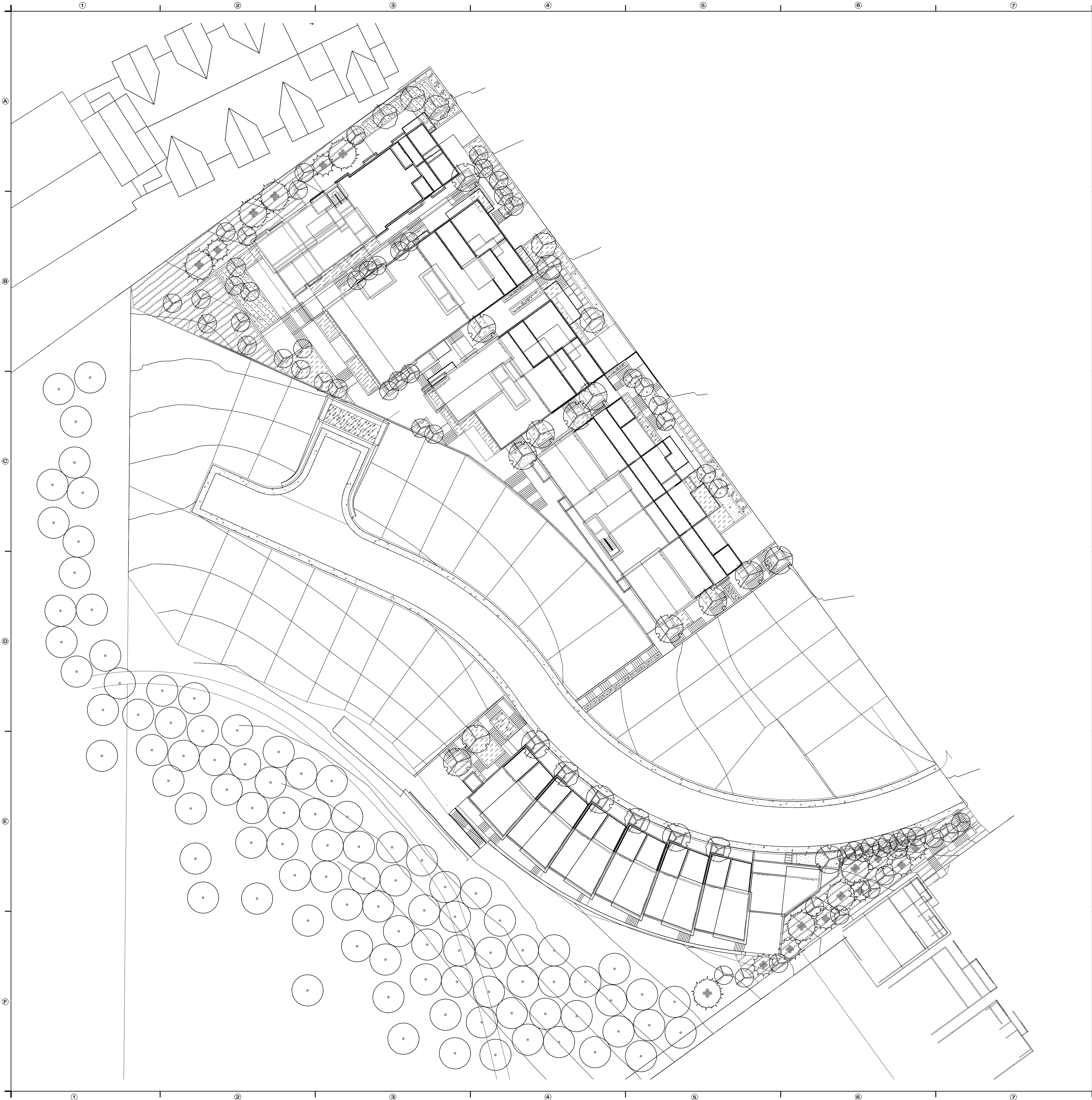
\_\_\_\_\_  
\_\_\_\_\_  
\_\_\_\_\_  
\_\_\_\_\_  
\_\_\_\_\_  
\_\_\_\_\_  
\_\_\_\_\_  
\_\_\_\_\_  
\_\_\_\_\_  
\_\_\_\_\_  
Job No. 0024  
Creation Date \_\_\_\_\_  
Edit Date Mar 29, 2017

DESIGN  
DEVELOPMENT

- L2 -  
MATERIALS

**L1-1**

Mar 29, 2017 - 4:50pm  
\\C:\SERVER\CompanyFiles\Dropbox\_Loci\Dropbox\_Loci\Projects (loci)\0024-King's Crown\CD-CAD\02\_Sheets\0024 - L2 - Materials.dwg



**SITE DETAIL KEY NOTES:** DETAIL/SHEET

- 0.0 EXISTING CONDITIONS/ WORK BY OTHERS**
  - 0.1 Existing Curb-Gutter
  - 0.2 Existing Asphalt Paving
  - 0.3 Existing Concrete Paving
- 1.0 PAVEMENTS, RAMPS, CURBS**
  - 1.1 Concrete Paving
  - 1.2 Asphalt Paving
  - 1.3 Paver
  - 1.4 Ramp
- 2.0 JOINTING**
  - 2.1 N/A
- 3.0 STAIRS**
  - 3.1 Stair
- 4.0 SITE WALLS/ EMBANKMENTS**
  - 4.1 Concrete Retaining Wall
  - 4.2 Concrete Retaining Wall with Corten
- 5.0 SITE FURNITURE**
  - 5.1 N/A
- 6.0 RAILINGS, BARRIERS, FENCING**
  - 6.1 Railing
- 7.0 SITE LIGHTING**
  - 7.1 N/A See Electrical
- 8.0 DRAINAGE**
  - 8.1 N/A See Civil
- 9.0 PLANTING AND LANDSCAPE**
  - 9.1 Tree
  - 9.2 Shrub Bed
  - 9.3 Turf
- 10.0 MISCELLANEOUS ELEMENTS**
  - 10.1 N/A

**PLANT SCHEDULE**

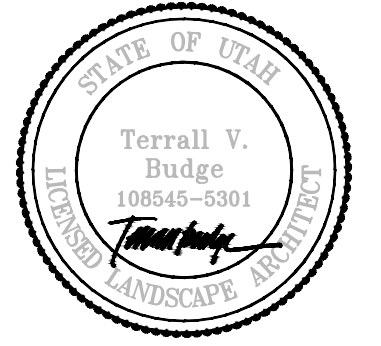
DECIDUOUS TREES	BOTANICAL NAME / COMMON NAME	CON	CAL	QTY
	Acer glabrum / Rocky Mountain Maple	B & B	2"	9
	Amelanchier x grandiflora 'Autumn Brilliance' / 'Autumn Brilliance' Serviceberry	B & B	2"	16
	Existing Tree***	Existing		94
	Populus tremuloides / Quaking Aspen	B & B	2"	59
EVERGREEN TREES	BOTANICAL NAME / COMMON NAME	CON	CAL	QTY
	Picea pungens 'Glaucus' / Colorado Blue Spruce	B & B	2"	8
	Pinus flexilis 'Vanderwolf's Pyramid' / Vanderwolf's Pyramid Pine	B & B	2"	9
SHRUB AREAS	BOTANICAL NAME / COMMON NAME	CONT	SPACING	QTY
	Arcostaphylos uva-ursi / Kinkikinsk	1 gal	24" o.c.	509
	Ericameria nauseosa / Rubber Rabbitbrush	5 gal	48" o.c.	110
	Naturalized Areas / Native Seed Mix	Hydroseed		10,479 sf
	Ribes alpinum 'Green Mound' / Green Mound Alpine Currant	5 gal	36" o.c.	82
	Ribes aureum / Golden Currant	5 gal	48" o.c.	100
	Rosa woodsii / Mountain Rose	5 gal	36" o.c.	78
	Schizanthus scoparium / Little Bluestem Grass	1 gal	36" o.c.	25
	Symphoricarpos oreophilus / Mountain Snowberry	5 gal	48" o.c.	214

\*\*\* Existing trees above development to be maintained as a part of the rest of the grounds, particularly around the ski access route.

PROJECT NAME:  
**King's Crown  
Park City, Utah**

loci

801 906 0399  
www.loci-slc.com  
569 East 2nd Avenue  
Building B  
SLC, UT 84103



Principal **T. Budge**  
Project Manager **M. Budge**  
Drawn By **G. Hardy**

Job No. **0024**  
Creation Date  
Edit Date **Mar 29, 2017**

DESIGN  
DEVELOPMENT

- L5 -  
PLANTING  
**L5-1**