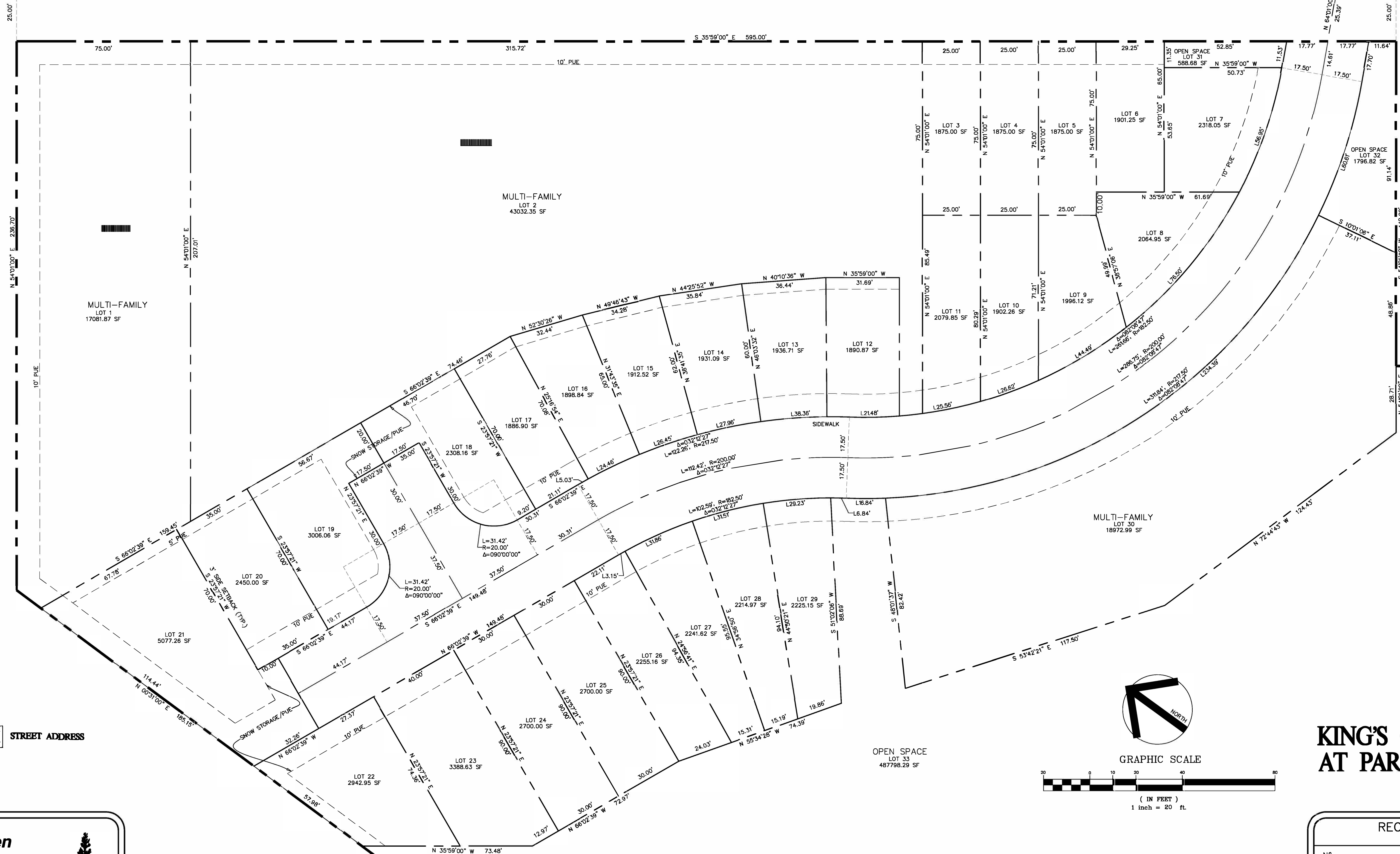


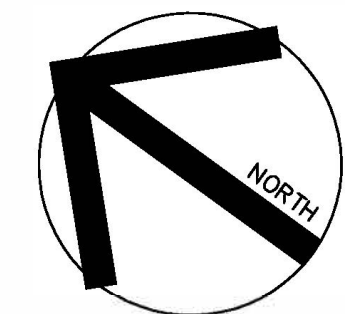
LOWELL AVE

N 35°59'00" W 580.00'

12TH ST.
(30' ROW)



XXX STREET ADDRESS



GRAPHIC SCALE



(IN FEET)
1 inch = 20 ft.

KING'S CROWN
AT PARK CITY

SHEET 2 OF 2
PLOTED: JUNE 12, 2017
DRAWING: LOWELL-PLA17-P2.DWG
© 2017 Evergreen Engineering, Inc.

RECORDED

Nº. _____
STATE OF _____
COUNTY OF _____
RECORDED AND FILED AT THE REQUEST OF: _____

COUNTY RECORDER

SEE SHEET 1 FOR CONTINUATION OF LOT 33 AND LOT 34

SEE SHEET 1 FOR CONTINUATION OF LOT 33 AND LOT 34

Evergreen Engineering, Inc.

Civil Engineering • Land Surveying • Land Planning
1670 Bonanza Drive • Suite 104
P.O. Box 2861 • Park City • Utah • 84060
Phone: 435.649.4667 • Fax: 435.649.9219
E-mail: office@evergreen-eng.com