



SITE DETAIL KEY NOTES: DETAIL/SHEET

- 0.0 EXISTING CONDITIONS/ WORK BY OTHERS**
 - 0.1 Existing Curb-Gutter
 - 0.2 Existing Asphalt Paving
 - 0.3 Existing Concrete Paving
- 1.0 PAVEMENTS, RAMPS, CURBS**
 - 1.1 Concrete Paving
 - 1.2 Asphalt Paving
 - 1.3 Paver
 - 1.4 Ramp
- 2.0 JOINTING**
 - 2.1 N/A
- 3.0 STAIRS**
 - 3.1 Stair
- 4.0 SITE WALLS/ EMBANKMENTS**
 - 4.1 Concrete Retaining Wall
 - 4.2 Concrete Retaining Wall with Corten
- 5.0 SITE FURNITURE**
 - 5.1 N/A
- 6.0 RAILINGS, BARRIERS, FENCING**
 - 6.1 Railing
- 7.0 SITE LIGHTING**
 - 7.1 N/A See Electrical
- 8.0 DRAINAGE**
 - 8.1 N/A See Civil
- 9.0 PLANTING AND LANDSCAPE**
 - 9.1 Tree
 - 9.2 Shrub Bed
 - 9.3 Turf
- 10.0 MISCELLANEOUS ELEMENTS**
 - 10.1 N/A

PROJECT NAME:
King's Crown
Park City, Utah

loci

801 906 0399
www.loci-slc.com
569 East 2nd Avenue
Building B
SLC, UT 84103

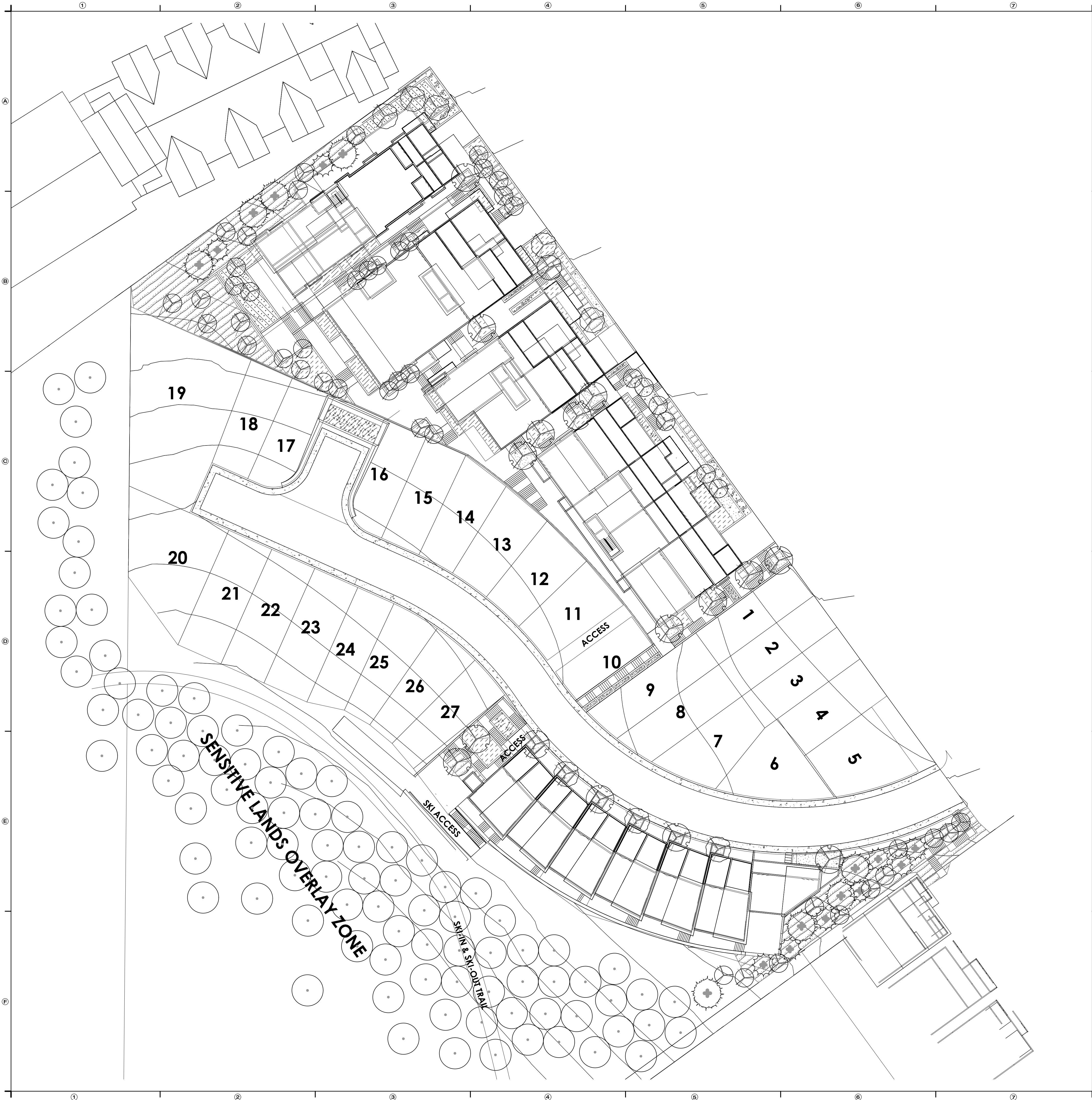
Principal T. Budge
Project Manager M. Budge
Drawn By G. Hardy

Job No. 0024
Creation Date _____
Edit Date Mar 27, 2017

DESIGN
DEVELOPMENT

- L2 -
MATERIALS

L1-1



SITE DETAIL KEY NOTES: DETAIL/SHEET

- 0.0 EXISTING CONDITIONS/ WORK BY OTHERS**
 - 0.1 Existing Curb-Gutter
 - 0.2 Existing Asphalt Paving
 - 0.3 Existing Concrete Paving
- 1.0 PAVEMENTS, RAMPS, CURBS**
 - 1.1 Concrete Paving
 - 1.2 Asphalt Paving
 - 1.3 Paver
 - 1.4 Ramp
- 2.0 JOINTING**
 - 2.1 N/A
- 3.0 STAIRS**
 - 3.1 Stair
- 4.0 SITE WALLS/ EMBANKMENTS**
 - 4.1 Concrete Retaining Wall
 - 4.2 Concrete Retaining Wall with Corten
- 5.0 SITE FURNITURE**
 - 5.1 N/A
- 6.0 RAILINGS, BARRIERS, FENCING**
 - 6.1 Railing
- 7.0 SITE LIGHTING**
 - 7.1 N/A See Electrical
- 8.0 DRAINAGE**
 - 8.1 N/A See Civil
- 9.0 PLANTING AND LANDSCAPE**
 - 9.1 Tree
 - 9.2 Shrub Bed
 - 9.3 Turf
- 10.0 MISCELLANEOUS ELEMENTS**
 - 10.1 N/A

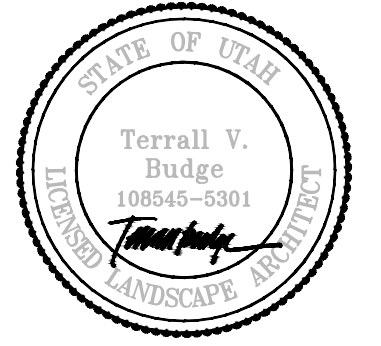
PLANT SCHEDULE

DECIDUOUS TREES	BOTANICAL NAME / COMMON NAME	CON	QTY	
	Acer glabrum / Rocky Mountain Maple	15 gal	9	
	Amelanchier x grandiflora 'Autumn Brilliance' / 'Autumn Brilliance' Serviceberry	15 gal	16	
	Existing Tree	15 gal	94	
	Populus tremuloides / Quaking Aspen	15 gal	47	
EVERGREEN TREES	BOTANICAL NAME / COMMON NAME	CON	QTY	
	Picea pungens 'Glauca' / Colorado Blue Spruce	15 gal	8	
	Pinus flexilis 'Vanderwolf's Pyramid' / Vanderwolf's Pyramid Pine	15 gal	9	
SHRUB AREAS	BOTANICAL NAME / COMMON NAME	CONT	SPACING	QTY
	Arctostaphylos uva-ursi / Kinnikinnick	1 gal	24" o.c.	508
	Ericameria nauseosa / Rubber Rabbitbrush	5 gal	48" o.c.	110
	Naturalized Areas / Native Seed Mix	1 gal		10,078
	Ribes alpinum 'Green Mound' / Green Mound Alpine Currant	5 gal	36" o.c.	82
	Ribes aureum / Golden Currant	5 gal	48" o.c.	76
	Rosa woodsii / Mountain Rose	5 gal	36" o.c.	76
	Schizachyrium scoparium / Little Bluestem Grass	1 gal	36" o.c.	25
	Symphoricarpos oreophyllus / Mountain Snowberry	5 gal	48" o.c.	232

PROJECT NAME:
King's Crown
Park City, Utah

loci

801 906 0399
www.loci-slc.com
569 East 2nd Avenue
Building B
SLC, UT 84103



Principal **T. Budge**
Project Manager **M. Budge**
Drawn By **G. Hardy**

Job No. **0024**
Creation Date
Edit Date **Mar 27, 2017**

DESIGN DEVELOPMENT

- L5 -
PLANTING

L5-1