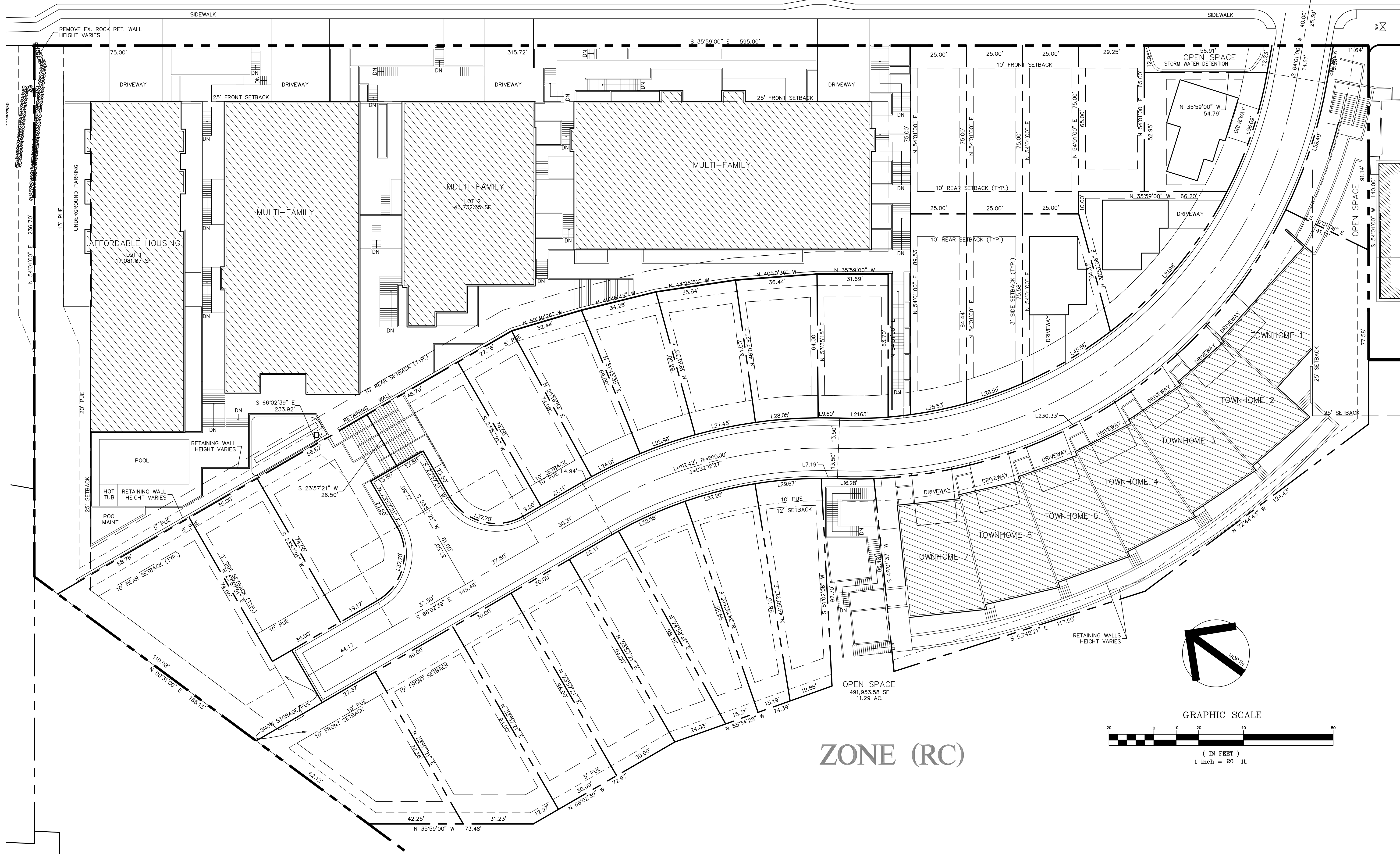
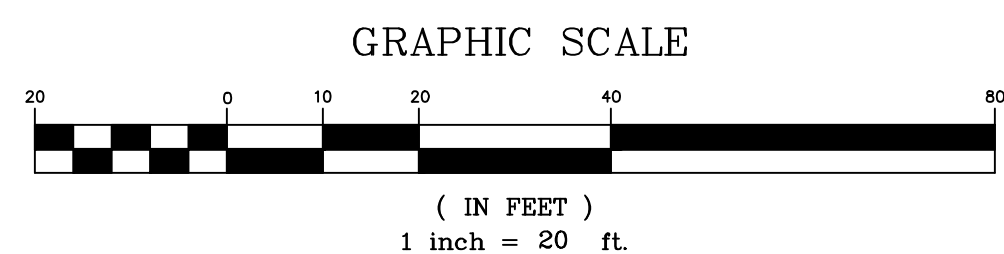
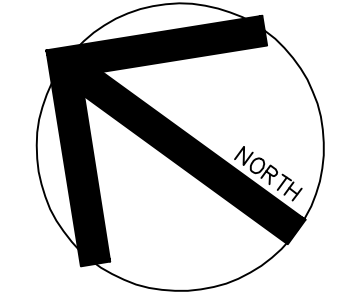


SWEETWATER PARK CITY
CONDOSHARE PROJECT III
(LIFT LODGE)

LOWELL AVE



ZONE (RC)



Evergreen Engineering, Inc.
 Civil Engineering • Land Surveying • Land Planning
 1670 Benzonia Drive • Suite 104 • 84660
 P.O. Box 288 • Park City • Utah • 84302
 E-mail: office@evergreen-eng.com

REVISIONS	COMMENTS
DATE	BY

DESIGNED BY:
ADM

DRAWN BY:
ADM

CHECKED BY:
ADM

FOR: **WOW ATELIER**

PRELIMINARY SITE PLAN
KING'S CROWN

JOB NO. **1635**

DATE: **LOWELL-SITE-R**

SHEET C2