

DATE: JUNE 14, 2017
 PROJECT NO.: 04-02-17
 FILE: PROJECTS\MOHLER

REVISIONS	DATE
△	
△	
△	
△	
△	

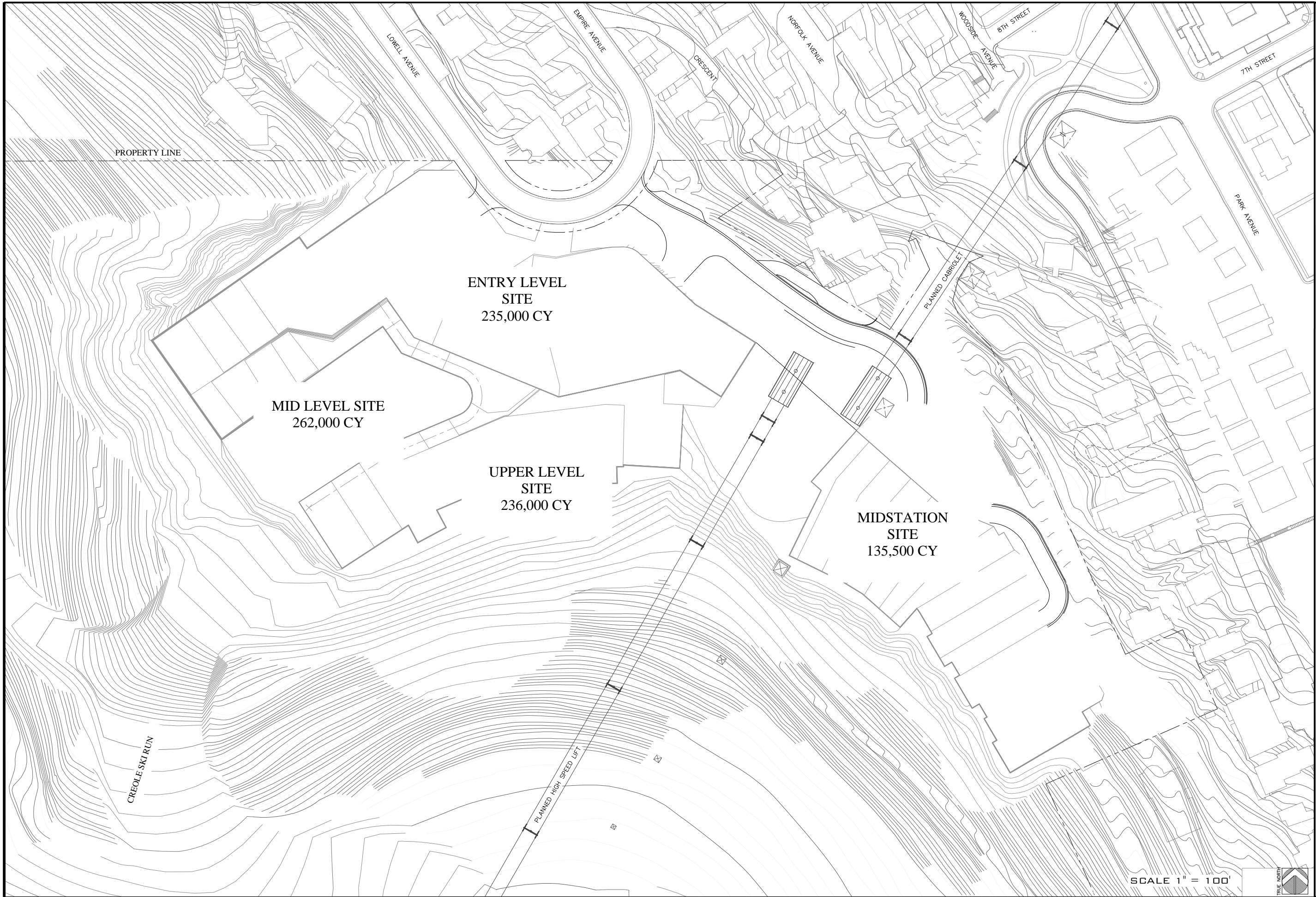


ALTA ENGINEERING INC.
 CIVIL ENGINEERING • LAND PLANNING
 SURVEYING • PROJECT MANAGEMENT
 PO BOX 5504 PARK CITY, UTAH 84002 435-645-9191

FOR: MPE INC.
**TREASURE
 REFINEMENT 17.1
 EXCAVATION SIE & VOLUMES**

SHEET NO:
E1.0

SCALE 1" = 100'



PROPERTY LINE

ENTRY LEVEL
SITE
235,000 CY

MID LEVEL SITE
262,000 CY

UPPER LEVEL
SITE
236,000 CY

MIDSTATION
SITE
135,500 CY

CREOLE SKI RUN

PLANNED HIGH SPEED LIFT

PLANNED CARRIOLET

SCALE 1" = 100'



DATE:
JUNE 26, 2017

PROJECT NO.:
04-02-17

FILE:
TREASURE

REVISIONS	DATE



ALTA
ENGINEERING
INC.

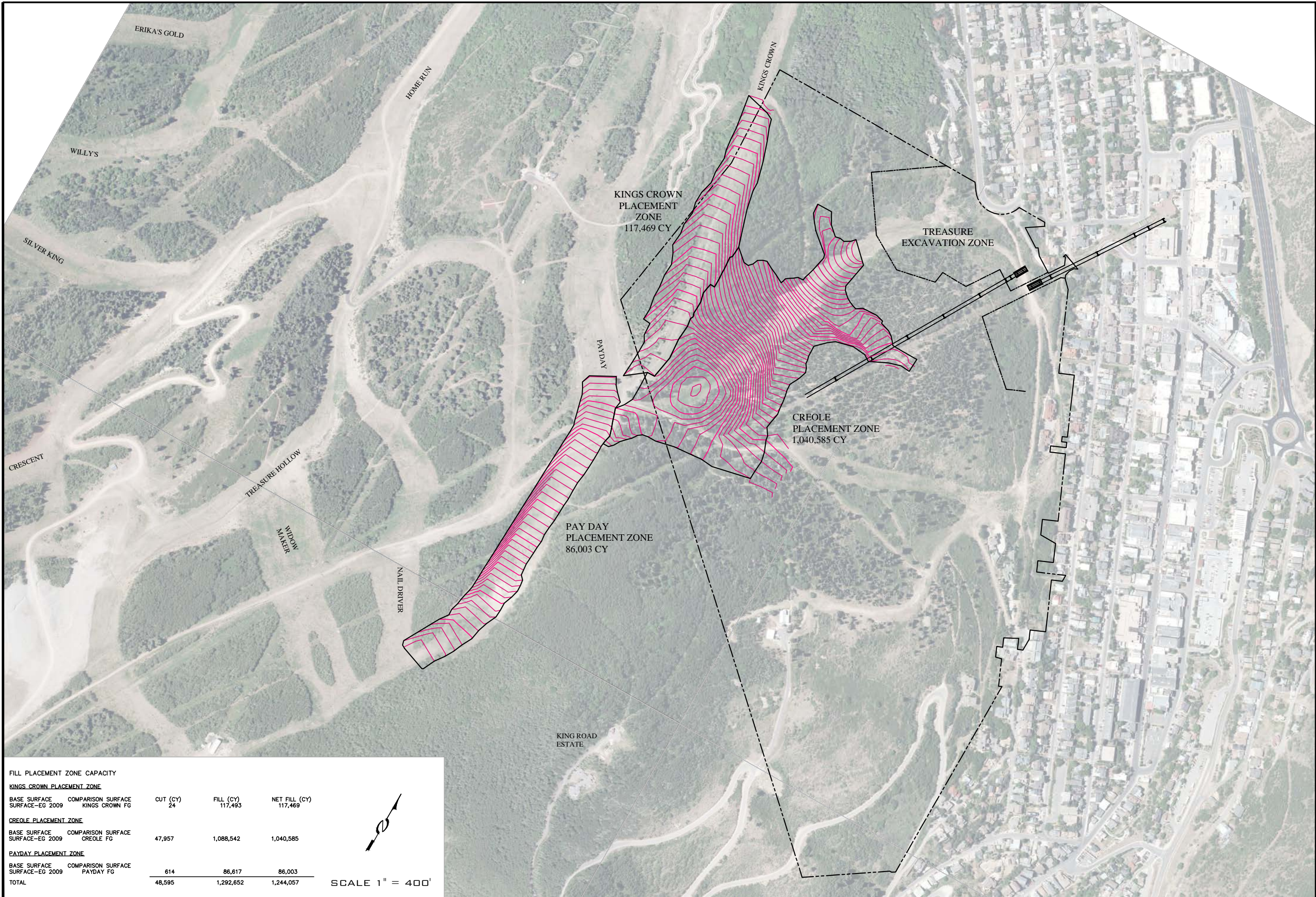
CIVIL ENGINEERING • LAND PLANNING
SURVEYING • PROJECT MANAGEMENT

PO BOX 8584 PARK CITY, UTAH 84092 435-646-9191

FOR: MPE INC.

TREASURE
REFINEMENT 17.2
EXCAVATION VOLUMES

SHEET NO:
E1.1



DATE: JUNE 14, 2017
 PROJECT NO.: 04-16-02
 FILE: TREASURE

REVISIONS	DATE
▲	
▲	
▲	
▲	
▲	



ALTA ENGINEERING INC.
 CIVIL ENGINEERING • LAND PLANNING
 SURVEYING • PROJECT MANAGEMENT
 PO BOX 8884 SALT LAKE CITY, UTAH 84144-8884 (801) 487-1911

FOR: MPE INC.
TREASURE
REFINEMENT 17.1
MATERIAL PLACEMENT ZONES

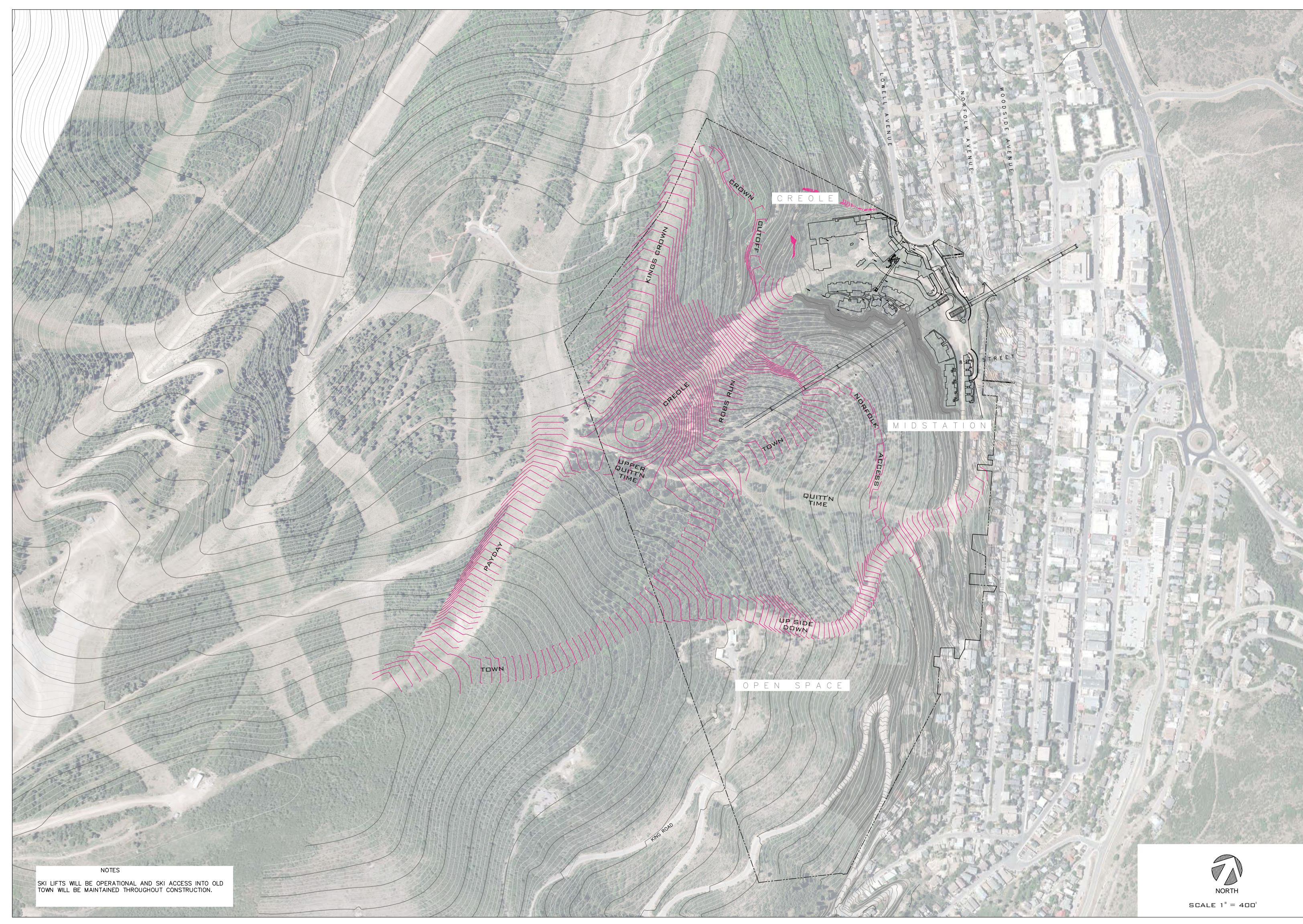
SHEET NO:
E2.0

FILL PLACEMENT ZONE CAPACITY

KINGS CROWN PLACEMENT ZONE		CUT (CY)	FILL (CY)	NET FILL (CY)
BASE SURFACE	COMPARISON SURFACE	24	117,493	117,469
SURFACE-EG 2009	KINGS CROWN FG			
CREOLE PLACEMENT ZONE		47,957	1,088,542	1,040,585
BASE SURFACE	COMPARISON SURFACE			
SURFACE-EG 2009	CREOLE FG			
PAYDAY PLACEMENT ZONE		614	86,617	86,003
BASE SURFACE	COMPARISON SURFACE			
SURFACE-EG 2009	PAYDAY FG			
TOTAL		48,595	1,292,652	1,244,057

SCALE 1" = 400'

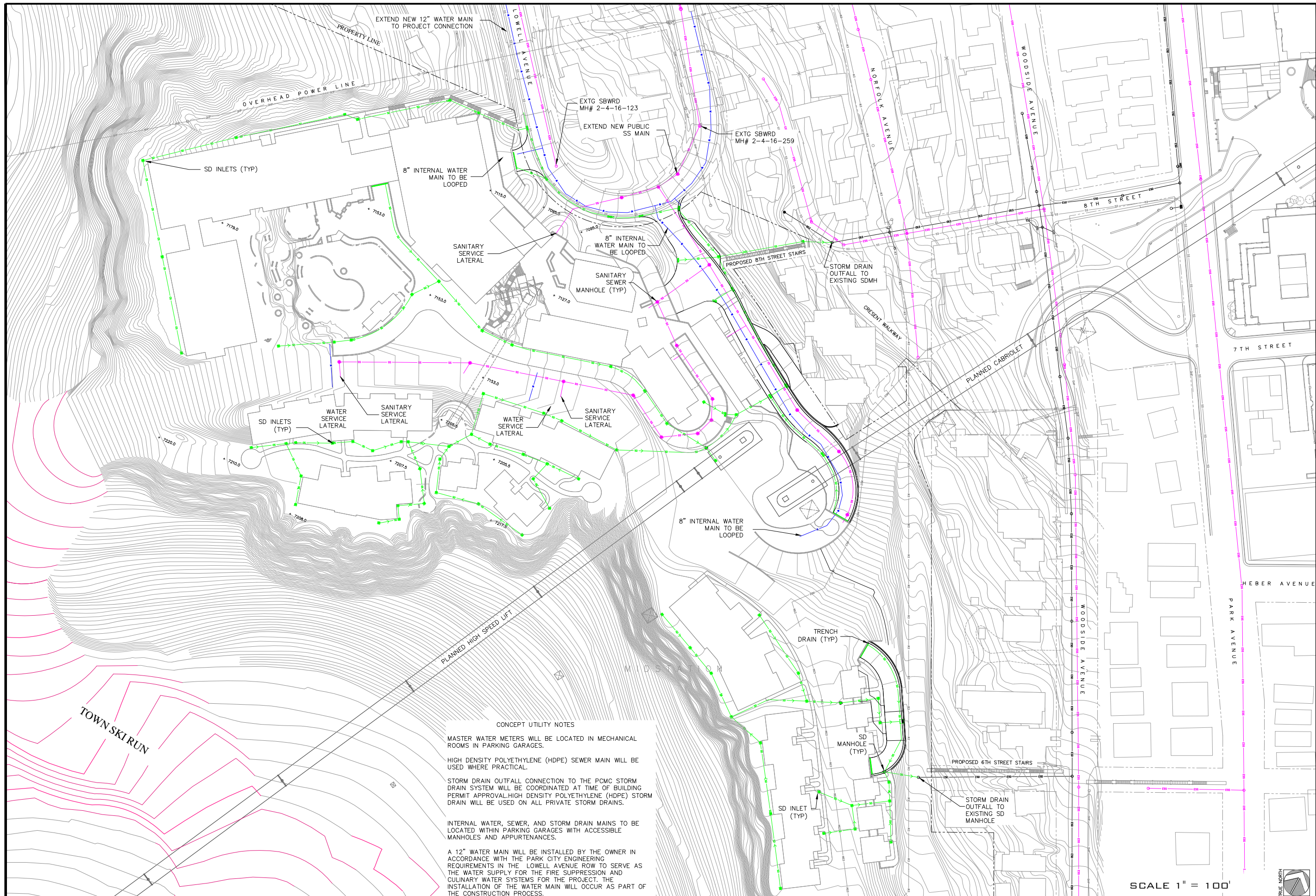
VICINITY MAP & SKI RUN GRADING
TREASURE HILL - PARK CITY, UTAH



NOTES
SKI LIFTS WILL BE OPERATIONAL AND SKI ACCESS INTO OLD TOWN WILL BE MAINTAINED THROUGHOUT CONSTRUCTION.



SCALE 1" = 400'



DATE: JUNE 26, 2017
 PROJECT NO.: 04-02-17
 FILE: PROJECTS/MOHLER

REVISIONS	DATE



FOR: MPE INC.

TREASURE
 REFINEMENT 17.1
 CONCEPT UTILITY PLAN

SHEET NO: E 4.0

CONCEPT UTILITY NOTES

MASTER WATER METERS WILL BE LOCATED IN MECHANICAL ROOMS IN PARKING GARAGES.

HIGH DENSITY POLYETHYLENE (HDPE) SEWER MAIN WILL BE USED WHERE PRACTICAL.

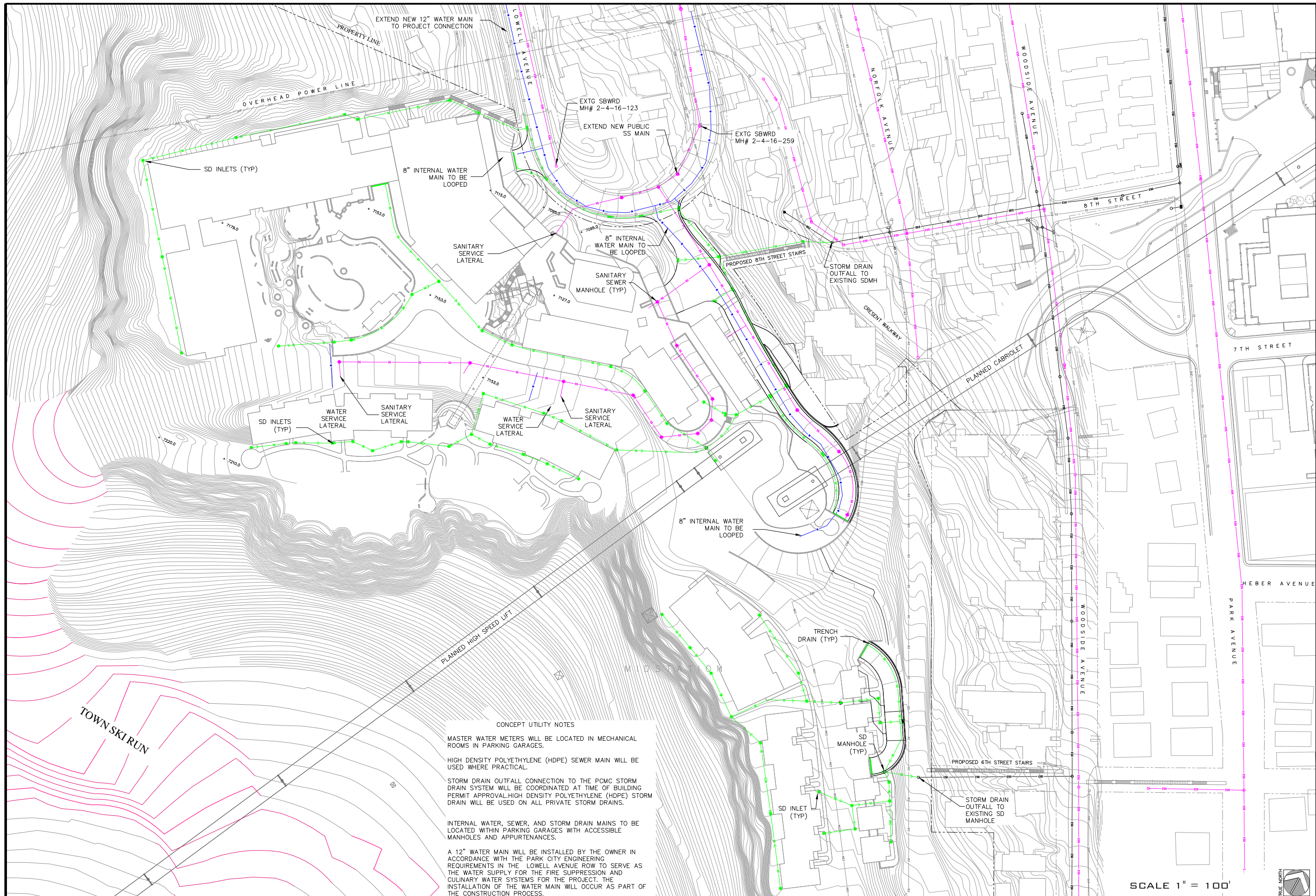
STORM DRAIN OUTFALL CONNECTION TO THE PCMC STORM DRAIN SYSTEM WILL BE COORDINATED AT TIME OF BUILDING PERMIT APPROVAL. HIGH DENSITY POLYETHYLENE (HDPE) STORM DRAIN WILL BE USED ON ALL PRIVATE STORM DRAINS.

INTERNAL WATER, SEWER, AND STORM DRAIN MAINS TO BE LOCATED WITHIN PARKING GARAGES WITH ACCESSIBLE MANHOLES AND APPURTENANCES.

A 12" WATER MAIN WILL BE INSTALLED BY THE OWNER IN ACCORDANCE WITH THE PARK CITY ENGINEERING REQUIREMENTS IN THE LOWELL AVENUE ROW TO SERVE AS THE WATER SUPPLY FOR THE FIRE SUPPRESSION AND CULINARY WATER SYSTEMS FOR THE PROJECT. THE INSTALLATION OF THE WATER MAIN WILL OCCUR AS PART OF THE CONSTRUCTION PROCESS.

SCALE 1" = 100'





DATE: JUNE 26, 2017
 PROJECT NO.: 04-02-17
 FILE: PROJECTS/MOHLER

REVISIONS	DATE

ALTA ENGINEERING INC.
 CIVIL ENGINEERING & LAND PLANNING
 SURVEYING & PROJECT MANAGEMENT
 PO BOX 2884 PARK CITY, UTAH 84302 435-645-9191

FOR: MPE INC.

TREASURE
 REFINEMENT 17.2
 CONCEPT UTILITY PLAN

CONCEPT UTILITY NOTES

MASTER WATER METERS WILL BE LOCATED IN MECHANICAL ROOMS IN PARKING GARAGES.

HIGH DENSITY POLYETHYLENE (HDPE) SEWER MAIN WILL BE USED WHERE PRACTICAL.

STORM DRAIN OUTFALL CONNECTION TO THE PCMC STORM DRAIN SYSTEM WILL BE COORDINATED AT TIME OF BUILDING PERMIT APPROVAL. HIGH DENSITY POLYETHYLENE (HDPE) STORM DRAIN WILL BE USED ON ALL PRIVATE STORM DRAINS.

INTERNAL WATER, SEWER, AND STORM DRAIN MAINS TO BE LOCATED WITHIN PARKING GARAGES WITH ACCESSIBLE MANHOLES AND APPURTENANCES.

A 12" WATER MAIN WILL BE INSTALLED BY THE OWNER IN ACCORDANCE WITH THE PARK CITY ENGINEERING REQUIREMENTS IN THE LOWELL AVENUE ROW TO SERVE AS THE WATER SUPPLY FOR THE FIRE SUPPRESSION AND CULINARY WATER SYSTEMS FOR THE PROJECT. THE INSTALLATION OF THE WATER MAIN WILL OCCUR AS PART OF THE CONSTRUCTION PROCESS.

SCALE 1" = 100'

SHEET NO:
E 4.1