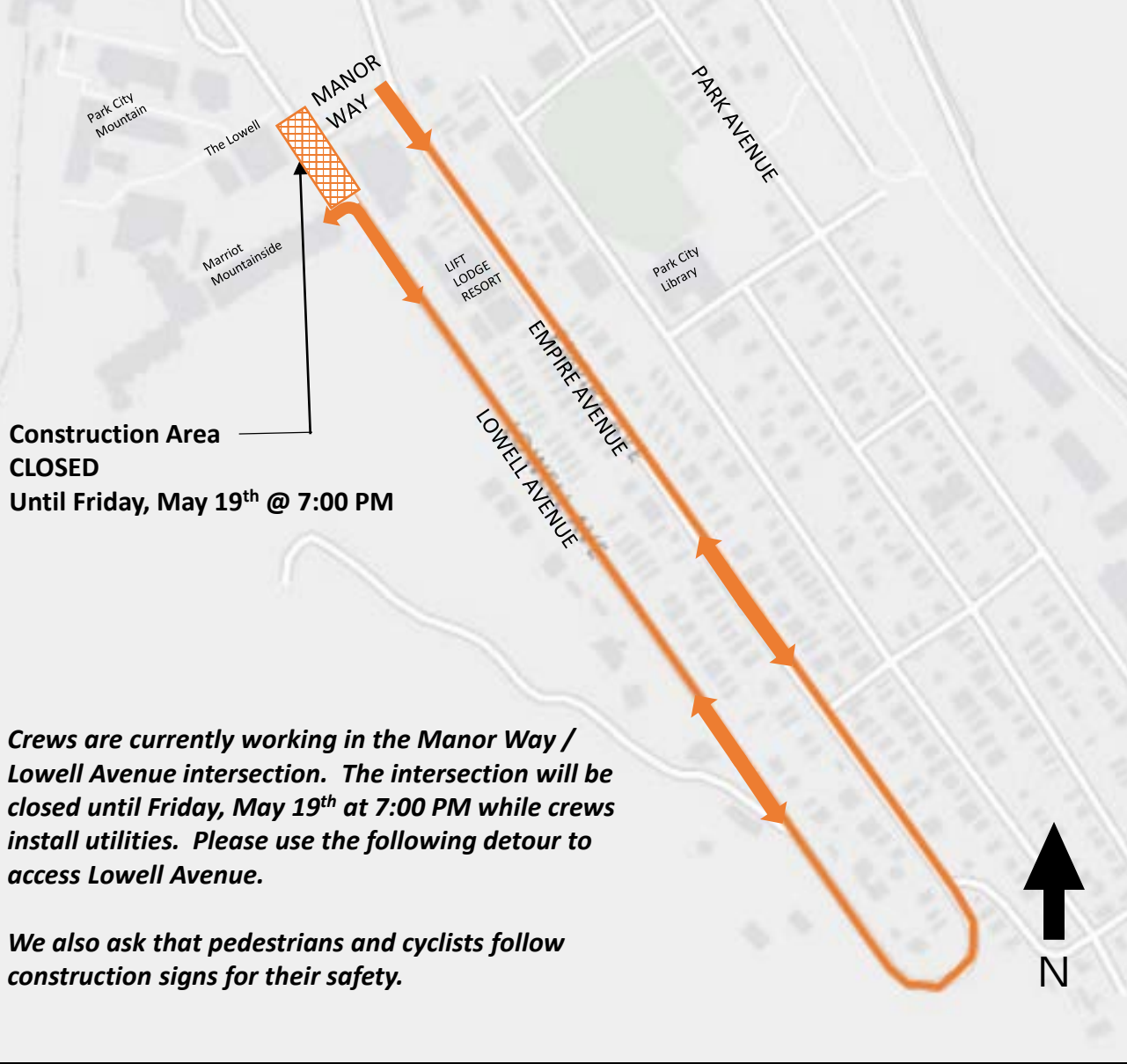
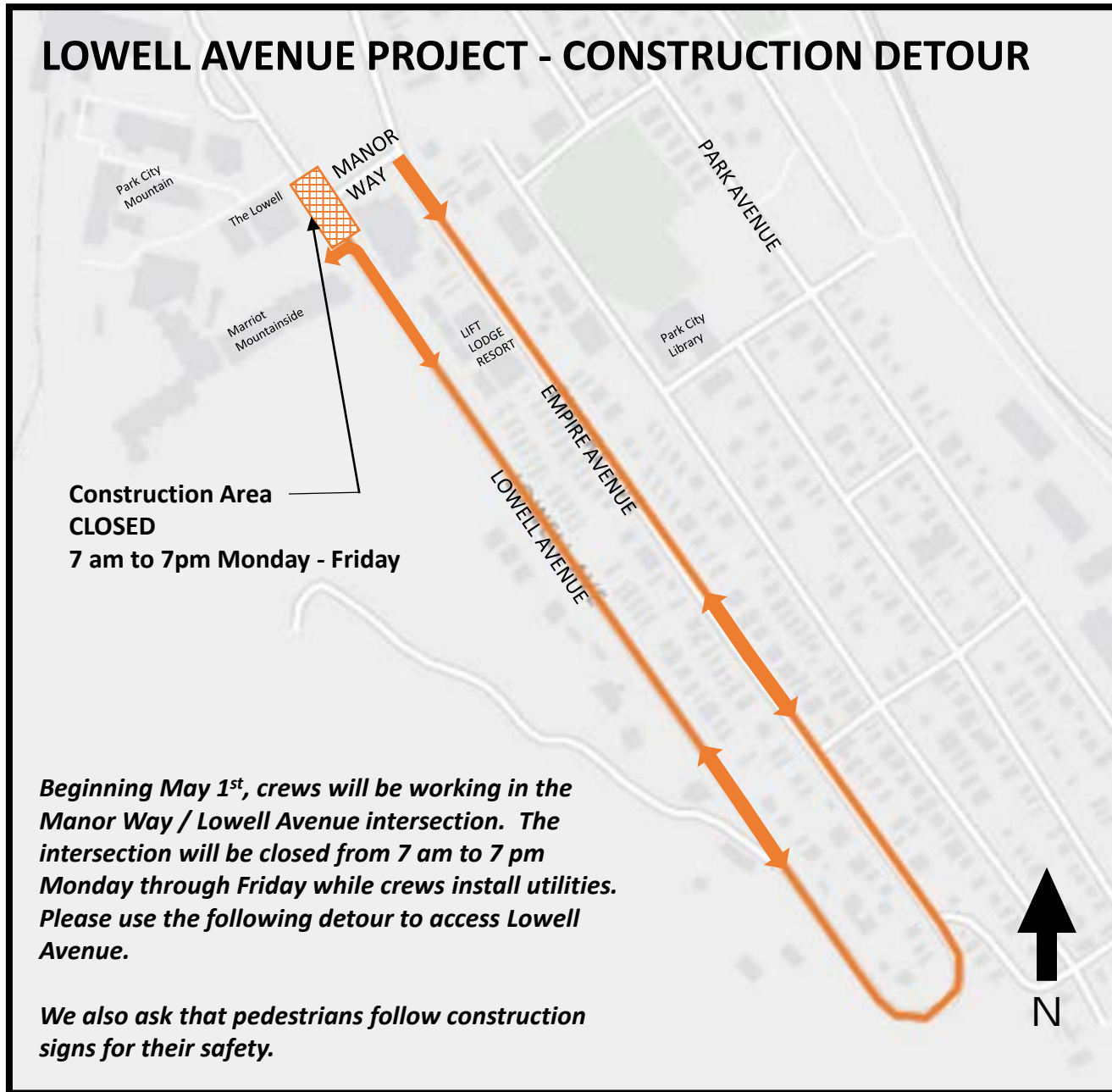


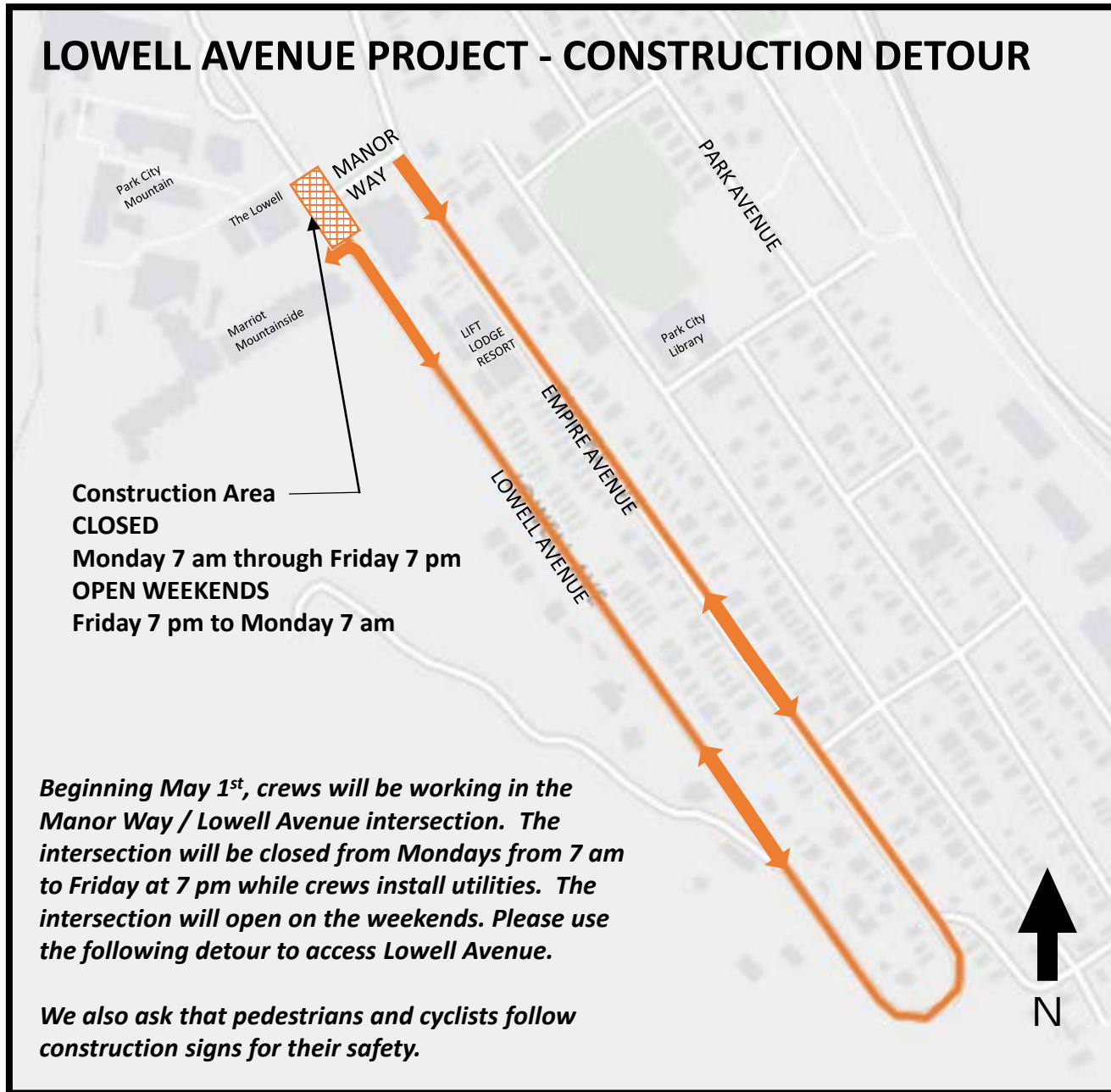
# LOWELL AVENUE PROJECT - CONSTRUCTION DETOUR



# LOWELL AVENUE PROJECT - CONSTRUCTION DETOUR



# LOWELL AVENUE PROJECT - CONSTRUCTION DETOUR

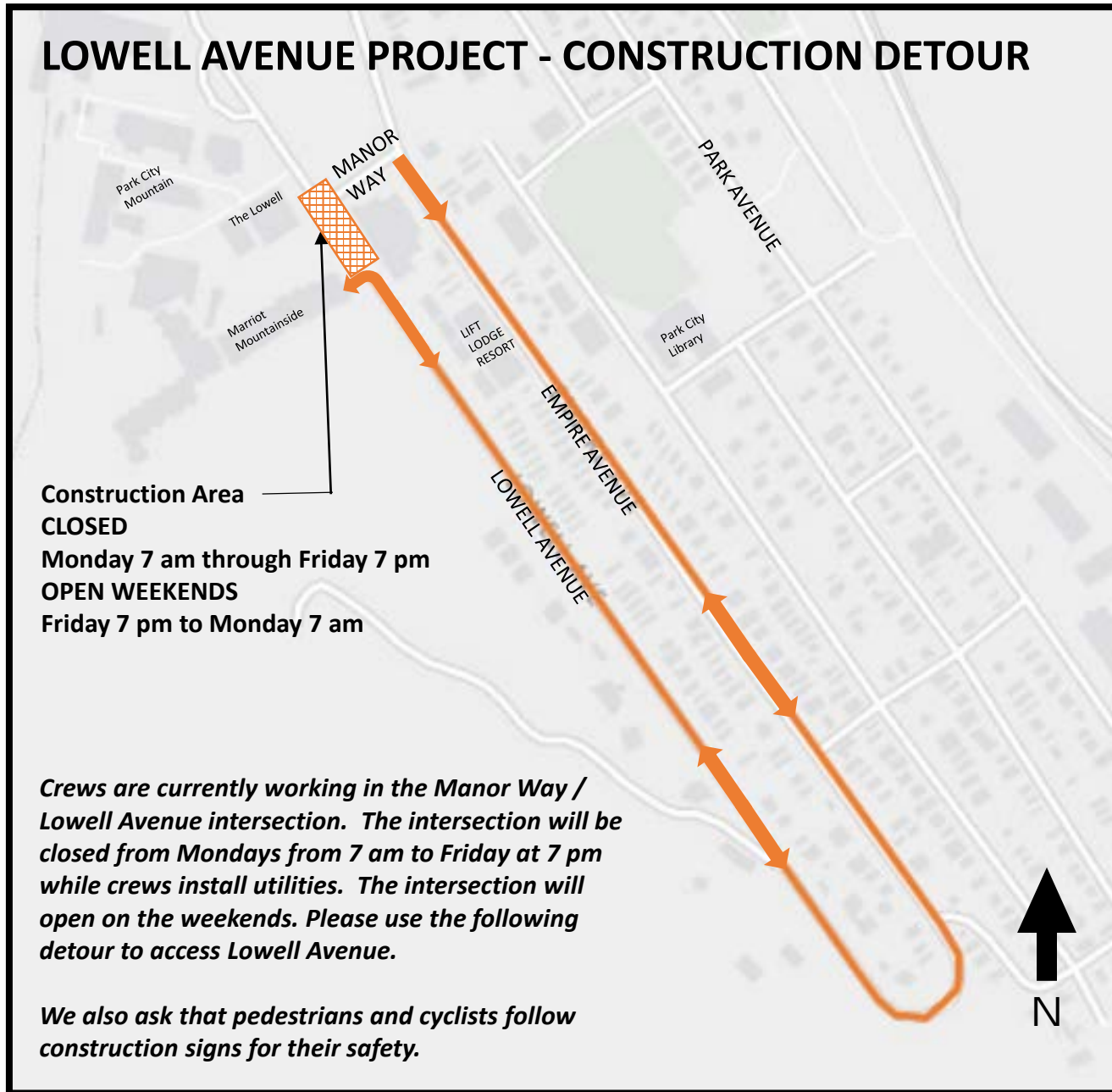


**Construction Area**  
**CLOSED**  
**Monday 7 am through Friday 7 pm**  
**OPEN WEEKENDS**  
**Friday 7 pm to Monday 7 am**

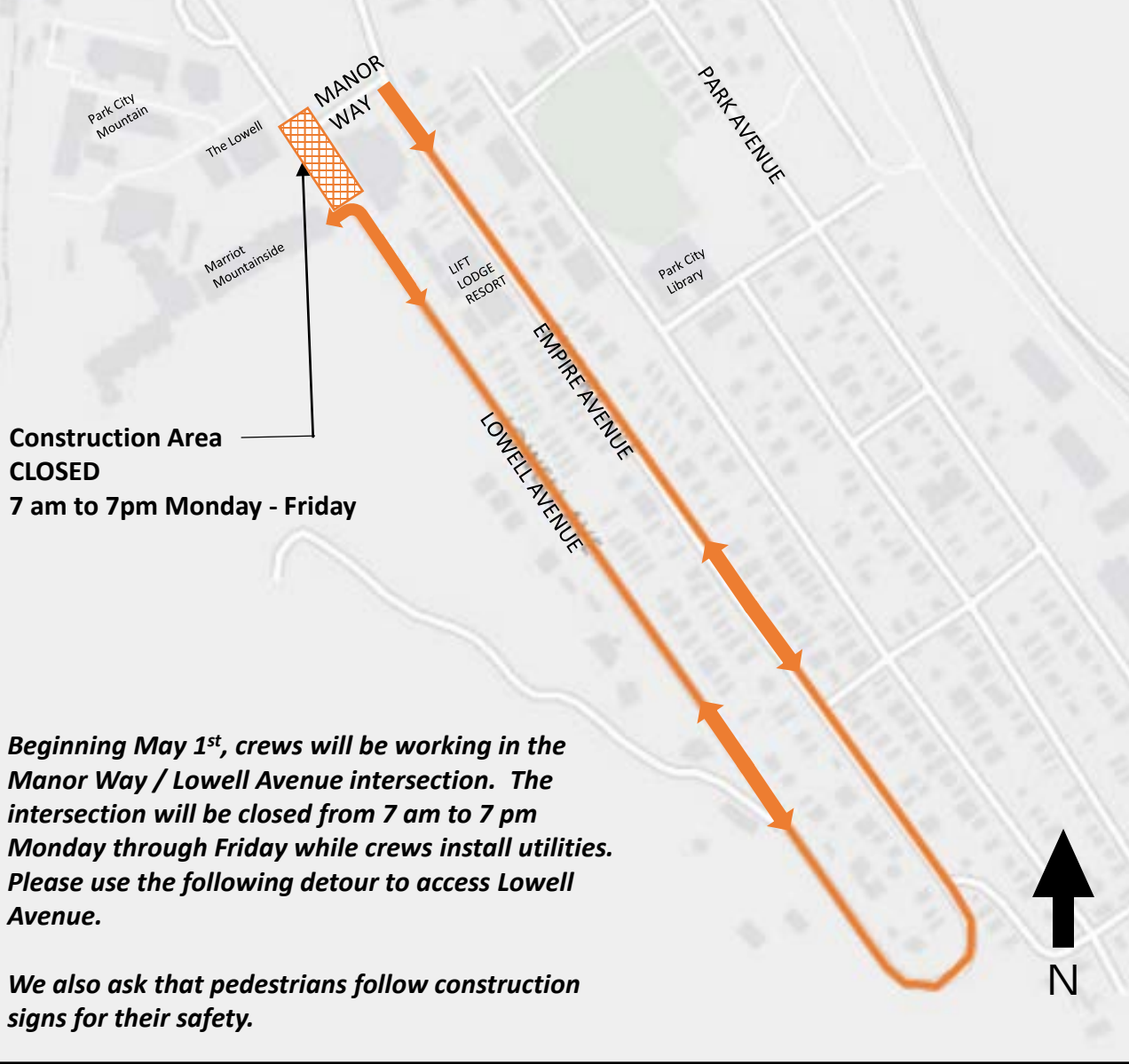
*Beginning May 1<sup>st</sup>, crews will be working in the Manor Way / Lowell Avenue intersection. The intersection will be closed from Mondays from 7 am to Friday at 7 pm while crews install utilities. The intersection will open on the weekends. Please use the following detour to access Lowell Avenue.*

*We also ask that pedestrians and cyclists follow construction signs for their safety.*

# LOWELL AVENUE PROJECT - CONSTRUCTION DETOUR



# LOWELL AVENUE PROJECT - CONSTRUCTION DETOUR



**Construction Area  
CLOSED  
7 am to 7pm Monday - Friday**

***Beginning May 1<sup>st</sup>, crews will be working in the Manor Way / Lowell Avenue intersection. The intersection will be closed from 7 am to 7 pm Monday through Friday while crews install utilities. Please use the following detour to access Lowell Avenue.***

***We also ask that pedestrians follow construction signs for their safety.***