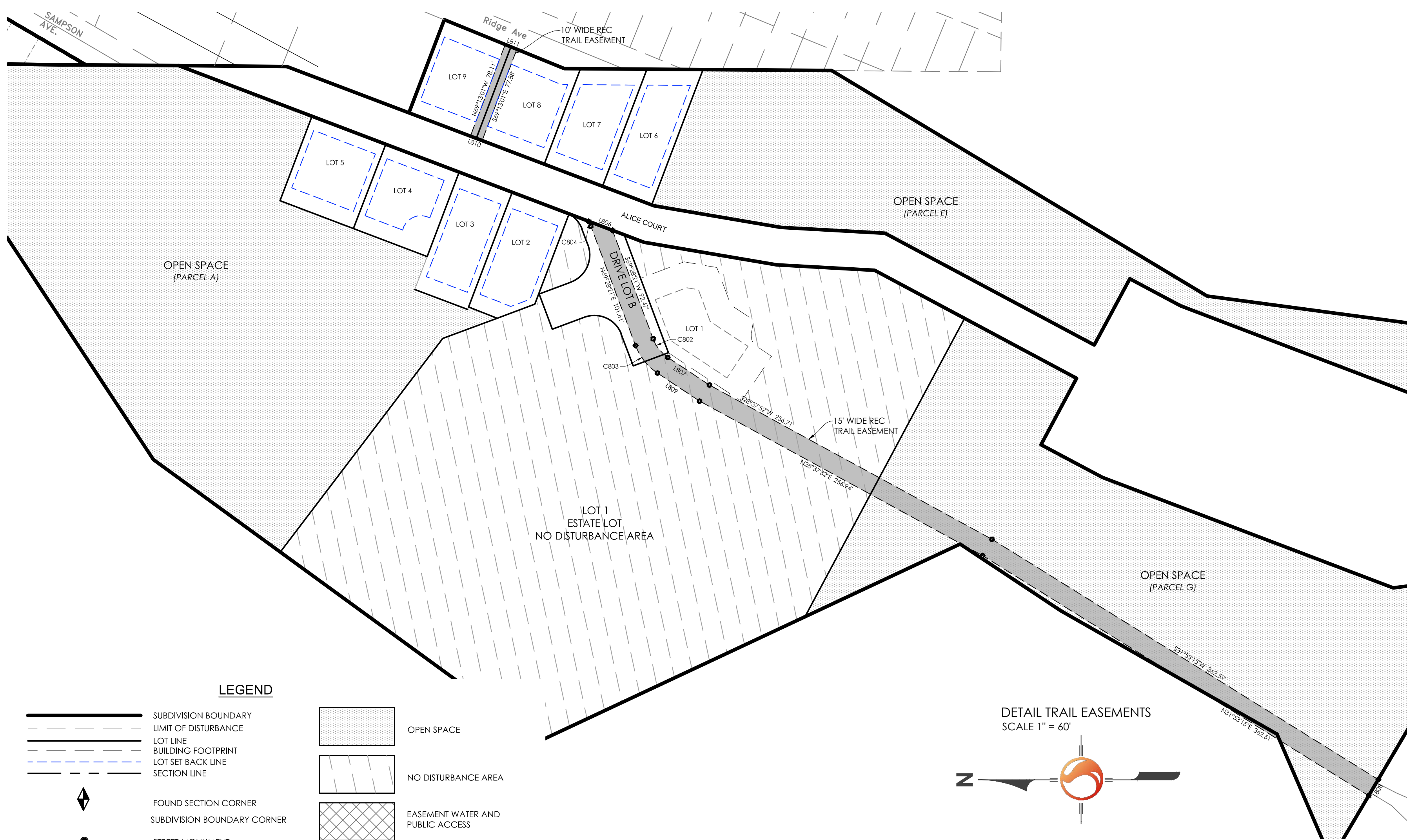


ALICE CLAIM

LOCATED IN THE NORTHEAST QUARTER OF SECTION 21,
TOWNSHIP 2 SOUTH, RANGE 4 EAST, SALT LAKE BASE & MERIDIAN
SUMMIT COUNTY, UTAH

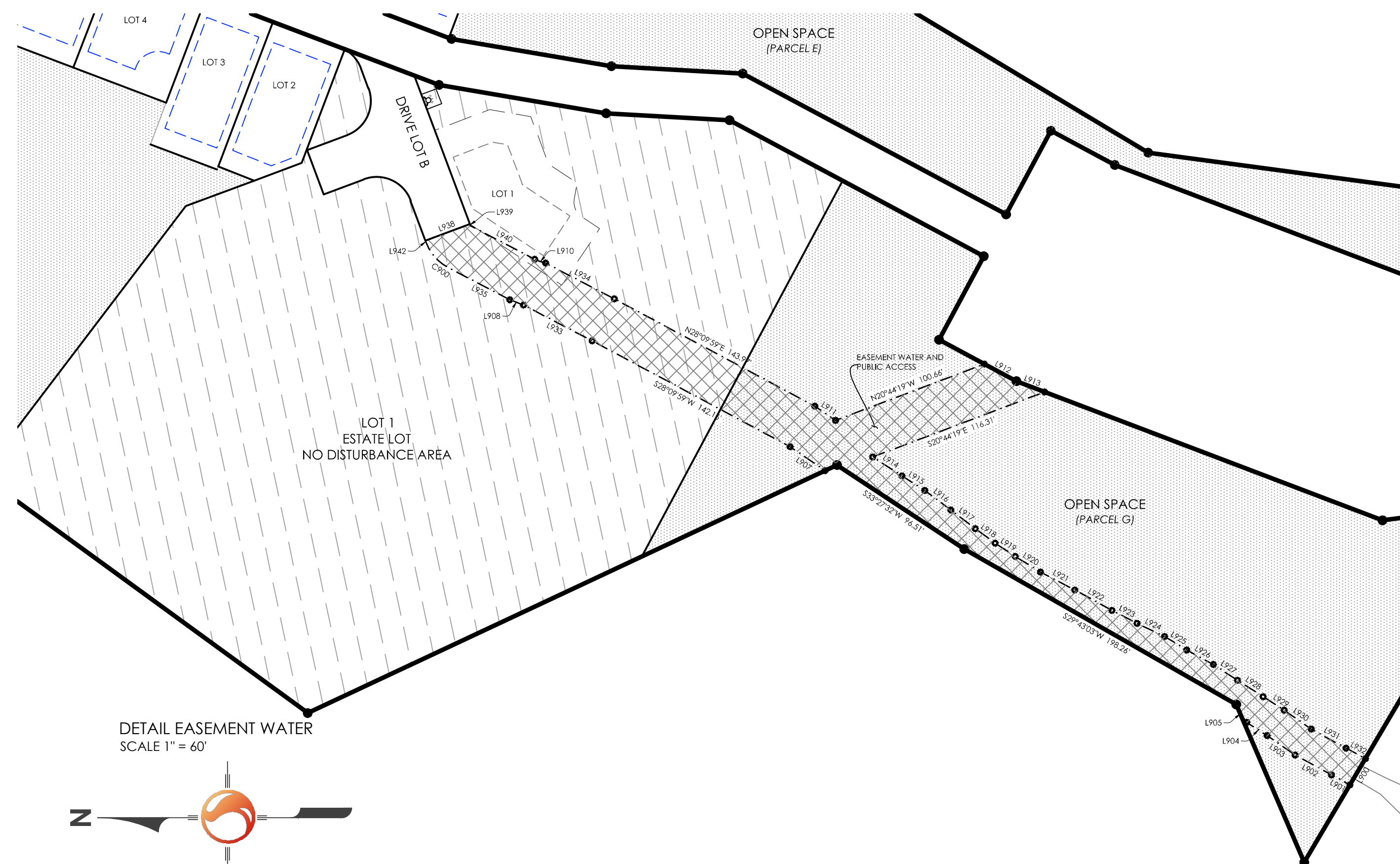


DETAIL TRAIL EASEMENTS
SCALE 1" = 60'



LEGEND

	SUBDIVISION BOUNDARY		OPEN SPACE
	LIMIT OF DISTURBANCE		NO DISTURBANCE AREA
	LOT LINE		EASEMENT WATER AND PUBLIC ACCESS
	BUILDING FOOTPRINT		PUBLIC RECREATIONAL TRAIL EASEMENT
	LOT SET BACK LINE		DRAINAGE EASEMENT
	FOUND SECTION CORNER		
	SUBDIVISION BOUNDARY CORNER		
	STREET MONUMENT		
	PROPOSED FIRE HYDRANT		



DETAIL EASEMENT WATER
SCALE 1" = 60'



DRAINAGE EASEMENT LINE TABLE

LINE #	DIRECTION	LENGTH
L600	S86°51'13"W	10.00
L601	N03°08'47"W	42.74
L602	N03°08'47"W	39.47
L603	N33°14'06"E	66.54
L604	N33°14'06"E	59.99
L605	N49°33'44"E	50.59
L606	N49°33'44"E	102.63
L607	S20°47'00"W	13.29
L608	N70°56'21"E	15.82
L609	S07°46'59"W	279.88
L610	N02°47'00"E	271.25
L611	N02°47'00"E	3.96
L612	S67°52'42"E	13.61
L613	S28°23'00"W	1.71

TRAIL EASEMENT CURVE TABLE

CURVE #	RADIUS	LENGTH	DELTA	CHORD BEARING	CHORD DISTANCE
C900	30.00	19.09	33°51'10"	S51°32'44"W	18.78
C903	43.50	28.47	33°51'10"	N43°32'44"E	28.01
C904	30.50	4.33	87°07'30"	N46°29'43"E	4.32

TRAIL EASEMENT LINE TABLE

LINE #	DIRECTION	LENGTH
L806	S20°47'00"W	20.38
L807	S33°37'12"W	39.71
L808	N59°26'30"W	15.00
L809	N33°37'12"E	40.36
L810	S20°47'01"W	10.00
L811	N22°07'48"E	10.00

WATER / PUBLIC EASEMENT ACCESS LINE TABLE

LINE #	DIRECTION	LENGTH
L900	S39°27'19"E	19.32
L901	S28°43'47"W	13.32
L902	S28°33'46"W	26.21
L903	S34°51'18"W	21.55
L904	S32°54'57"W	15.44
L905	S46°40'25"W	10.64
L907	S34°23'17"W	26.73
L908	S22°03'00"W	9.86
L910	N18°09'35"E	6.83
L911	N34°23'17"E	15.89
L912	N28°07'11"E	22.98
L913	N20°48'11"E	19.44
L914	N20°48'30"E	21.66
L915	N20°33'40"E	17.94
L916	N34°52'23"E	20.44
L917	N37°12'22"E	19.50
L918	N24°12'27"E	15.52
L919	N33°14'29"E	15.23
L920	N31°54'37"E	18.84
L921	N27°34'03"E	24.44
L922	N28°44'42"E	24.82
L923	N27°24'41"E	17.87

WATER / PUBLIC EASEMENT ACCESS LINE TABLE

LINE #	DIRECTION	LENGTH
L924	N29°23'29"E	19.31
L925	N31°29'39"E	16.45
L926	N28°30'29"E	19.27
L927	N33°14'48"E	18.16
L928	N32°29'39"E	19.32
L929	N32°54'57"E	15.83
L930	N34°51'19"E	20.81
L931	N28°33'46"E	25.17
L932	N28°43'47"E	13.96
L933	S27°29'25"W	48.93
L934	N27°29'25"E	49.01
L935	N27°54'10"E	42.40
L936	S20°31'39"E	30.00
L939	N49°33'21"E	1.06
L940	N27°54'10"E	44.84
L942	N49°28'21"E	1.06

WATER / PUBLIC EASEMENT CURVE TABLE

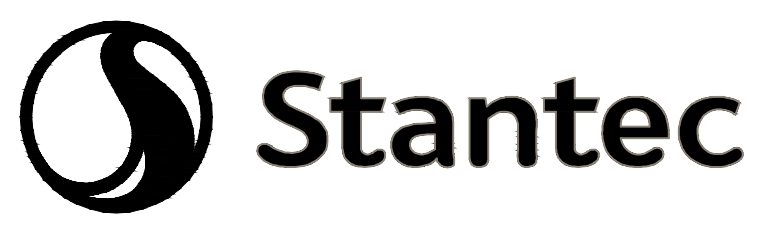
CURVE #	RADIUS	LENGTH	DELTA	CHORD BEARING	CHORD DISTANCE
C900	30.00	21.94	41°54'11"	N46°31'16"E	21.45

SHEET
2 OF 2

ALICE CLAIM

LOCATED IN THE NORTHEAST QUARTER OF SECTION 21,
TOWNSHIP 2 SOUTH, RANGE 4 EAST, SALT LAKE BASE & MERIDIAN
SUMMIT COUNTY, UTAH

RECORDED # _____
STATE OF UTAH, COUNTY OF SUMMIT, RECORD AND FIELD THE
REQUEST OF _____
DATE: _____ TIME: _____ BOOK: _____ PAGE: _____
FEE: _____ COUNTY RECORDER



Stantec Consulting Services Inc.
3995 S 700 E Ste. 300
Salt Lake City, UT
84107-2640
Tel. 801.261.0090
Fax. 801.266.1671
www.stantec.com

Project Number	PM
205303057	SB
Filename	Plot Date
03057v_1b.dwg	02/19/17
Designed By	Drawn By
SB	BD
Checked By	Date
GAC	02/09/17
Scale	Date Issued
1" = 60'	
By	Date

PRELIMINARY

V:\2053\Projects\205303057\Drawing\survey\plot_3057n_ib_a02.dwg
2/10/2017 9:57 AM Admin Jeron