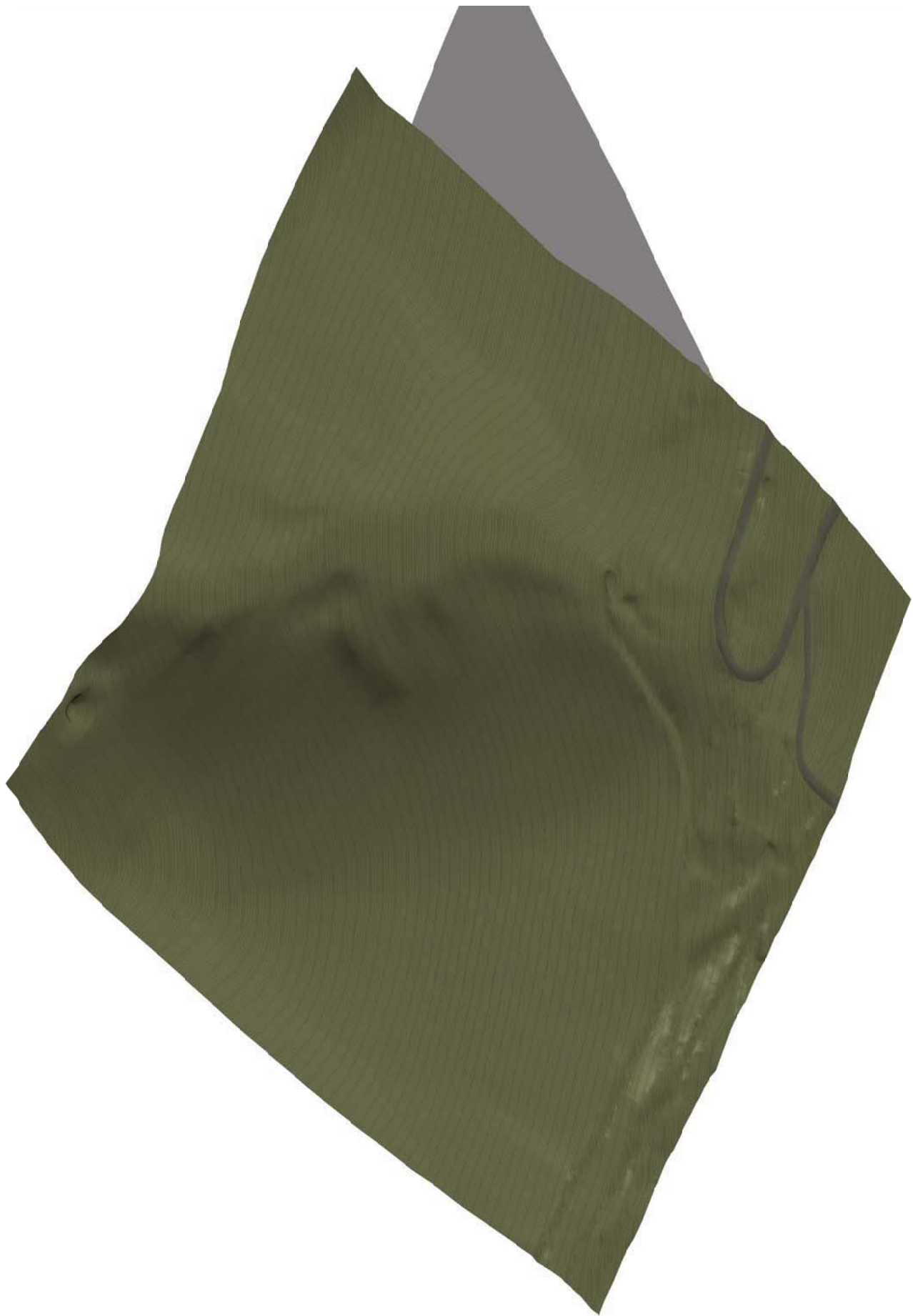
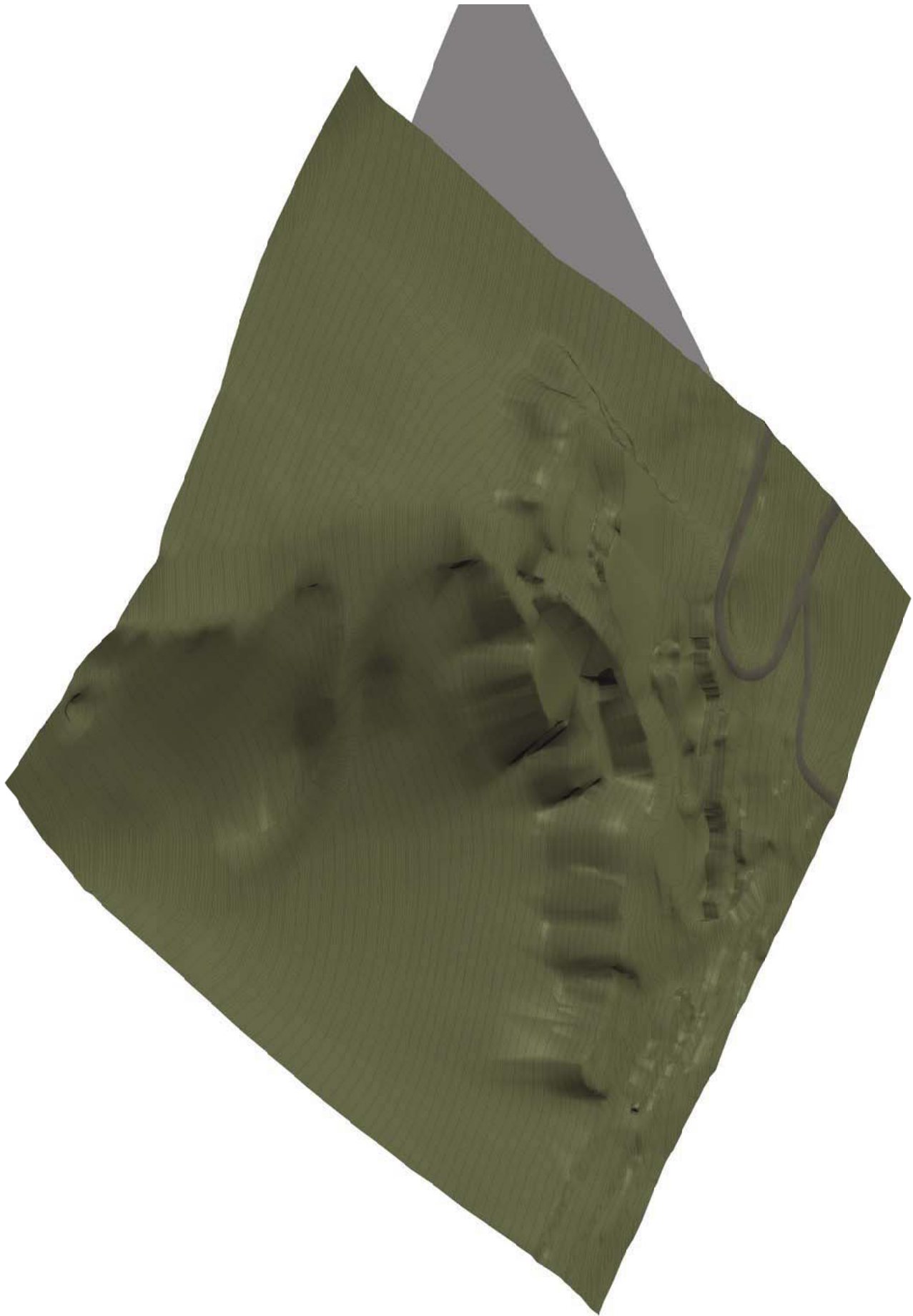
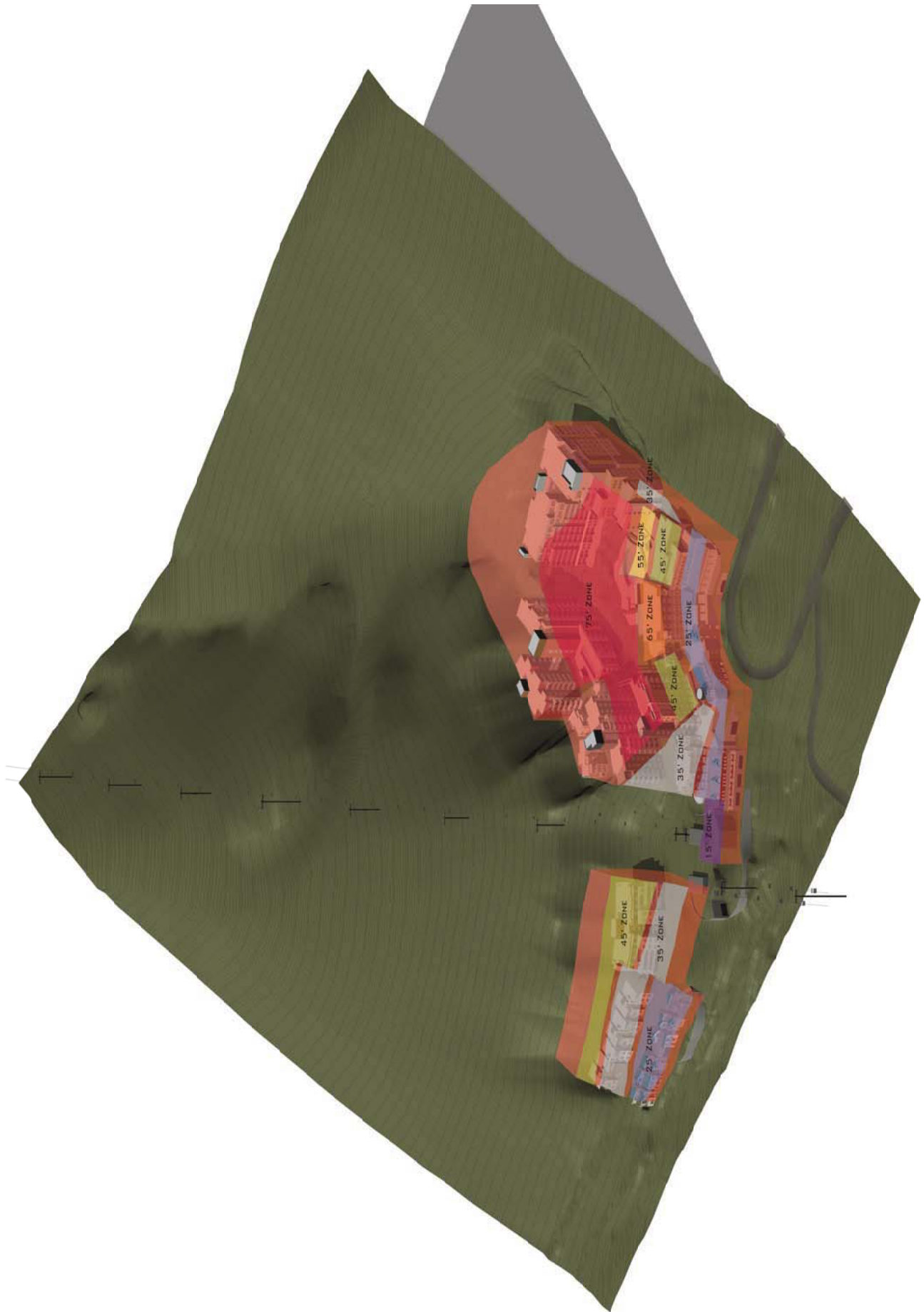
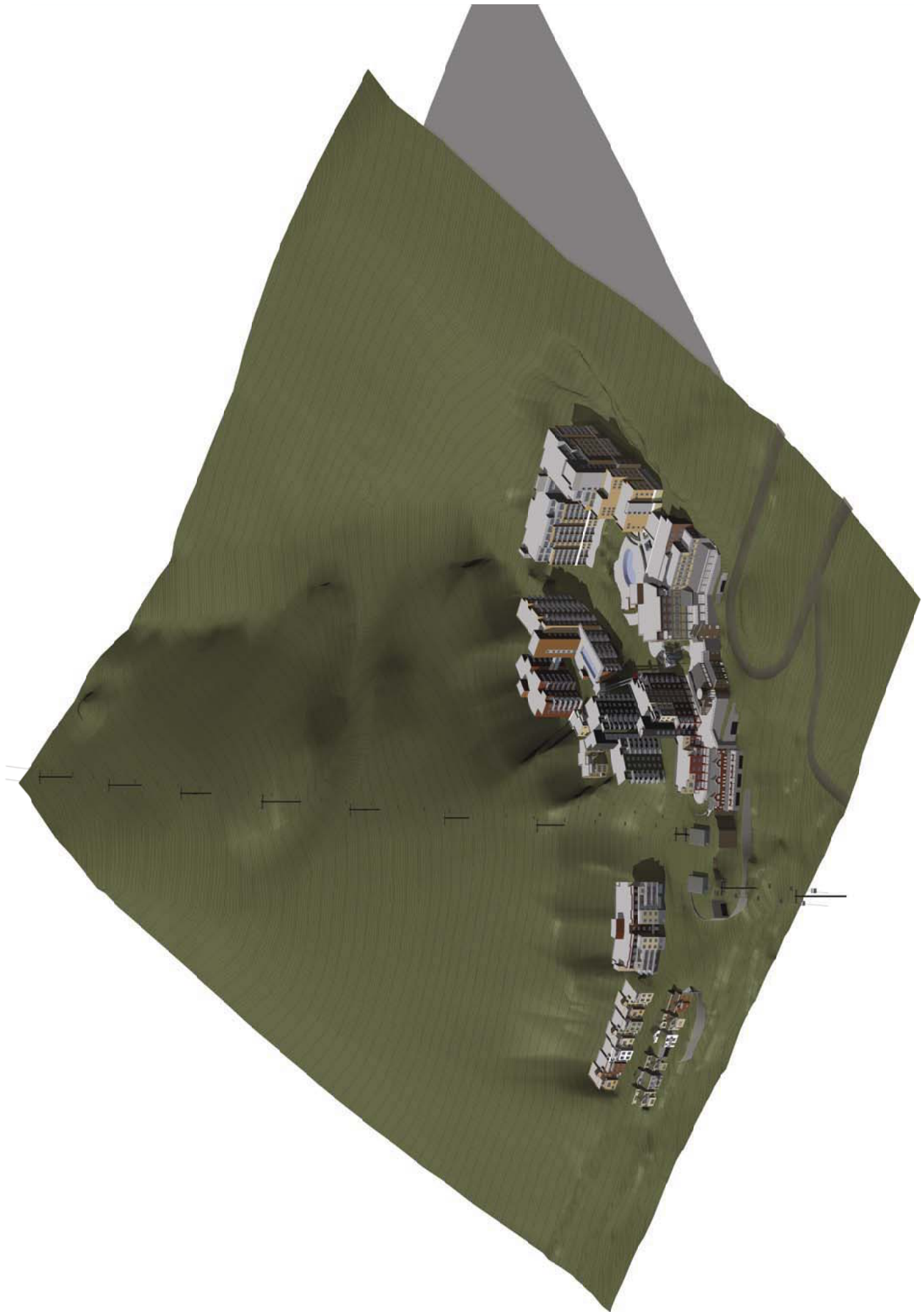


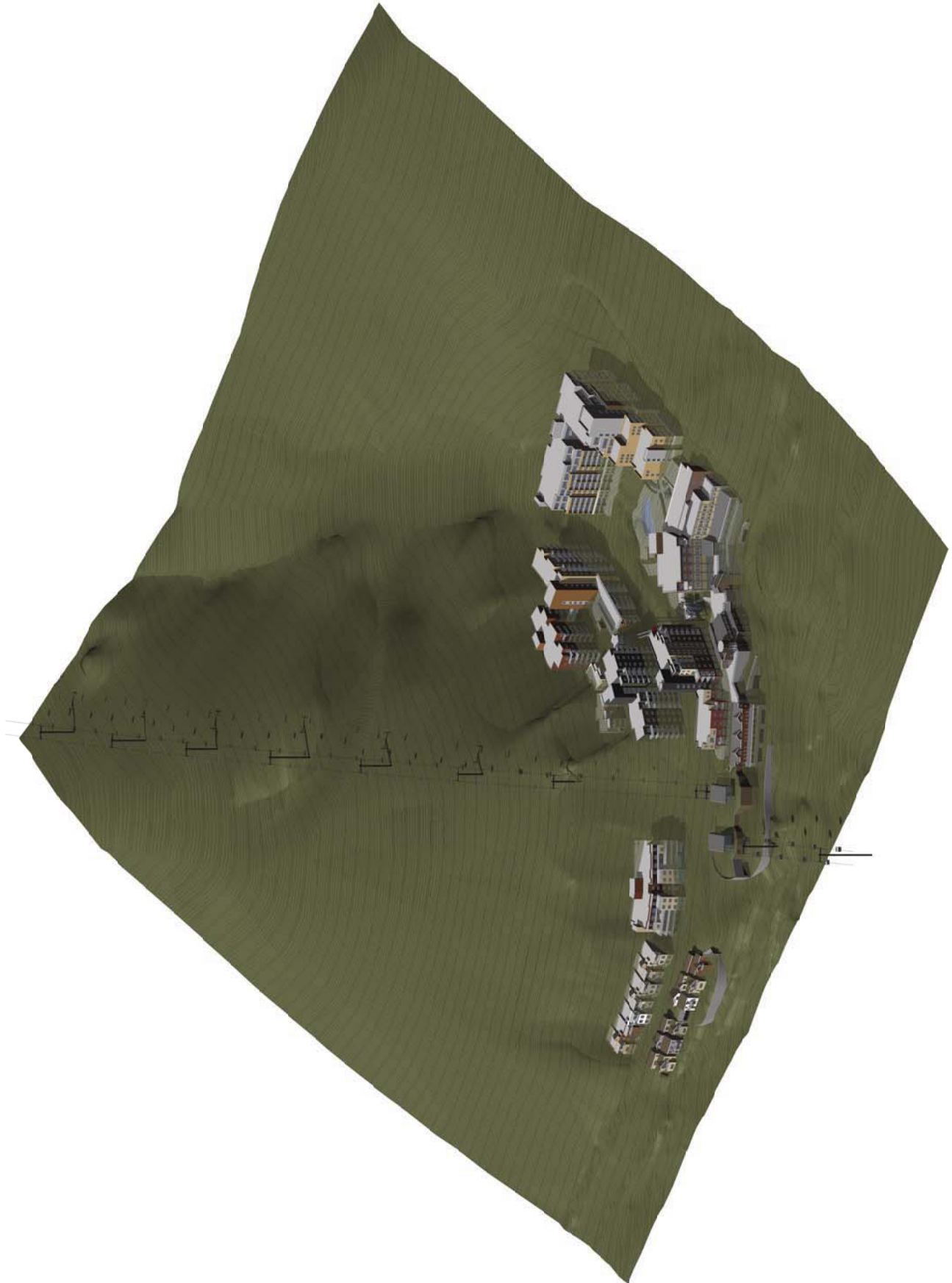
Exhibit BB – Treasure Presentation Cliffscapes



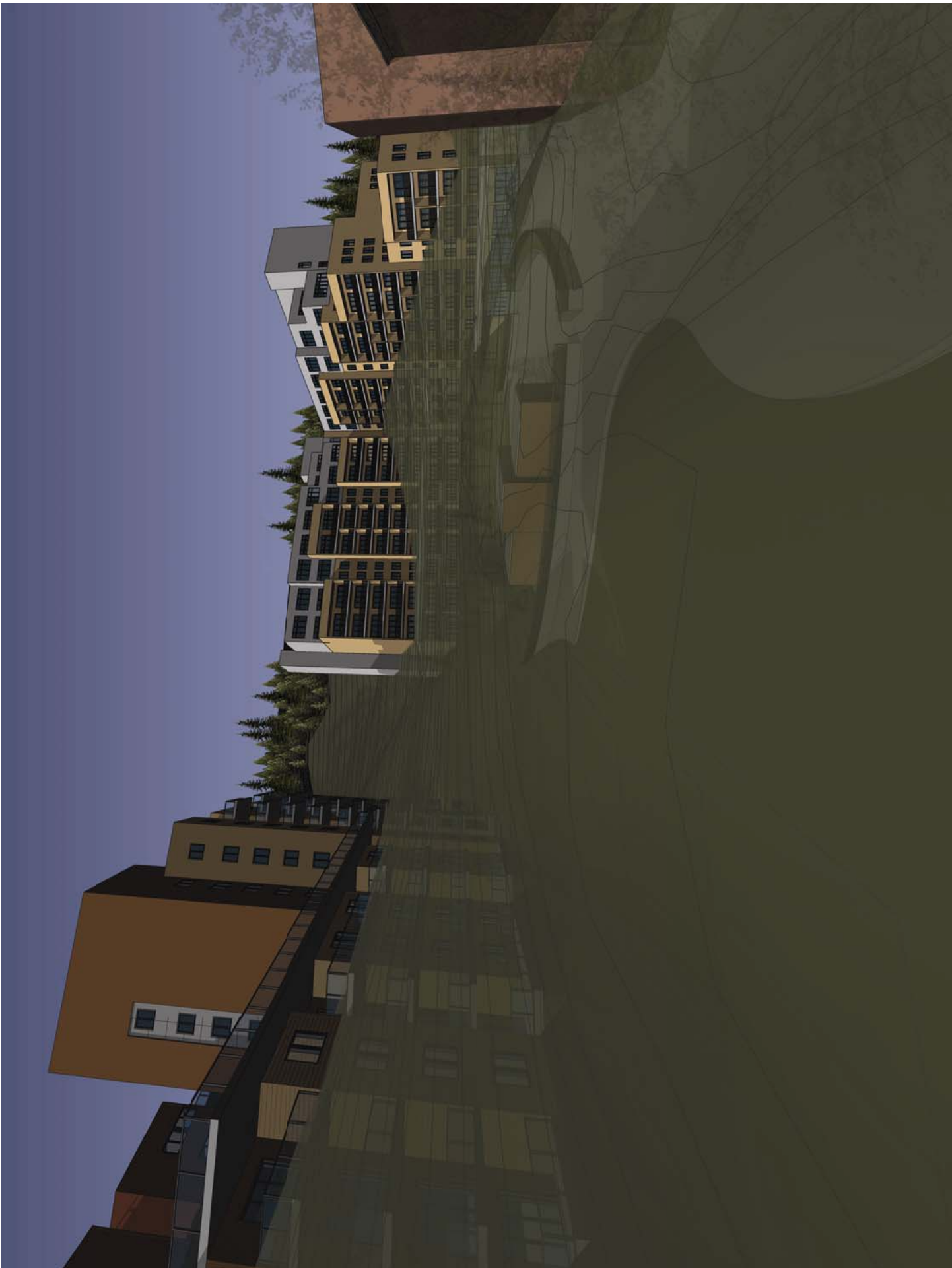




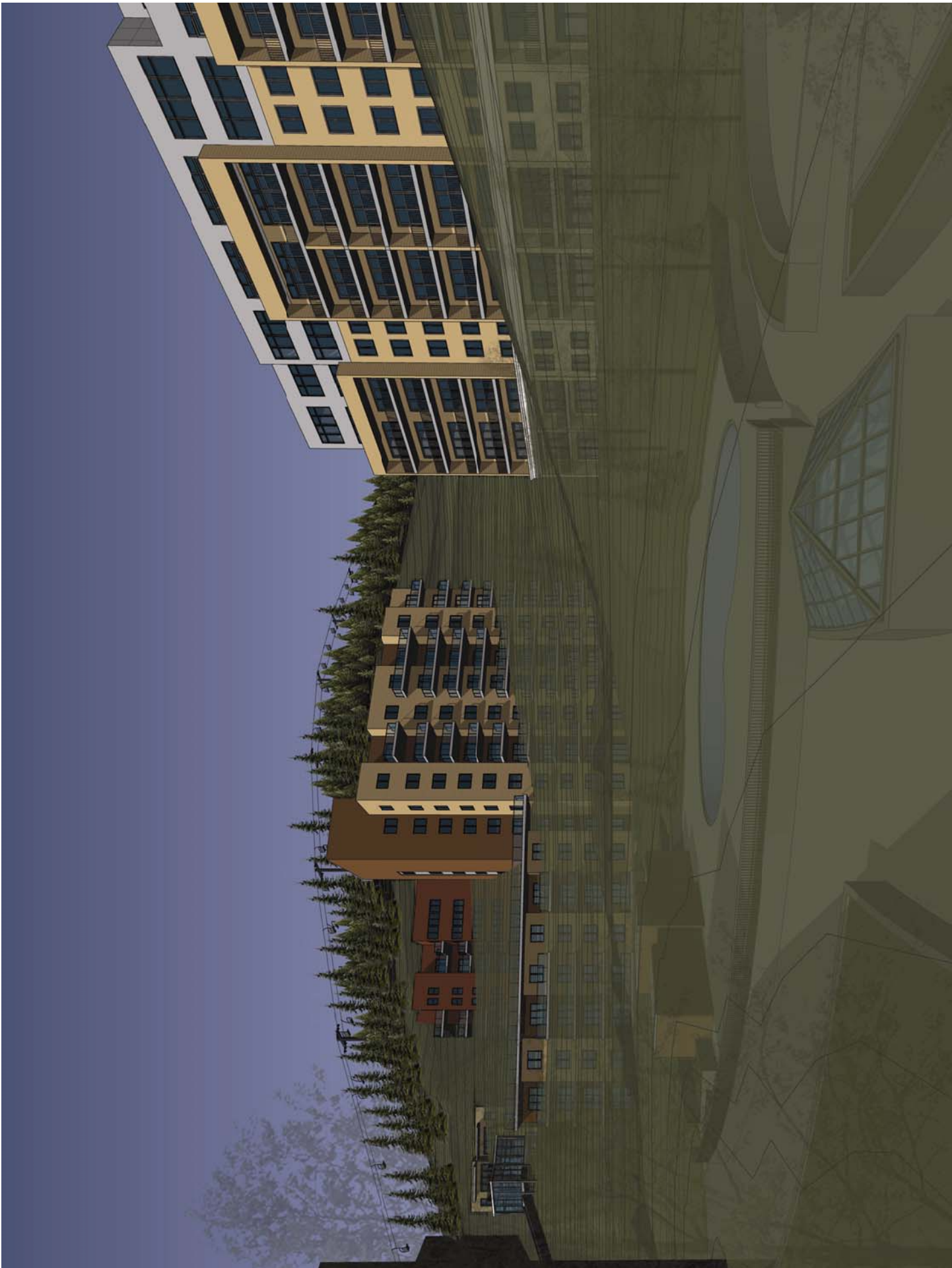


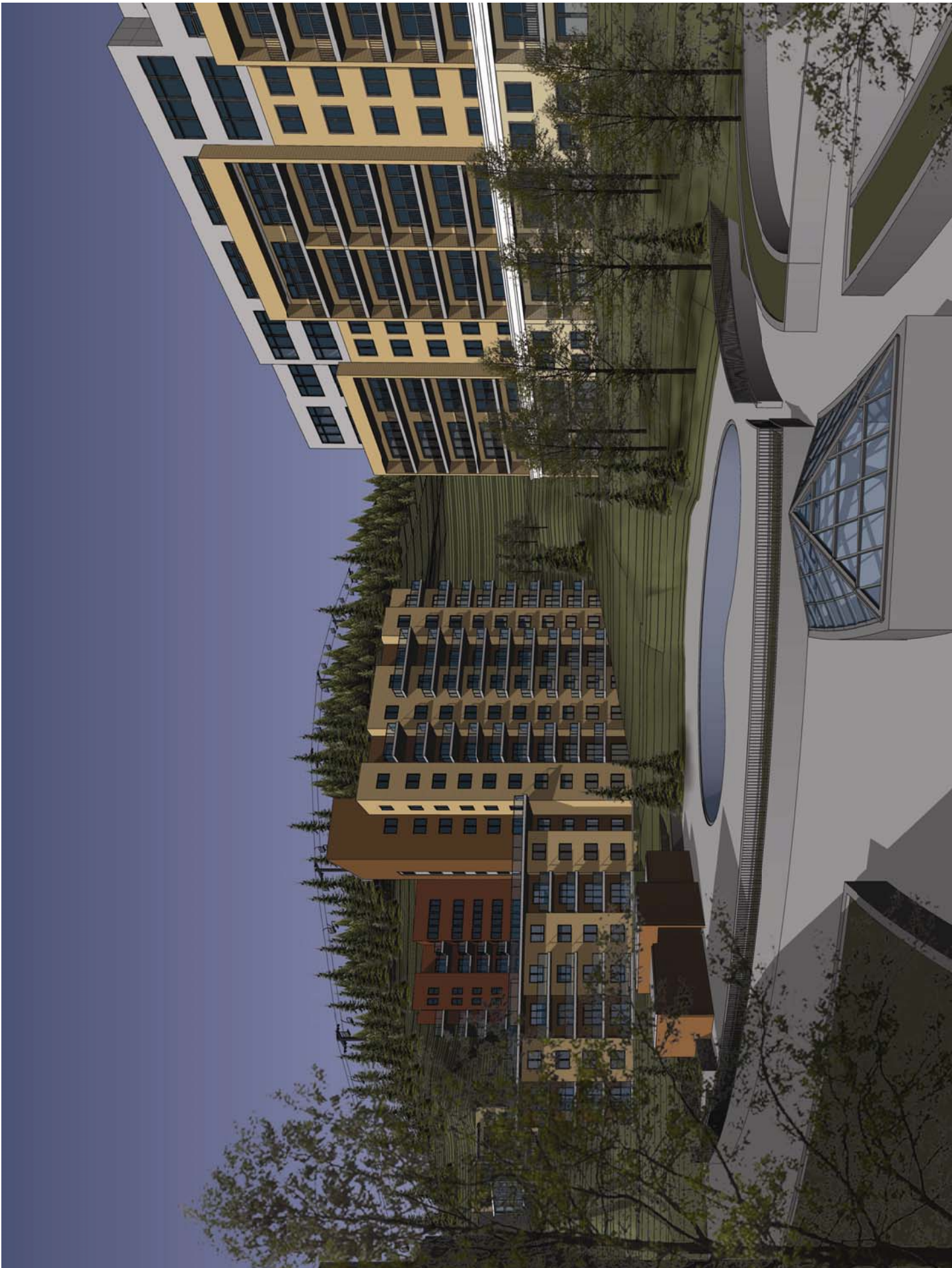










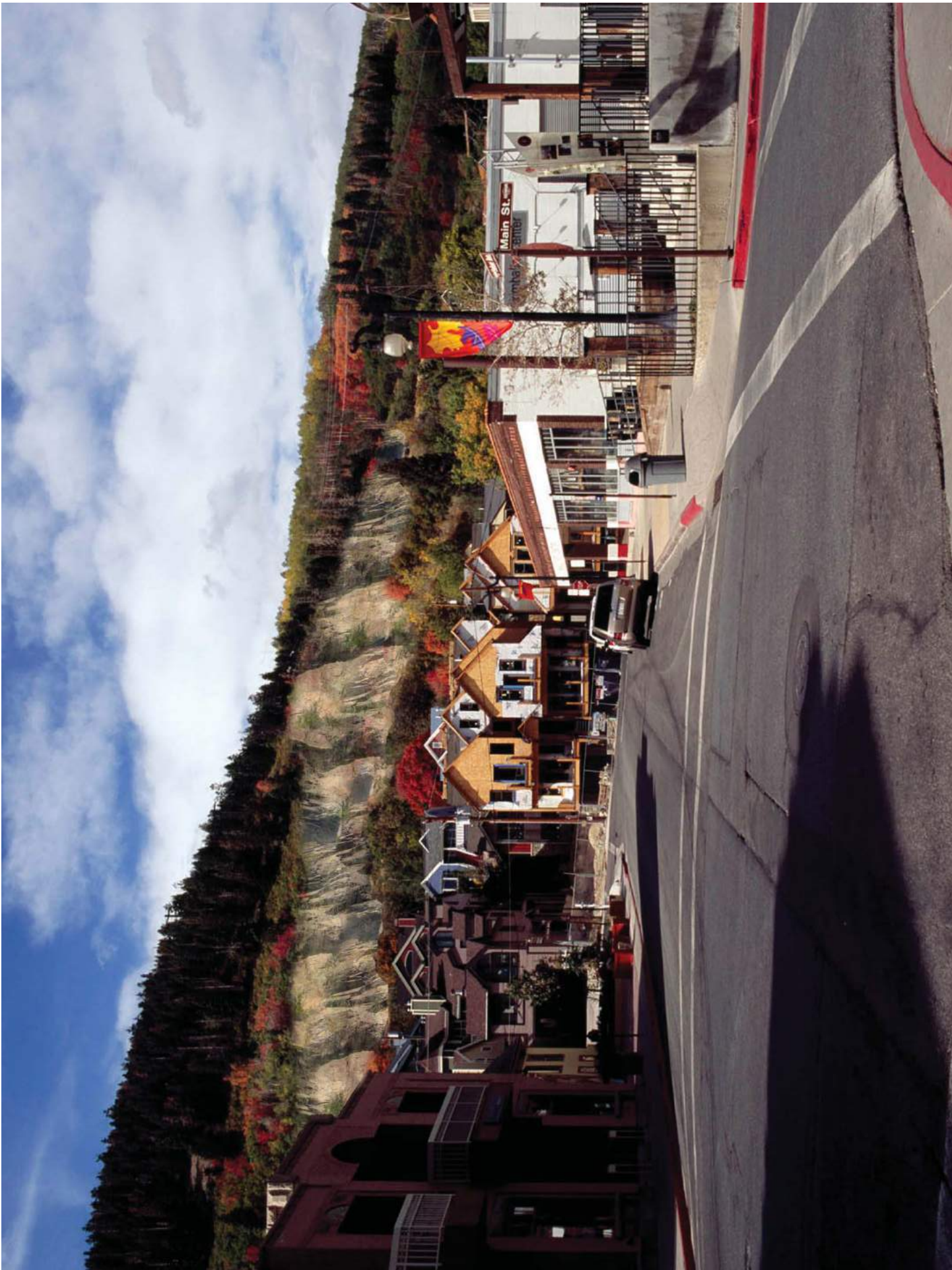












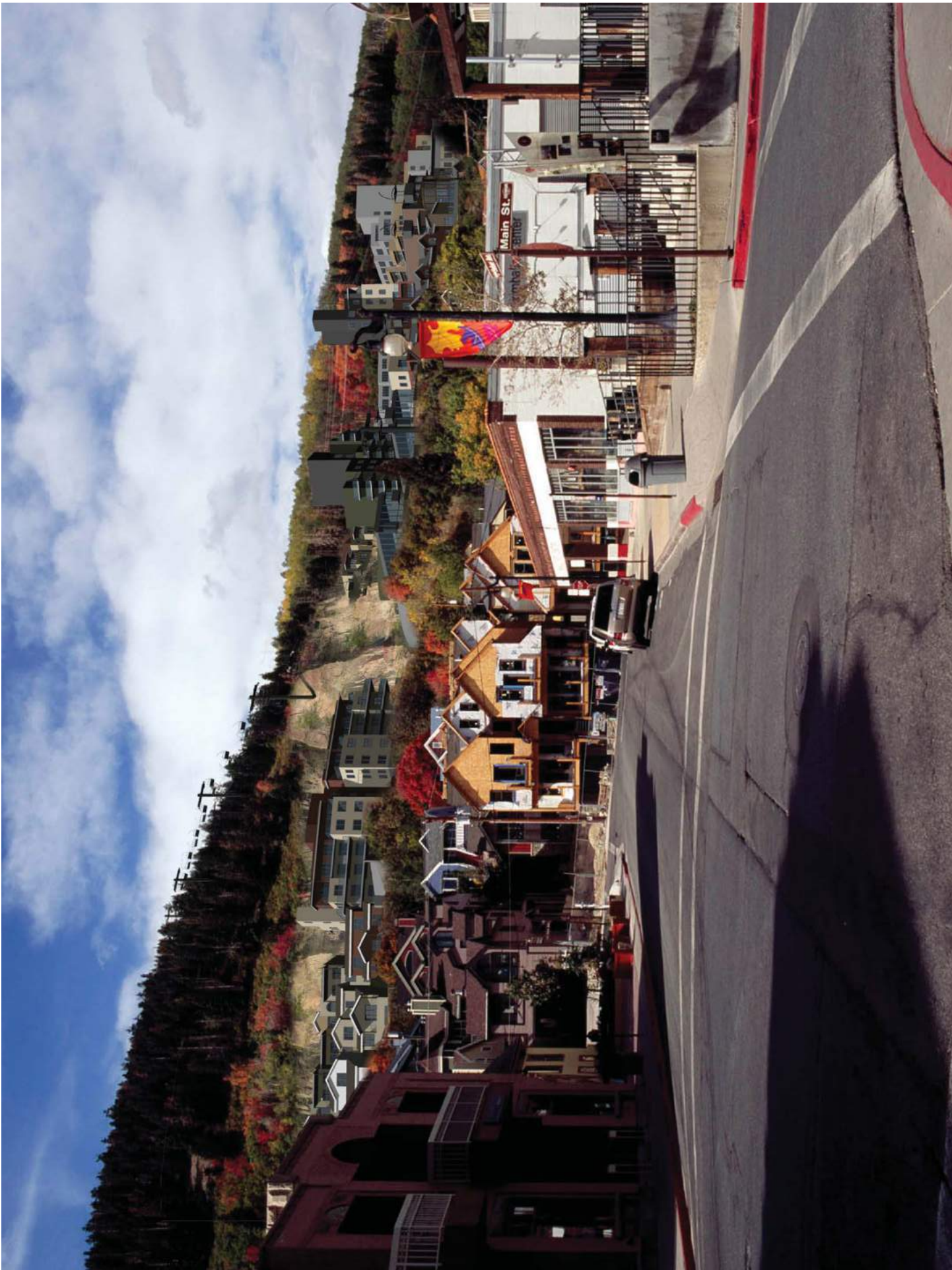










Exhibit CC – Applicant’s Computer Renderings (from applicant’s website)





CR-02-All Creole













4B

4A

4A

3A

5C

3B



32'

125'

47'

4B

86'

126'

45'

107'

35'

4A

98'

4A

106'

90'

64'

46'

5C

61'

3B

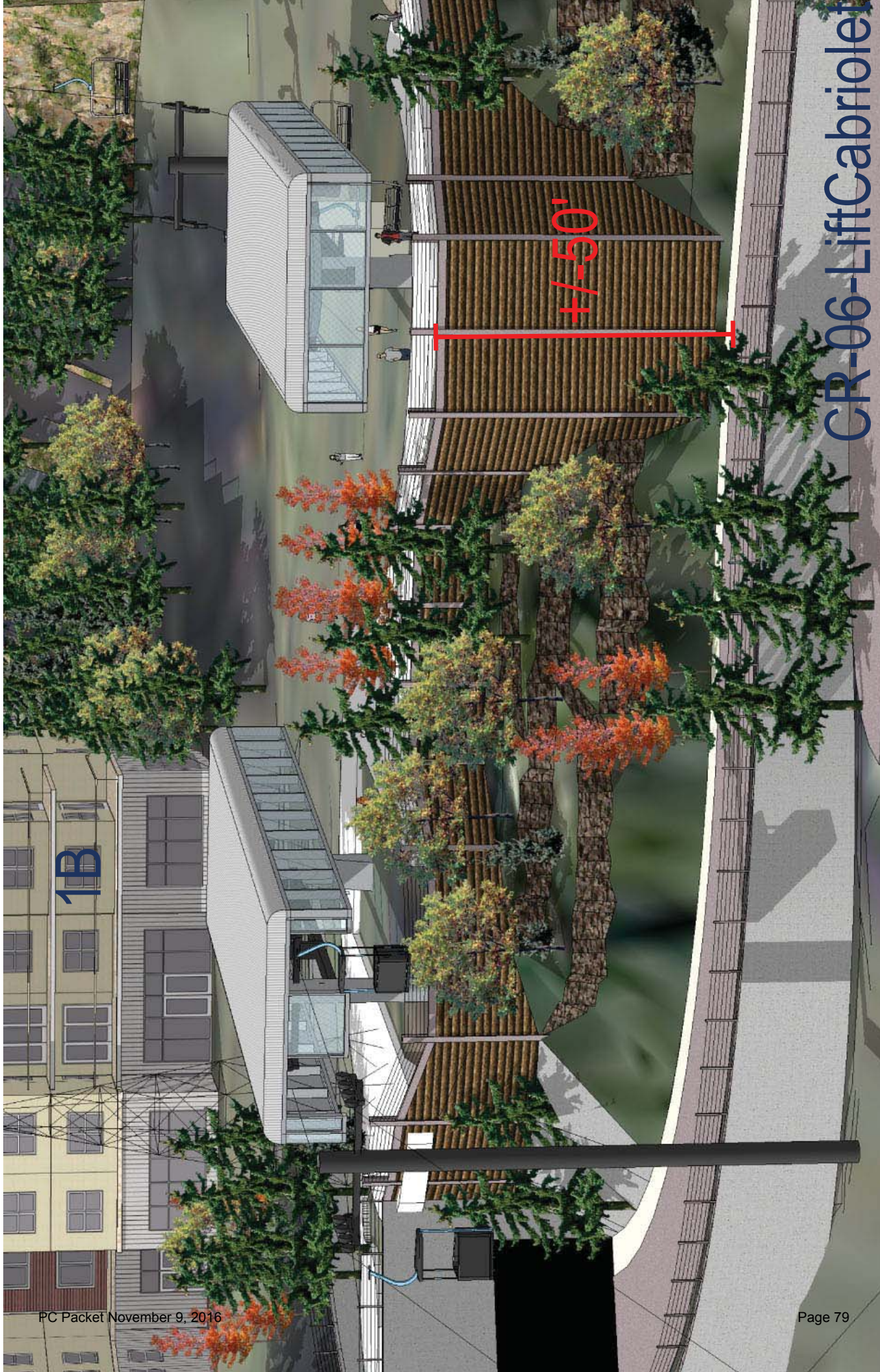
3A

26'

63'

30'















CR-09 Pools



CR-09 Pools







3C

2

B



3C

2

B



CR-12 Hotel/Pool





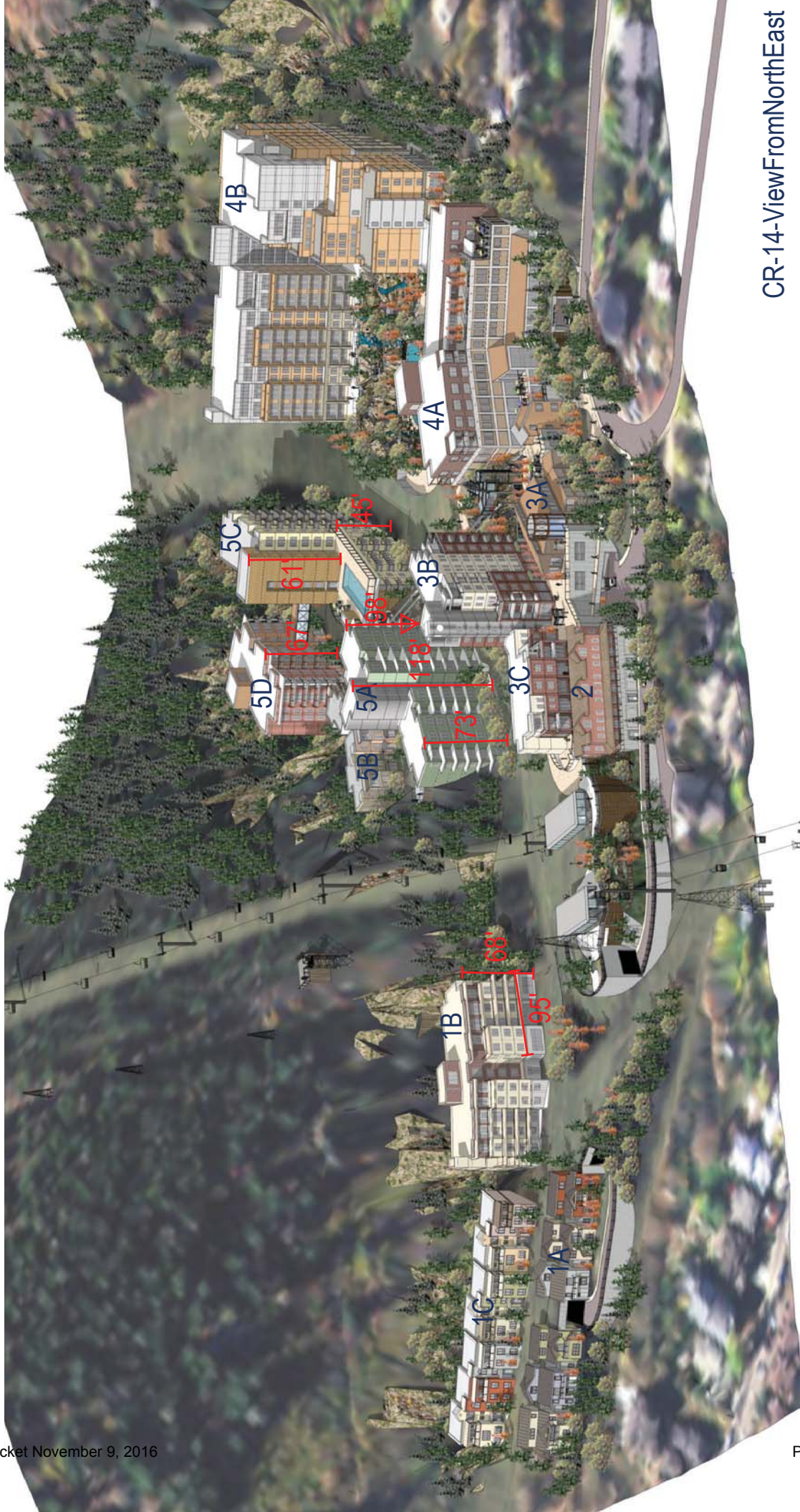
CR-13-ViewFromNorthWest



CR-13-ViewFromNorthWest



CR-14-ViewFromNorthEast



CR-14-ViewFromNorthEast

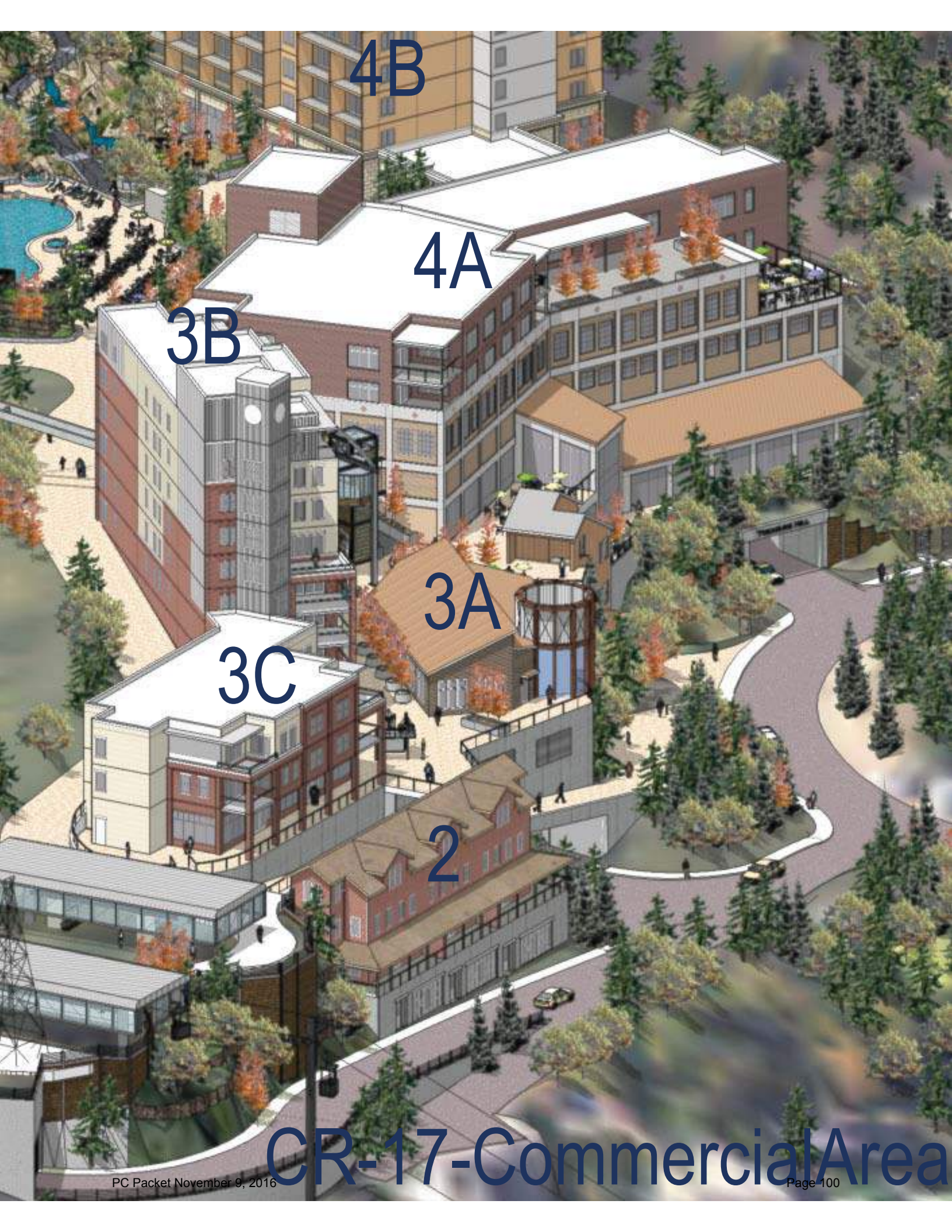




CR-15-ViewFromEast







4B

4A

3B

3A

3C

2

CR-17-Commercial Area



4B

4A

3B

3A

3C

2

CR-17-Commercial Area



CR-18-Areat



CR-18-Area 1











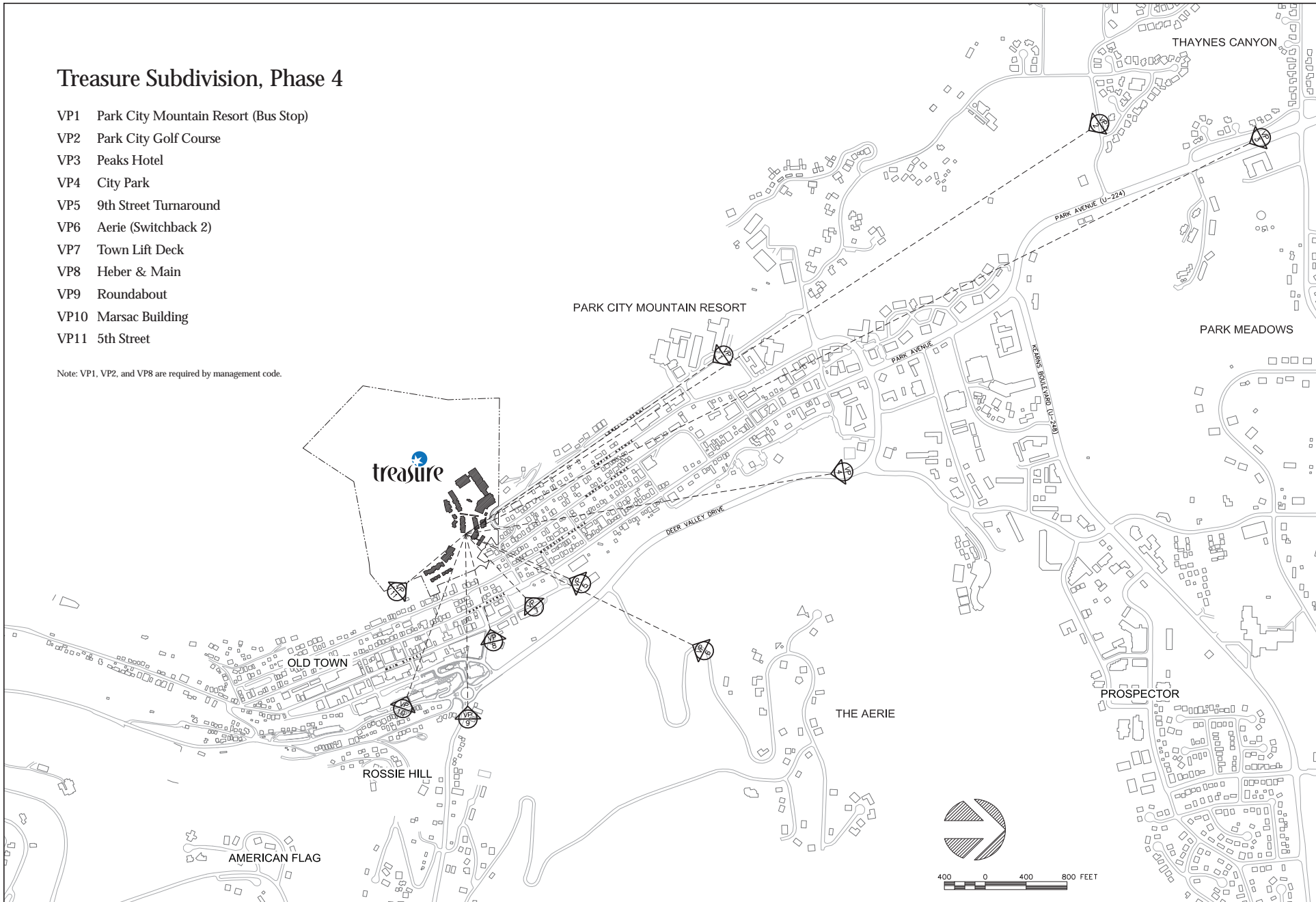


Exhibit EE – Applicant’s Visualizations Sheets V-21 – V-27

Treasure Subdivision, Phase 4

- VP1 Park City Mountain Resort (Bus Stop)
- VP2 Park City Golf Course
- VP3 Peaks Hotel
- VP4 City Park
- VP5 9th Street Turnaround
- VP6 Aerie (Switchback 2)
- VP7 Town Lift Deck
- VP8 Heber & Main
- VP9 Roundabout
- VP10 Marsac Building
- VP11 5th Street

Note: VP1, VP2, and VP8 are required by management code.



REVISIONS:

SDI
614 Main Street, Suite 404
P.O. Box 4560, Park City, Utah 84060
435-643-4469



MPE
INCORPORATED

Viewpoints Index
Developed by
MPE, INC., PO Box 2429, Park City, UT 84060
eMail: info@treasureparkcity.com



SHEET NUMBER

V-21

6/12/2008



Viewpoint 1 Park City Mountain Resort



Viewpoint 2 Park City Golf Course

REVISIONS:

SDI
614 Main Street, Suite 404
P.O. Box 4560, Park City, Utah 84060
435-694-4466



MPE
INCORPORATED

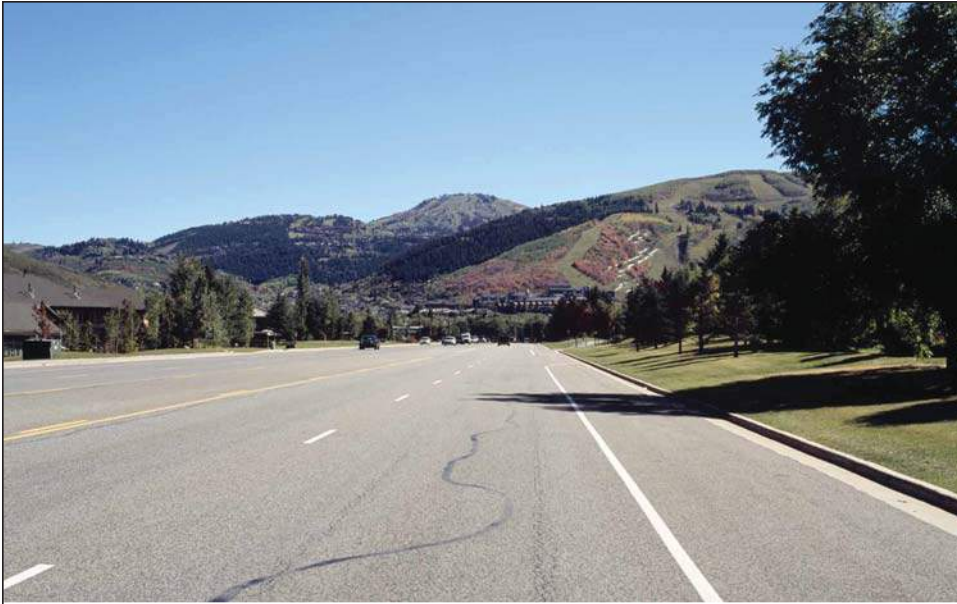
Camera Viewpoints 2
Developed by
MPE, INC., PO Box 2429, Park City, UT 84060
eMail: info@treasureparkcity.com

treasure
PARK CITY, UTAH

SHEET NUMBER

V-22

6/12/2008



Viewpoint 3 Peaks Hotel



Viewpoint 4 City Park

REVISIONS:

SDI
614 Main Street, Suite 404
P.O. Box 4560, Park City, Utah 84060
435-648-4466



MPE
INCORPORATED

Camera Viewpoints 4
Developed by
MPE, INC., PO Box 2429, Park City, UT 84060
eMail: info@treasureparkcity.com



SHEET NUMBER

V-2

6/12/2008



Viewpoint 5 9th Street Turnaround



Viewpoint 6 Aerie (Switchback 2)

REVISIONS:

SDI
614 Mall Street, Suite 404
P.O. Box 4560, Park City, Utah 84060
435-648-4466



MPE
INCORPORATED

Camera Viewpoints 6
Developed by
MPE, INC., PO Box 2429, Park City, UT 84060
eMail: info@treasureparkcity.com

treasure
PARK CITY, UTAH

SHEET NUMBER

V-2

6/12/2008



Viewpoint 7 Town Lift Deck



Viewpoint 8 Heber & Main

REVISIONS:

SDI

614 Mall Street, Suite 404
P.O. Box 4560, Park City, Utah 84060
435-648-4469



MPE
INCORPORATED

8

Camera Viewpoints

Developed by
MPE, INC., PO Box 2429, Park City, UT 84060
eMail: info@treasureparkcity.com

treasure
PARK CITY, UTAH

SHEET NUMBER

V-2

6/12/2008



Viewpoint 9 Roundabout



Viewpoint 10 Marsac Building

REVISIONS:

SDI
614 Main Street, Suite 404
P.O. Box 4560, Park City, Utah 84060
435-644-4469



MPE
INCORPORATED

Camera Viewpoints 9 0
Developed by
MPE, INC., PO Box 2429, Park City, UT 84060
eMail: info@treasureparkcity.com

treasure
PARK CITY, UTAH

SHEET NUMBER

V-26

6/12/2008



Viewpoint 11 5th Street

REVISIONS:

SDI
614 Main Street, Suite 404
P.O. Box 4560, Park City, Utah 84060
435-648-4469



MPE
INCORPORATED

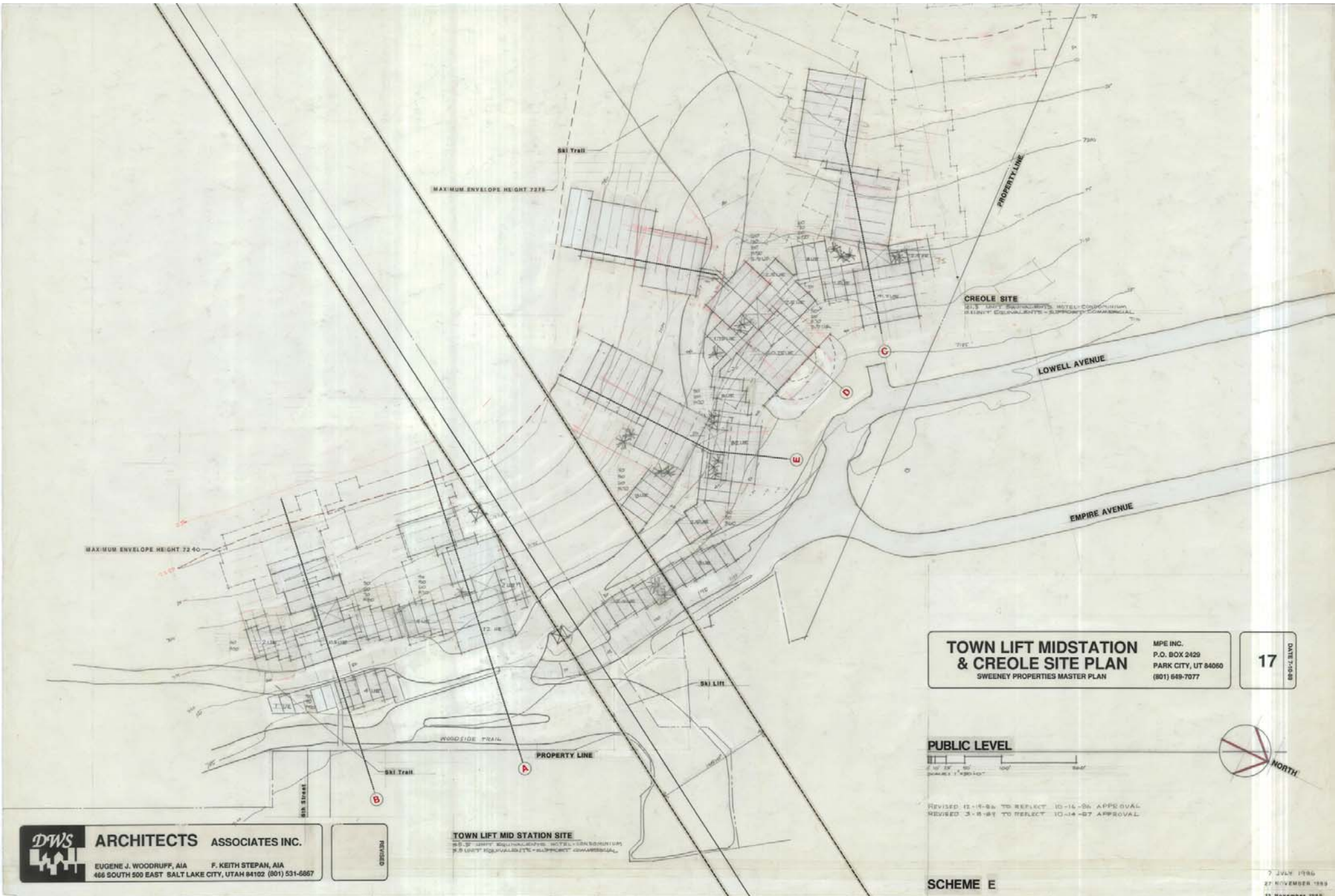
Camera Viewpoint
Developed by
MPE, INC., PO Box 2429, Park City, UT 84060
eMail: info@treasureparkcity.com

treasure
PARK CITY, UTAH

SHEET NUMBER

V-2
6/12/2008

Exhibit FF – SPMP Site Plan (Sheet 17)



DWS ARCHITECTS ASSOCIATES INC.
 EUGENE J. WOODRUFF, AIA F. KEITH STEPAN, AIA
 466 SOUTH 500 EAST SALT LAKE CITY, UTAH 84102 (801) 531-6867

REVISION

TOWN LIFT MID STATION SITE
 85.3 UNIT RESIDENTIAL HOTEL CONDOMINIUM
 9.9 UNIT RESIDENTIAL SUPPORT COMMERCIAL

TOWN LIFT MIDSTATION & CREOLE SITE PLAN
 SWEENEY PROPERTIES MASTER PLAN

MPE INC.
 P.O. BOX 2429
 PARK CITY, UT 84060
 (801) 649-7077

17
 DATE 7-18-89

PUBLIC LEVEL

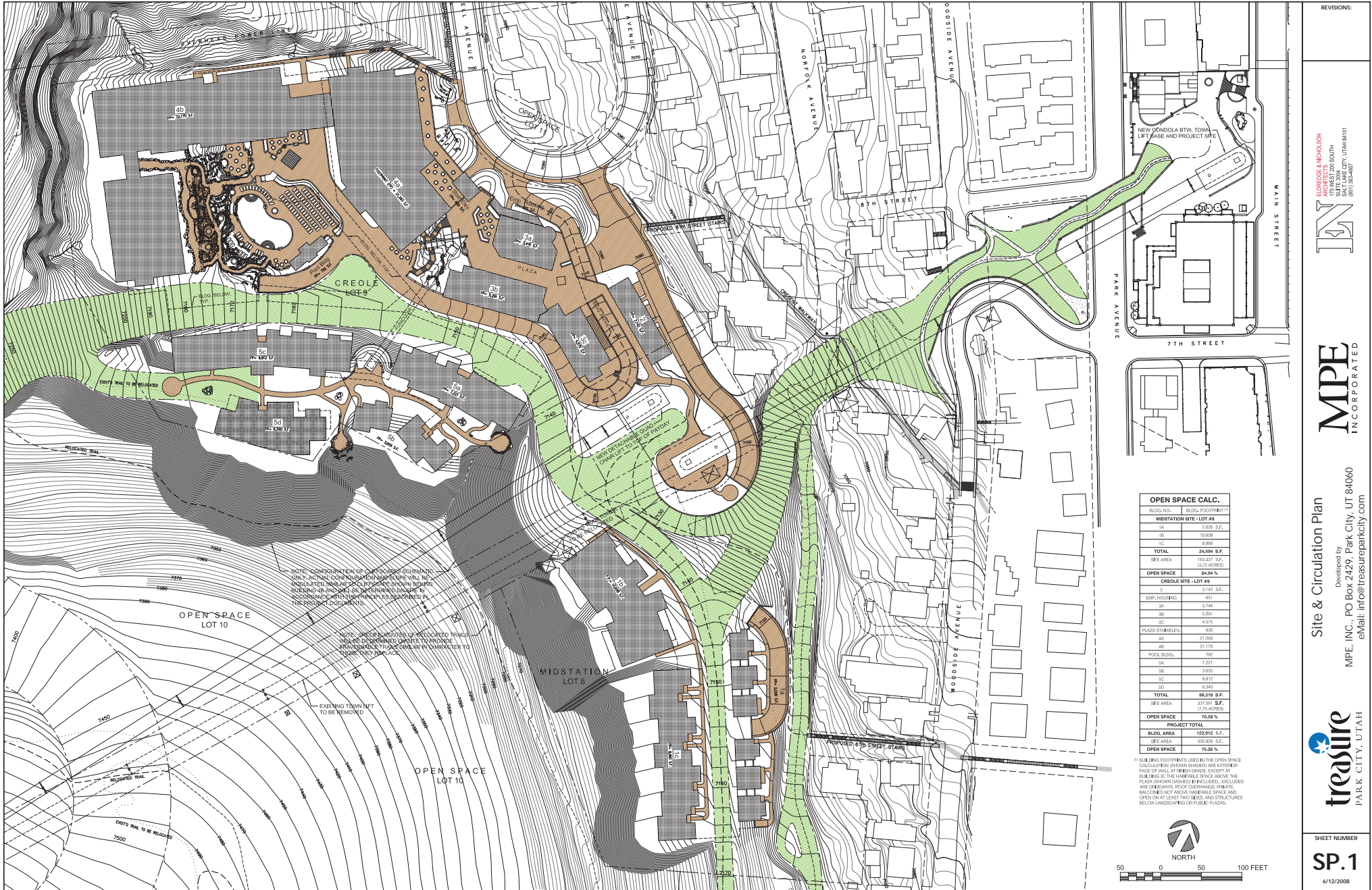


REVISED 11-19-86 TO REFLECT 10-16-86 APPROVAL
 REVISED 3-8-87 TO REFLECT 10-14-87 APPROVAL

SCHEME E

7 JULY 1986
 27 NOVEMBER 1989
 13 NOVEMBER 1988

Exhibit GG – Proposed Site Plan



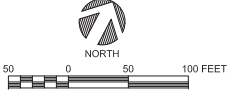
NOTE: CONFIGURATION OF OFFSPACES SCHEMATIC ONLY. ACTUAL CONFIGURATION AND SIZE WILL BE DETERMINED AFTER CONSTRUCTION OF BUILDINGS AND SHALL BE DETERMINED IN ACCORDANCE WITH THE FINAL PLANS SUBMITTED IN THE PROJECT DOCUMENTS.

NOTE: SPECIFIC LOCATIONS OF RELOCATED TRAILS INDICATE DETERMINED SPACES TO PROVIDE SUFFICIENT TRAIL QUALITY IN COMPLIANCE TO CURRENTLY IN PLACE.

EXISTING TOWN NET TO BE REMOVED

OPEN SPACE CALC.	
BLDG. NO.	BLDG. FOOTPRINT (S.F.)
MIDSTATION SITE - LOT #8	
1A	5,038 S.F.
1B	18,008
1C	8,800
TOTAL	31,846 S.F.
SITE AREA	163,237 S.F.
	(129,420 SQ. FT.)
OPEN SPACE	84.94%
CREOLE SITE - LOT #9	
EMP. HOUSING	3,742 S.F.
2A	3,748
3B	5,294
3C	4,575
PLAZA STRIP (BLDG.)	100
4A	21,290
4B	31,170
POOL BLDG.	790
5A	7,224
5B	3,805
5C	9,812
TOTAL	99,118 S.F.
SITE AREA	337,991 S.F.
	(129,420 SQ. FT.)
OPEN SPACE	76.58%
PROJECT TOTAL	
BLDG. AREA	123,812 S.F.
SITE AREA	500,238 S.F.
OPEN SPACE	79.28%

IF BUILDING FOOTPRINTS USED IN THE OPEN SPACE CALCULATION (AS SHOWN SHADDED) ARE EXTERIOR SPACE OR WALL-FRONT SPACE, EXCEPT FOR BUILDINGS OR THE HABITABLE SPACE ABOVE THE PLAZA (AS SHOWN SHADDED), EXCLUDED ARE CHIMNEYS, ROOF OVERHANGS, PRIVATE BALCONIES, NOT ABOVE HABITABLE SPACE AND OPEN ON AT LEAST TWO SIDES, AND STRUCTURES BELOW AND ABOVE OR PUBLIC PLAZAS.



REVISIONS:

ELDRIDGE & MCDONALD
175 WEST 200 SOUTH
SALT LAKE CITY, UTAH 84143
(801) 354-4667

MPE
INCORPORATED

Site & Circulation Plan
Developed by
MPE, INC., PO Box 2429, Park City, UT 84060
eMail: info@treasureparkcity.com

treasure
PARK CITY, UTAH

SHEET NUMBER

SP.1

6/12/2008