

USE LEGEND

- RESIDENTIAL: Hotel (Net Area)
- RESIDENTIAL: Club (Net Area)
- RESIDENTIAL: Residences (Net Area)
- CIRCULATION & COMMON SPACE
- ALLOTTED COMMERCIAL
- SUPPORT COMMERCIAL
- MEETING SPACE
- ACCESSORY SPACES
Includes Residential and Resort Accessory Uses not specifically designated as "Club/Hotel".

- BUILDING NUMBER
- BUILDING AREA
NOTE: All areas are gross unless in [brackets] which are net, measured from inside face of perimeter walls.
- FINISH FLOOR ELEVATION
- LEVEL NUMBER

- PERIMETER OF BLDG. WHERE FINISH FLOOR > 48" BELOW FINISH GRADE
More than 50% of perimeter, therefore area classified as "Basement" and excluded from Gross Area
- PERIMETER OF BLDG. WHERE FINISH FLOOR > 48" BELOW FINISH GRADE:
Less than 50% of perimeter, or because of use, not classified as "Basement"

5d
LI (7213) 3,458 S.F.

LI (7213) 3,458 S.F.

LI (7213) 3,458 S.F.

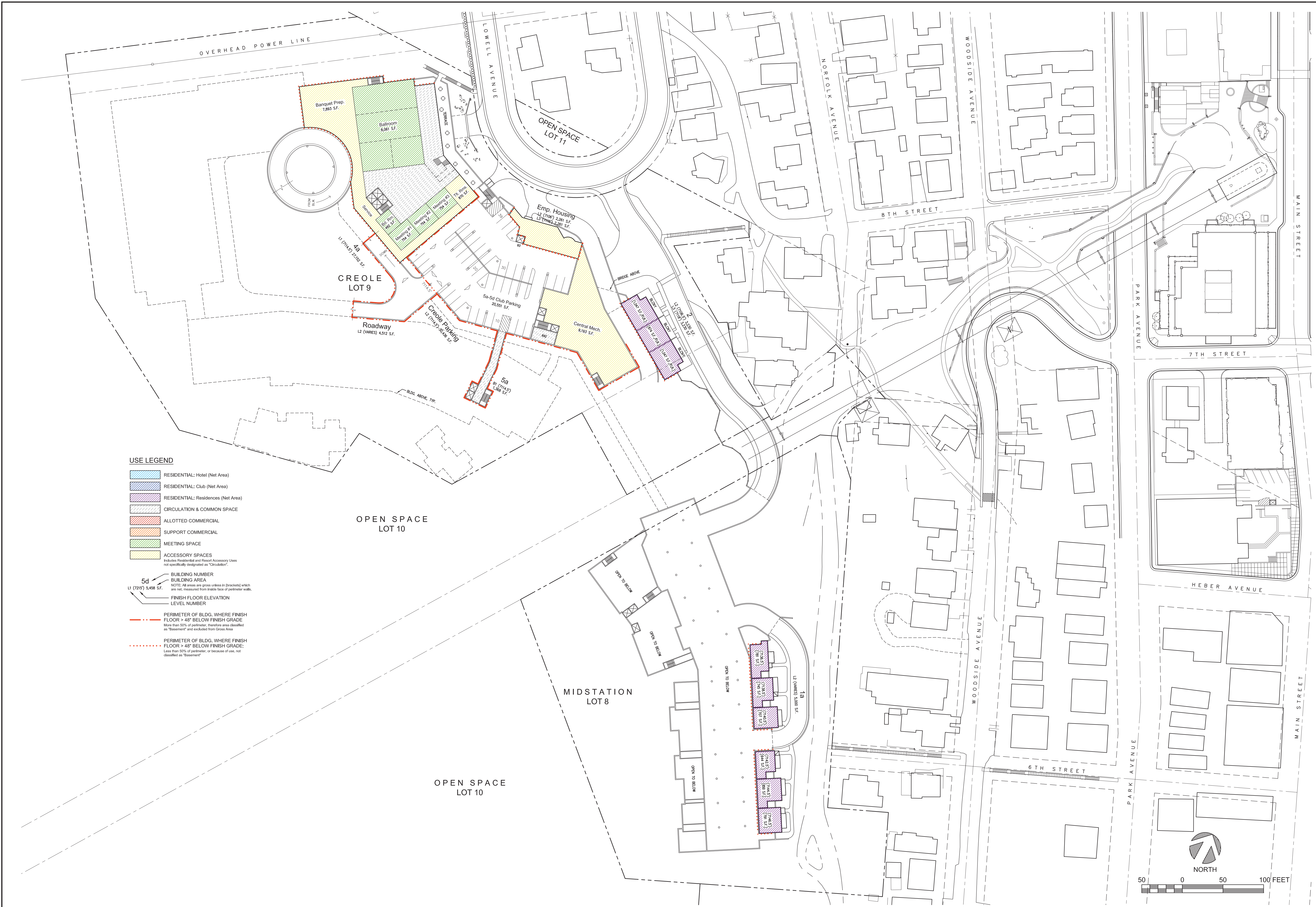
LI (7213) 3,458 S.F.

LI (7213) 3,458 S.F.

LI (7213) 3,458 S.F.

LI (7213) 3,458 S.F.

LI (7213) 3,458 S.F.

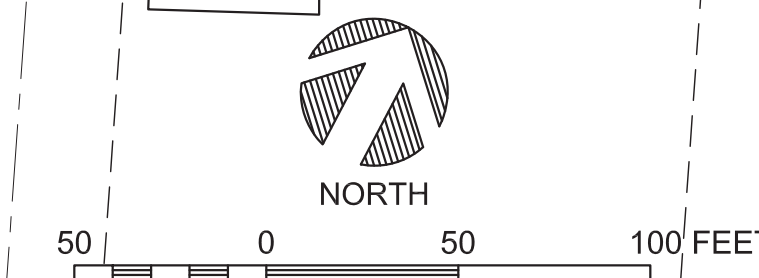


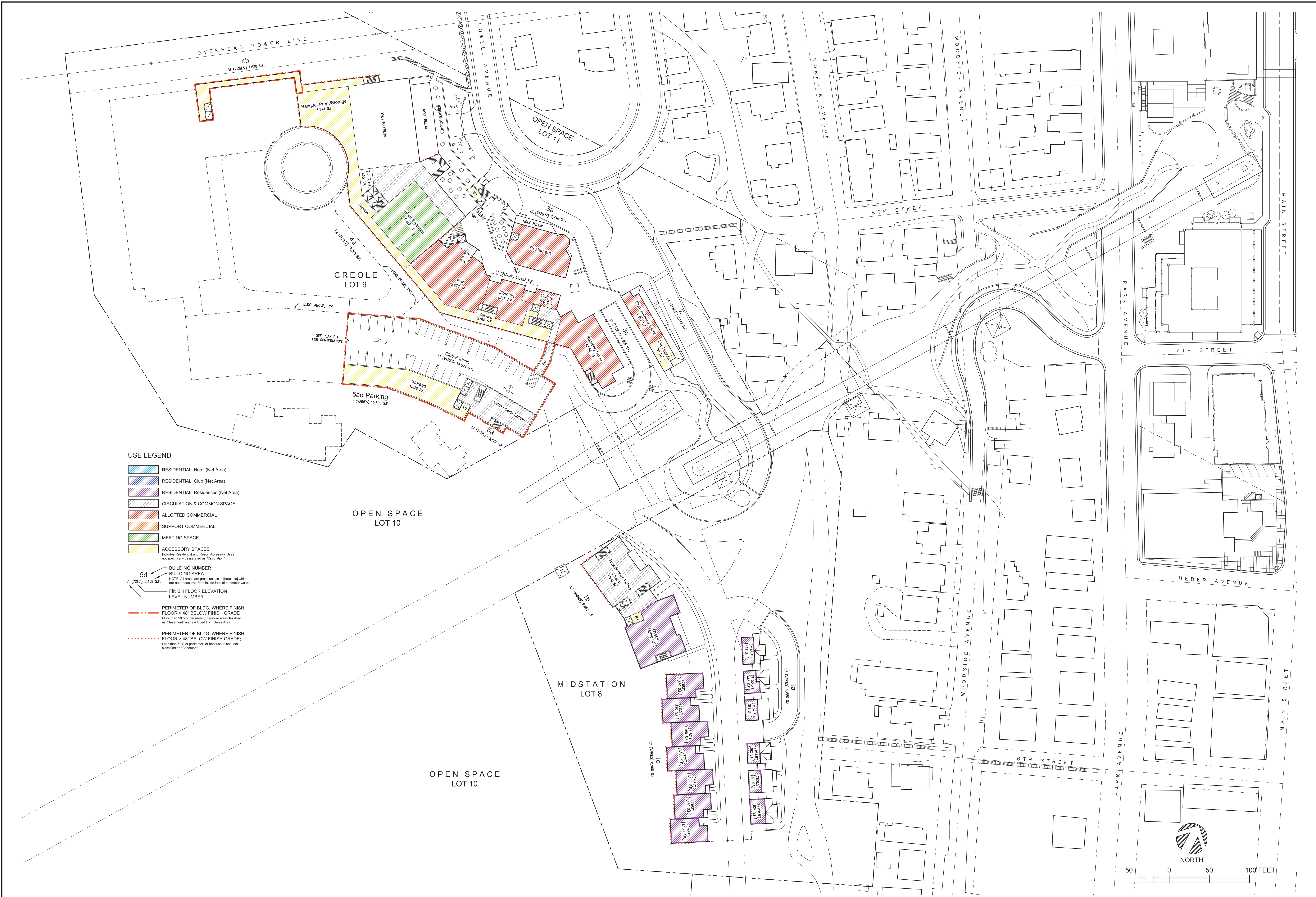
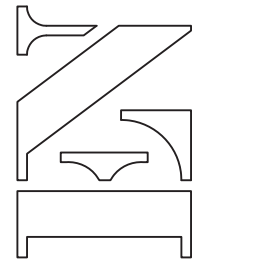
USE LEGEND

- RESIDENTIAL: Hotel (Net Area)
- RESIDENTIAL: Club (Net Area)
- RESIDENTIAL: Residences (Net Area)
- CIRCULATION & COMMON SPACE
- ALLOTTED COMMERCIAL
- SUPPORT COMMERCIAL
- MEETING SPACE
- ACCESSORY SPACES
Includes Residential and Resort Accessory Uses not specifically designated as "Childsitter".

5d BUILDING NUMBER
 BUILDING AREA
 NOTE: All areas are gross unless in [brackets] which are net, measured from inside face of perimeter walls.
 FINISH FLOOR ELEVATION
 LEVEL NUMBER

PERIMETER OF BLDG. WHERE FINISH FLOOR > 48" BELOW FINISH GRADE
 More than 50% of perimeter, therefore area classified as "Basement" and excluded from Gross Area
 PERIMETER OF BLDG. WHERE FINISH FLOOR > 48" BELOW FINISH GRADE:
 Less than 50% of perimeter, or because of use, not classified as "Basement"





USE LEGEND

- RESIDENTIAL: Hotel (Net Area)
- RESIDENTIAL: Club (Net Area)
- RESIDENTIAL: Residences (Net Area)
- CIRCULATION & COMMON SPACE
- ALLOTTED COMMERCIAL
- SUPPORT COMMERCIAL
- MEETING SPACE
- ACCESSORY SPACES
Includes Residential and Resort Accessory Uses not specifically designated as "Club/Resort".

- BUILDING NUMBER
- BUILDING AREA
NOTE: All areas are gross unless in [brackets] which are net, measured from inside face of perimeter walls.
- FINISH FLOOR ELEVATION
- LEVEL NUMBER
- PERIMETER OF BLDG. WHERE FINISH FLOOR > 48" BELOW FINISH GRADE
More than 50% of perimeter, therefore area classified as "Basement" and excluded from Gross Area
- PERIMETER OF BLDG. WHERE FINISH FLOOR > 48" BELOW FINISH GRADE:
Less than 50% of perimeter, or because of use, not classified as "Basement"

5d

LI (7128.5) 3,458 SF.

LI (7128.5) 3,458 SF.

LI (7128.5) 3,458 SF.

LI (7128.5) 3,458 SF.

LI (7128.5) 3,458 SF.

LI (7128.5) 3,458 SF.

LI (7128.5) 3,458 SF.

LI (7128.5) 3,458 SF.

LI (7128.5) 3,458 SF.

LI (7128.5) 3,458 SF.

LI (7128.5) 3,458 SF.

LI (7128.5) 3,458 SF.

LI (7128.5) 3,458 SF.

LI (7128.5) 3,458 SF.

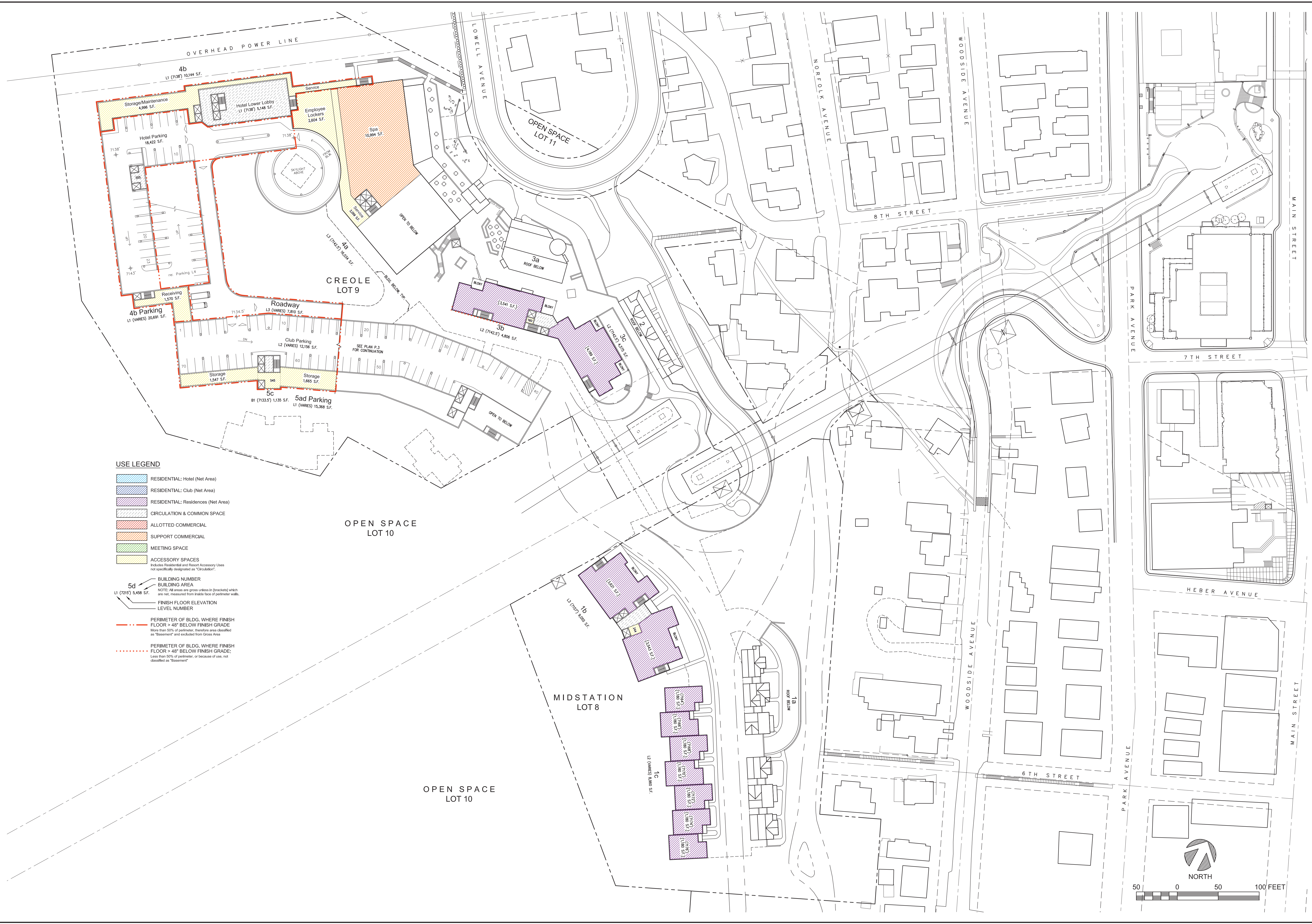
LI (7128.5) 3,458 SF.

LI (7128.5) 3,458 SF.

LI (7128.5) 3,458 SF.

LI (7128.5) 3,458 SF.

LI (7128.5) 3,458 SF.

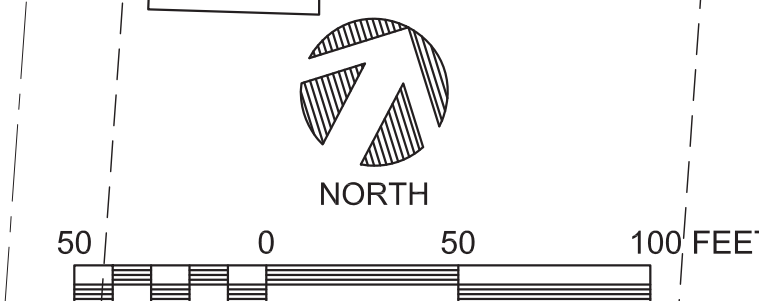


USE LEGEND

- RESIDENTIAL: Hotel (Net Area)
- RESIDENTIAL: Club (Net Area)
- RESIDENTIAL: Residences (Net Area)
- CIRCULATION & COMMON SPACE
- ALLOTTED COMMERCIAL
- SUPPORT COMMERCIAL
- MEETING SPACE
- ACCESSORY SPACES
Includes Residential and Resort Accessory Uses not specifically designated as "Club/Spa".

- BUILDING NUMBER
- BUILDING AREA
NOTE: All areas are gross unless in [brackets] which are net, measured from inside face of perimeter walls.
- FINISH FLOOR ELEVATION
- LEVEL NUMBER

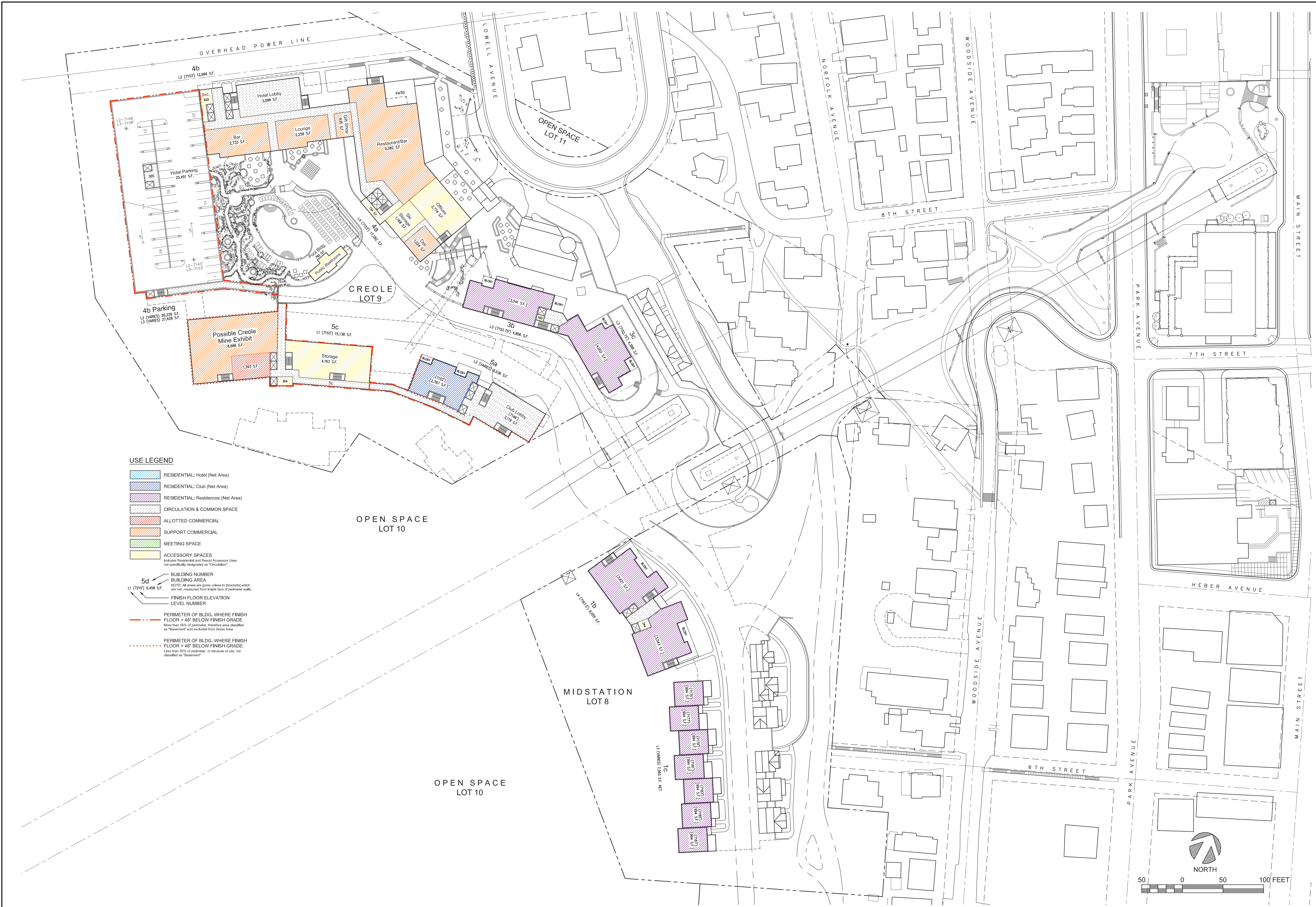
- PERIMETER OF BLDG. WHERE FINISH FLOOR > 48" BELOW FINISH GRADE
More than 50% of perimeter, therefore area classified as "Basement" and excluded from Gross Area
- PERIMETER OF BLDG. WHERE FINISH FLOOR > 48" BELOW FINISH GRADE:
Less than 50% of perimeter, or because of use, not classified as "Basement"





Level 5 Use Plan

Developed by
MPE, INC., PO Box 24229, Park City, UT 84060
eMail: info@treasureparkcity.com



USE LEGEND

- RESIDENTIAL: Hotel (Net Area)
- RESIDENTIAL: Club (Net Area)
- RESIDENTIAL: Residences (Net Area)
- CIRCULATION & COMMON SPACE
- ALLOTTED COMMERCIAL
- SUPPORT COMMERCIAL
- MEETING SPACE
- ACCESSORY SPACES
Includes Residential and Resort Accessory Uses not specifically designated as "Club/Resort".

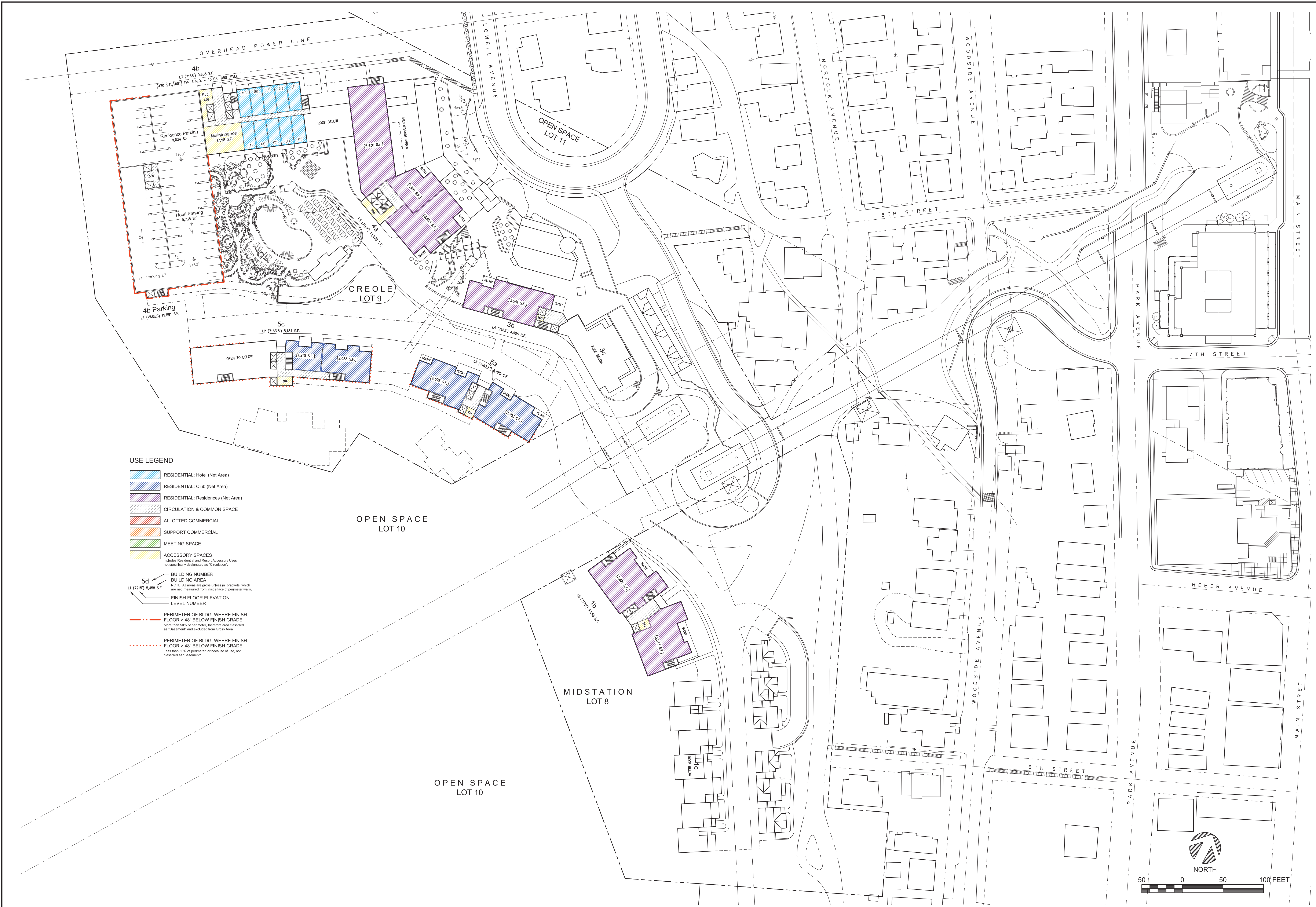
- BUILDING NUMBER
- BUILDING AREA
NOTE: All areas are gross unless in brackets which are net, measured from inside face of perimeter walls.
- FINISH FLOOR ELEVATION
- LEVEL NUMBER

- PERIMETER OF BLDG. WHERE FINISH FLOOR > 48" BELOW FINISH GRADE
More than 50% of perimeter, therefore area classified as "Basement" and excluded from Gross Area
- PERIMETER OF BLDG. WHERE FINISH FLOOR > 48" BELOW FINISH GRADE:
Less than 50% of perimeter, or because of use, not classified as "Basement"

5d

PERIMETER OF BLDG. WHERE FINISH FLOOR > 48" BELOW FINISH GRADE

PERIMETER OF BLDG. WHERE FINISH FLOOR > 48" BELOW FINISH GRADE

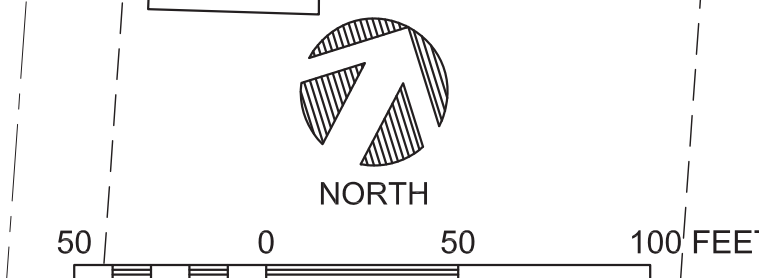


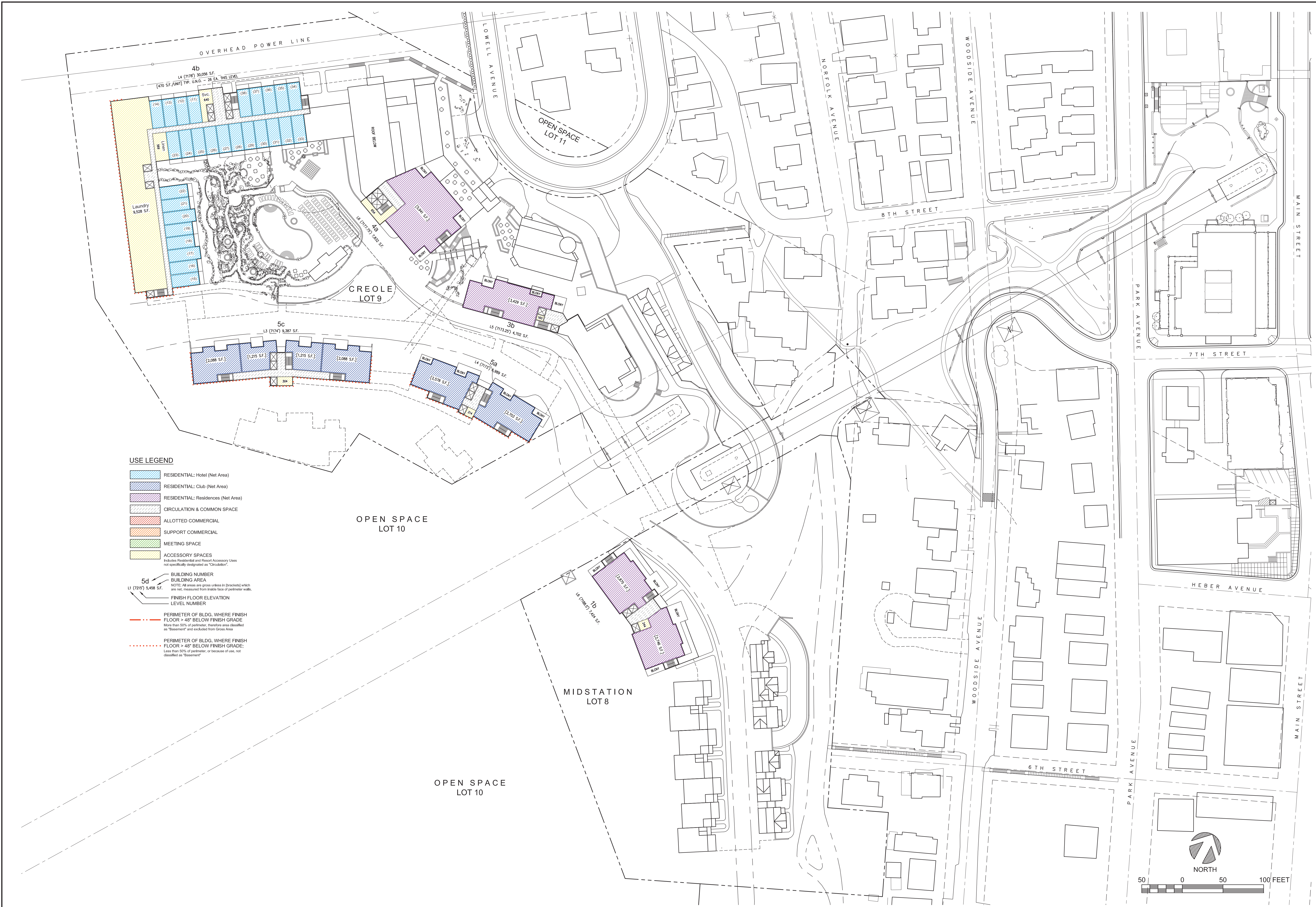
USE LEGEND

- RESIDENTIAL: Hotel (Net Area)
- RESIDENTIAL: Club (Net Area)
- RESIDENTIAL: Residences (Net Area)
- CIRCULATION & COMMON SPACE
- ALLOTTED COMMERCIAL
- SUPPORT COMMERCIAL
- MEETING SPACE
- ACCESSORY SPACES
Includes Residential and Resort Accessory Uses not specifically designated as "Club/Spa".

- BUILDING NUMBER
- BUILDING AREA
NOTE: All areas are gross unless in [brackets] which are net, measured from inside face of perimeter walls.
- FINISH FLOOR ELEVATION
- LEVEL NUMBER

- PERIMETER OF BLDG. WHERE FINISH FLOOR > 48" BELOW FINISH GRADE
More than 50% of perimeter, therefore area classified as "Basement" and excluded from Gross Area
- PERIMETER OF BLDG. WHERE FINISH FLOOR > 48" BELOW FINISH GRADE:
Less than 50% of perimeter, or because of use, not classified as "Basement"





USE LEGEND

- RESIDENTIAL: Hotel (Net Area)
- RESIDENTIAL: Club (Net Area)
- RESIDENTIAL: Residences (Net Area)
- CIRCULATION & COMMON SPACE
- ALLOTTED COMMERCIAL
- SUPPORT COMMERCIAL
- MEETING SPACE
- ACCESSORY SPACES

- BUILDING NUMBER
- BUILDING AREA
- FINISH FLOOR ELEVATION
- LEVEL NUMBER

- PERIMETER OF BLDG. WHERE FINISH FLOOR > 48" BELOW FINISH GRADE
More than 50% of perimeter, therefore area classified as "Basement" and excluded from Gross Area
- PERIMETER OF BLDG. WHERE FINISH FLOOR > 48" BELOW FINISH GRADE:
Less than 50% of perimeter, or because of use, not classified as "Basement"

5d
L1 (7125) 5,458 S.F.
NOTE: All areas are gross unless in [brackets] which are net, measured from inside face of perimeter walls.

PERIMETER OF BLDG. WHERE FINISH FLOOR > 48" BELOW FINISH GRADE:
More than 50% of perimeter, therefore area classified as "Basement" and excluded from Gross Area

PERIMETER OF BLDG. WHERE FINISH FLOOR > 48" BELOW FINISH GRADE:
Less than 50% of perimeter, or because of use, not classified as "Basement"

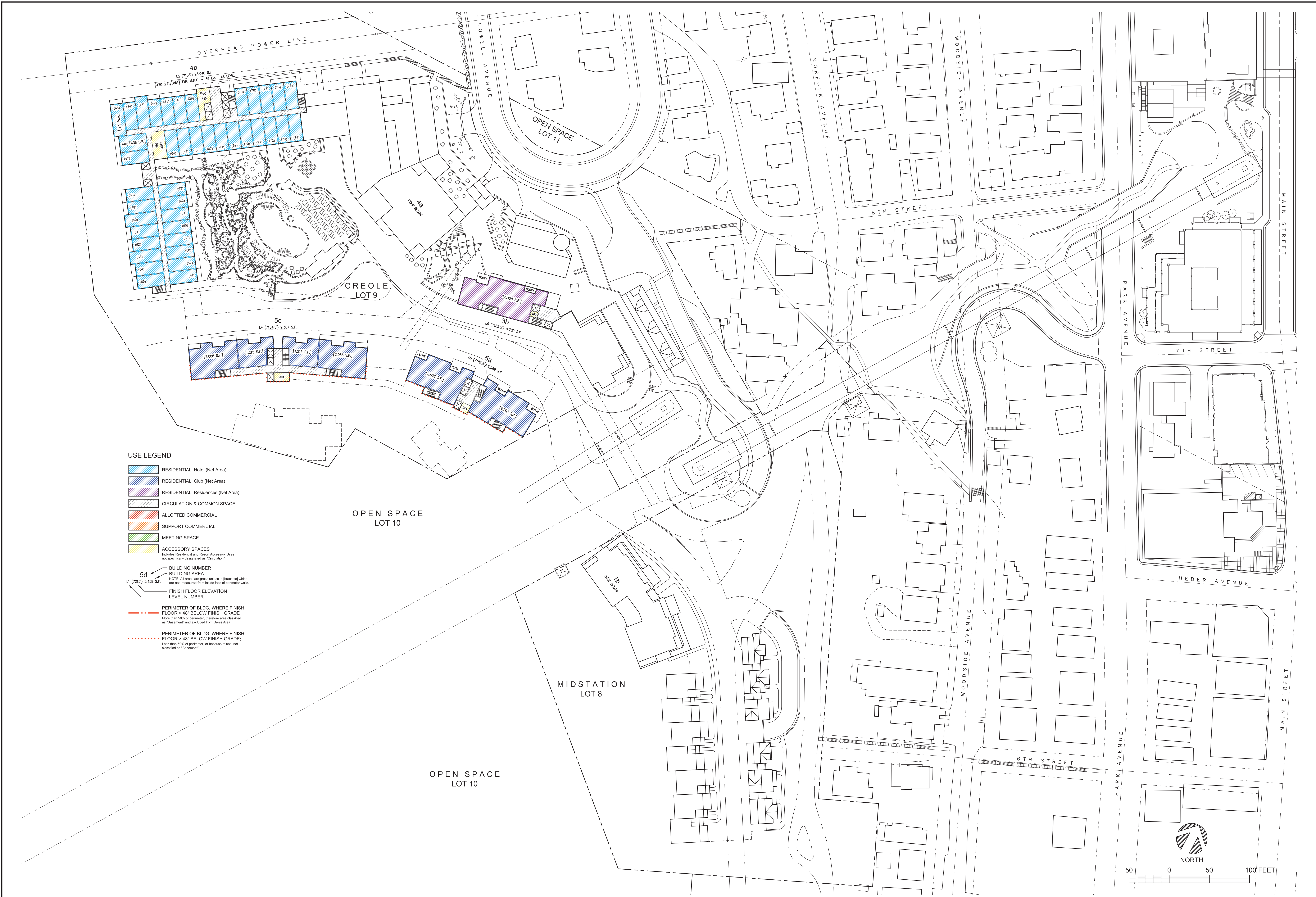
5d
L1 (7125) 5,458 S.F.
NOTE: All areas are gross unless in [brackets] which are net, measured from inside face of perimeter walls.

PERIMETER OF BLDG. WHERE FINISH FLOOR > 48" BELOW FINISH GRADE:
More than 50% of perimeter, therefore area classified as "Basement" and excluded from Gross Area

PERIMETER OF BLDG. WHERE FINISH FLOOR > 48" BELOW FINISH GRADE:
Less than 50% of perimeter, or because of use, not classified as "Basement"

PERIMETER OF BLDG. WHERE FINISH FLOOR > 48" BELOW FINISH GRADE:
More than 50% of perimeter, therefore area classified as "Basement" and excluded from Gross Area

PERIMETER OF BLDG. WHERE FINISH FLOOR > 48" BELOW FINISH GRADE:
Less than 50% of perimeter, or because of use, not classified as "Basement"

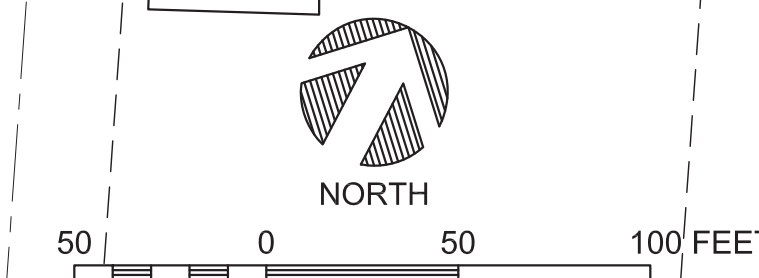


USE LEGEND

- RESIDENTIAL: Hotel (Net Area)
- RESIDENTIAL: Club (Net Area)
- RESIDENTIAL: Residences (Net Area)
- CIRCULATION & COMMON SPACE
- ALLOTED COMMERCIAL
- SUPPORT COMMERCIAL
- MEETING SPACE
- ACCESSORY SPACES

- BUILDING NUMBER
- BUILDING AREA
- FINISH FLOOR ELEVATION
- LEVEL NUMBER

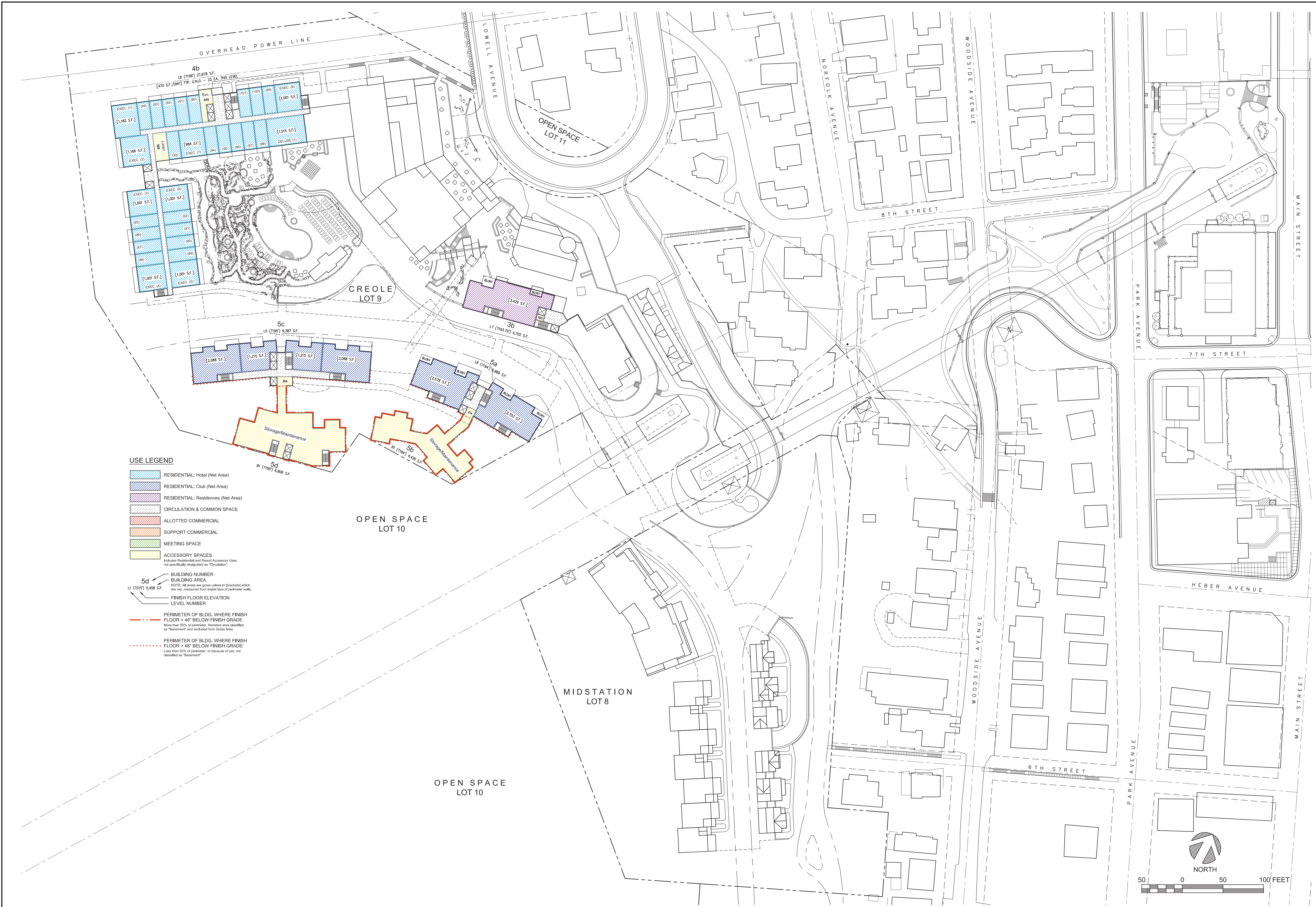
- PERIMETER OF BLDG. WHERE FINISH FLOOR > 48" BELOW FINISH GRADE
More than 50% of perimeter, therefore area classified as "Basement" and excluded from Gross Area
- PERIMETER OF BLDG. WHERE FINISH FLOOR > 48" BELOW FINISH GRADE:
Less than 50% of perimeter, or because of use, not classified as "Basement"





Level 9 Use Plan

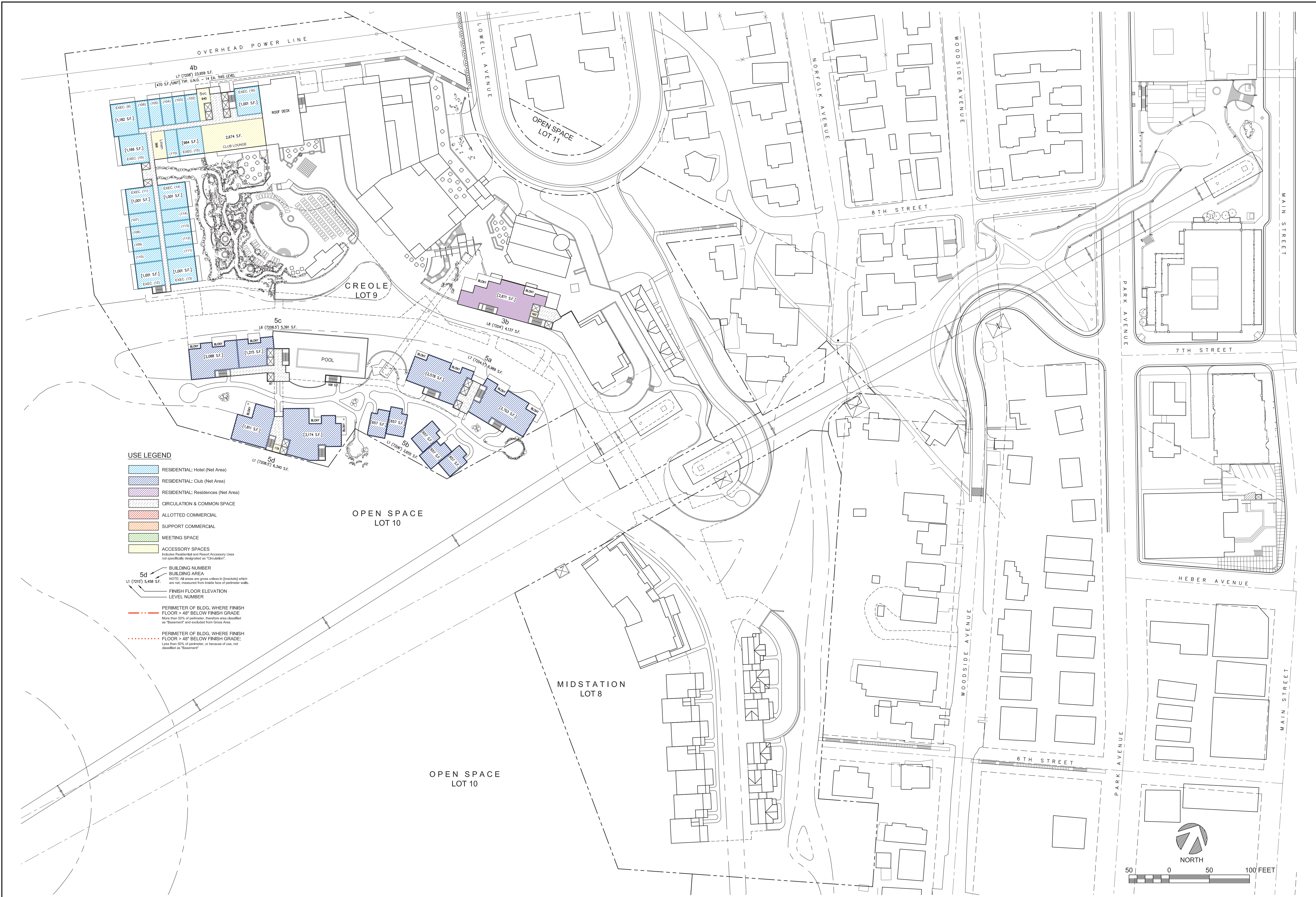
Developed by
MPE, INC., PO Box 24229, Park City, UT 84060
eMail: info@treasureparkcity.com



USE LEGEND

- RESIDENTIAL: Hotel (Net Area)
- RESIDENTIAL: Club (Net Area)
- RESIDENTIAL: Residences (Net Area)
- CIRCULATION & COMMON SPACE
- ALLOTTED COMMERCIAL
- SUPPORT COMMERCIAL
- MEETING SPACE
- ACCESSORY SPACES
Includes Residential and Resort Accessory Uses not specifically designated as "Club/Hotel".

- BUILDING NUMBER
- BUILDING AREA
NOTE: All areas are gross unless in brackets which are net, measured from inside face of perimeter walls.
- FINISH FLOOR ELEVATION
- LEVEL NUMBER
- PERIMETER OF BLDG. WHERE FINISH FLOOR > 48" BELOW FINISH GRADE
More than 50% of perimeter, therefore area classified as "Basement" and excluded from Gross Area
- PERIMETER OF BLDG. WHERE FINISH FLOOR > 48" BELOW FINISH GRADE:
Less than 50% of perimeter, or because of use, not classified as "Basement"

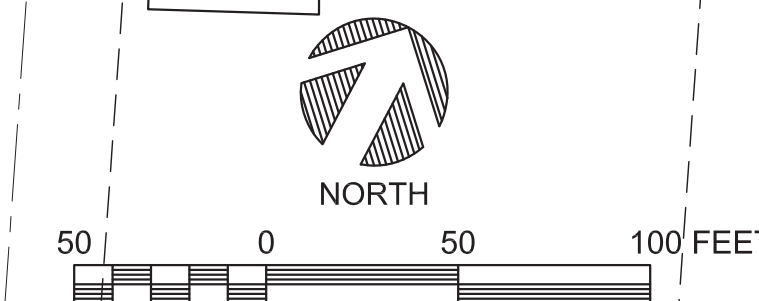


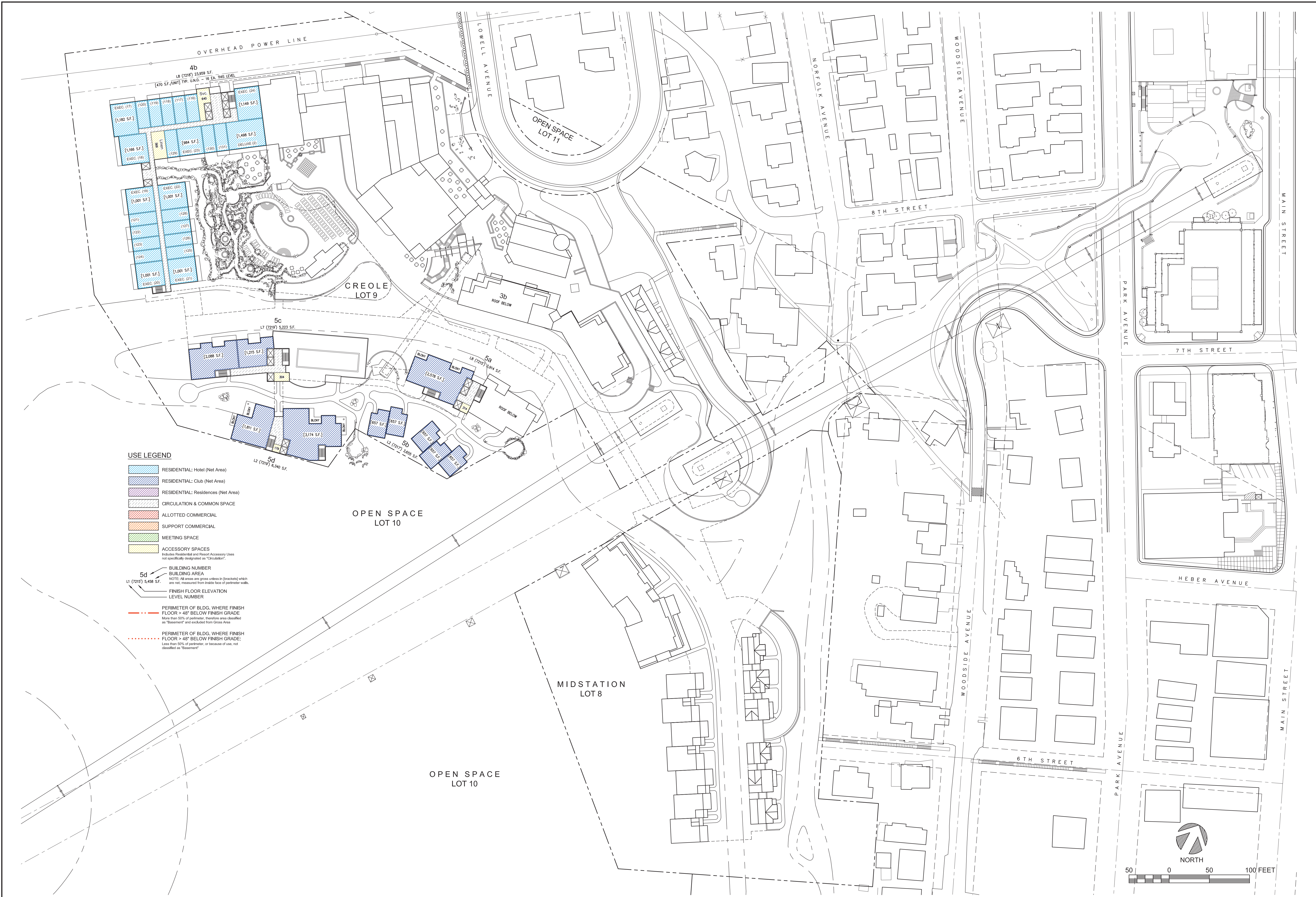
USE LEGEND

- RESIDENTIAL: Hotel (Net Area)
- RESIDENTIAL: Club (Net Area)
- RESIDENTIAL: Residences (Net Area)
- CIRCULATION & COMMON SPACE
- ALLOTED COMMERCIAL
- SUPPORT COMMERCIAL
- MEETING SPACE
- ACCESSORY SPACES
Includes Residential and Resort Accessory Uses not specifically designated as "Club/Spa".

- BUILDING NUMBER
- BUILDING AREA
NOTE: All areas are gross unless in brackets which are net, measured from inside face of perimeter walls.
- FINISH FLOOR ELEVATION
- LEVEL NUMBER

- PERIMETER OF BLDG. WHERE FINISH FLOOR > 48" BELOW FINISH GRADE
More than 50% of perimeter, therefore area classified as "Basement" and excluded from Gross Area
- PERIMETER OF BLDG. WHERE FINISH FLOOR > 48" BELOW FINISH GRADE:
Less than 50% of perimeter, or because of use, not classified as "Basement"



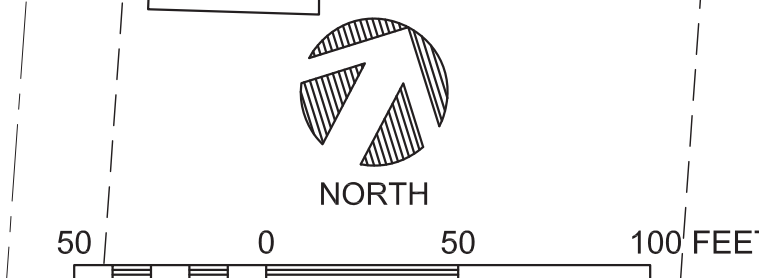


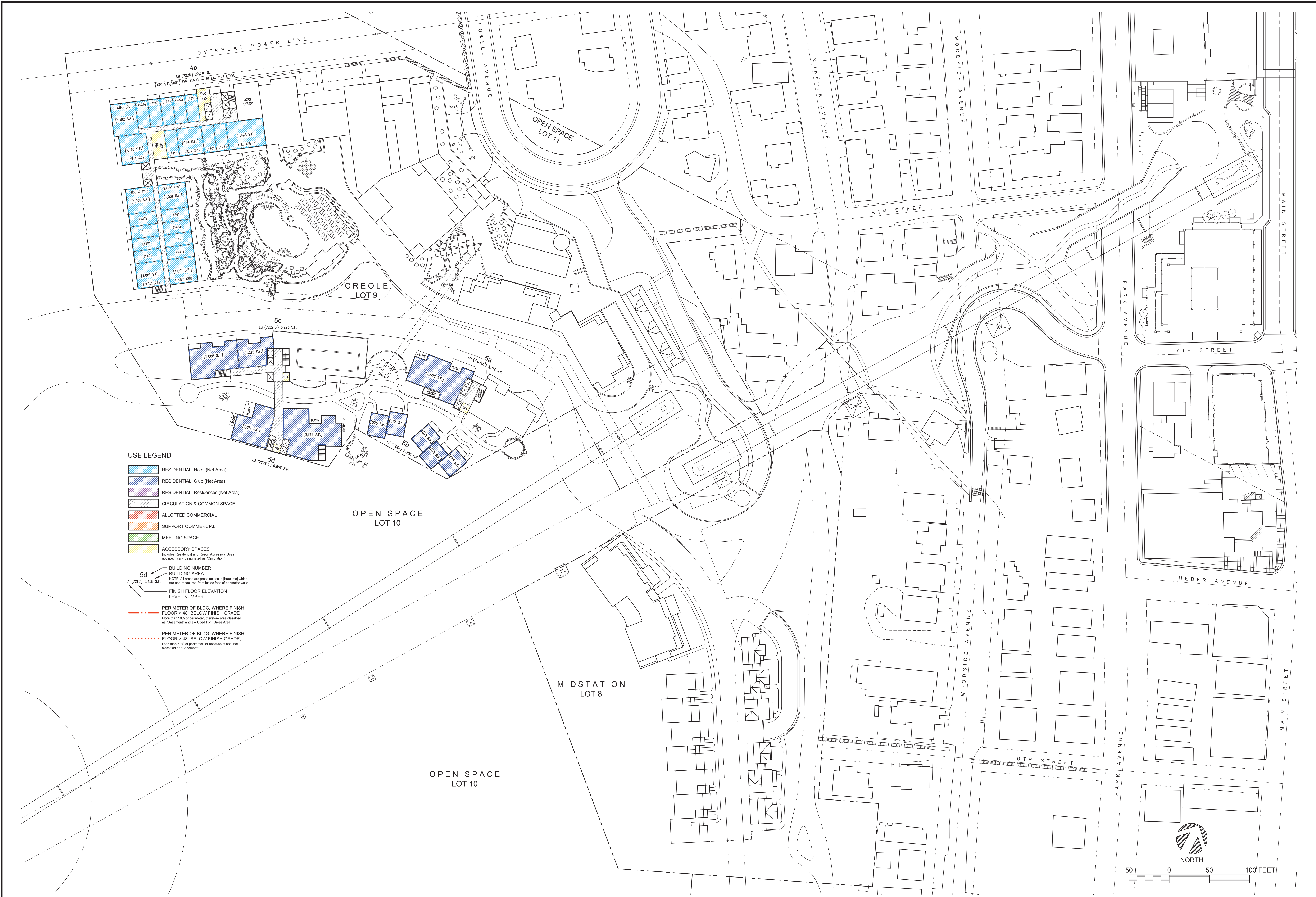
USE LEGEND

- RESIDENTIAL: Hotel (Net Area)
- RESIDENTIAL: Club (Net Area)
- RESIDENTIAL: Residences (Net Area)
- CIRCULATION & COMMON SPACE
- ALLOTED COMMERCIAL
- SUPPORT COMMERCIAL
- MEETING SPACE
- ACCESSORY SPACES
Includes Residential and Resort Accessory Uses not specifically designated as "Club/Resort".

- BUILDING NUMBER
- BUILDING AREA
NOTE: All areas are gross unless in [brackets] which are net, measured from inside face of perimeter walls.
- FINISH FLOOR ELEVATION
- LEVEL NUMBER

- PERIMETER OF BLDG. WHERE FINISH FLOOR > 48" BELOW FINISH GRADE
More than 50% of perimeter, therefore area classified as "Basement" and excluded from Gross Area
- PERIMETER OF BLDG. WHERE FINISH FLOOR > 48" BELOW FINISH GRADE:
Less than 50% of perimeter, or because of use, not classified as "Basement"





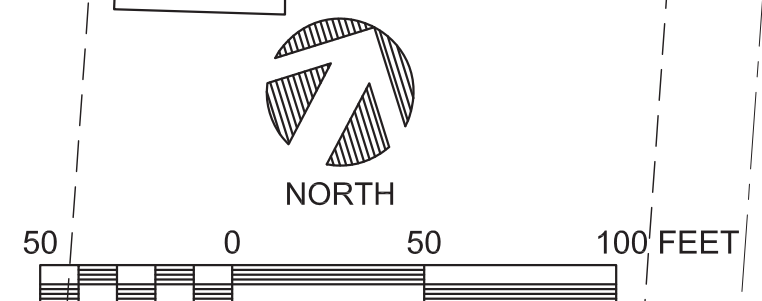
USE LEGEND

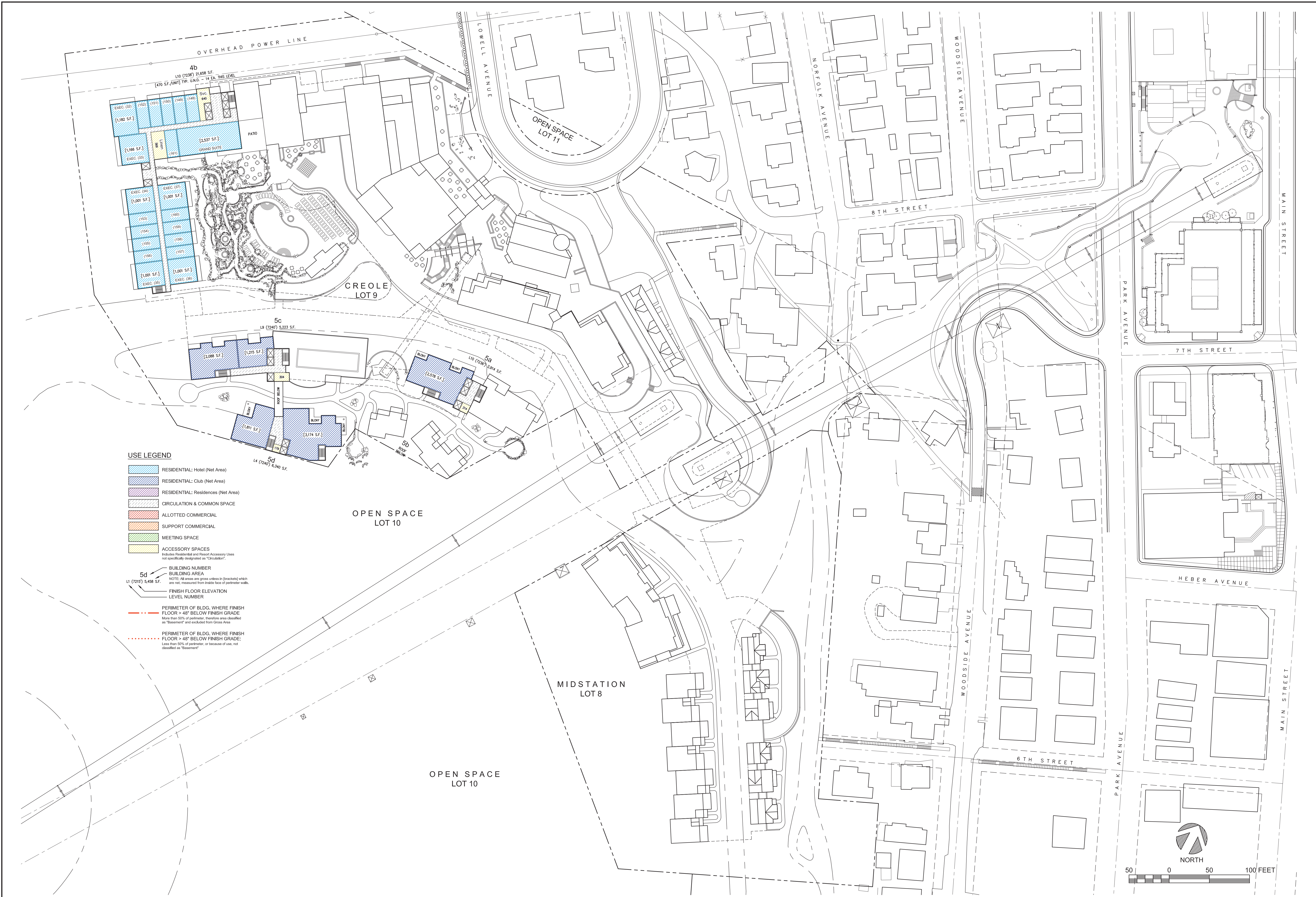
- RESIDENTIAL: Hotel (Net Area)
- RESIDENTIAL: Club (Net Area)
- RESIDENTIAL: Residences (Net Area)
- CIRCULATION & COMMON SPACE
- ALLOTED COMMERCIAL
- SUPPORT COMMERCIAL
- MEETING SPACE
- ACCESSORY SPACES

5d BUILDING NUMBER
 L1 (7215) 5,458 S.F.
 FINISH FLOOR ELEVATION
 LEVEL NUMBER

PERIMETER OF BLDG. WHERE FINISH FLOOR > 48" BELOW FINISH GRADE
 More than 50% of perimeter, therefore area classified as "Basement" and excluded from Gross Area

PERIMETER OF BLDG. WHERE FINISH FLOOR > 48" BELOW FINISH GRADE:
 Less than 50% of perimeter, or because of use, not classified as "Basement"



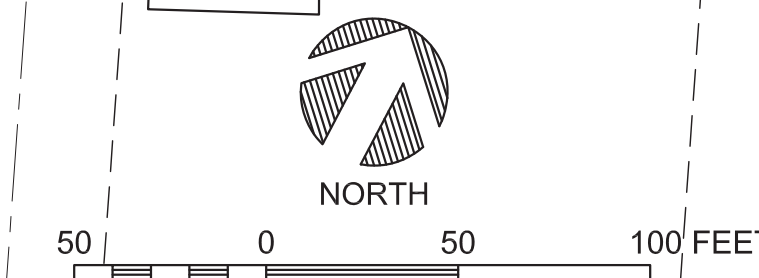


USE LEGEND

- RESIDENTIAL: Hotel (Net Area)
- RESIDENTIAL: Club (Net Area)
- RESIDENTIAL: Residences (Net Area)
- CIRCULATION & COMMON SPACE
- ALLOTED COMMERCIAL
- SUPPORT COMMERCIAL
- MEETING SPACE
- ACCESSORY SPACES
Includes Residential and Resort Accessory Uses not specifically designated as "Chickadee".

- BUILDING NUMBER
- BUILDING AREA
NOTE: All areas are gross unless in [brackets] which are net, measured from inside face of perimeter walls.
- FINISH FLOOR ELEVATION
- LEVEL NUMBER

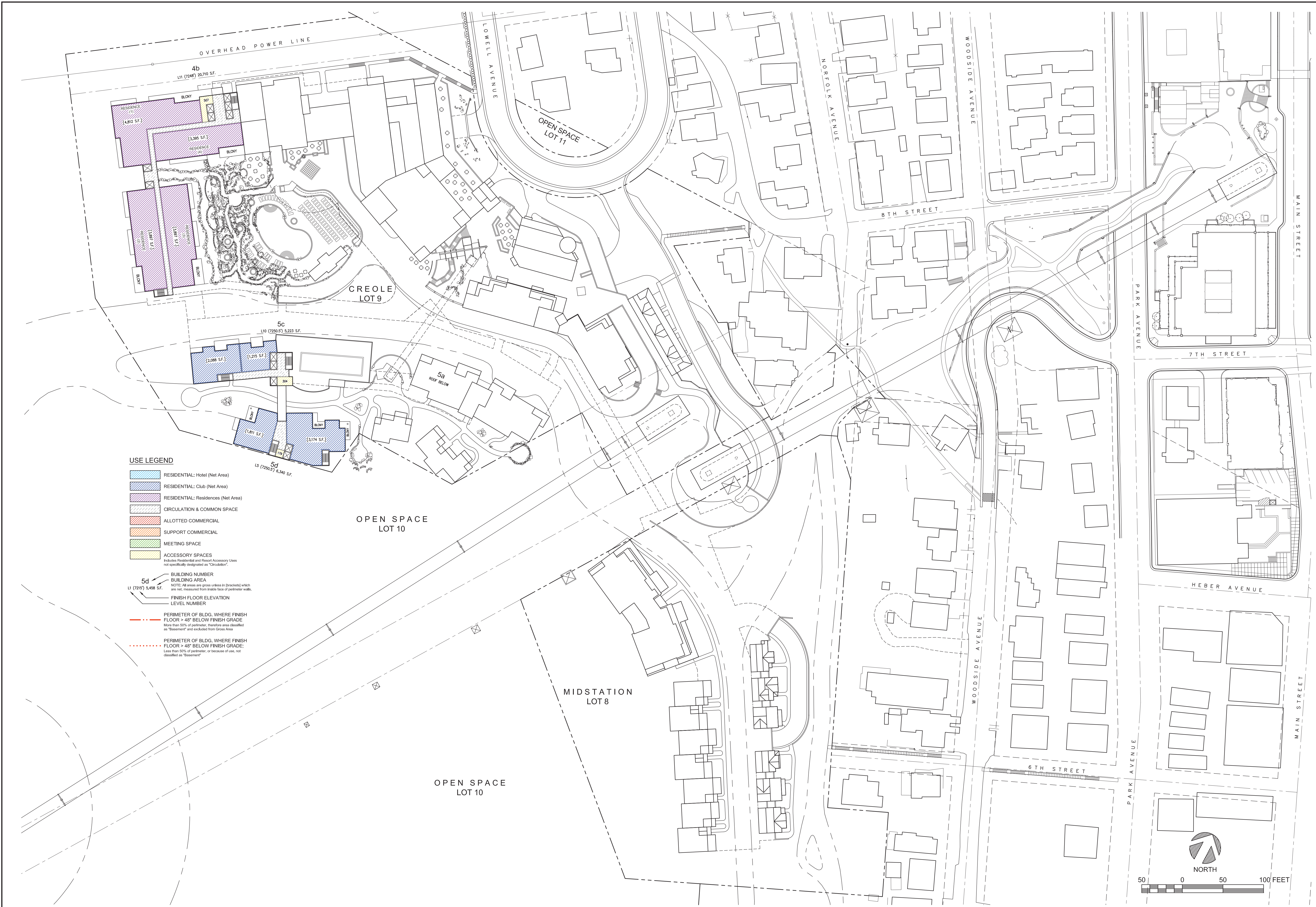
- PERIMETER OF BLDG. WHERE FINISH FLOOR > 48" BELOW FINISH GRADE
More than 50% of perimeter, therefore area classified as "Basement" and excluded from Gross Area
- PERIMETER OF BLDG. WHERE FINISH FLOOR > 48" BELOW FINISH GRADE:
Less than 50% of perimeter, or because of use, not classified as "Basement"





Level 14 Use Plan

Developed by
MPE, INC., PO Box 2429, Park City, UT 84060
eMail: info@treasureparkcity.com



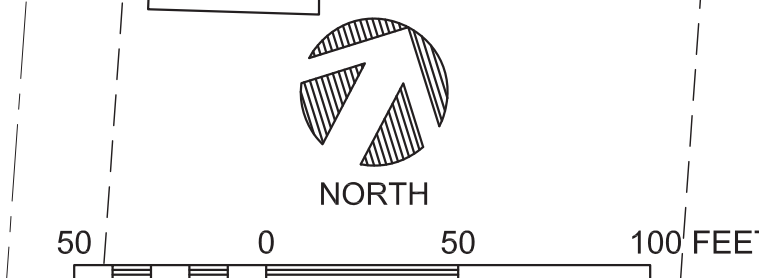
USE LEGEND

- RESIDENTIAL: Hotel (Net Area)
- RESIDENTIAL: Club (Net Area)
- RESIDENTIAL: Residences (Net Area)
- CIRCULATION & COMMON SPACE
- ALLOTED COMMERCIAL
- SUPPORT COMMERCIAL
- MEETING SPACE
- ACCESSORY SPACES
Includes Residential and Resort Accessory Uses not specifically designated as "Chickadee".

- BUILDING NUMBER
- BUILDING AREA
NOTE: All areas are gross unless in [brackets] which are net, measured from inside face of perimeter walls.
- FINISH FLOOR ELEVATION
- LEVEL NUMBER

PERIMETER OF BLDG. WHERE FINISH FLOOR > 48" BELOW FINISH GRADE
More than 50% of perimeter, therefore area classified as "Basement" and excluded from Gross Area

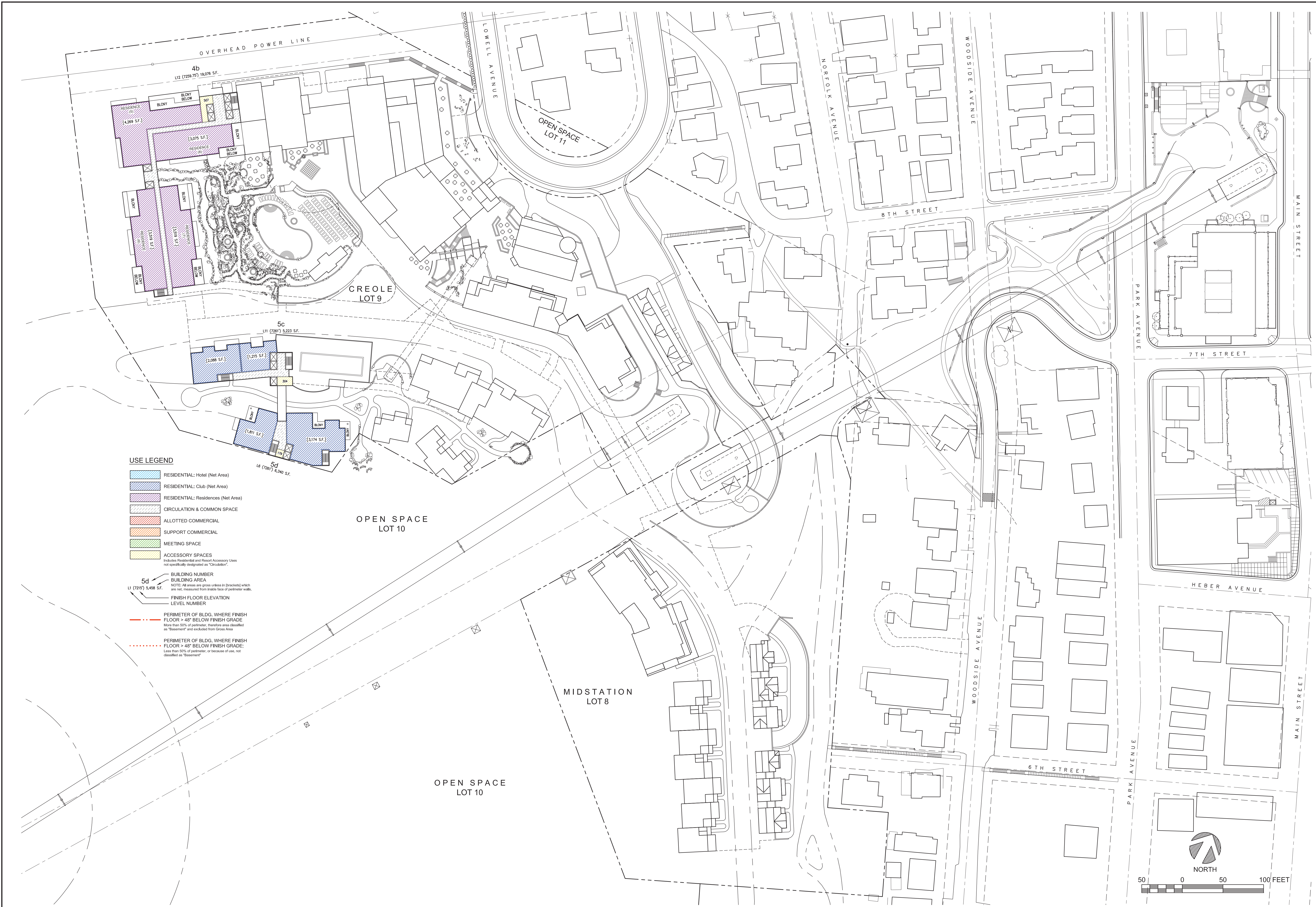
PERIMETER OF BLDG. WHERE FINISH FLOOR > 48" BELOW FINISH GRADE:
Less than 50% of perimeter, or because of use, not classified as "Basement"





Level 15 Use Plan

Developed by
MPE, INC., PO Box 24229, Park City, UT 84060
eMail: info@treasureparkcity.com



USE LEGEND

- RESIDENTIAL: Hotel (Net Area)
- RESIDENTIAL: Club (Net Area)
- RESIDENTIAL: Residences (Net Area)
- CIRCULATION & COMMON SPACE
- ALLOTED COMMERCIAL
- SUPPORT COMMERCIAL
- MEETING SPACE
- ACCESSORY SPACES
Includes Residential and Resort Accessory Uses not specifically designated as "Club/Spa".

- BUILDING NUMBER
- BUILDING AREA
NOTE: All areas are gross unless in [brackets] which are net, measured from inside face of perimeter walls.
- FINISH FLOOR ELEVATION
- LEVEL NUMBER

- PERIMETER OF BLDG. WHERE FINISH FLOOR > 48" BELOW FINISH GRADE
More than 50% of perimeter, therefore area classified as "Basement" and excluded from Gross Area
- PERIMETER OF BLDG. WHERE FINISH FLOOR > 48" BELOW FINISH GRADE:
Less than 50% of perimeter, or because of use, not classified as "Basement"

- BUILDING NUMBER
- BUILDING AREA
- FINISH FLOOR ELEVATION
- LEVEL NUMBER

- PERIMETER OF BLDG. WHERE FINISH FLOOR > 48" BELOW FINISH GRADE
More than 50% of perimeter, therefore area classified as "Basement" and excluded from Gross Area
- PERIMETER OF BLDG. WHERE FINISH FLOOR > 48" BELOW FINISH GRADE:
Less than 50% of perimeter, or because of use, not classified as "Basement"

