

## Stacked Boulders

Stacked boulder retaining wall systems will be placed so as to appear to be natural rock. Accordingly boulders will be positioned to reflect the pattern of large random boulders and clusters of boulders that may have occurred naturally within the landscape. Boulders will be from the area.



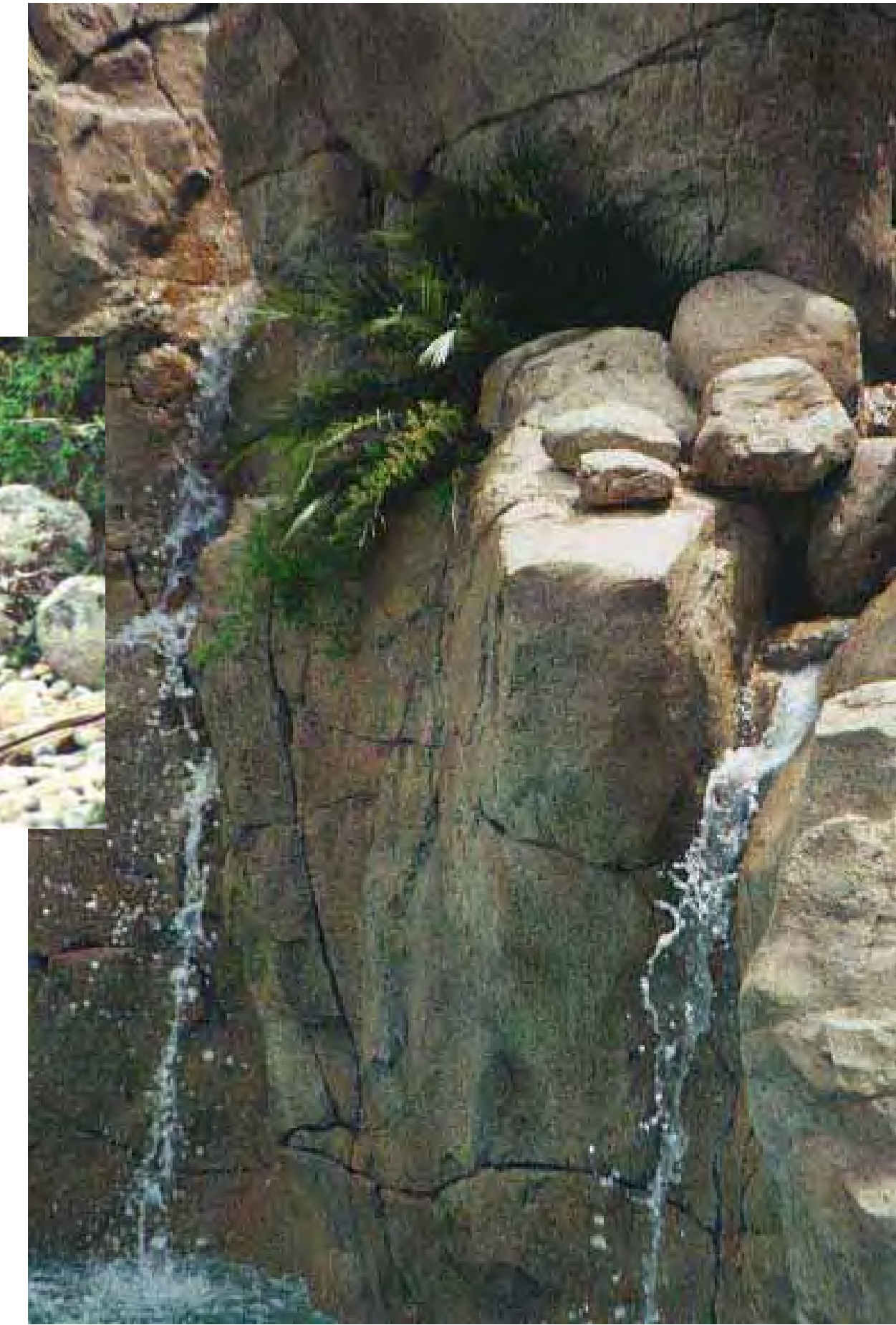
## Natural Rock Outcrops

Outcrops in the Treasure project will be created in the field, based on the integrity of existing, underlying rock. Once exposed, the outcrops will be weathered to add a look of maturity to the landscape. The outcrops will be enhanced with plant material, water features, and natural boulders.



## Water Features

Natural run-off, and self-contained filtered, heated, and treated systems will be utilized for trickles, and small waterfalls with a series of small pools to enhance the cliffscape environment.



## Simulated Outcrops

Simulated outcrops may be utilized in areas where there are no naturally occurring outcrops, where the existing rock is structurally unsound, or where rock is needed in a strictly defined space (ie pool/spa/waterslide area). The constructed outcrops will be enhanced with plant material, water features, and boulders.

REVISIONS:

210 Stonepine Highway  
Mill Valley, CA 94041  
Ph: 415-381-5800  
Fax: 415-381-5801  
www.integratedids.com

**ids**  
INTEGRATED  
DESIGN  
ASSOCIATES

SITE PLANNING  
LANDSCAPE ARCHITECTURE  
RESORT DESIGN  
2975 E Fern Avenue, #102  
Tremé, LA 70070  
Ph: 504-298-9267  
Fax: 504-298-9267

**PERKINS DESIGN ASSOCIATES**

**MPE**  
INCORPORATED

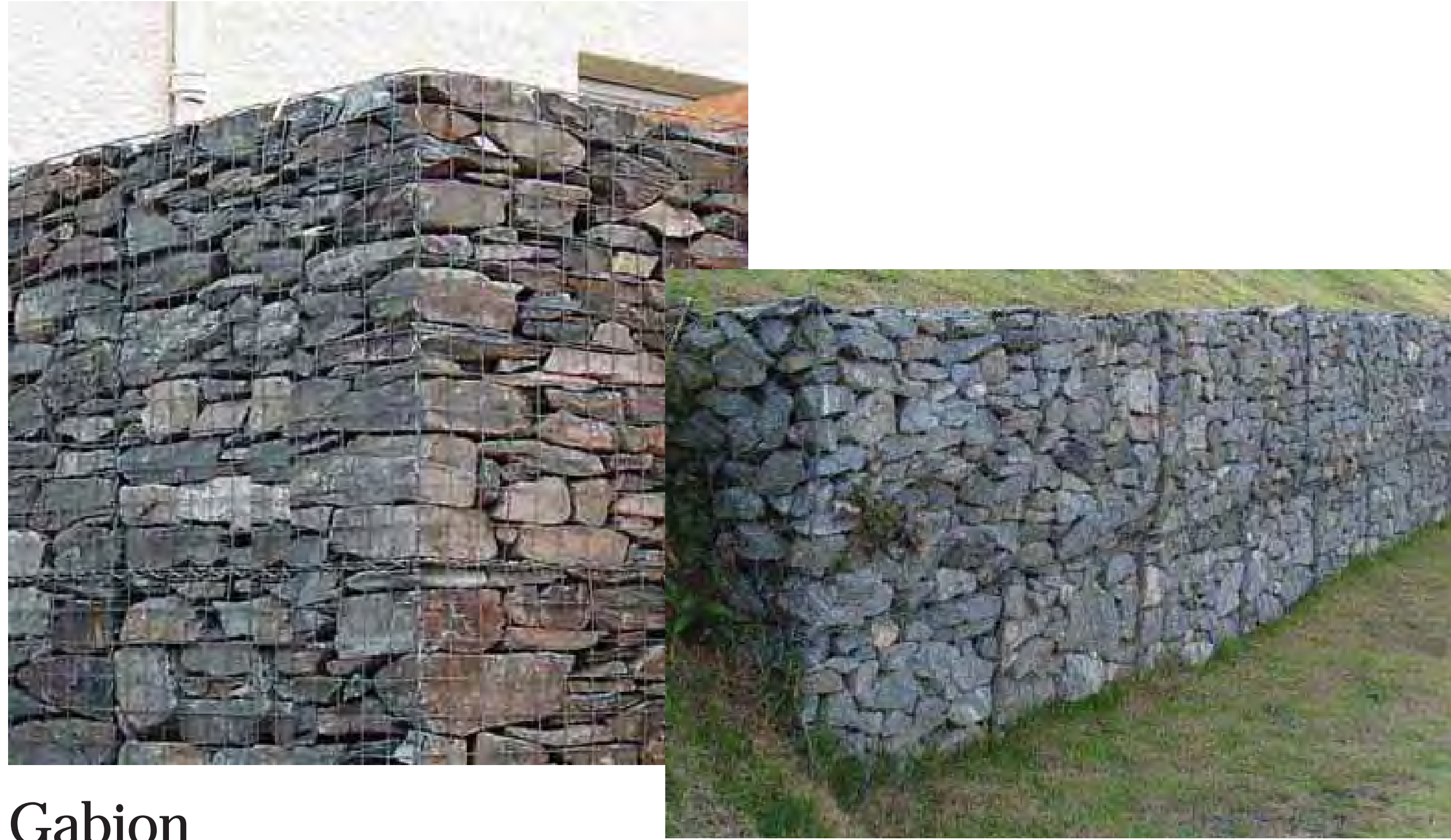
Cliffscapes  
Developed by  
MPE, INC., PO Box 2429, Park City, UT 84060  
eMail: info@treasureparkcity.com

**treasure**  
PARK CITY, UTAH

SHEET NUMBER

**V-17**

6/12/2008



## Gabion

Gabions, or cages of competent site stone, will be used to provide retention, combining the geometric look of the cage system, with the natural feel of stone. These systems can be vertical or stepped and engineered for a variety of heights.



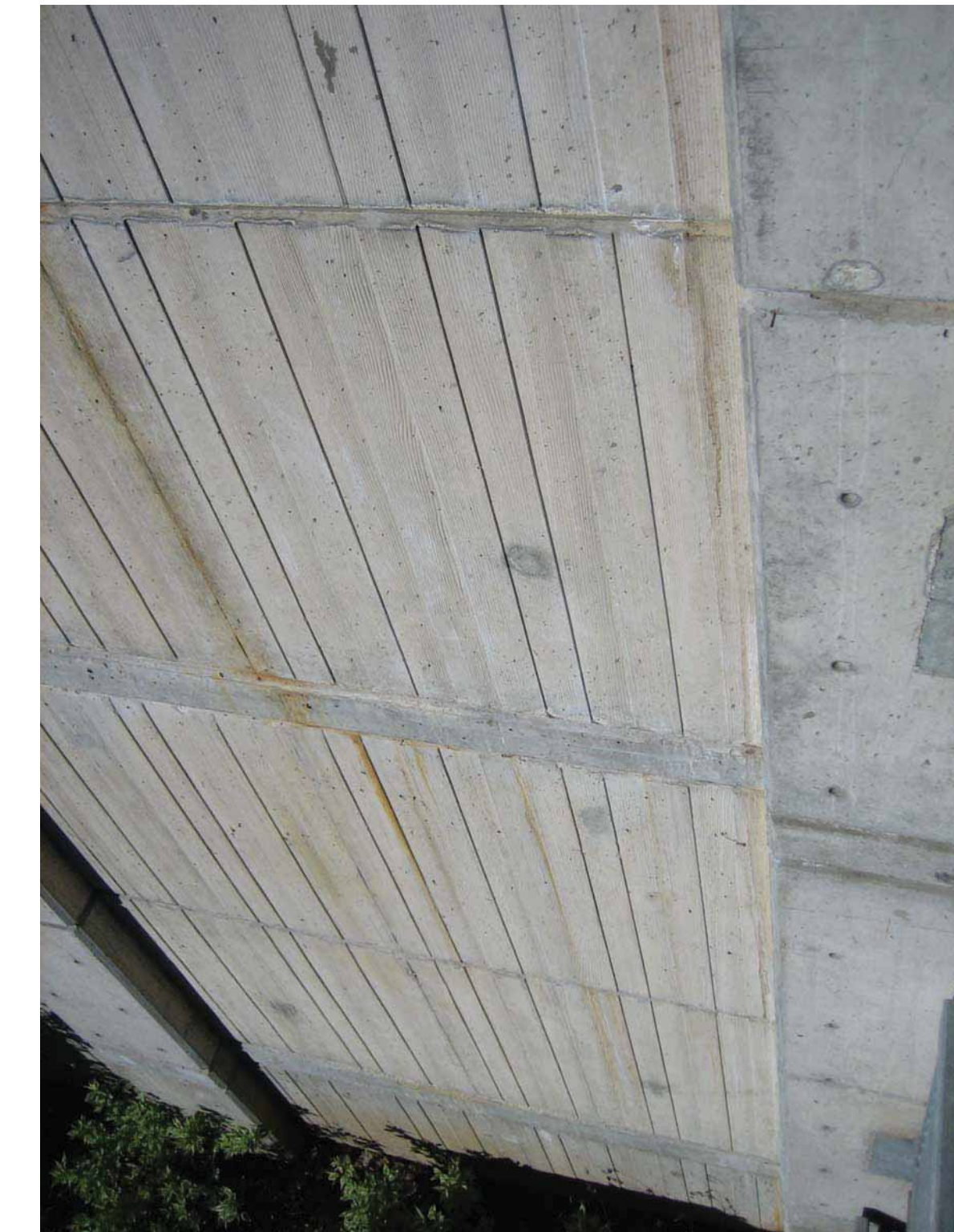
## Modular Block

As much as practical, retaining systems will be or will appear to be natural rock. In some areas, site constraints will prohibit the use of those materials. Modular block walls may be used in areas where there is limited space, large planting terraces are desired, or where a large wall is needed and a textured surface is preferred. Modular block walls will match other materials in the Project with regards to color and texture. Freestanding walls shall incorporate natural elements that blend with the site.



## I-Beam

I-Beam and wood retaining systems will be used in areas of significant grade change or tight areas where cliffscapes and other walls are not feasible. These walls will continue the mining theme and connect the project with similar styles in the surrounding areas of Park City.



## Board Formed Concrete

Iron stained board formed concrete walls will be utilized in areas with significant grade change where cliffscapes, stacked rock, or modular block walls are not feasible.

REVISIONS:

210 Stonepine Highway  
Mill Valley, CA 94041  
Ph: 415-381-5800  
Fax: 415-381-5801  
www.integrated-ids.com

**ids**  
INTEGRATED  
DESIGN  
ASSOCIATES

SITE PLANNING  
LANDSCAPE ARCHITECTURE  
RESORT DESIGN  
2975 E Fern Avenue, #102  
Tremé, LA 70070  
Ph: 504-298-2822  
Fax: 504-298-2767

**PERKINS  
DESIGN  
ASSOCIATES**

**MPE**  
INCORPORATED

Retaining Systems  
Developed by  
MPE, INC., PO Box 2429, Park City, UT 84060  
eMail: info@treasureparkcity.com

**treasure**  
PARK CITY, UTAH

SHEET NUMBER

**V-18**

6/12/2008



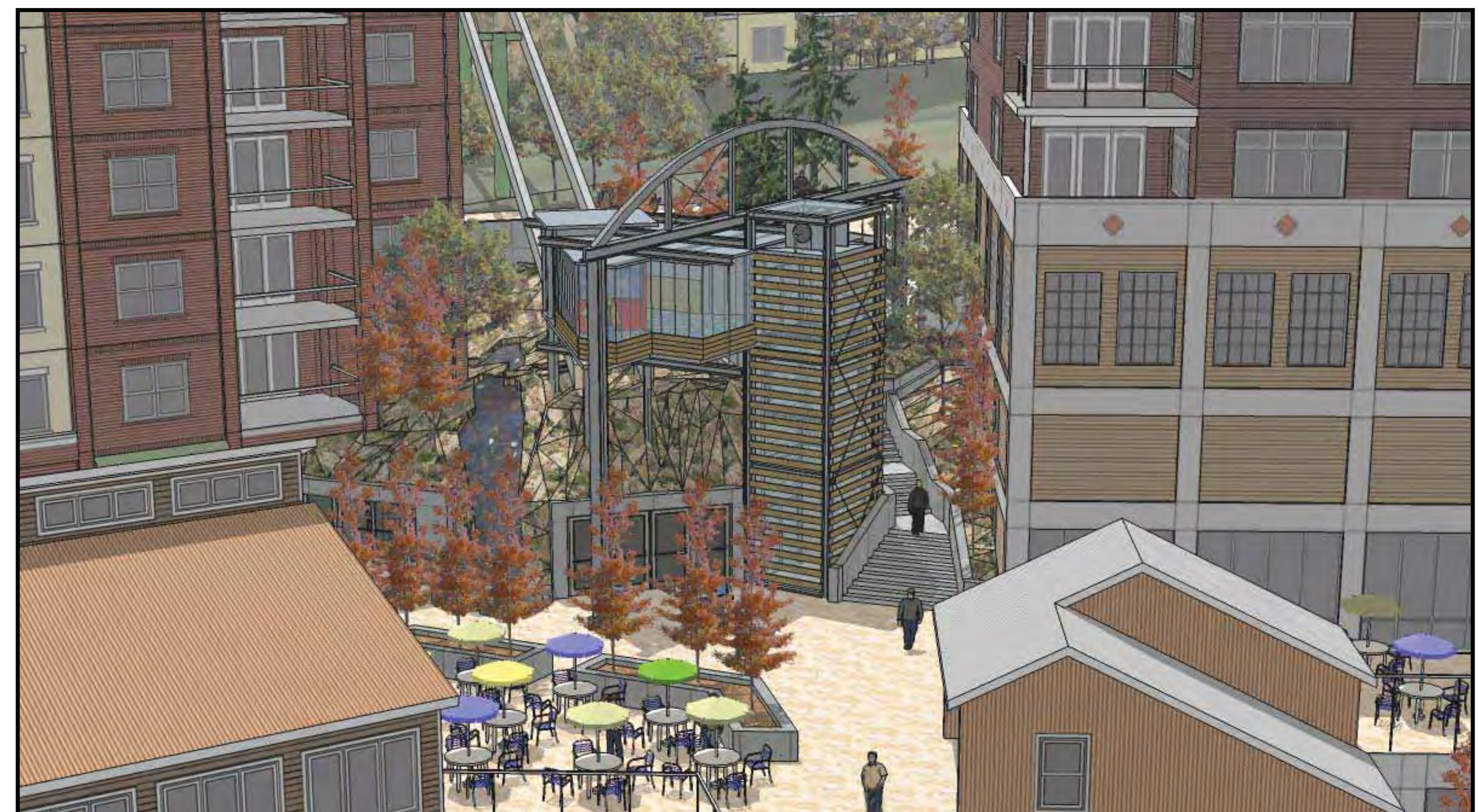
View from Lowell Avenue



View from Empire Avenue



View of the Pool Plaza



View of the Funicular Station

REVISIONS:

219 Stonington Highway  
Mill Valley, CA 94941  
Ph: 415-381-5800  
Fax: 415-381-5801  
www.integratedids.com



INTEGRATED  
DESIGN  
ASSOCIATES

SITE PLANNING  
LANDSCAPE ARCHITECTURE  
RESORT DESIGN  
2975 E Fern Avenue, #102  
Tremé, CA 95972  
Ph: 530-298-9267  
Fax: 530-298-9267

PERKINS DESIGN  
ASSOCIATES

**MPE**  
INCORPORATED

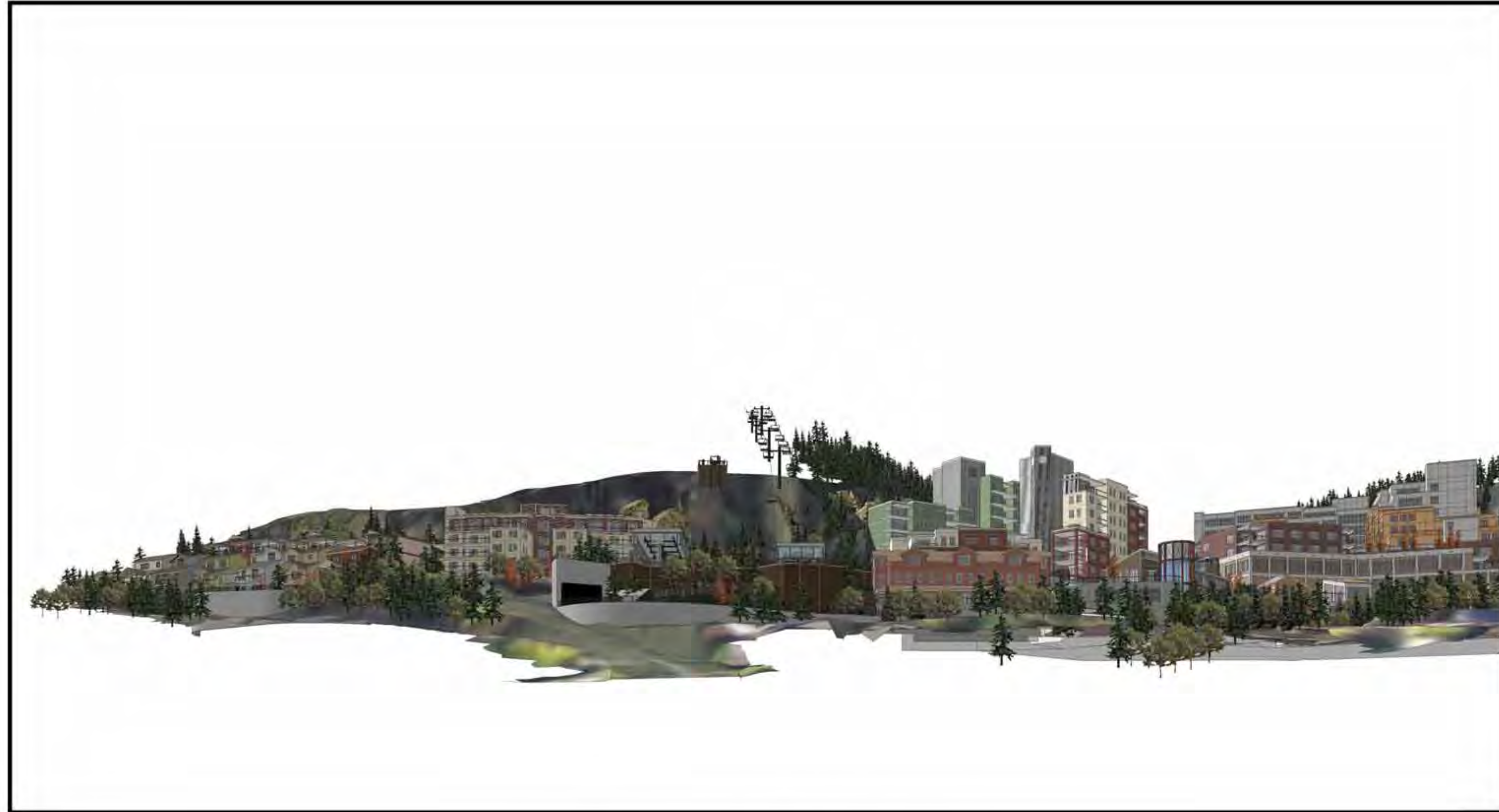
Selected Views of 3D Model - 1  
Developed by  
MPE, INC., PO Box 2429, Park City, UT 84060  
eMail: info@treasureparkcity.com

**treasure**  
PARK CITY, UTAH

SHEET NUMBER

**V-19**

6/12/2008



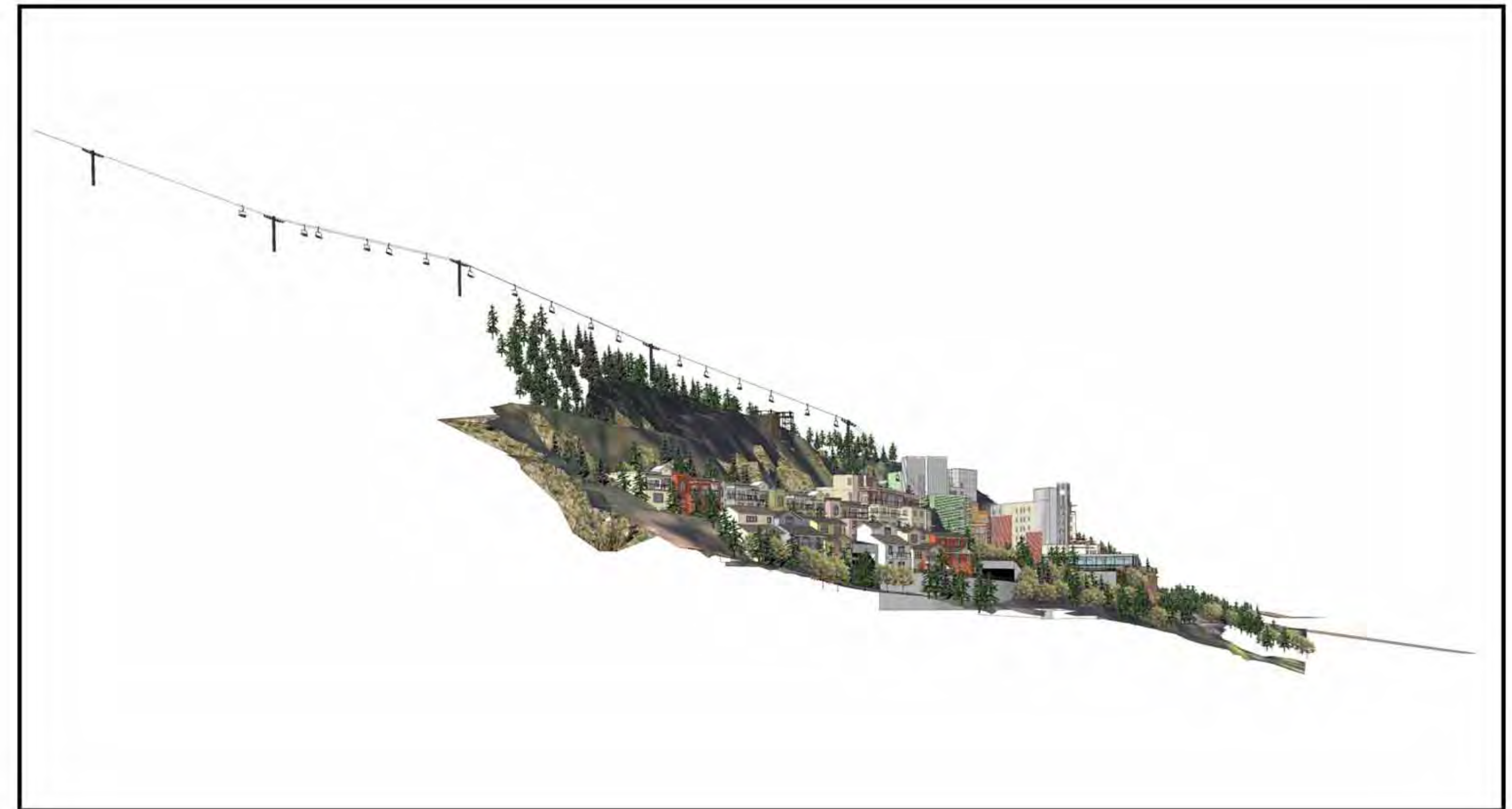
View from the Town Lift deck



View from the Roundabout



View from The Aerie



View from the Marsac Building

REVISIONS:

219 Stonington Highway  
 Mill Valley, CA 94041  
 Ph: 415-381-5800  
 Fax: 415-381-5801  
 www.integratedids.com



INTEGRATED  
 DESIGN  
 ASSOCIATES



PERKINS DESIGN  
 ASSOCIATES

MIPE  
 INCORPORATED

Selected Views of 3D Model - 2  
 Developed by  
 MPE, INC., PO Box 2429, Park City, UT 84060  
 eMail: info@treasureparkcity.com



SHEET NUMBER

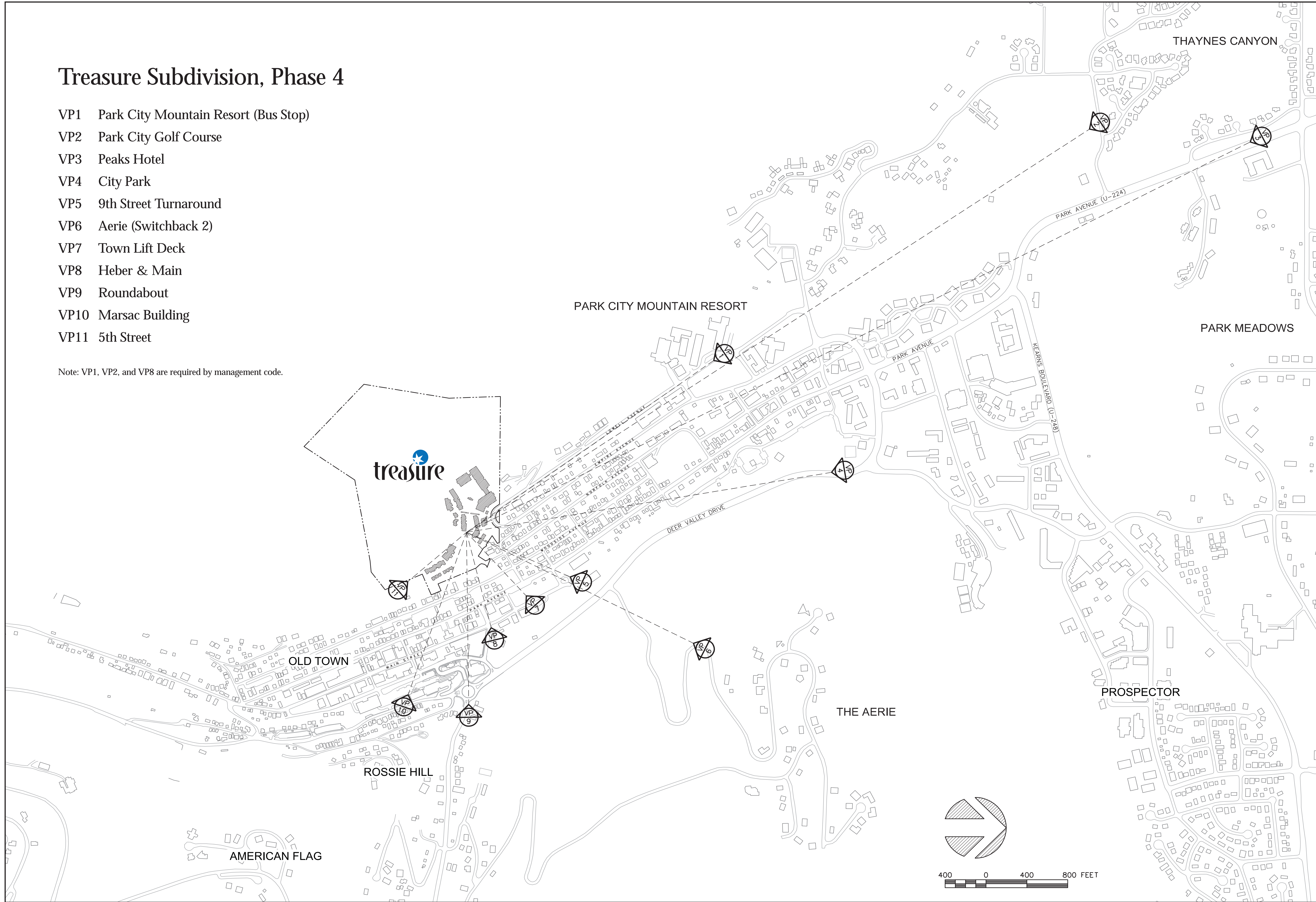
V-20

6/12/2008

# Treasure Subdivision, Phase 4

- VP1 Park City Mountain Resort (Bus Stop)
- VP2 Park City Golf Course
- VP3 Peaks Hotel
- VP4 City Park
- VP5 9th Street Turnaround
- VP6 Aerie (Switchback 2)
- VP7 Town Lift Deck
- VP8 Heber & Main
- VP9 Roundabout
- VP10 Marsac Building
- VP11 5th Street

Note: VP1, VP2, and VP8 are required by management code.



REVISIONS:

**SDI**  
 614 Main Street, Suite 404  
 P.O. Box 4560, Park City, Utah 84060  
 435-649-4499



**MPE**  
 INCORPORATED

Viewpoints Index  
 Developed by  
 MPE, INC., PO Box 2429, Park City, UT 84060  
 eMail: info@treasureparkcity.com



SHEET NUMBER  
**V-21**  
 6/12/2008



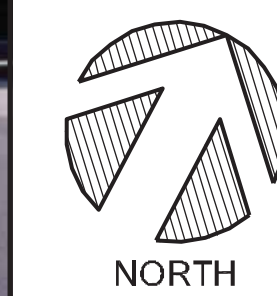
Viewpoint 1 – Park City Mountain Resort



Viewpoint 2 – Park City Golf Course

REVISIONS:

SDI  
614 Main Street, Suite 404  
P.O. Box 4560, Park City, Utah 84060  
435-649-4499



MIPE  
INCORPORATED

Camera Viewpoints 1 & 2  
Developed by  
MIPE, INC., PO Box 2429, Park City, UT 84060  
eMail: info@treasureparkcity.com

treasure  
PARK CITY, UTAH

SHEET NUMBER

V-22

6/12/2008



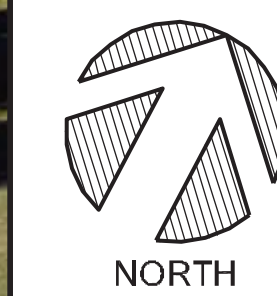
Viewpoint 3 – Peaks Hotel



Viewpoint 4 – City Park

REVISIONS:

SDI  
614 Main Street, Suite 404  
P.O. Box 4560, Park City, Utah 84060  
435-649-4499



MPE  
INCORPORATED

Camera Viewpoints 3 & 4  
Developed by  
MPE, INC., PO Box 2429, Park City, UT 84060  
eMail: info@treasureparkcity.com



SHEET NUMBER

V-23

6/12/2008



Viewpoint 5 – 9th Street Turnaround



Viewpoint 6 – Aerie (Switchback 2)

REVISIONS:

SDI  
614 Main Street, Suite 404  
P.O. Box 4560, Park City, Utah 84060  
435-649-4499



MIPE  
INCORPORATED

Camera Viewpoints 5 & 6  
Developed by  
MIPE, INC., PO Box 2429, Park City, UT 84060  
eMail: info@treasureparkcity.com

treasure  
PARK CITY, UTAH

SHEET NUMBER

V-24

6/12/2008





Viewpoint 7 – Town Lift Deck



Viewpoint 8 – Heber & Main

REVISIONS:

SDI  
614 Main Street, Suite 404  
P.O. Box 4560, Park City, Utah 84060  
435-649-4499



MIPE  
INCORPORATED

Camera Viewpoints 7 & 8  
Developed by  
MIPE, INC., PO Box 2429, Park City, UT 84060  
eMail: info@treasureparkcity.com



SHEET NUMBER  
**V-25**  
6/12/2008



Viewpoint 9 – Roundabout



Viewpoint 10 – Marsac Building

REVISIONS:

SDI  
614 Main Street, Suite 404  
P.O. Box 4560, Park City, Utah 84060  
435-649-4499



MIPE  
INCORPORATED

Camera Viewpoints 9 & 10  
Developed by  
MIPE, INC., PO Box 2429, Park City, UT 84060  
eMail: info@treasureparkcity.com

treasure  
PARK CITY, UTAH

SHEET NUMBER

V-26

6/12/2008



Viewpoint 11 – 5th Street

REVISIONS:

**SDI**  
614 Main Street, Suite 404  
P.O. Box 4560, Park City, Utah 84060  
435-649-4499



**MPE**  
INCORPORATED

Camera Viewpoint 11  
Developed by  
MPE, INC., PO Box 2429, Park City, UT 84060  
eMail: info@treasureparkcity.com




SHEET NUMBER


**V-27**

6/12/2008

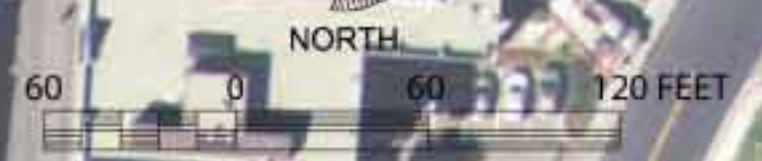


Imported from HL.01

 Demonstrates 0'- 0" maximum building height\*

 Garage Exterior Wall

\*Based on Sheet 22 of the Sweeney Properties Master Plan as approved October 1986.



REVISIONS:

ids INTEGRATED DESIGN ASSOCIATES  
 219 Stonington Highway  
 Mill Valley, CA 94041  
 Ph: 415-381-5900  
 Fax: 415-381-5801  
 www.integratedids.com

SITE PLANNING  
 LANDSCAPE ARCHITECTURE  
 RESORT DESIGN  
 2976 E Fern Avenue, #102  
 Irvine, CA 92615  
 Ph: 949-298-9267  
 Fax: 949-298-9267

PERKINS DESIGN ASSOCIATES

**MPE**  
 INCORPORATED

Illustrative Plan — Setback

Developed by  
 MPE, INC., PO Box 2429, Park City, UT 84060  
 eMail: info@treasureparkcity.com

treasure  
 PARK CITY, UTAH

SHEET NUMBER  
**V-28**  
 12/08/2008