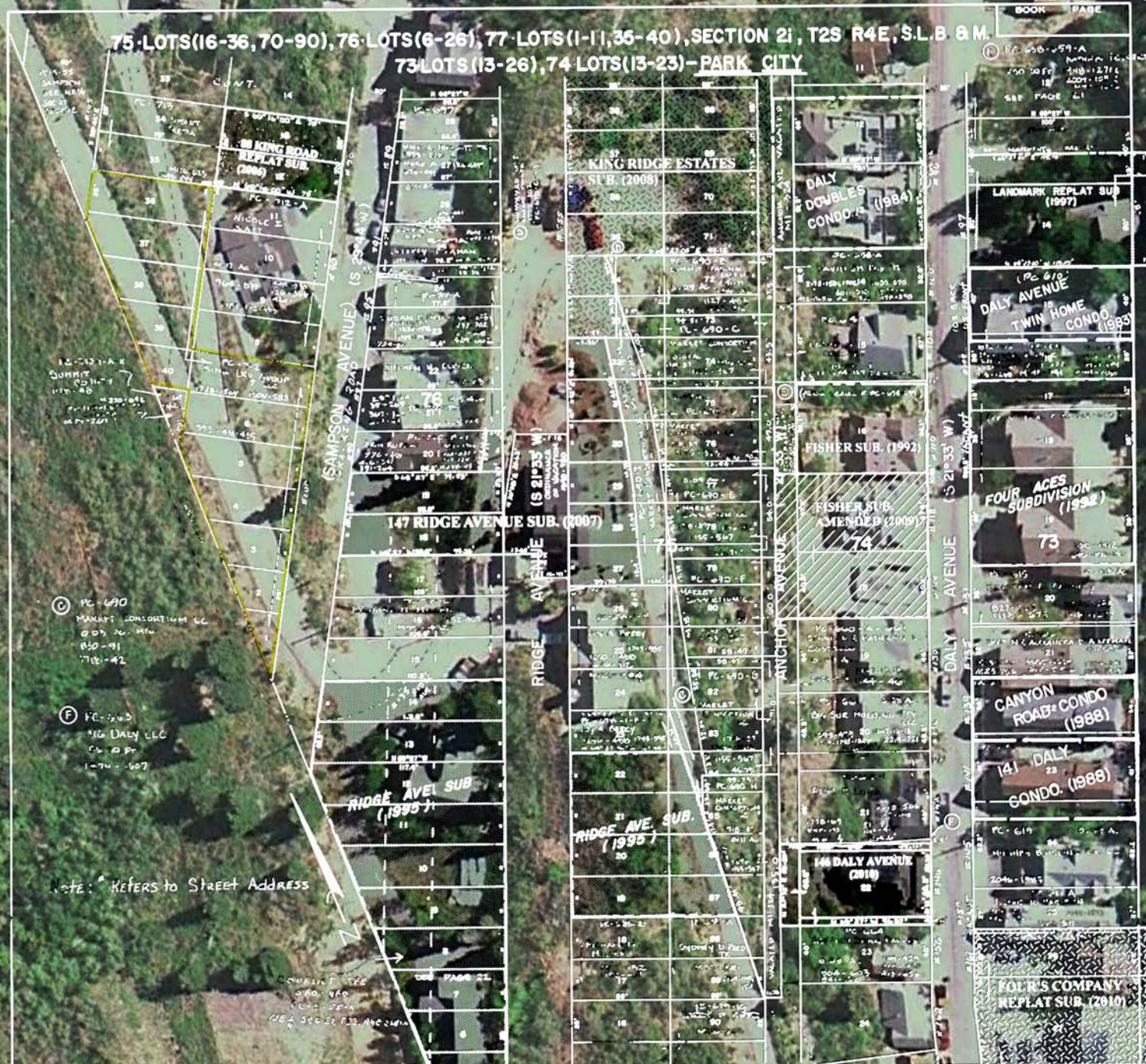


75 LOTS (16-36, 70-90), 76 LOTS (8-26), 77 LOTS (1-11, 35-40), SECTION 21, T2S R4E, S.L.B. & M.
 73 LOTS (13-26), 74 LOTS (13-23) - PARK CITY



- © PC-690
MARKET CONSORTIUM LLC
C.D.S. No. 111
850-91
710-42
- Ⓟ PC-543
THE DAILY LLC
C.D.S. No. 111
1-74-607

Note: * Refers to Street Address

Approved	REVISIONS - DATE AND INITIAL	(In Pencil)
Utah State Tax Comm		
Date	By	
	Engineering Associates, Inc.	

SUMMIT COUNTY, UTAH

BOOK	PAGE

Alice CLAIM

AERIAL IMAGE WITH
 123 RIDGE AVE PLAT OVERLAY

KING DEVELOPMENT GROUP, LLC
 P.O. BOX 244
 PARK CITY, UTAH 84060

