

Park City Main Street Plaza

04 February 2016

GSBS
ARCHITECTS 

CIVITAS STRUCK

Plaza Goals

Generate daily activity

Allow and promote event activity

Encourage stay and play

Combine natural and built elements

Be multi-season

Recommendation

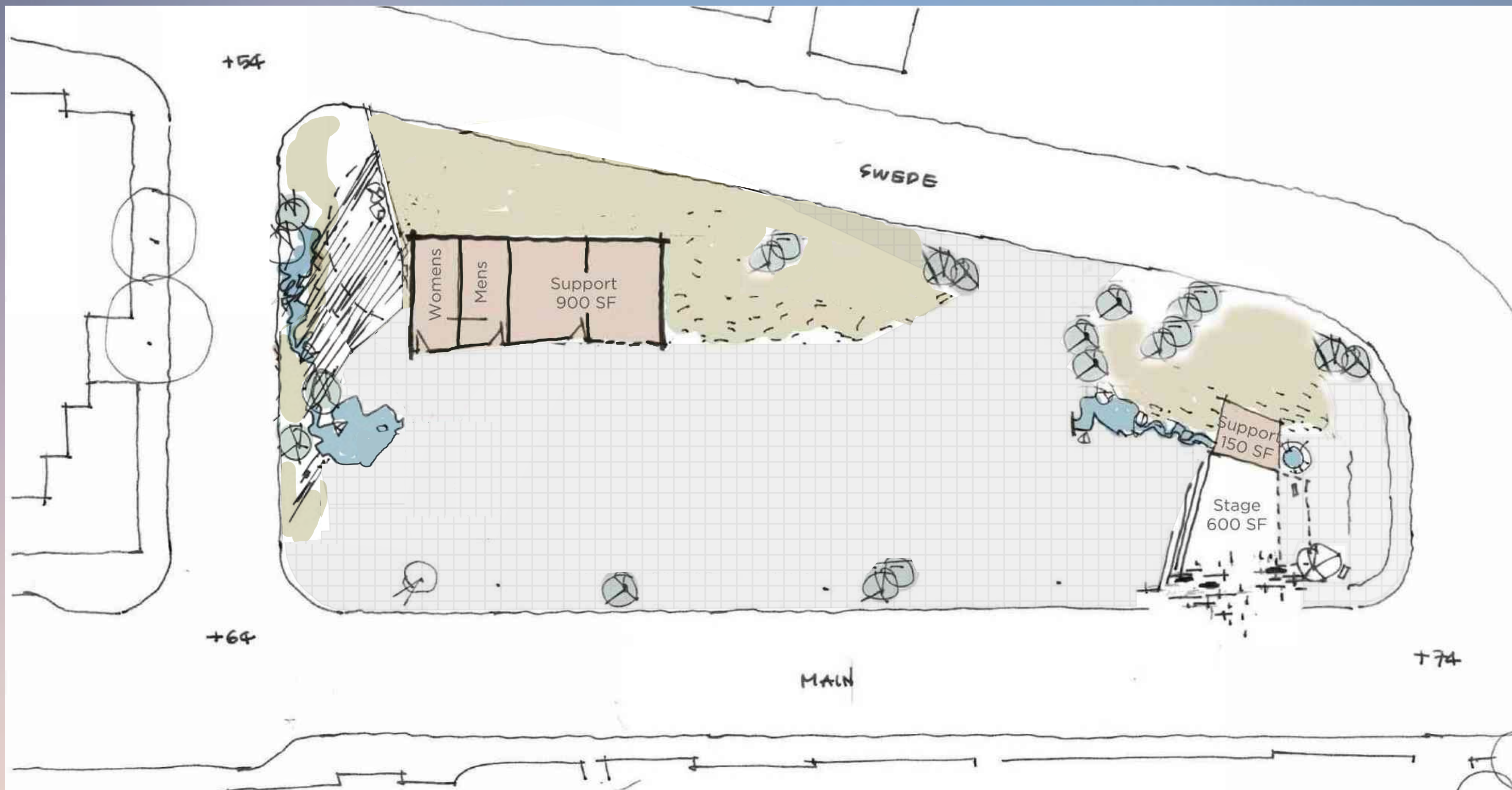
GSBS
ARCHITECTS 

CIVITAS STRUCK

Basic Plaza Layout

1. Flexible plaza space that can overflow into Main Street and accommodate 250 to 2000 people, thirty 10'x10' tents or one 100'x40' tent
2. A new road connecting Main Street and Swede at the North end of the plaza to allow for the closure of Main Street on the plaza without affecting traffic
3. Sloping connection from the new road to the plaza that brings Swede, Main Street and the new road together while resolving grading to the main plaza space at the Main Street Elevation
4. A permanent stage for a smaller performance that can be expanded for larger events
5. Restrooms
6. Storage and support space for maintenance and ease of use
7. Trash facilities
8. Green space and trees to combine the natural and built environment

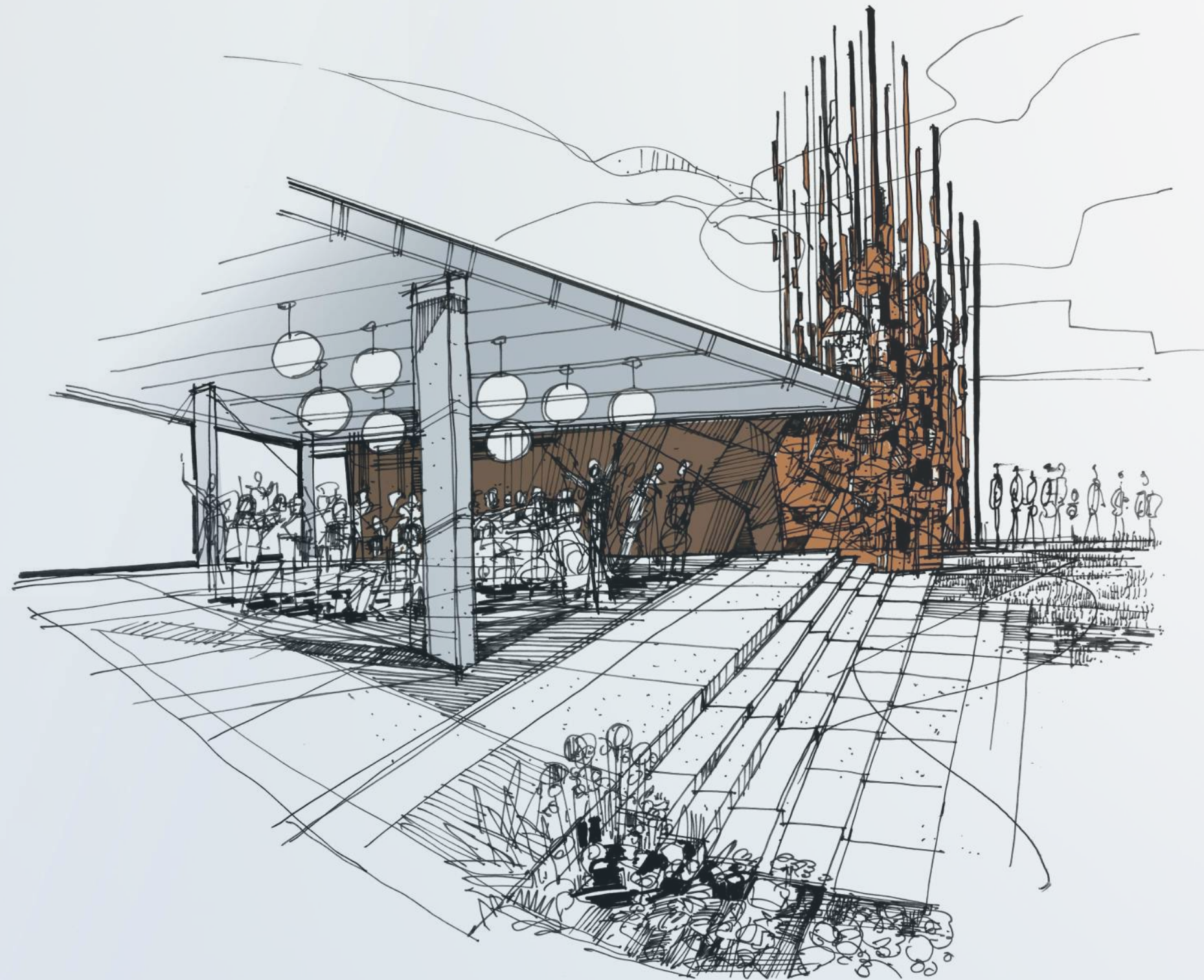
Basic Plaza Layout



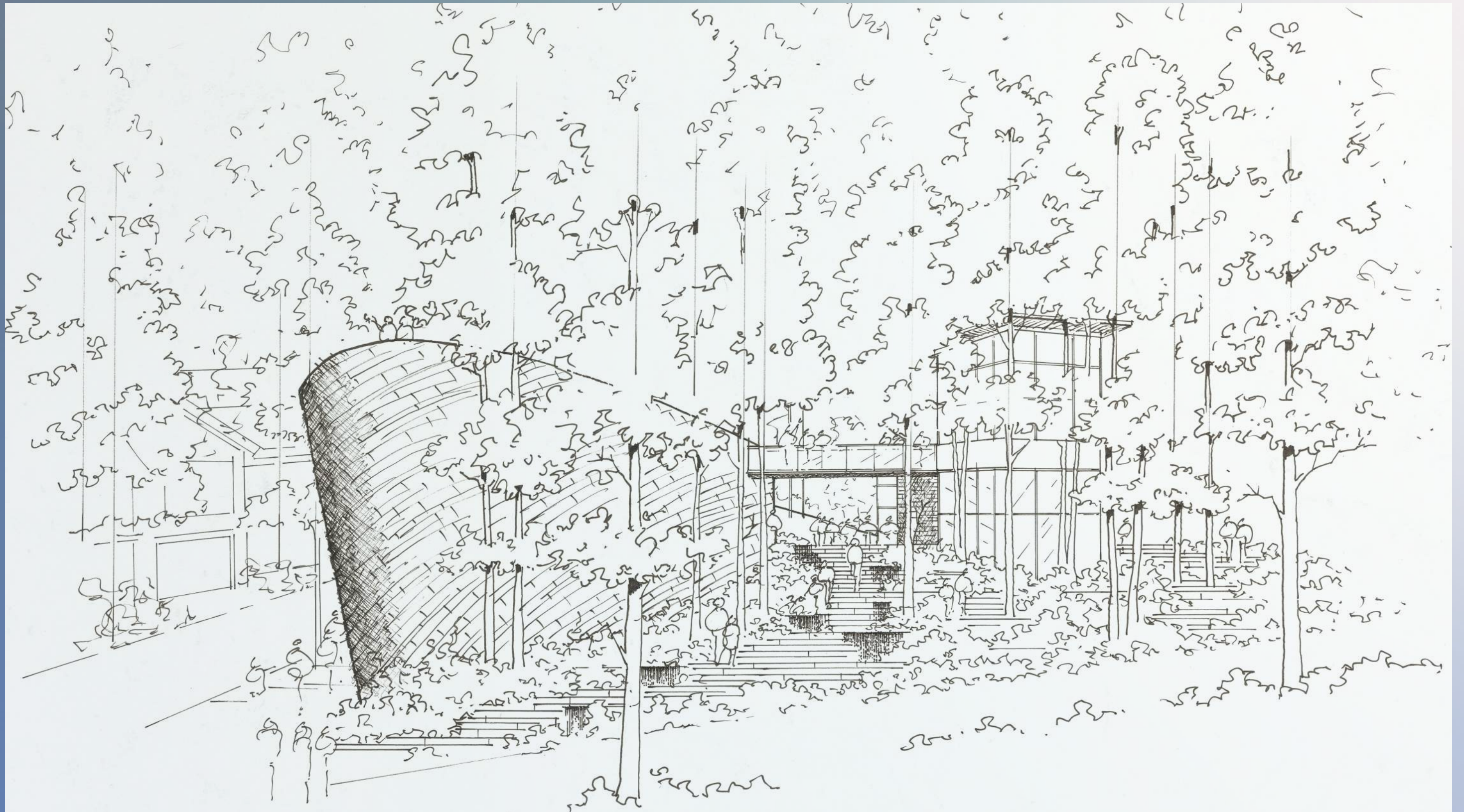
Schemes	Daily Activity	Promote Events	Encourage Stay & Play	Combine Landscape and Building Program	Multi Seasonal Use	Park-like Character	Urban Character	Promote Sustainability	Increase Flexibility	Enhances Streetscape	Serve Residents	Serve Visitors	Serve Main Street Workers	Create a Destination	Create Vibrant Edges	Create Revenue	Decrease O&M Requirements	Decrease Vehicle Traffic	Total	Cost	Net Zero Cost	Total Cost	Cost w/ Recommended Elements
Basic Plaza, No Parking	1	0	2	1	1	5	1	4	2	1	2	1	2	2	0	2	4	3	34	\$2,771,500.00	\$164,000.00	\$2,935,500.00	\$4,976,547.50
Basic Plaza, Parking On-Site	2	2	2	4	2	4	2	3	3	3	3	2	2	2	1	3	3	4	47	\$7,484,200.00	\$249,000.00	\$7,733,200.00	\$9,774,247.50
Basic Plaza, Parking Off-Site	1	0	2	1	1	5	1	3	2	1	3	2	2	2	0	3	3	3	35	\$5,071,500.00	\$235,000.00	\$5,306,500.00	\$7,347,547.50
Elements																							
Convenient Food (250 SF)	1	0	1	1	1	0	1	-1	1	1	1	1	1	0	1	1	0	0	11	\$76,187.50	\$5,500.00	\$81,687.50	see above
Additional Food/Commercial (250 SF)	1	0	1	1	1	0	1	-1	1	1	1	1	1	0	1	1	0	0	11	\$76,187.50	\$5,500.00	\$81,687.50	see above
Multipurpose Space (1100 SF)	1	1	1	1	1	0	1	-1	1	1	1	1	1	0	1	1	-1	-1	10	\$307,797.50	\$24,200.00	\$331,997.50	see above
Water Feature	1	0	1	1	0	1	1	-1	0	1	1	1	1	1	1	0	-1	0	9	\$172,500.00	\$34,500.00	\$207,000.00	see above
Landform (North)	1	1	1	1	1	1	-1	-1	0	1	1	1	1	1	1	0	-1	0	9	\$676,200.00	\$0.00	\$676,200.00	see above
Landform (South)	1	1	1	1	1	1	-1	-1	0	1	1	1	1	1	1	0	-1	0	9	\$450,800.00	\$0.00	\$450,800.00	see above
Iconic Sculpture (Stage)	1	0	1	0	1	0	1	0	0	1	1	1	0	1	1	0	-1	0	8	\$345,000.00	\$0.00	\$345,000.00	see above
Iconic Sculpture (Circulation)	1	0	1	0	1	0	1	0	0	1	1	1	0	1	1	0	-1	0	8	\$230,000.00	\$50,000.00	\$280,000.00	see above
Full Upper Deck	1	1	0	0	0	0	1	0	1	1	1	1	0	1	1	0	-1	0	8	\$397,900.00	\$0.00	\$397,900.00	see above
Reduced Upper Deck	1	1	0	0	0	0	1	0	1	1	1	1	0	1	1	0	-1	0	8	\$154,100.00	\$0.00	\$154,100.00	see above
Warming/Catering Kitchen (500 SF)	0	1	0	0	0	0	0	-1	1	0	1	1	1	0	0	1	-1	0	4	\$152,375.00	\$11,000.00	\$163,375.00	see above
Shade Structure	1	-1	0	0	1	0	0	0	-1	0	1	1	1	0	0	0	-1	0	2	\$258,750.00	\$0.00	\$258,750.00	see above

Recommended elements are highlighted in blue.
Elements are in order of ranking highest to lowest.

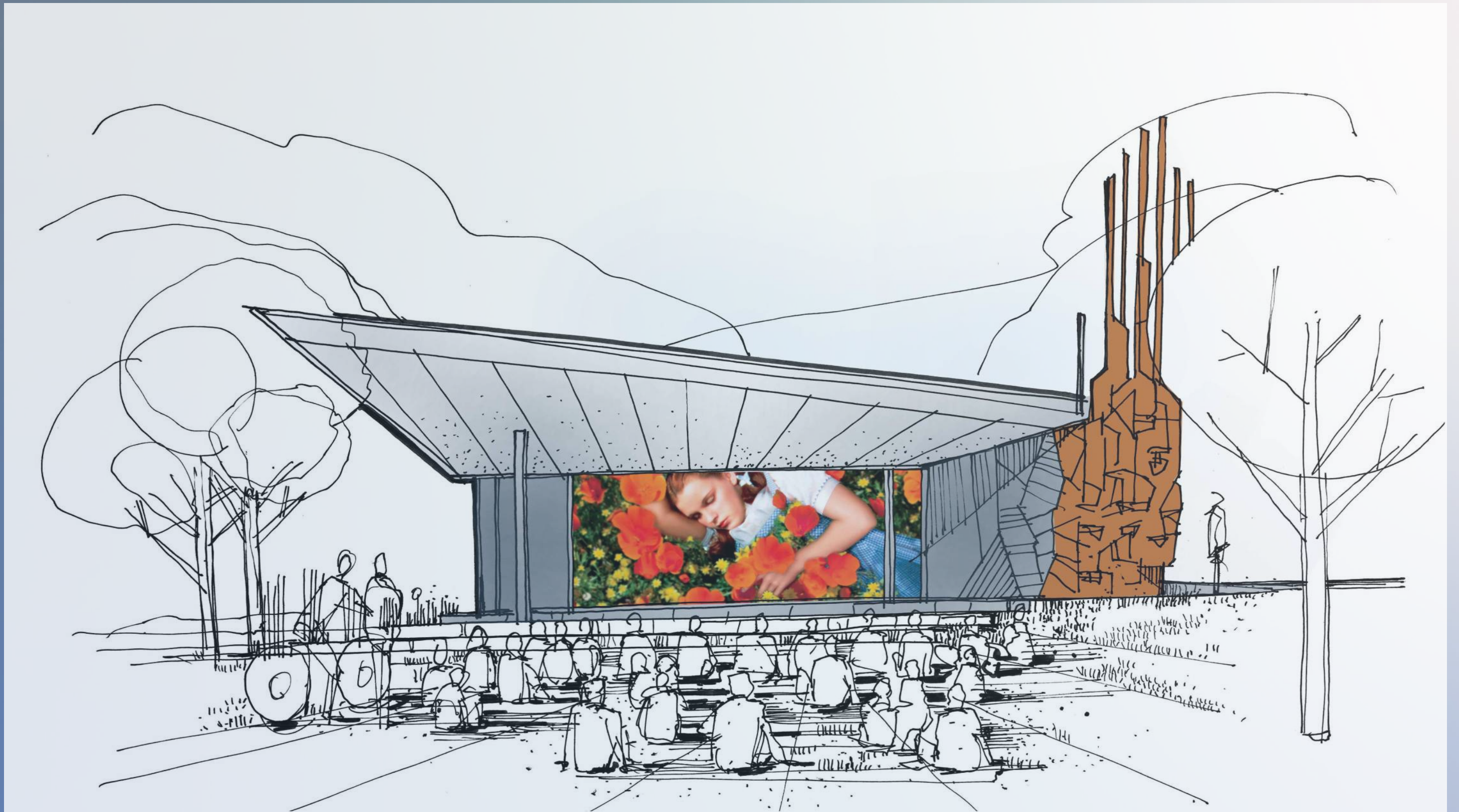
Stage



Brew Pub



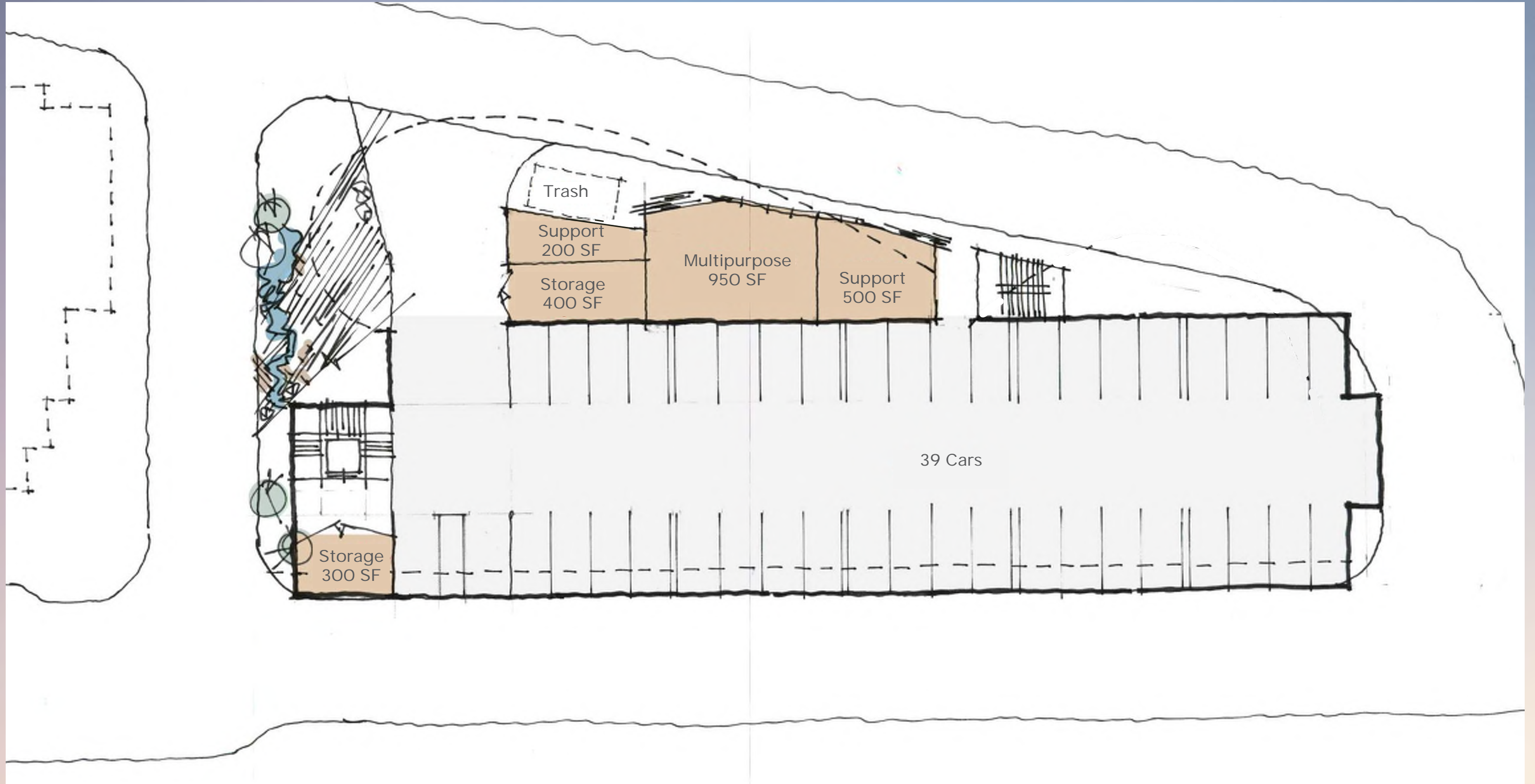
Movie Night



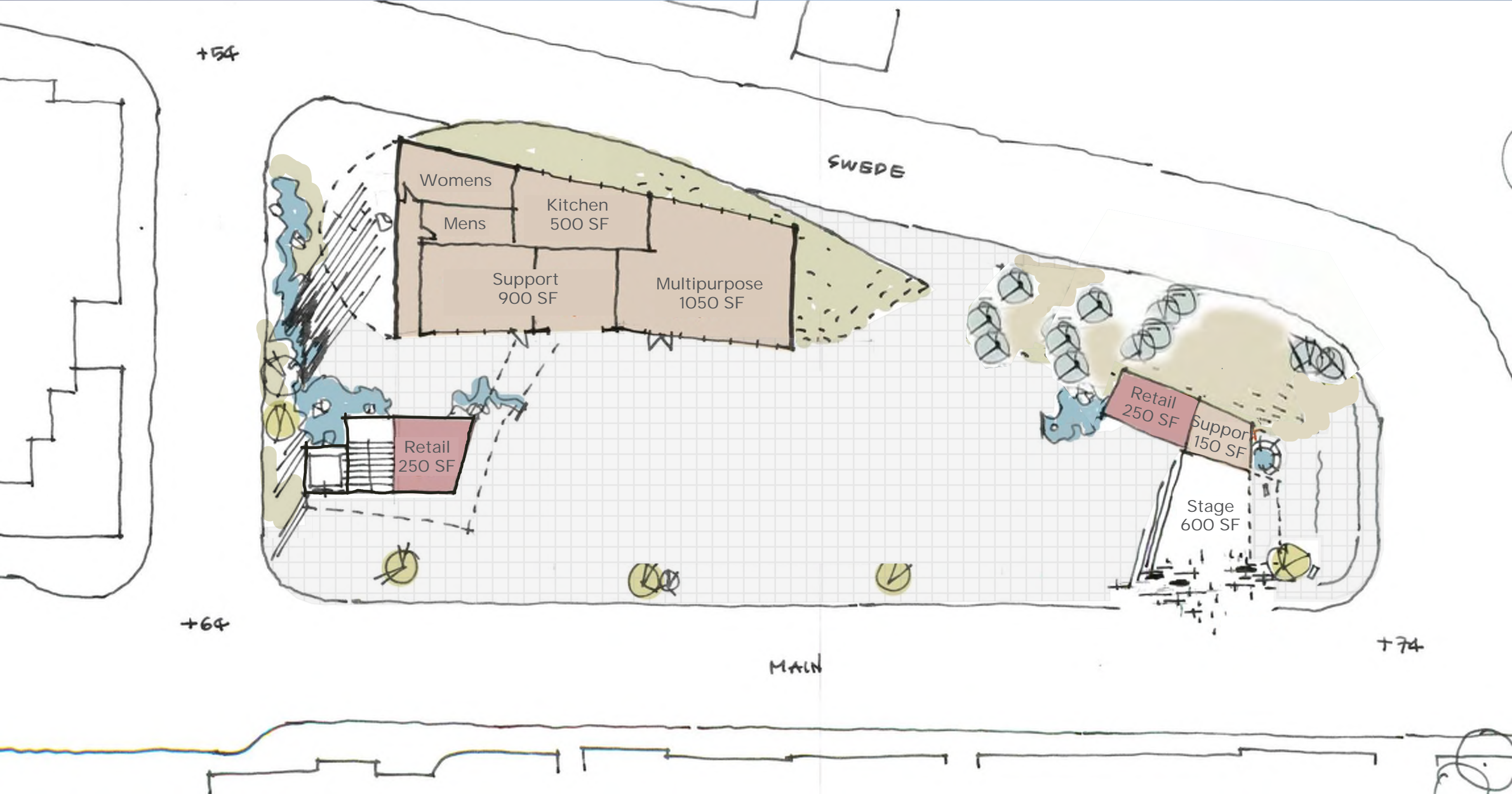
Plaza



On Site Parking



Plaza Recommendation



Plaza Recommendation

