

1 Level 1 Plan - Plaza
 A202 SCALE: 1" = 10'-0" 0 10 20 feet N



SALT LAKE CITY
 10 Exchange Place #112
 Salt Lake City, UT 84111
 www.ibigroup.com
 tel 801 532 4233
 fax 801 532 4231

PARK CITY
 340 Main Street #203
 Park City, UT 84060
 www.ibigroup.com
 tel 435 615 8394
 fax 435 615 8397



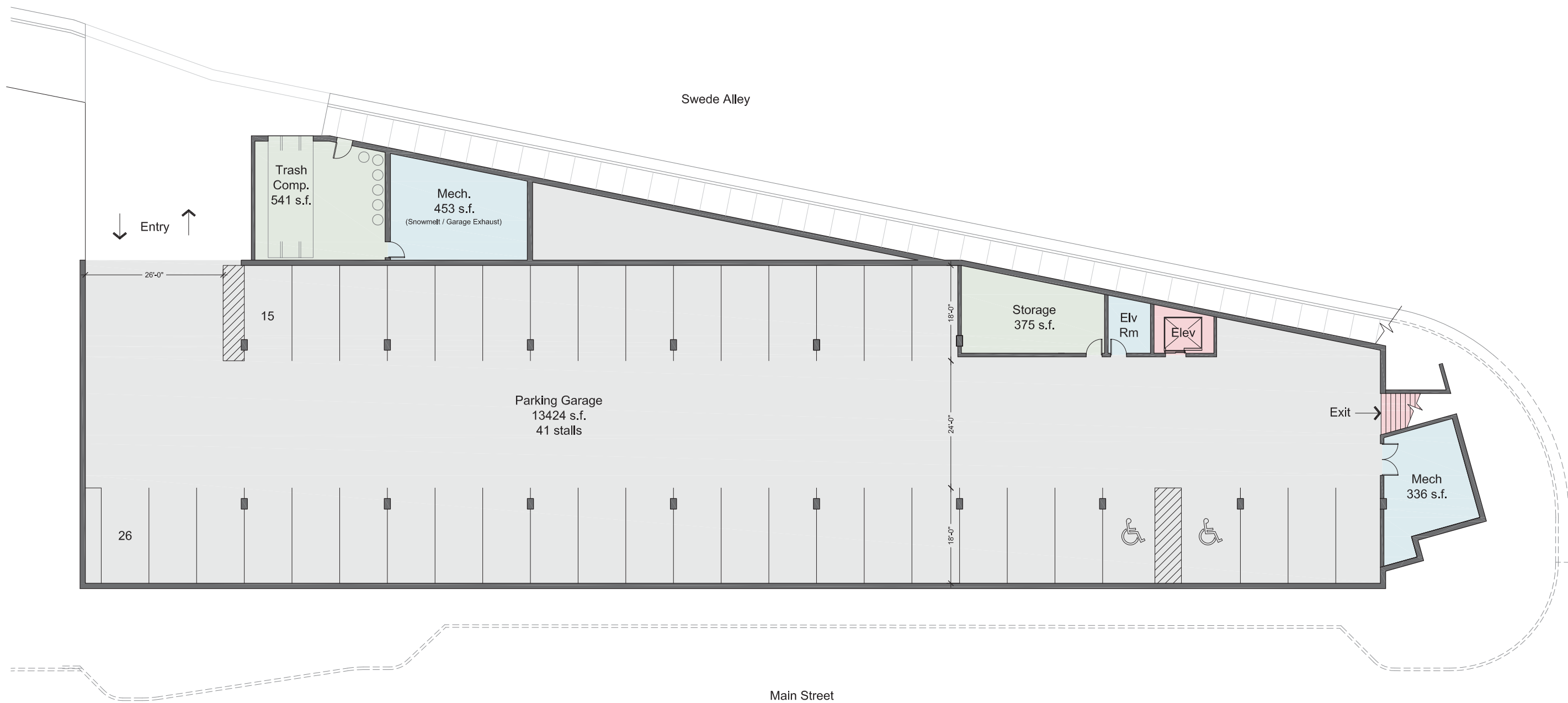
BREW PUB PLAZA BUILDING OPTION 1

May 2012

**Historic Park City
 Improvement Plan**
 Park City, Utah

BP-A1

Project #31622



1 SubLevel - Parking Garage
 A201 SCALE: 1" = 10'-0"
 0 10 20 feet N



SALT LAKE CITY
 10 Exchange Place #112
 Salt Lake City, UT 84111
 www.ibigroup.com
 tel 801 532 4233
 fax 801 532 4231

PARK CITY
 340 Main Street #203
 Park City, UT 84060
 www.ibigroup.com
 tel 435 615 8394
 fax 435 615 8397



BREW PUB PLAZA BUILDING OPTION 1

May 2012

**Historic Park City
 Improvement Plan**
 Park City, Utah

BP-A2

Project #10102



BREW PUB NORTH ELEVATION



SALT LAKE CITY
 10 Exchange Place #112
 Salt Lake City, UT 84111
www.ibigroup.com
 tel 801 532 4233
 fax 801 532 4231

PARK CITY
 340 Main Street #203
 Park City, UT 84060
www.ibigroup.com
 tel 435 615 8394
 fax 435 615 8397



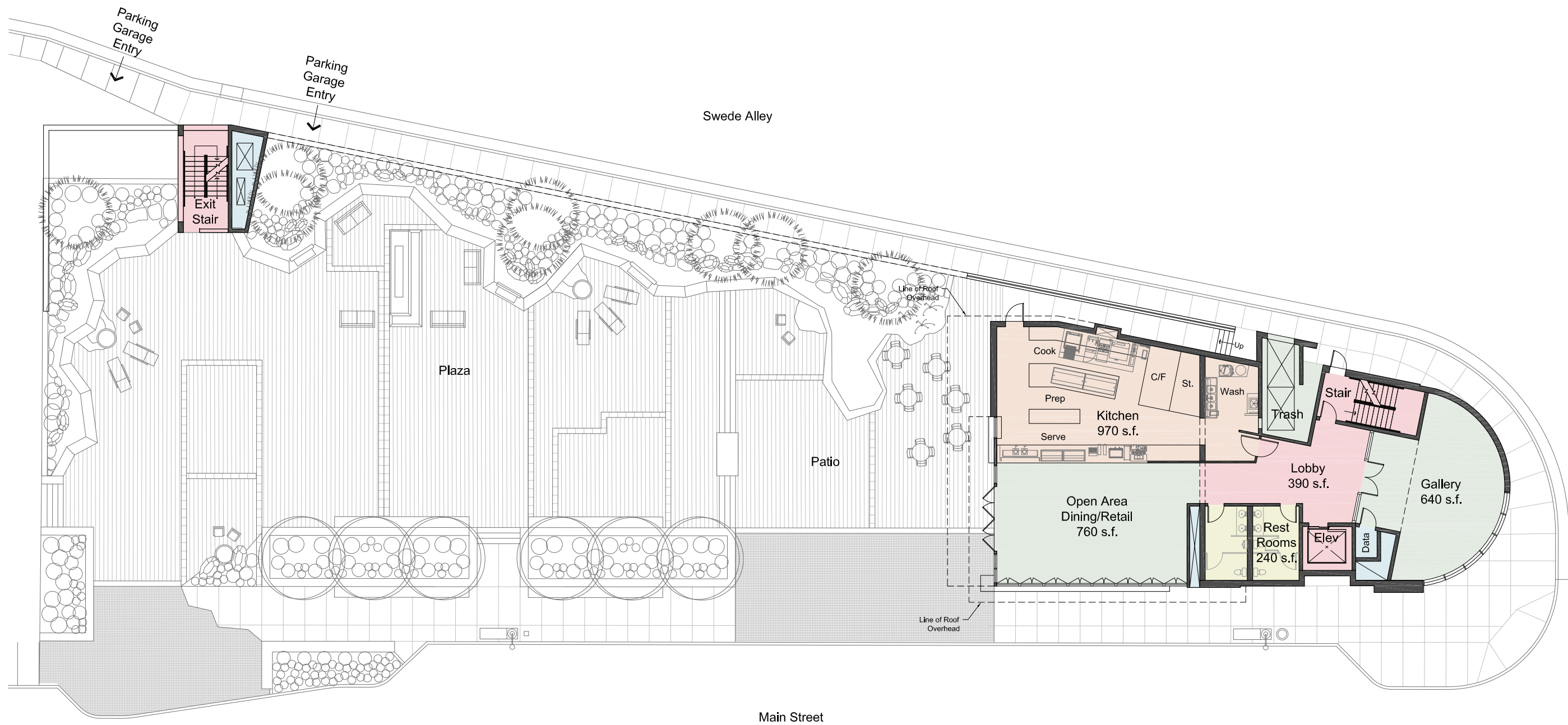
BREW PUB PLAZA BUILDING OPTION 1

May 2012

Historic Park City
 Improvement Plan
 Park City, Utah

BP-A3

Project #61022



Level 1 Plan - Plaza
 SCALE: 1" = 10'-0"
 0 10 20 feet N



SALT LAKE CITY
 10 Exchange Place #112
 Salt Lake City, UT 84111
 www.ibigroup.com
 tel 801 532 4233
 fax 801 532 4231

PARK CITY
 340 Main Street #203
 Park City, UT 84060
 www.ibigroup.com
 tel 435 615 8394
 fax 435 615 8397

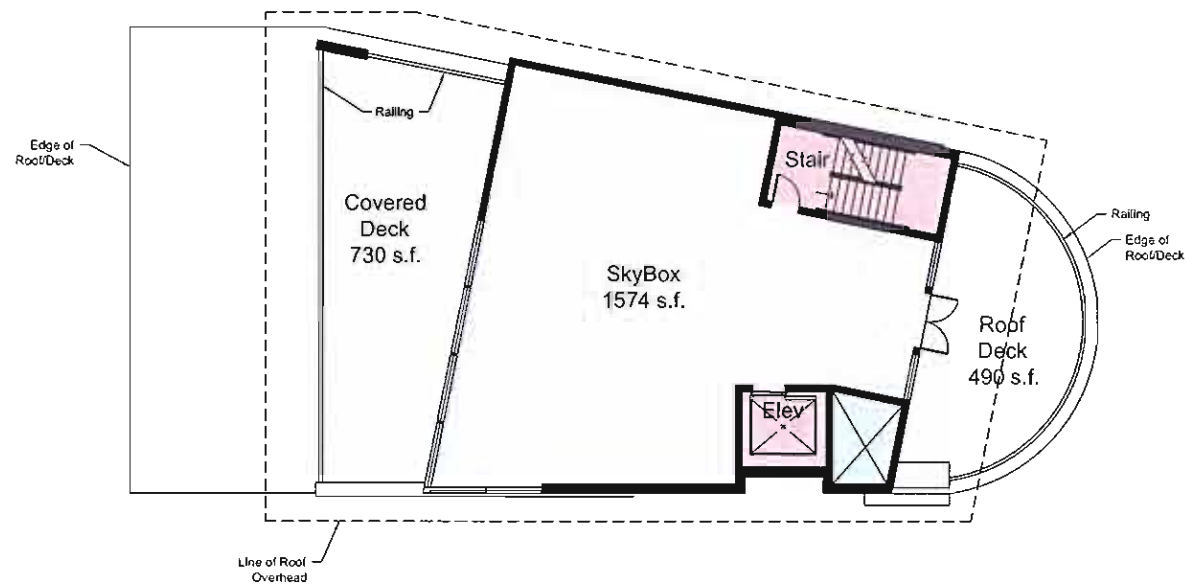


BREW PUB PLAZA BUILDING OPTION 2

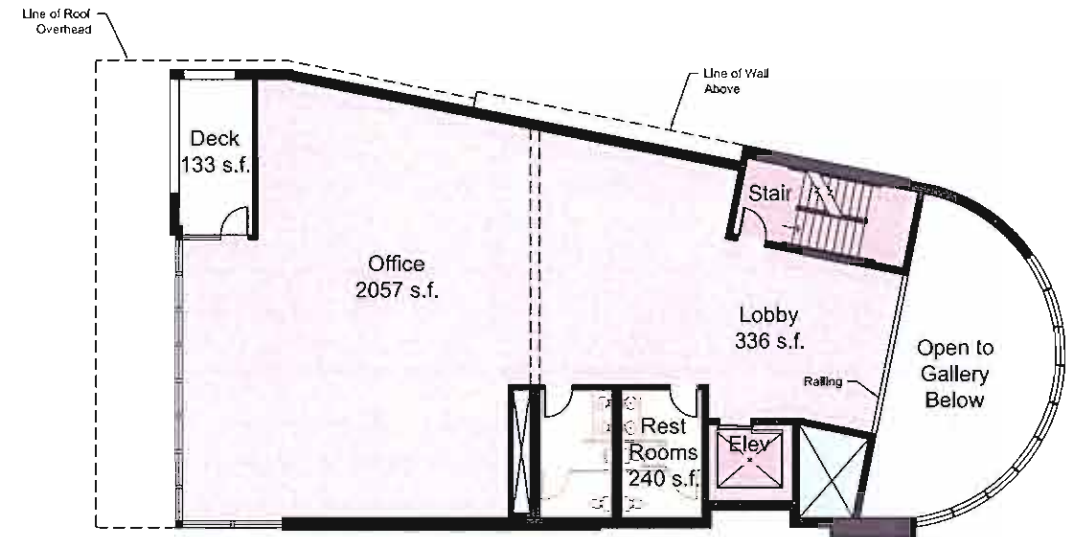
May 2012

**Historic Park City
 Improvement Plan**
 Park City, Utah

BP-A9



Level 3 Plan - Skybox
SCALE: 1" = 10'-0"



Level 2 Plan - Office
SCALE: 1" = 10'-0"



SALT LAKE CITY
10 Exchange Place #112
Salt Lake City, UT 84111
www.ibigroup.com
tel 801 532 4233
fax 801 532 4231

PARK CITY
340 Main Street #203
Park City, UT 84060
www.ibigroup.com
tel 435 615 8394
fax 435 615 8397



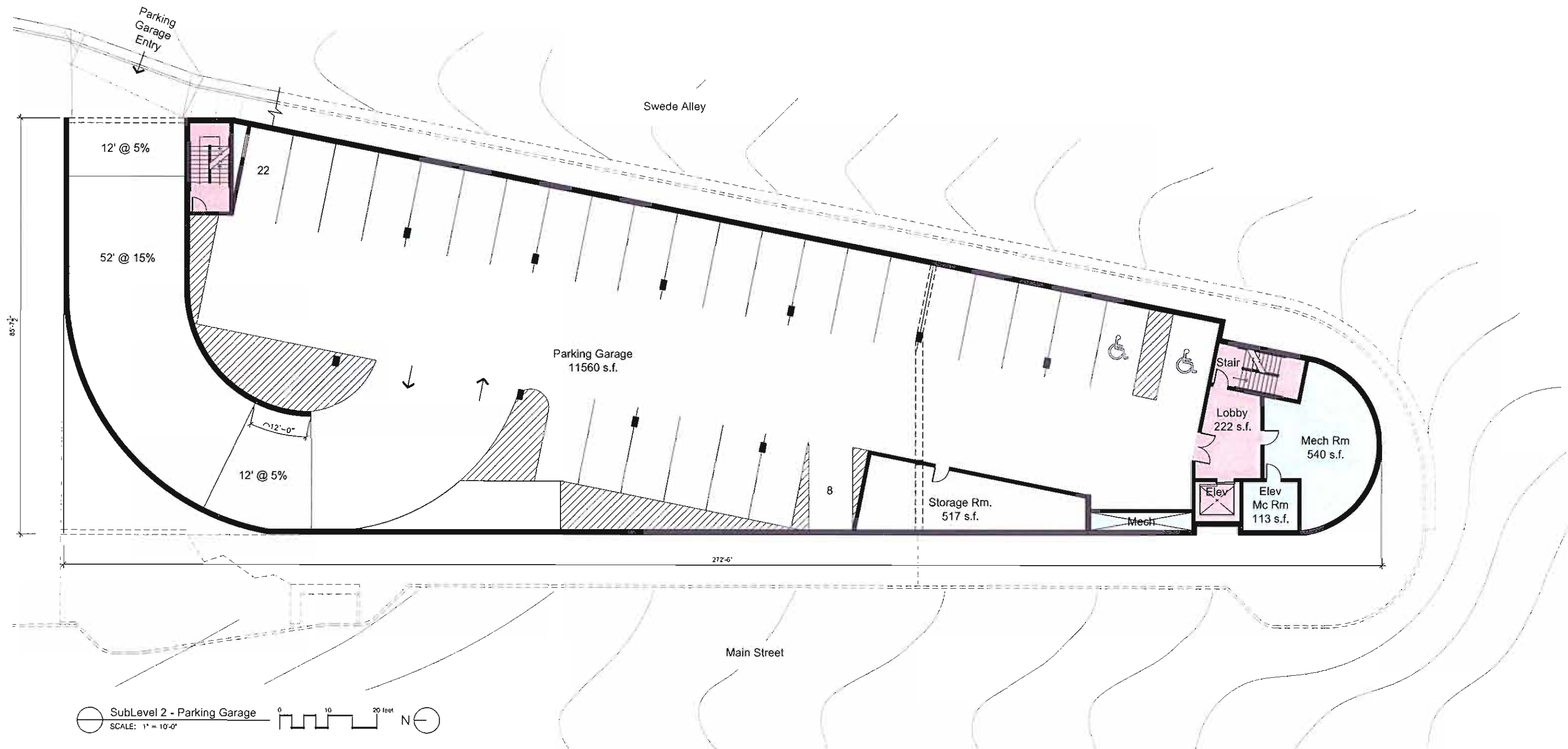
BREW PUB PLAZA BUILDING OPTION 2

May 2012

Historic Park City
Improvement Plan
Park City, Utah

BP-A10

Project #01627



SALT LAKE CITY
10 Exchange Place #112
Salt Lake City, UT 84111
www.lbigroup.com
tel 801 532 4233
fax 801 532 4231

PARK CITY
340 Main Street #203
Park City, UT 84060
www.lbigroup.com
tel 435 615 8394
fax 435 615 8397

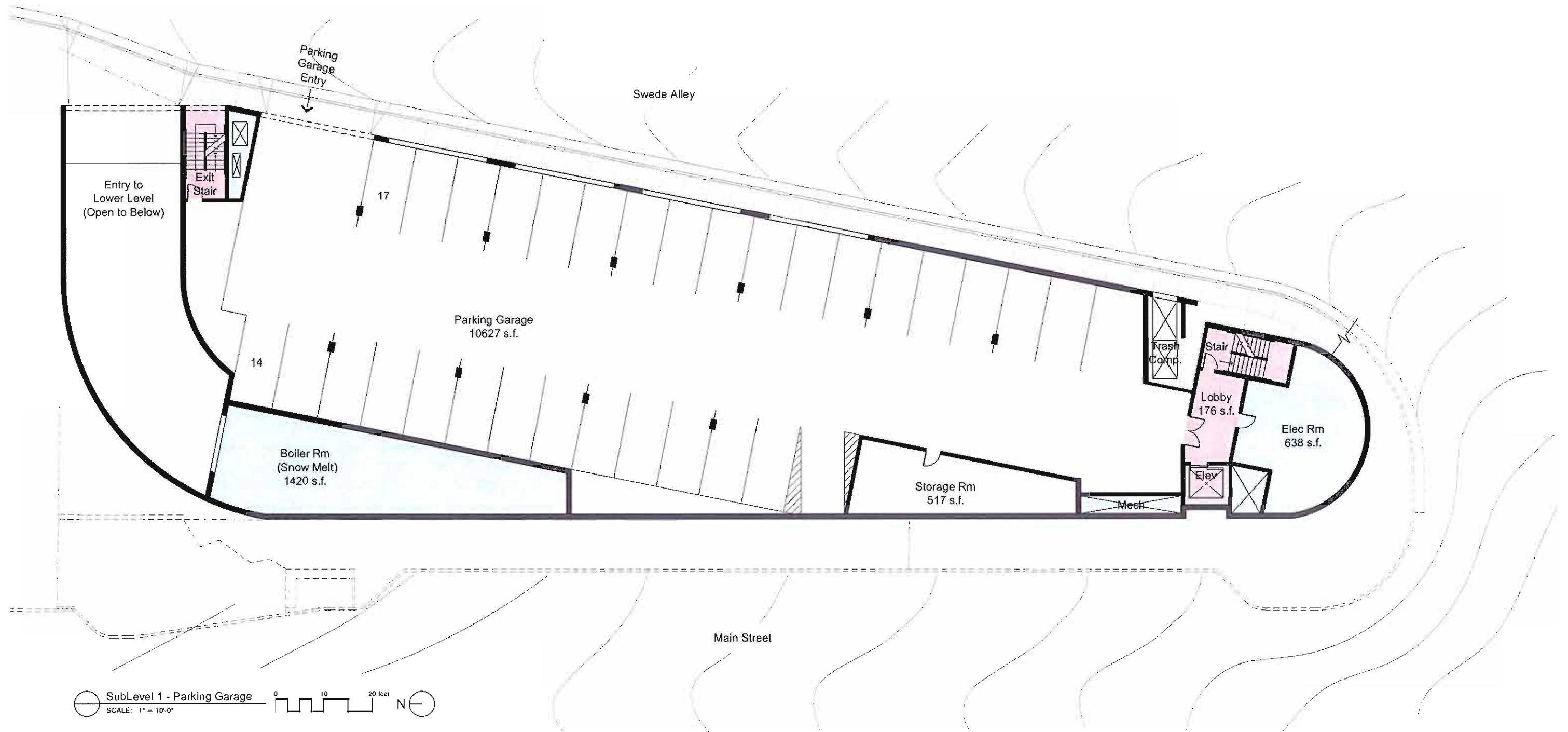


BREW PUB PLAZA BUILDING OPTION 2

May 2012

Historic Park City
Improvement Plan
Park City, Utah

BP-A11



SALT LAKE CITY
 10 Exchange Place #112
 Salt Lake City, UT 84111
 www.lblgroup.com
 tel 801 532 4233
 fax 801 532 4231

PARK CITY
 340 Main Street #203
 Park City, UT 84060
 www.lblgroup.com
 tel 435 615 8394
 fax 435 615 8397



BREW PUB PLAZA BUILDING OPTION 2

May 2012

Historic Park City
 Improvement Plan
 Park City, Utah

BP-A12

Project #10327