

PRESS RELEASE

For Immediate Release



Collaboration in Summit County Promotes Regional Open Space Gains

Four-way land deal would preserve 781 acres of open space in Toll Canyon

SUMMIT COUNTY, Utah — December 5, 2012

The Summit County Council, Snyderville Basin Special Recreation District (Basin Recreation), Basin Open Space Advisory Committee (BOSAC), and the Park City Council today announced a creative collaboration with Utah Open Lands to preserve 781 acres of open space in Toll Canyon. Located above Timberline subdivision, between the Pinebrook and Summit Park subdivisions, Toll Canyon long has been considered by open space advocates as a critical acquisition for wildlife corridor preservation and by outdoor recreation enthusiasts for its trail connections. Acquisition of this important parcel will bring the total amount of open space acquired via voter approved funding in western Summit County to over 6,000 acres.

With less than a month to execute the purchase agreement, the \$6.1 million price tag is out of reach for any single entity. Determined not to lose this opportunity that took Utah Open Lands and BOSAC several years to cultivate, the agencies are proposing a regional collaboration to fund this critical open space acquisition.

- The initial \$2 million down payment, due before the end of the year, would be funded by open space funds from **Basin Recreation**.

- **Park City Municipal** would purchase from **Summit County** and **Basin Recreation** the 292-acres of open space acquired earlier this year from Nadine Gillmor. Sale proceeds would provide additional funding for Toll Canyon and pay off the outstanding Gillmor land note. Contiguous to Round Valley, City acquisition of this parcel will bring the total amount of uninterrupted city-owned open space in Round Valley to 2,100 acres. The City's \$3.9 million cash payment to Basin Recreation is made possible in part by last month's voter-approved increase in the Resort City Sales Tax. Park City also will convey its interest, valued at approximately \$3.5 million, in the jointly owned Kimball Junction Open Space located near the entrance to the Utah Olympic Park to Basin Recreation.
- **Utah Open Lands** has negotiated from the land owner a \$610,000 credit on the purchase price if it can secure \$250,000 in community donations or pledges by year end.

The Summit County Council, as the governing body for Basin Recreation, will hold a public hearing to consider these land transactions at its regularly scheduled meeting on December 19 beginning at 4pm at the County Courthouse in Coalville. The Park City Council will hold a public hearing on the City acquisition of the 292-acre Gillmor parcel and the disposition of its interest in the Kimball Junction Open Space to the County at its regularly scheduled meeting on December 20 beginning at 6pm in the Marsac Building.

Contributions or pledges to Utah Open Land Toll Canyon Fund can be made on-line at www.utahopenlands.org.

For more information:

Basin Open Space Advisory Committee: Max Greenhalgh, Chair, 435-714-1720

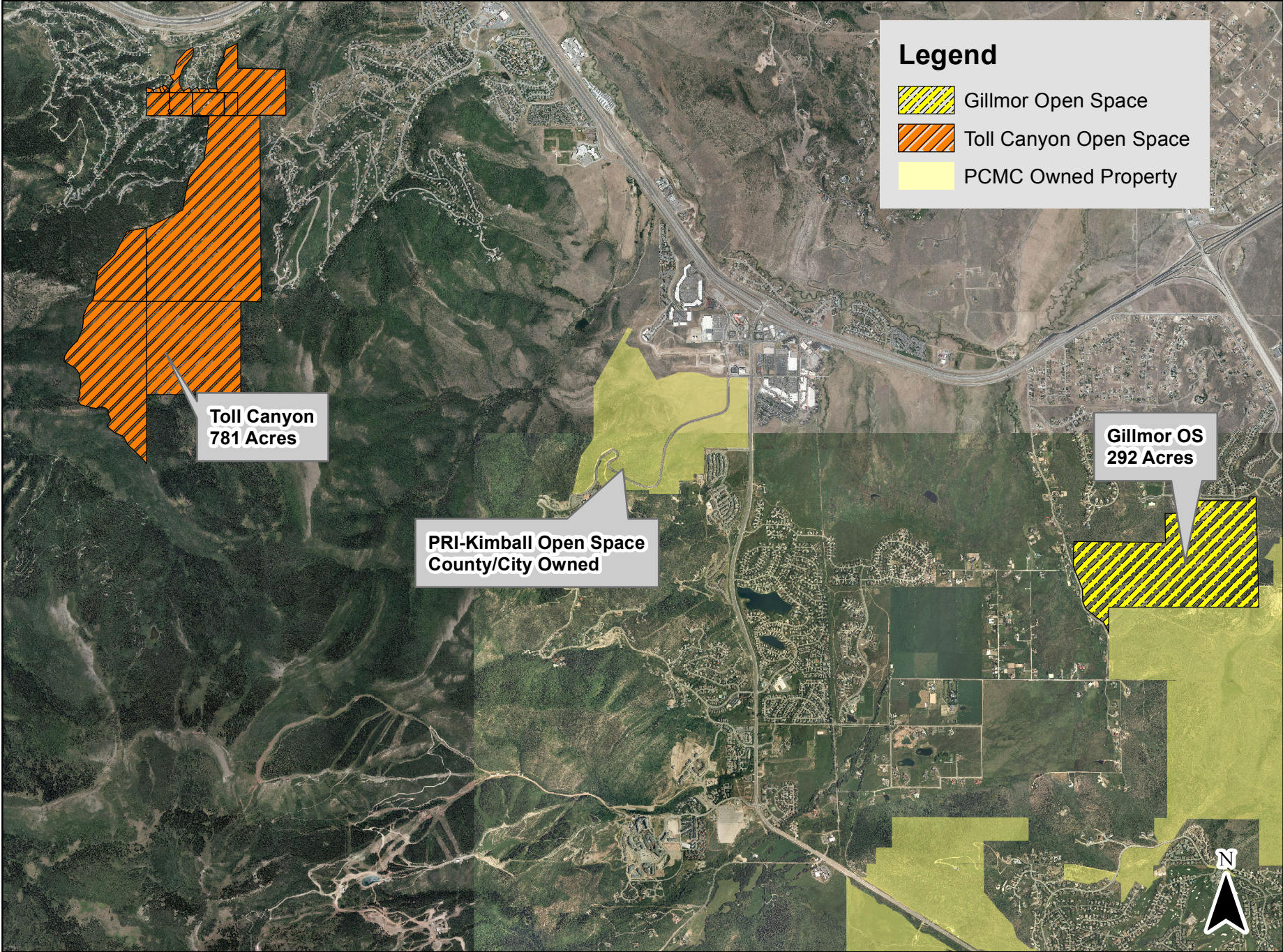
Park City Municipal Corporation: Diane Foster, Interim City Manager, 435-901-2802

Summit County: Chris Robinson, Summit County Council, 801-599-4397

Snyderville Basin Special Recreation District: Rena Jordan, District Director, 435-729-0054

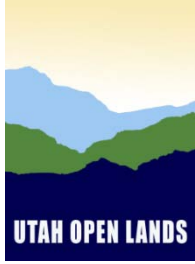
###

Gillmor and Toll Canyon Open Space



0 0.5 1 2 Miles





December 4, 2012

FOR IMMEDIATE RELEASE

Contact: Wendy Fisher, Executive Director Utah Open Lands (801) 694-9033

Utah Open Lands Races to Save Toll Canyon

Snyderville Basin, Summit County - The 781 acres of pristine forest, trails and watershed known as Toll Canyon is up for grabs. And the clock is ticking.

Today Utah Open Lands announced they have finalized a purchase option to bring Toll Canyon into public ownership. Sandwiched between Pinebrook and Summit Park subdivisions in Summit County, Utah Open Lands now has until the end of December to close on the option agreement. Toll Canyon is an oasis of evergreen forests, wildlife, and possible community trails within 20 minutes of Salt Lake City and 10 minutes from Park City.

“Utah Open Lands has about three weeks to raise dollars and pledges to save Toll Canyon,” says Executive Director, Wendy Fisher. The property is currently held by RE Investment Holdings LLC. Utah Open Lands’ option is to acquire the entire 781 acres. Through a qualified appraisal, Utah Open Lands determined a price of \$6,100,000 or roughly \$7800 per acre. If the non-profit land conservation organization is successful in community fundraising, the landowner will contribute \$610,000 in land value, dropping the total purchase to \$5,490,000. If Utah Open Lands fails, development options already allow for residential development.

“Toll Canyon has been a priority for us,” says Fisher. “We’ve been discussing preservation with the landowner. Purchase negotiations began last year. We have a plan. We have a deadline. But we cannot do this alone.” Utah Open Lands has approached Summit County, Park City, and Snyderville Basin Recreation District to solicit open space funds to help pay Toll Canyon’s asking price. Utah Open Lands will also approach private foundations, but will look to Salt Lake and Park City community members to make up the shortfall. “Adding up the dollars,” says Fisher, “we believe we need to come up with at least \$250,000 from the public to make the preservation of Toll Canyon a reality. Foundations want to see community support. So do Summit County leaders and even the landowner.”

The option provides Utah Open Lands with two years to raise \$250,000. However, UOL can’t close on the option by the end of December if community members don’t pledge enough to support the shortfall. All donations and pledges made through www.utahopenlands.org go directly toward the protection of Toll Canyon.

-more-

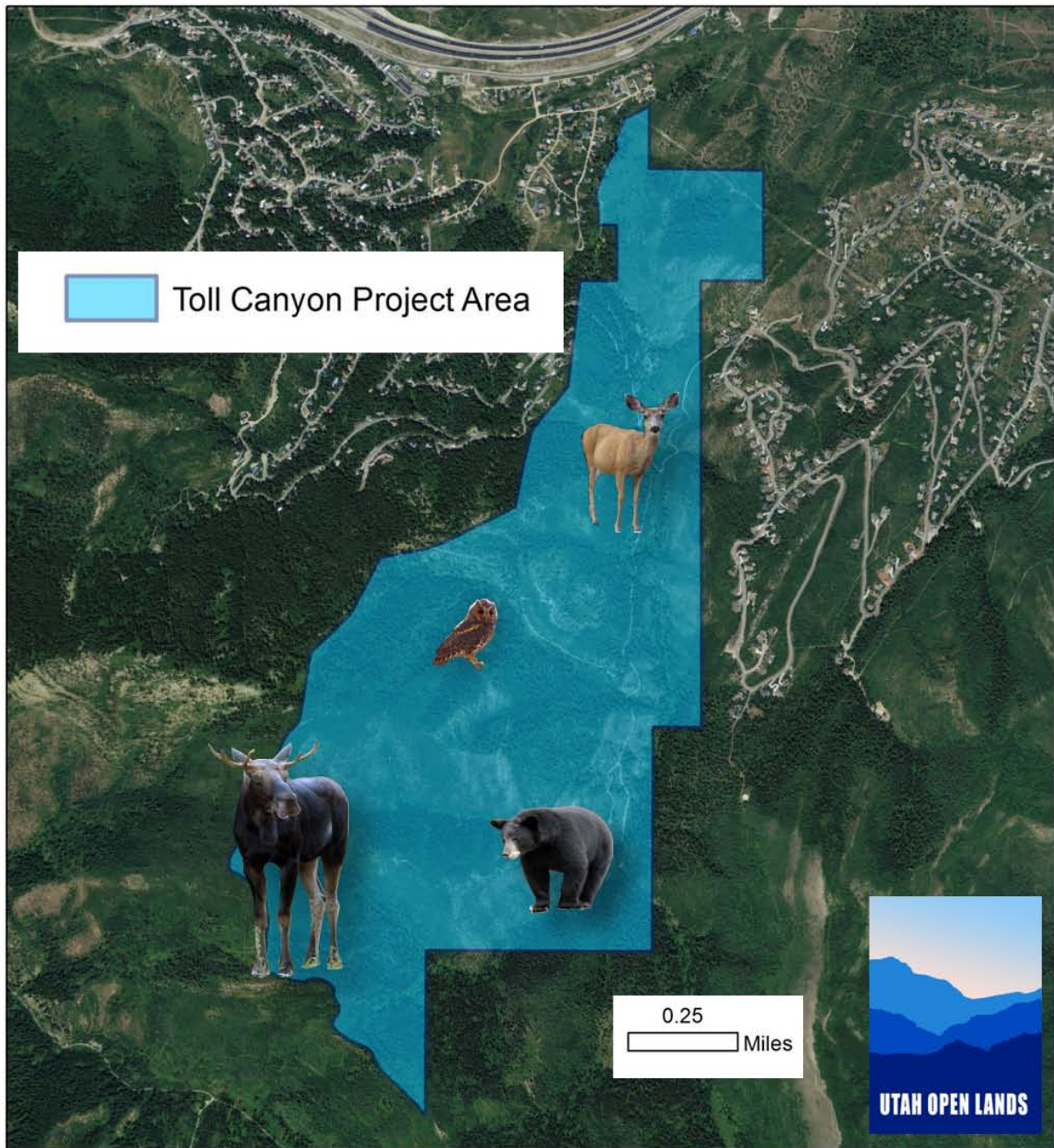
If Utah Open Lands can bring Toll Canyon into public trust, all Utahns will save critical trail connections plus habitat for: moose, elk, deer, black bear, and many birds of prey. Toll Canyon is part of a contiguous corridor of open space. Its protection would mean uninterrupted backcountry trails and wildlife migration corridors from Kimball Junction to Salt Lake County watershed lands.

###

Photos and maps enclosed.
For Interviews contact:
Wendy Fisher 801 463-6156
www.utahopenlands.org



Toll Canyon



Moose



Mule Deer



Black Bear



Flammulated Owl